

WELCOME!
Miller's
NEW
GATEWAY
STORE
OPENS
Wednesday
MAY 6

MILLER'S
FINE LABELS:

MILLINERY, MALL LEVEL
 BROD
 BETMAR

SHOE SALON, MALL LEVEL
 DE LISO
 RICE O'NEILL
 RHYTHM-STEPS
 NATURALIZERS
 PARADISE KITTENS
 ACCENTS

SPORTSWEAR, MALL LEVEL
 WHITE STAG
 CATALINA
 ROSE MARIE REID
 SUSAN THOMAS
 SHIP 'N SHORE
 LADY MANHATTAN
 ALICE STUART

DRESSES, MALL LEVEL
 KIMBERLY
 YOUTH GUILD
 EVE LE COQ
 PAUL BARNES
 BERKSHIRE
 BETTEY BARCLAY
 CASUALMAKER

COATS & SUITS, MALL LEVEL
 COUNTRY MIST
 LAWRENCE
 OF LONDON
 HAND MACHER
 GLENHAVEN

THE PLACE, MALL LEVEL
 PETTI
 BOBBIE BROOKS
 COS COB
 THERMO JAC

THE CLUB, MALL LEVEL
 PICARIELLO & SINGER
 JAYMAR-RUBY
 ARROW
 FARAH
 MUNSINGWEAR
 A-1 KOTZIN
 ENRO

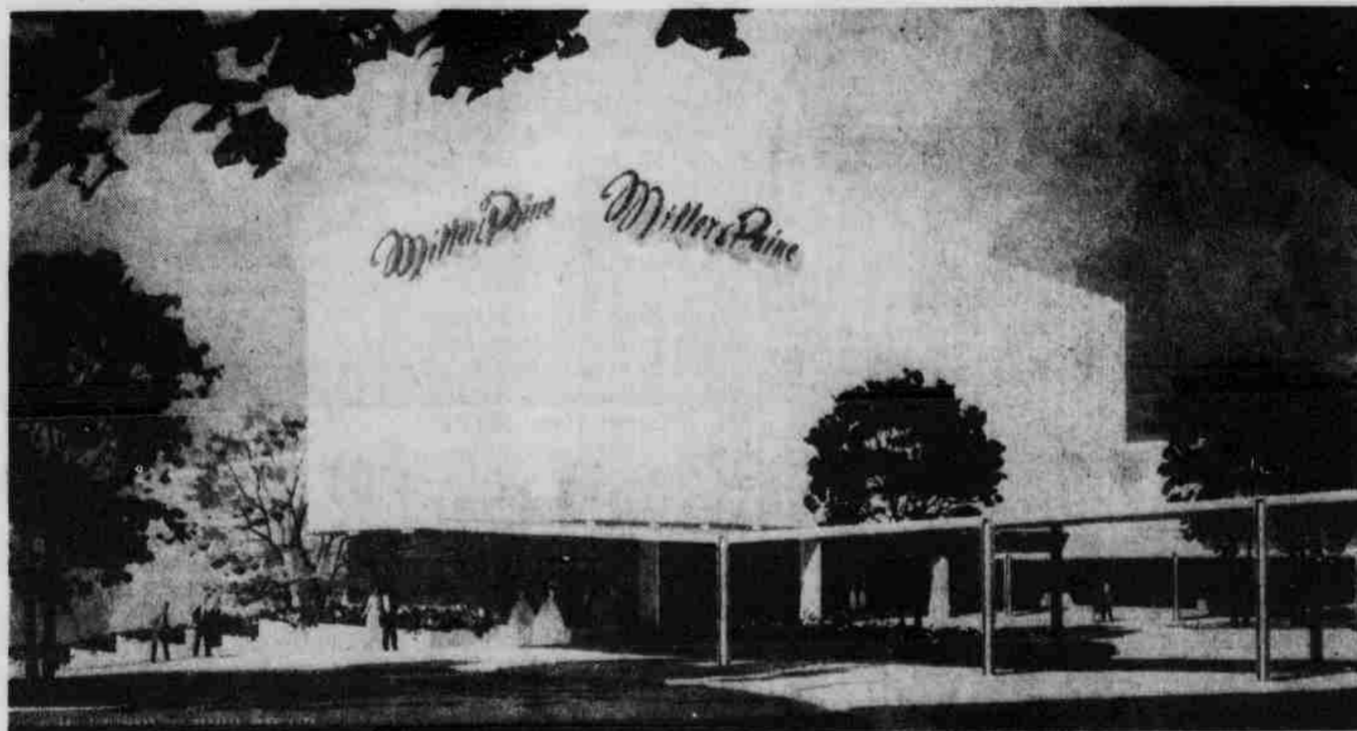


BLUE STAMPS, TOO!

MILLER'S GATEWAY

OPEN 10 A.M. TO 9 P.M. MONDAY, WEDNESDAY, THURSDAY, FRIDAY

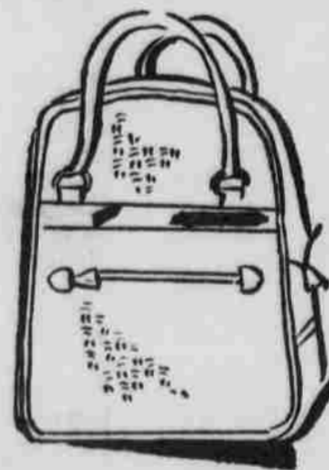
OPEN 10 A.M. TO 6 P.M. TUESDAY & SATURDAY



Blouses, Mall Level



TUNE SHOP • LOWER LEVEL



LUGGAGE, LOWER LEVEL



THE CLUB
 YOUNG MAN SHOP
 MALL LEVEL