

Claridge, Kirby Selected Co-captains For '63 Team

South Dakota State Mentor Confident

By Sports Editor Mick Rood
Dennis Claridge and John Kirby will lead the Nebraska Cornhuskers against South Dakota State this Saturday at the Coliseum in the Scarlet's 1963 opening game.

Claridge, Nebraska's All-America quarterback candidate, and Kirby, veteran left guard, have been selected Husker co-captains for this season. Claridge led the Huskers to their finest record since 1905 last year and won numerous post-season laurels. The 6-3½, 220-pound triple-threat was named All Eight, Big Eight Player and Back of the Year by United Press International, and was drafted number three by the NFL Green Bay Packers and number one by the AFL Oakland Raiders in the pro "red shirt" drafts.

Kirby, a David City, Nebraska product, was a mainstay on the 1962 alternate unit. The fastest guard on the squad, Kirby is a fine defensive player and turned in outstanding pass defense last season. It was his deflection of a Johnny Roland pass last year against Missouri that enabled Noel Martin to intercept and run 88 yards for the first Nebraska touchdown against Missouri since 1957.

Other Husker stalwarts pacing the team this year will be Bob Brown, Willie Ross, Kent McCloughan, and Lloyd Voss. Brown, on virtually everyone's All-America list, will team up with right tackle Lloyd Voss who seems headed for All-Conference honors.

Ross, the sparkplug behind Nebraska's Gotham Bowl victory last year, returns as the leading Husker rusher. McCloughan is a versatile junior halfback who is as well known for his defensive talent as for his speed with the ball.

South Dakota State's camp voiced a quiet confidence before their clash with the heavily favored Cornhuskers. State's Coach Ralph Ginn says he won't let Nebraska's national prominence push his Jackrabbits into "giving up ahead of time."

The Brookings mentor will send the Jackrabbits against the Scarlet in Lincoln for Saturday's Nebraska inaugural. Ginn's team already has a 9 to 6 squeaker over Montana State under their belt, but the coach voiced an awareness of Saturday's assignment.

Montana State proved a stubborn road block for Coach Ginn's club last Saturday night. It took a 45-yard aerial connection from quarterback Doug Peterson to end Darrel Tramp in the fourth period plus a fumble recovery by Terry Gukeisen on the Jack's five-yard line moments later to edge the Montana team.

Sophomore end Ed Maras and halfback Wayne Rasmussen were singled out for Ginn's praise. Both contributed key blocks to State's scoring pass and Rasmussen snared two passes to thwart Montana scoring drives.

Right half Rasmussen will

handle the Jack's punting as well as serving the visitor's rushing and passing attacks. The 172-pound speedster averaged 5.1 yards a try last year and was stopped for only one loss in 81 attempts.

South Dakota State is expected to give State College of Iowa a tussle in their North Central Conference rivalry for the top spot. Main worries for State are lack of over-all depth and the loss of John Stone, the Jackrabbit's chief defensive specialist and the nation's leading field goal kicker last year.

Meanwhile, Husker Coach Bob Devaney is not without

his problems before the 1963 opener. One of the chief worries this fall has been depth behind tested Bob Brown at right guard. This problem was intensified in the last scrimmage when letterman Don McDermott suffered severe ankle and knee injuries. McDermott will be out for at least two weeks while sophomore Duncan Drum moves up to the second unit.

Other than McDermott's loss, Nebraska's first two units are intact. Husker starters against South Dakota State come as no surprise although the spots were fiercely fought for. Probable starters:

Larry Tomlinson, O'Neill senior, left end; Larry Kramer, Austin, Minnesota junior, left tackle; Co-captain John Kirby, David City senior, left guard; Ron Michka, Omaha senior, center; Bob Brown, Cleveland, Ohio senior, right guard; Lloyd Voss, Magnolia, Minnesota senior, right tackle; Dick Callahan, Sioux Falls, South Dakota, senior, right end; Willie Ross, Helena, Arkansas senior, left halfback; Kent McCloughan, Broken Bow junior, right halfback; Gene Young, Cleveland, Ohio senior, fullback; Co-captain Dennis Claridge, Robbinsdale, Minnesota senior, quarter-

Stadium Has New Sound and Sight

Prior to the opening kickoff in the Nebraska-South Dakota State game, September 21, the new Memorial Stadium scoreboard will be dedicated in a brief ceremony.

Ted Connor, president of the Alumni N Club, who donated the new addition, will officially present it to the Cornhuskers. At halftime, following the 1963 debut of the Cornhusker marching band, a brief ceremony will honor Walter Renter and John Bentley, longtime NU athletic department figures who have retired this past summer.

A new scoreboard isn't the only feature at Memorial Stadium that will make 1963 football season more pleasant for fans at Nebraska games.

In the past, it has been almost impossible to understand the public address reports from Ralph Beechner, veteran Lincoln coach and athletic administrator, because of a faulty sound system.

An improved sound system featuring the latest in multi-cellular speakers is being installed on the face of the Field House. Three new speakers with 18 trumpets each will replace the five present speakers, installed in 1942.

The new speakers are the same type used in military air base installations which have a high noise level. They are especially designed for the outside projection of sound over a wide angle area.

A more powerful amplifier is also part of the installation which will cost \$2,750 to be paid for from Athletic Department gate receipts.

Rood Awakening

While Nebraska "tunes up" for the Big Eight race Saturday against South Dakota State, other conference schools face an impressive group of nationally ranked teams.

The Cornhuskers continue to be burdened by a weak opener as the school attempts to gain national recognition. As in the past two years the Scarlet will be partially sized up on their showing against an undermanned ball club.

The weak scheduling of past athletic directors has been a negative factor in Husker fortunes both in 1961 and 1962. Attitudes that can develop in the minds of team members and fans like perhaps hurt these recent teams after they walked all over small schools in first games

In 1961, after pummeling North Dakota, the Huskers were upset by two conference foes, Oklahoma State and Colorado, and tied by Arizona. In 1962, after "defeating" South Dakota University, the squad sailed through lesser opponents (except perhaps Michigan) and then received a rude shock against Missouri on national television.

This is not to belittle the South Dakota State team which should finish high in their own North Central Conference, but Nebraska cannot be judged with any assuredness until they face Minnesota's Gophers in Minneapolis. In 1965, the soft spot disappears when the home forces will begin a series with Texas Christian.

While Nebraska plays South Dakota State, Iowa State will meet California; Colorado goes against Southern Cal.; Missouri faces Northwestern; Oklahoma State visits Arkansas, Oklahoma entertains Clemson and Kansas State plays Brigham Young.

Observers who fear lack of depth will keep Nebraska from a superior season might be losing the idea as reserves have been showing well in fall practice. The big bugaboo is the possible injury of Dennis Claridge although the big Minnesota native would be sorely missed soph Fred Duda appear to be a passer and runner in his own right.

Lack of lettermen at the ends has been another worry. Behind regulars Larry Tomlinson and Dick Callahan however Preston Love Chuck Doepke and Tony Jeter continue to impress coaches with their improvement. White shirted tackles Bob Jones and Monte Kiffin look tougher and faster than a year ago.

Only a recent injury mars the Husker depth picture. Don McDermott playing behind Bob Brown was lost last week and lack of capable replacements from below has some wondering.

This year should hold continued Big Eight prominence on the national scene. Oklahoma, Nebraska, Kansas, and Missouri again have solid elevens. And this grid season has been referred to as the "year of the quarterbacks," — Husker Dennis Claridge being one of them.

Claridge may not achieve the goals some have set for him, not because he can't but for the simple reason that his talents must blend with abilities of ten other capable athletes. Claridge has indicated this himself in pre-season interviews. In order that the Huskers win all members must adapt themselves to one another — not to set records, but to win football games. The team is probably more aware of this than most fans.

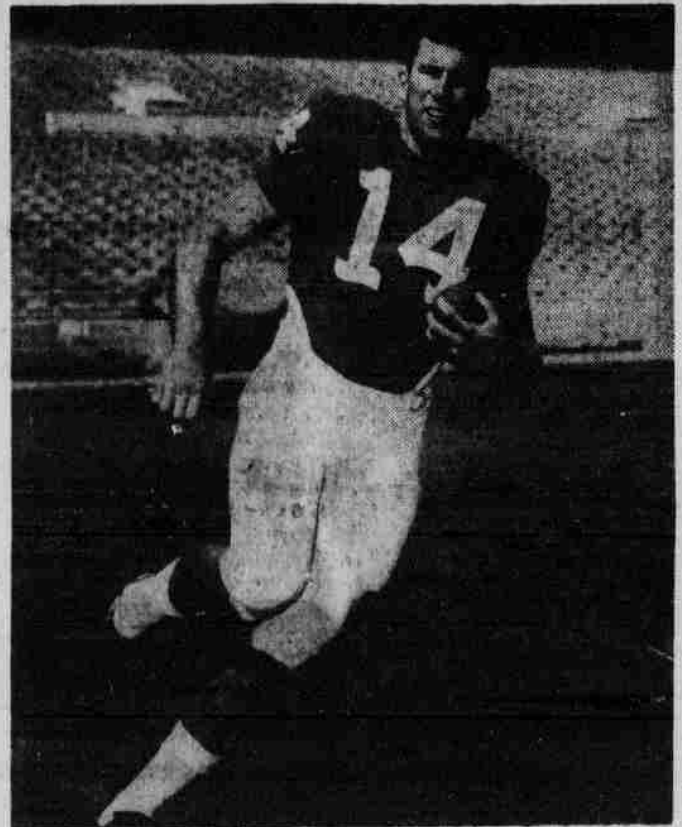
Below is the weekly list of long shots for the expert's entertainment: Washington over Air Force; Alabama to beat Georgia; Arkansas over Oklahoma State; California to edge Iowa State; Oklahoma over Clemson; Southern Cal in a walk over Colorado; Northwestern with a tough win over Missouri; LSU over Texas A&M; TCU to be upset by Kansas; UCLA to tip Pittsburgh; and Texas easily over Tulane.

Wrestling Coach Bob Mancuso reports that all students interested in freshman or varsity wrestling this year should report to the Coliseum, Monday, September 30, at 7 p.m. for a short meeting.

All varsity or freshman athletes should take their physical exams Friday, 6:45 p.m., at Student Health.



ALL-AMERICAN BROWN—Husker Bob Brown exhibits some of the tough line play that could gain him All-American spots.



A VERSATILE MENACE—Dennis Claridge carries the ball that he ran and passed for 1,199 yards last season.

Husker All-Americans

Bob Brown and Dennis Claridge were named by the American Football Coaches Association to the 74th All American Football team.

They were among the 59 gridiron greats named by the coaches in the current issue of TV Guide magazine.

Woody Hayes, head coach of Ohio State University and President of the American Football Coaches Association rates Bob Brown as the big-

gest (6-5, 259) and perhaps the best of the All-American guard candidates. Brown also is listed on All America teams released by Parade and Sport magazines.

Claridge, who stands 6-3 and weighs 210 lbs., last year completed 56 to 128 passes for 829 yards and added 370 on the ground for a total of 1,199 total yards. He also punted 27 times for an average of 36.9 yards.

Claridge and Brown both figure prominently in Nebraska's bid to sidetrack Big 8 champion Oklahoma this season.

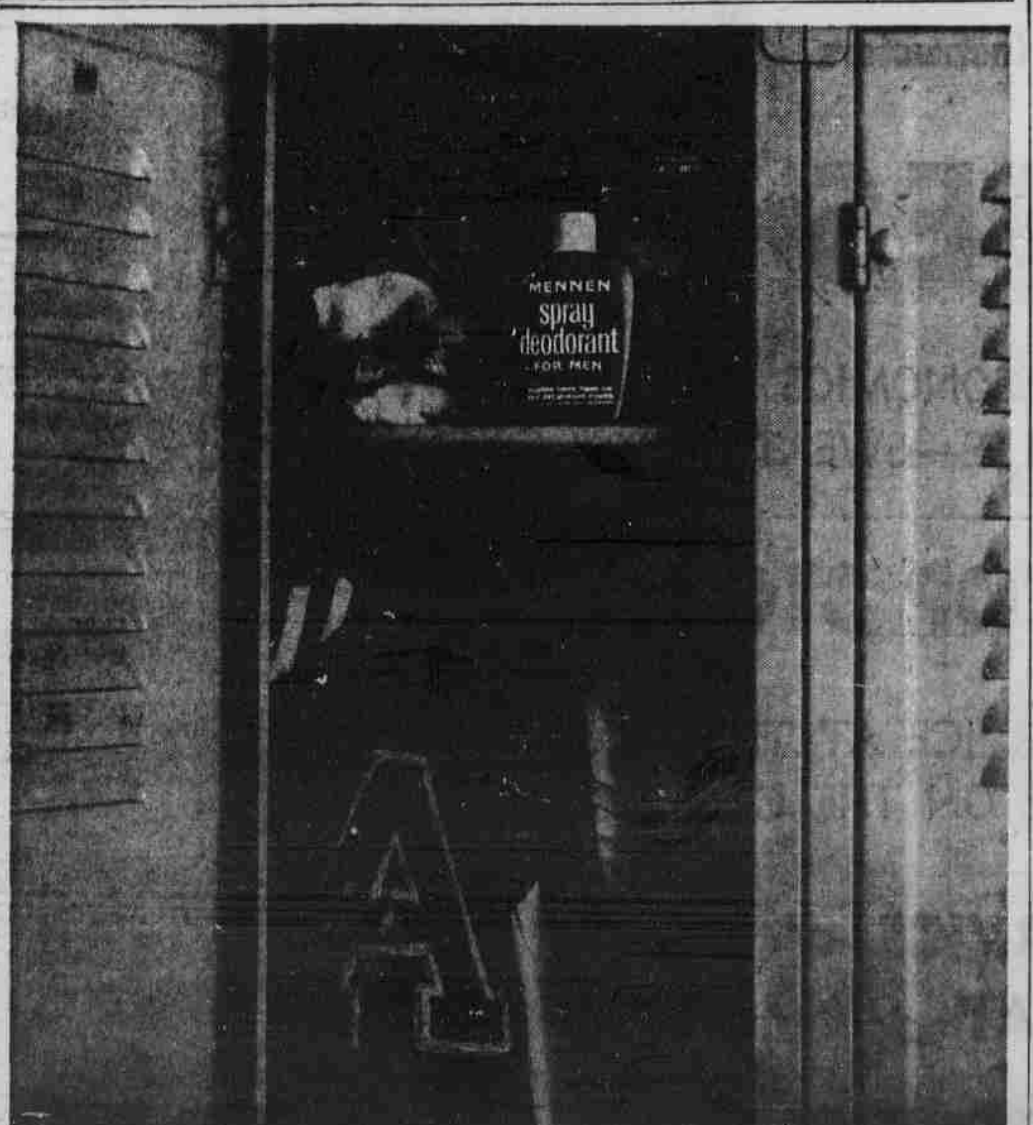
In some of the pre-season polls Nebraska has broken into the top 20. In Look Magazine Nebraska was ranked 19th while Oklahoma was rated 6th. In Parade Magazine Nebraska commanded the 13 spot while Oklahoma took 3rd position. Other Big 8 schools were not mentioned in the polls.

Inter-Campus Bus Ticket

Bus leaves Nebraska Union City Campus hourly 7:05 A.M. through 4:05 P.M. and Burr Hall Ag Campus hourly 7:35 A.M. through 4:35 P.M. Stops and times are subject to change.

Bus runs Monday through Friday except on days no classes or exams are scheduled. See schedule of classes 1963-1964.

Bus tickets may be obtained from the Student Union City and Ag Campus, the Cashier main floor Adm. Bldg. City Campus and Ag Finance office.



MENNEN SPRAY DEODORANT. Best deodorant a man can use. For two good man's reasons.

1. Mennen Spray gets through to the skin where a man perspires.
 2. Mennen Spray is concentrated. Delivers three times the anti-perspirant power of any other leading men's deodorant.
- Mennen Spray Deodorant . . . in the handy squeeze bottle. Try it.

COURSES IN RELIGION

FOR CREDIT ON UNIVERSITY DEGREES

THE COTNER SCHOOL OF RELIGION is accepted by the University of Nebraska for offering accredited courses in Religion to University Students.

No.	Cr.	Title of Course	Hr.	Day	Instructor
001	01	Introduction to Biblical Studies	08	F	Peterson
Ag. 001	01	Introduction to Biblical Studies	16	M	Peterson
010	02	New Testament Life and Literature	08	TTh	Peterson
020	02	Archaeology and the Old Testament	19	T	Pomerantz
030	02	Introduction to the Christian Faith	09	TTh	Stephenson
Ag. 030	02	Introduction to the Christian Faith	15	T	Stephenson
032	02	Jeremiah to Jesus	19	W	Hamburger
039	02	Development of Christian Doctrine	19	Th	Fredrickson
042	02	Religion and the Modern World	10	TTh	Stephenson
075	02	Denominations of Christianity	11	WF	Patterson
091	02	Theology of the Twentieth Century	11	TTh	Stephenson
122	02	Life and Teaching of Jesus	10	TTh	Peterson
122	02	Life and Teaching of Jesus	19	M	Peterson
Ag. 128	02	Luke - Acts	15	Th	Stephenson
145	02	Religion and the Arts	14	WF	Stephenson
149	02	Science, Philosophy and Theology	19	T	Stephenson
163	02	Principles of Christian Education	10	WF	Hays
185	02	World Religions	09	WF	Pickering
210	02	Cultural History of Palestine	14	T	Peterson
228	02	Problems in Biblical Preq. Interpretation	08	WF	Stephenson

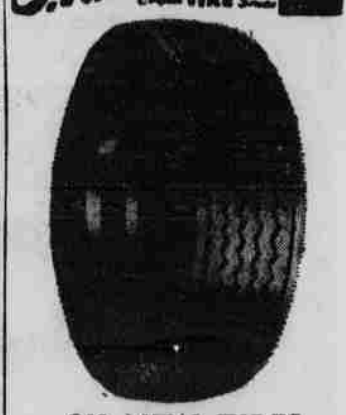
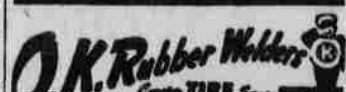
THE FACULTY FOR FIRST SEMESTER 1963-64

Dr. Linwood Fredrickson is a guest professor sponsored by the Lutheran Student Foundation. He is professor of Christian Thought in Midland Lutheran College. Rabbi Wolfgang Hamburger of South Temple is Resident Lecturer on Judaism, sponsored by the Jewish Chastataga Society. Rev. Ralph W. Hays, guest lecturer, is a university pastor representing the United Campus Christian Fellowship. Rev. Dennis W. Patterson, guest lecturer, is a university pastor representing the United Campus Christian Fellowship. Dr. Raleigh J. Peterson, Jr. is Dean of Cotner College and professor of Biblical Studies. Dr. Alan Z. Pickering, guest professor, is university pastor and director of the United Campus Christian Fellowship. Rabbi Moshe A. Pomerantz of Tiferet Israel Synagogue is guest lecturer representing the Hill Foundation. Professor Keith D. Stephenson is assistant professor of Biblical Theology in Cotner College.

Register at 1237 "R" Street, Lincoln 8, Nebraska
Call 477-6909 for information

Cotner School of Religion

NEBRASKAN WANT ADS



OK NEW TIRES
Lifetime Guarantee
AS LOW \$10.95
AS
7.50-14 Nylon Tubeless
Plus Tax and Recappable Tire

Rubber Welders
BRAKE RELINE
\$12.95 up
Guaranteed Up to 2 Years

O.K. Rubber Welders
Front End Alignment
\$6.95
Guaranteed Up to 1 Year

O.K. Rubber Welders
Chain Bar
Mud & Snow
OK RETREADS



\$8.95
6.70x15, 7.50x14 Tubeless Black
Other Sizes Proportionately Low.
Plus Tax and Recappable Tire
Add \$1 for WhiteWall
WE ALSO CAP ALL COMPACT
SIZE TIRES—
4-HOUR CUSTOM CAPPING
NO MONEY DOWN
PAY AS YOU RIDE

O.K. Rubber Welders
T. O. HASS
500 West "O" — 435-3211