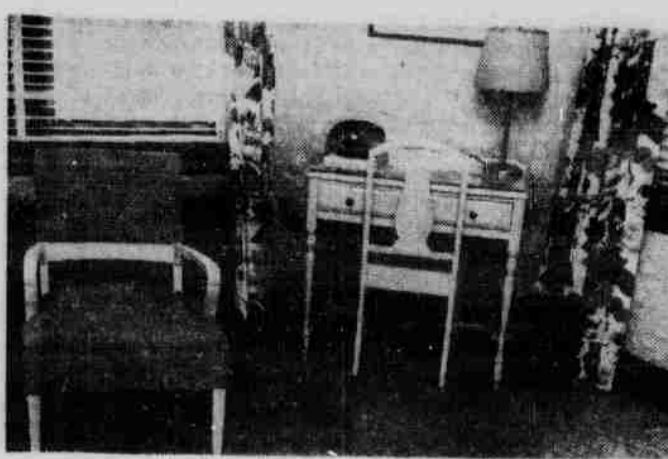


Capital Hotel Students Bothered By Limited Clothes, People Space



A TEENSE TINY—Size, air circulation, people circulation, and closet space are just a few problems facing University men living in the Capital Hotel this year. Each room has a private bath, but even that convenience has turned into a complaint from some residents, who claim they could use the space it takes up to a better advantage. The move from Selleck Quadrangle is a result of the influx of girls in the 8,000 building, all part of the housing problem at the University.

Inexperienced Elevator Operators Plus Excess Bathtubs Make Hotel Life Unique

By JIM MOORE
Junior Staff Writer

"Thank goodness my roommate hasn't moved in yet," commented a resident of the Capital Hotel. "I don't know if he'd even find room to sleep!"

Since the University decided to house 140 students on the top four floors of the hotel, it has encountered many problems and complaints.

Most of the rooms are only seven or eight feet wide and have little or no closet space. Commented Dick Strickland, "The thing that really bugs me is the two and a half feet of closet space I have. It just isn't enough."

The circulation of air is another problem. Rooms have only one window and a narrow aisle leading to the main hall.

"Even if there was a hurricane outside, I doubt we'd have more than a small

breeze in here," Dick continued.

Sleep In Tub?
One convenience of the Capital Hotel is the private bath in each room. But even this came under fire from one resident.

"I'd much rather have the room the bathroom takes up. We only use it in the morning, and trying to squeeze around it during the rest of the day just doesn't make sense," commented Strickland.

One of the oddities of hotel living is the elevator situation. Students on work scholarships have become elevator boys with results union-paid operators dream about only in nightmares.

"Actually, I think it's safer to climb stairs," commented one resident as he stumbled off the elevator on the seventh floor. "I wanted the tenth floor, but I don't think he'd make it."

Retorted the elevator boy, "But I only missed this floor by a couple of feet!"

Another resident, Jim Johnson, quipped, "The first time I rode on that thing, we ended up in the basement instead of the lobby before he could get it stopped."

Selleck Meats
The residents of the hotel take meals at Selleck Quad. "Although it's too far to walk, it's too close to drive," commented Dick Thomas. "When classes start it won't be as bad, though," he continued.

The students at the hotel were assigned their rooms on a voluntary basis. "Although we weren't forced to live here, there really wasn't any place else to go. Apartments were too expensive and Selleck was full. This was all that was left," Thomas commented.

Students who live on the west side of the hotel look down on the new bus terminal immediately below them. Ron Jones commented, "The rooms themselves aren't really so bad. But those port calls 'All aboard for Hastings, Denver, and points west' at 2 a.m. are just a little tiring!"

Five Sig Chi's Attend Program

Five Sigma Chi's from the Nebraska chapter were among 600 undergraduate delegates who attended the annual Leadership Training Workshop of the fraternity held on the campus of Culver Military Academy August 26-29.

Those Sigma Chi's in attendance were Steve Brammer, Mike Miner, Roger Anderson, Joel Lundak and Bob Seidell.

Researcher Sahs Returns

Warren W. Sahs, former manager of the University Foundation Seed Division, has just returned from conducting a hybrid seed production project in the northern two-thirds of India. The former University faculty member has been working on a special assignment from the Rockefeller Foundation in an area ranging from semi-desert to a high rainfall.

He is returning to the University staff to coordinate research programs at the new Mead Field Laboratory.

NU Graduate Meier Receives Promotion

A University graduate has received a promotion to vice president of the Omaha consulting engineering and architectural firm. E. B. Meier, who has headed the Kirkham, Michael and Associates sanitary engineering department the past five years, received the appointment over the weekend.

COURSES IN RELIGION

FOR CREDIT ON UNIVERSITY DEGREES

Cotner School of Religion

No.	Course	Credit	Time	Days	Instructor
1	INTRODUCTION TO BIBLICAL STUDIES	1	0800	F.	Peterson
	Tools and techniques (Prerequisite)				
1	INTRODUCTION TO BIBLICAL STUDIES	1	1300	T.	Peterson
Ag 1	INTRODUCTION TO BIBLICAL STUDIES	1	1600	M.	Peterson
10	NEW TESTAMENT LIFE AND LITERATURE	2	0800	T.Th.	Peterson
Ag 10	NEW TESTAMENT LIFE AND LITERATURE	2	1500-1700	T.	Peterson
12	OLD TESTAMENT LIFE AND LITERATURE	3	0900	M.W.F.	Pickering
	Origin, content of Hebrew scriptures				
30	INTRODUCTION TO CHRISTIAN FAITH	2	0900	T.Th.	Stephenson
	Biblical concepts; their current significance				
90	CURRENT TRENDS IN THEOLOGY	2	1100	W.F.	Stephenson
	Conservative, Liberal, NeoOrthodox Perspectives				
92	PROBLEMS IN HUMAN EXISTENCE	2	1500	T.Th.	Stephenson
	Purpose and Meaning of modern life				
99A	GREAT THEOLOGICALS: AQUINAS	2	1900-2100	W.	Myers
	Life and thought of Aquinas				
114	HEBREW PROPHETS	2	1900-2100	W.	Hamburger
	The timeless message of Israel's preachers				
122	LIFE AND TEACHING OF JESUS	3	1000	T.Th.	Peterson
	Principal events and major teachings				
Ag 126	LUKE-ACTS	2	1500-1700	W.	Stephenson
	Content & Problems of 1st Century History				
145	RELIGION AND THE ARTS	2	1900-2100	T.	Stephenson
	Interchange between church and the arts				
149	RELIGION AND THE NATURAL SCIENCES	2	1100	T.Th.	Stephenson
	Historic & modern issues in science & theology				
160	PSYCHOLOGY OF RELIGION	2	1000	W.F.	Hays
	Psychological dynamics of religious concepts				
165	YOUTH WORK IN THE CHURCH	2	1400	W.F.	Schomer
	Principles and methods in youth program				
167	THE CHRISTIAN FAMILY	2	1400	T.Th.	Patterson
	Family life—from Christian standpoint				
190B	CONTEMPORARY THEOLOGICALS: BONHOEFFER	2	0800	W.F.	Stephenson
	Thought of the 20th Century martyr				
190N	CONTEMPORARY THEOLOGICALS: NIEBUHR	2	1500-1700	W.	Gould
	Analysis of Thought of Reinhold Niebuhr				
202	ADVANCED HEBREW READING	2	1900-2100	Th.	Pomerantz
	Hebrew language studies				

THE FACULTY FOR FIRST SEMESTER 1962-63

William B. Gould, A.B.; Rabb Wolfgang Hamburger; Ralph W. Hays, B.A.; J.R. Myers, A.B.; Dennis W. Patterson; Raleigh J. Peterson, Jr., A.B.; Alan J. Pickering, B.S.; Maurice A. Pomerantz, B.A.; A. Lee Schomer, B.A.; Keith D. Stephenson, A.B.

Register at 1237 "R" Street, Lincoln 8, Nebraska
Call 477-6909 for information.

Cotner School of Religion

Union Closes

All Union service facilities will be closed to students Monday evening beginning at 7 p.m. for the annual faculty reception.

LITTLE MAN ON CAMPUS



"FRANKLY ELLEN, I DIDN'T KNOW YOU SORORITY GIRLS WERE SO SENSITIVE ABOUT BEING SEEN WITH AN 'INDEPENDENT'!"

Wolf Receives Fellowship For Parathyroid Research

Gerald Lee Wolf, sophomore at the University of Nebraska College of Medicine, has been awarded the first Dr. Charles Frank Morsman Fellowship for research in endocrinology.

The one-year fellowship, valued at \$3,352.00, will be used for the study of para-

thyroid glands. The Fellowship will be administered by Dr. A. Ross McIntyre, chairman of the department of physiology and pharmacology, and Dr. Merrill Hendrickson, research associate in physiology and pharmacology.

Dr. Morsman of Hot Springs, S.D., a 1902 graduate of the University College of Medicine, set up the Foundation in 1946 "to enhance and disseminate knowledge in endocrinology, to train men or women to become endocrinologists . . ."

Wolf completed his pre-medical work at Hastings College. In 1960, he was awarded the College of Medicine Alumni Association scholarship, and in 1961-62 he received the Regents upper-class scholarship. He is in the upper 10% of his medical class.

Airlines Offers Student Rates

Two special travel plans are being offered to University students by Frontier Airlines.

One program permits University students to purchase a Frontier Airlines Youth Identification card for \$5 per year which entitles the owner to travel via Frontier at approximately one-half the normal first class round trip fare.

Under the other program, if eight or more students are traveling as a group, one of the eight receives his round-trip transportation free. This plan can be used in connection with the youth fare program.

Youth Identification cards may be obtained at Lincoln Tour and Travel Agency, Cornhusker Travel, or Frontier Airlines.

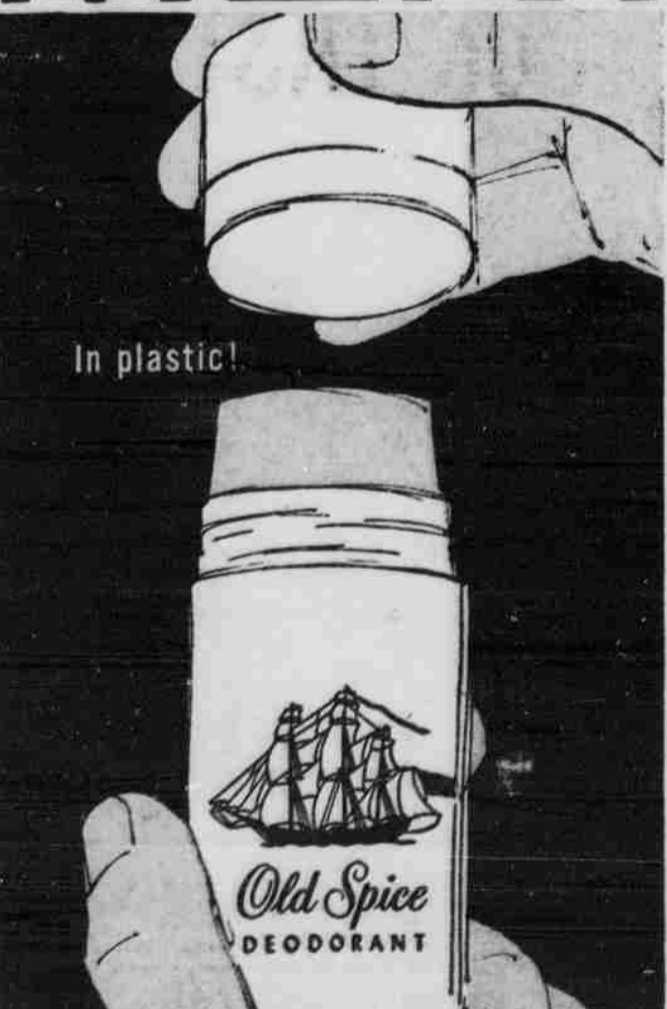
DECI-LON

THE NEW ENGINEERING SCIENCE SLIDE RULE

See DECI-LON and other fine K&E slide rules at your college store.

KEUFFEL & ESSER CO. Hoboken, N.J.

MEN!



Here's deodorant protection YOU CAN TRUST

Old Spice Stick Deodorant...fastest, neatest way to all-day, every day protection! It's the active deodorant for active men...absolutely dependable. Glides on smoothly, speedily...dries in record time. Old Spice Stick Deodorant—most convenient, most economical deodorant money can buy. 1.00 plus tax.

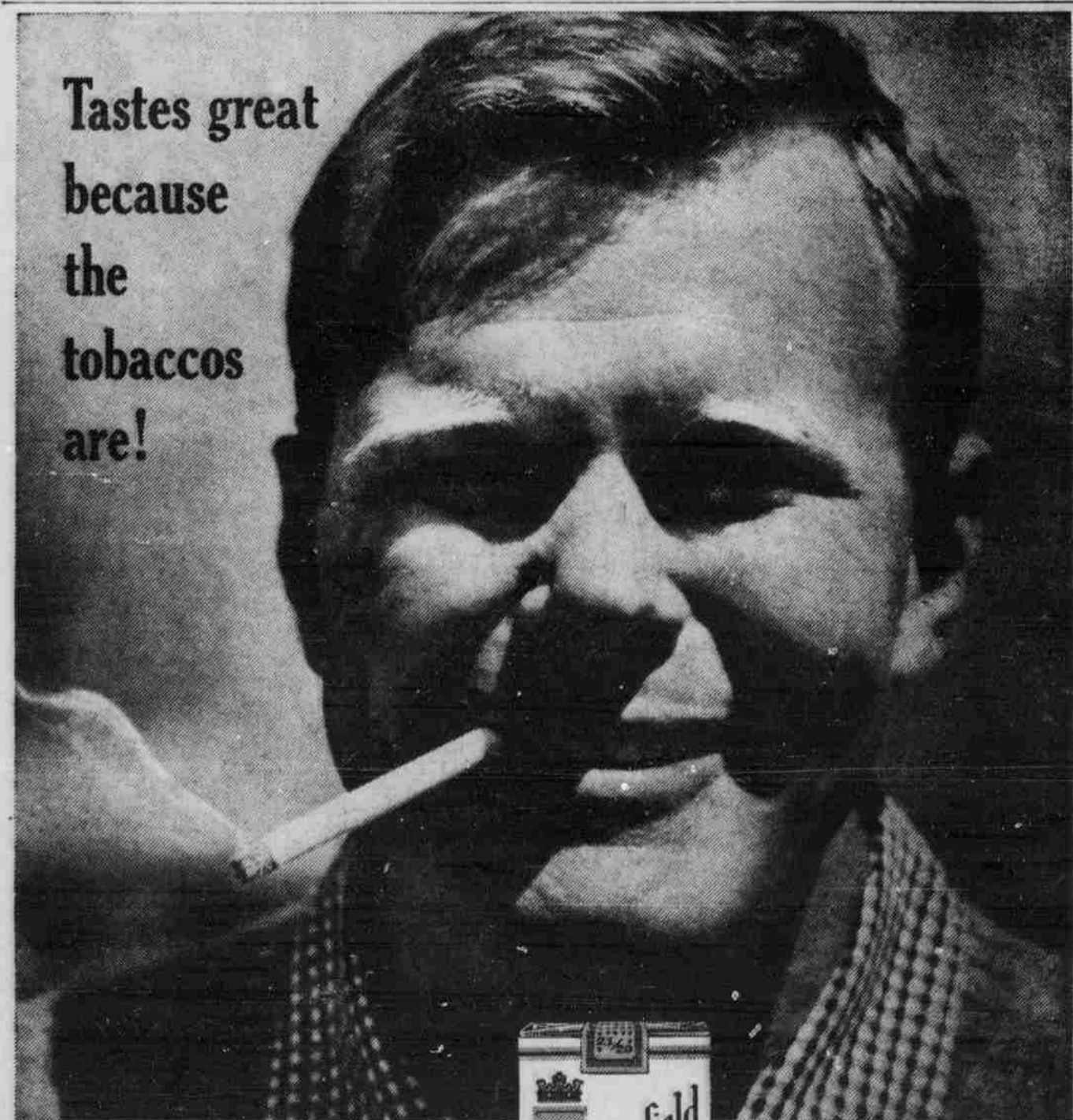
Old Spice STICK DEODORANT SHULTON

THERE'S A 20-YEAR-OLD GIRL STANDING NEXT TO ME

I GET SO SELF-CONSCIOUS AT TIMES LIKE THESE!

I WONDER WHAT SHE'S THINKING ABOUT ME.

THEY MAKE THESE MANIQUINS So #0!!0! LIFELIKE NOWADAYS.



21 GREAT TOBACCOS MAKE 20 WONDERFUL SMOKES!
Vintage tobaccos grown, aged, and blended mild...made to taste even milder through the longer length of Chesterfield King.
CHESTERFIELD KING
TOBACCOS TOO MILD TO FILTER, PLEASURE TOO GOOD TO MISS

FILM SOCIETY TICKETS ON SALE WEDNESDAY

Ticket Booth Sept. 19 \$5.00