

Twenty IM Teams Victorious

By Mel Hester

With the first week of intramural football over, the strength of almost each team has met its first test. At this time 20 teams either reign over their league or are tied for top honors.

In fraternity league one, Phi Kappa Psi and Sigma Chi are tied for first place, league two finds Sigma Alpha Epsilon tied with Theta Xi, Alpha Tau Omega and Phi Gamma Delta lead league three, league five is ruled by Sigma Alpha Mu and Cornhusker Co-op, and league six has a single title holder in Pioneer Co-op.

Leading the Burr-Selleck Resident Hall Houses is Gooding and Smith in league seven, Benton in league eight, and Canfield in league nine.

Though the Independent Leagues haven't started yet, Fraternity "B" Teams have five leading teams: Phi Kappa Psi, Beta Theta Pi, Alpha Tau Omega, and Delta Tau Delta.

Most of this week's scores were somewhat lopsided for one team or the other. The Sigma Alpha Mu-Sigma Phi Epsilon game had but a one point margin, however.

With the score tied at the end of the regular time, each team received four plays in which the victor would be derived from yardage gained.

With the over time rulings in affect, Sigma Alpha Mu on their second played scored a touchdown. Sigma Phi Epsilon then took the ball only to have a pass intercepted which ended the game.

Thursday's Scores

Ag Men 13 Farm House 6
Alpha Gam. Rho 21 Alpha Gam. Sigma 7
Gooding 19 Kieselbach 7
Delta Sigma Phi 32 Theta Chi 12
Pioneer 46 MacLean 9
Smith 20 season 9
Benton 11

Friday's Scores

Beta Theta Pi 41 Phi Delta Theta 6
Alpha Tau Omega-B 21 Theta Xi-B 6
Del. Tau Delta-B 22 Phi Epsilon-B 19
Gus 19 Bessey 6
Canfield 36
Phi Kappa Psi-B 36 Delta Upsilon-B 13
Sigma Chi-B 7 Sigma Alpha Epsilon-B 9

Tuesday's Games

Ag College-Ag Men vs Alpha Gamma Rho
Alpha Gamma Sigma vs Farm House
City Field-Kappa Sigma-A vs Delta Upsilon-A
Sigma Chi-A vs Phi Kappa Psi-A
Sigma Alpha Epsilon-A vs Phi Delta Theta-A
Alpha Tau Omega-A vs Sigma Nu-A

League Standings

FRATERNITY "A" TEAMS

Phi Kappa Psi 1-0
Sigma Chi 1-0
Delta Upsilon 1-0
Delta Chi 0-1
Sigma Alpha Epsilon 1-0
Theta Xi 1-0
Beta Theta Pi 0-1
Phi Delta Theta 0-1
Alpha Tau Omega 1-0
Phi Gamma Delta 1-0
Delta Tau Delta 1-0
Sigma Nu 0-1

League 2-A

Alpha Tau Omega 1-0
Phi Gamma Delta 1-0
Delta Tau Delta 1-0
Sigma Nu 0-1

League 3-A

Alpha Tau Omega 1-0
Phi Gamma Delta 1-0
Delta Tau Delta 1-0
Sigma Nu 0-1

League 4-A

Ag Men 1-0
Alpha Gamma Rho 1-0
Farm House 1-0
Alpha Gamma Sigma 0-1

League 5-A

Sigma Alpha Mu 1-0
Cornhusker Co-op 1-0
Beta Sigma Psi 0-1
Sigma Phi Epsilon 0-1

League 6-A

Pioneer Co-op 1-0
Delta Sigma Phi 1-0
Acacia 1-0
Theta Chi 0-1
Delta Sigma Psi 1-0

BURR-SELLECK RESIDENT HALL HOUSES

League 7-A

Smith 1-0
Gooding 1-0
MacLean 1-0
Kieselbach 0-1

League 8-A

Gus 1-0
Benton 1-0
Season 1-0
Selleck 0-1

League 9-A

Canfield 1-0
Bessey 0-1
Dougher 1-0
Gus II 0-1

FRATERNITY "B" TEAMS

League 10-B

Phi Kappa Psi 1-0
Delta Upsilon 1-0
Sigma Chi 1-0
Sigma Alpha Epsilon 1-0

League 11-B

Beta Theta Pi 1-0
Alpha Tau Omega 1-0
Phi Delta Theta 1-0
Theta Xi 1-0

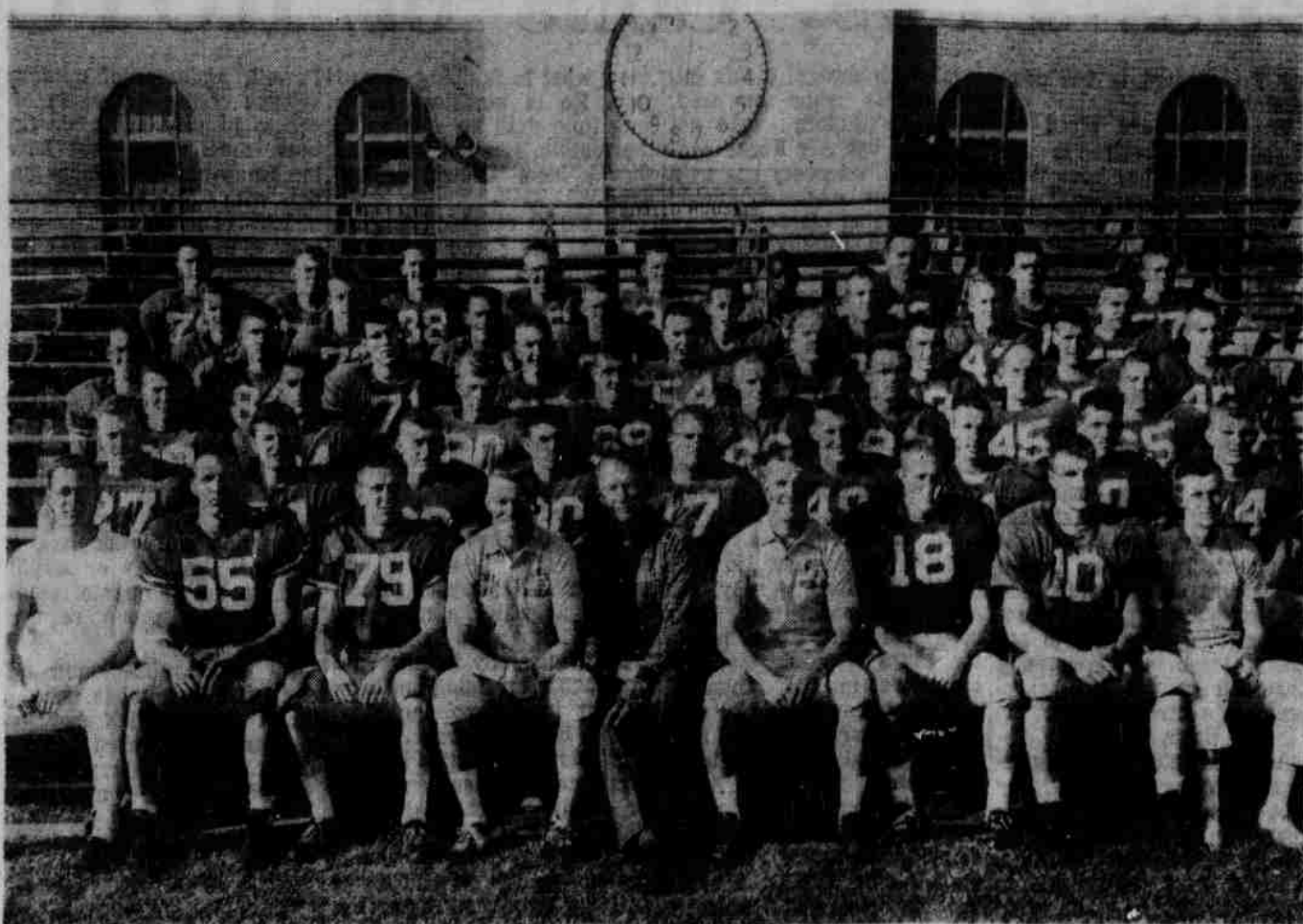
League 12-B

Delta Tau Delta 1-0
Sigma Phi Epsilon 1-0
Sigma Nu 1-0
Phi Gamma Delta 1-0

INDEPENDENT LEAGUE

Dental College 1-0
Canaries 1-0
Newman Club 1-0
Play Boys 1-0
Vocational AG 1-0

NU Frosh Football Team



UNIVERSITY OF NEBRASKA FRESHMAN FOOTBALL SQUAD—(first row, from left) Assistant Trainer Nick Drago, Anthony Guillory, Beaumont, Tex.; Gary Lucas, Greeley, Colo.; Coach Jack Braley, Assistant Coach Ed Weir, Assistant Coach Harry Tolly, Tom Wolff, Omaha; John Strohmeyer, Lexington; Assistant Trainer Jim Larsen. (second row, from left) David Haas, Moline, Ill.; John Vulevich, Clairton, Pa.; Don Svoboda, David City; James Murphy, Valentine; Jerry Payne, Exira, Iowa; Dennis Kirby, David City; Don McDermott, Harlan, Iowa; Doug Tucker, Davenport, Iowa; Jeff Shafer, Greeley, Colo.; (third row, from left) Rich Jochem, North Platte; John Dervin, Chicago, Ill.; Mark Wallace, North Platte; Gene Bowen, Hebron; Dave Banks, Wasua; Joe McNulty, McCook; John Lockwood,

Beatrice; Bruce Craig, Bethesda, Md.; (fourth row, from left) Bill Rogers, Chicago, Ill.; Robert Jochem, St. Joseph, Mich.; Carl Suplick, Crystal, Minn.; Ken Simodynes, Wahoo; Gene Cunningham, Fullerton; Gary Gray, Valentine; Mike Keenan, Lincoln; Gary Graham, Ravenna; Dwane Novak, Omaha; (fifth row, from left) Gary Krohn, Albion; Bruce Smith, Falls City; Claude Faulkner, North Platte; John Koinzan, Bartlett; Mark LaNoue, Denver, Colo.; LeRoy Fugitt, Wichita, Kan.; Ray Maher, Red Oak, Iowa; Kent McCloughan, Broken Bow; (sixth row, from left) Raymond Opp, Glendive, Mont.; Jim Weir, Hartington; Don Goos, Mitchell; D. Hardy, Wichita, Kan.; Richard Ashman, Burwell; Willie Paschall, San Antonio, Tex.; Jerry Shaw, Lincoln; John Sebastian, Oak Park, Ill.; Richard Vomacka, Omaha.

Frosh Coach Braley Tabs Team as Speedy

By Bob Besom

"Hard workers... aggressive... possess good speed" is how coach Jack Braley summed up the progress of his Husker freshmen football team Monday, after the first two weeks of practice.

He added that the '61 squad does not have the great weight advantage of last year's club but may make up for it with its superior overall speed.

He said that three of his backs have already shown an outstanding ability to run and hit hard.

Competition is greatest for the number one guard and fullback spots. Braley commented that individual ability seems equal in those positions.

The roster still numbers 54 (four have checked out; four scratched) and is divided into four full strings.

The young Huskers will get in scrimaging time every Saturday morning in preparation for their first clash October 27 with Iowa State, in Lincoln.

This is the way the first three frosh units stacked up Monday:

Left ends—Gary Lucas, Don Goos, Bill Rogers.
Left tackles—John Strohmeyer, Gene Cunningham, Gene Bowen.
Left guards—Don McDermott, John Dervin, Gary Gray.
Centers—Ray Maher, Leroy Fugitt, Carl Suplick, Gary Banks.
Right guards—Dwane Novak, Jeff Rogers, J. D. Hardy.
Right tackles—Anthony Guillory, David Haas, Jerry Shaw.
Right ends—John Lockwood, Mark Wallace, Bob Jochem.
Quarterbacks—Doug Tucker, Terry Bushoven, Jeff Shafer, Gary Graham.
Left halfbacks—Kent McCloughan, Willie Paschall, Roger Stawasz.
Right halfbacks—Dennis Kirby, John Sebastian, Gary Krohn.
Fullbacks—John Vulevich, Jerry Payne, Tom Wolf.

Tougher Defense Needed Against K-State—Jennings

By Dave Wohlfarth

Husker football Coach Bill Jennings indicated at the Monday press conference that Nebraska must toughen its defense this week. Jennings' gridders meet Kansas State in their first conference test Saturday at Manhattan.

When questioned about Nebraska's defensive charge in the 14-14 tie against Arizona, Jennings replied that the NU line charged sometimes but that "they (Arizona) moved the ball well against us."

Jennings said that it was difficult to switch defenses during a game and "we don't have our entire defensive plans decided for this week."

"We will have to play a better defense this week," he continued. "We also hope to

perk our offense up a little this week."

Jennings reported that the Huskers are still in good shape injury-wise and everyone should be ready by Saturday.

Halfback Dennis Stuewe, who sprained an ankle in the Arizona game, did not practice Monday but should be ready, according to Jennings.

"Thunder" Thornton has also been released from Student Health and will practice this week, he added.

The Huskers had a full dress practice Monday because many of the players had exams later in the week.

Big Eight Roundup Big Eight Grid Picture Labeled with Uncertainty

Big Eight Standings

CONFERENCE

	W	L	T	Pct.	Pts.	Opp.
Colorado	1	0	0	1.000	14	0
Iowa State	1	0	0	1.000	14	7
NEBRASKA	0	0	0	.000	0	0
Oklahoma	0	0	0	.000	0	0
Kansas	0	0	0	.000	0	0
Missouri	0	0	0	.000	0	0
Kansas State	0	0	0	.000	0	0
Oklahoma State	0	0	0	.000	0	0

ALL GAMES

	W	L	T	Pct.	Pts.	Opp.
Missouri	2	0	0	1.000	34	8
Iowa State	2	0	0	1.000	35	7
Kansas State	2	0	0	1.000	38	20
Colorado	1	0	0	1.000	34	6
NEBRASKA	1	0	1	.750	47	14
Kansas	0	1	1	.500	22	22
Oklahoma	0	2	0	.000	6	19
Oklahoma State	0	2	0	.000	7	28

By Mike MacLean

"Upset" and "unsettled" seem to be the best two words to describe the Big 8 Conference after two weeks of competition.

Kansas, which was tabbed for loop and national honors before the season, is winless after two tries. Kansas State, usually everyone's friend in the conference, comes into its first league competition with two impressive wins over Indiana and Air Force Academy.

Nebraska, which was to romp until its game with Syracuse on October 14, had to hustle to catch up with speedy Arizona for an ominous tie.

In last week's competition, Kansas State took care of Air Force, 14-12; Colorado shut out Oklahoma State 24-0; Kansas tied Wyoming, 6-6; Missouri got by Minnesota 6-0;

Nebraska evened up with Arizona, 14-14 and Oklahoma was beaten by Notre Dame, 19-18.

Cowboys Lead Offense

The statistics seem to confirm the "unsettled" adjective. Oklahoma State, having lost twice, leads in team offense with 513 yards. Twice victorious Missouri, defending champion, is fourth on the list with 425. Kansas State, also with two wins, is even further down the list.

Dave Hoppmann, of Iowa State, is the leading ball carrier with 212 yards gained in 45 attempts. Nebraska's Bill Thornton is 16th with 57 yards gained in 19 tries.

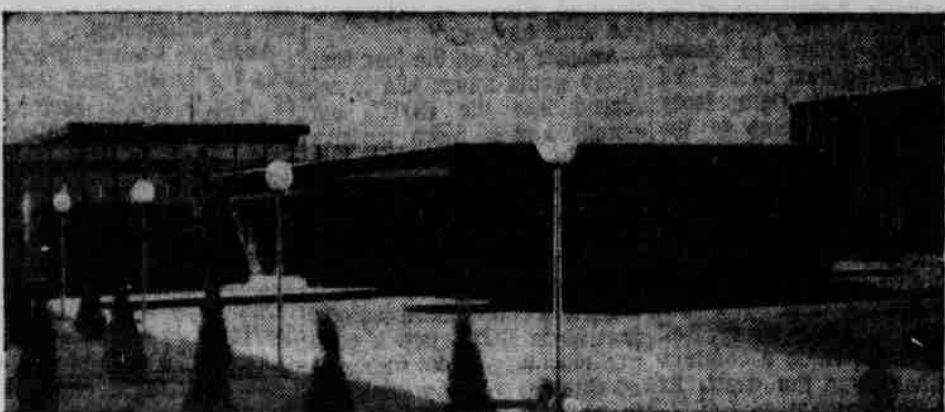
Larry Corrigan, Kansas State, has completed 7 of 15 passes for 126 yards to take the lead in that category. NU's Dennis Claridge has been successful 9 of 18 times for 104 yards to rank him 5th. Ron Gilbreath has completed 2 for 4 to gain 36 yards and a 12th listing.

Huge 4th in Receiving

Don Brewington has caught 5 passes for 93 yards for Oklahoma State. He is 1st in this category. NU end Jim Hulse has been hit 5 times for 60 yards and a 4th ranking. Dick McDaniel is 6th with 5 completions for 52 yards. Willie Ross is 11th, catching one pass for 32 yards.

Archie Cobb is 4th in punts and Dennis Claridge is 5th. In punt returns, Pat Clare is 2nd and Dennis Stuewe is 5th. Thornton is 5th in scoring with 12 points and Ron Meade is right behind him with 11.

IBM WILL INTERVIEW OCTOBER 17-18



Candidates for Bachelor's or Master's Degrees are invited to discuss opportunities in:

Engineering and Science

This is a unique opportunity to find out about the many career opportunities at IBM. The IBM representative can discuss with you typical jobs, various training programs, chances for advanced education, financial rewards, and company benefits—all important factors that affect your future.

SOME FACTS ABOUT IBM

An Unusual Growth Story: IBM has had one of the exceptional growth rates in industry. It has been a planned growth, based on ideas and products having an almost infinite application in our modern economy.

Diverse and Important Products: IBM develops, manufactures and markets a wide range of products in the data processing field. IBM computers and allied products play a vital role in the operations of business, industry, science, and government.

Across-the-Country Operations: Laboratory and manufacturing facilities are located in

Endicott, Kingston, Owego, Poughkeepsie, Vestal, Yorktown, N. Y.; Burlington, Vermont; Lexington, Ky.; San Jose, Calif.; Bethesda, Md.; and Rochester, Minn. Headquarters is located in New York City with sales and service offices in 180 major cities throughout the United States.

The Accent is on the Individual: No matter what type of work a person does at IBM, he is given all the responsibility he is able to handle, and all the support he needs to do his job. Advancement is by merit.

The areas in which IBM is engaged have an unlimited future. This is your opportunity to find out what that future has to offer you. All qualified applicants will be considered for employment without regard to race, creed, color or national origin.

Your placement officer can help you to learn more about IBM. He can give you literature describing the many career fields at IBM. He will arrange an appointment for you with the IBM representative. If you cannot attend an interview, write or call the manager of the nearest IBM office:

A. G. Potter, Branch Manager
IBM Corporation, Dept. 882
601 S. 12th Street
Lincoln 8, Nebraska
Phone: HE 5-3266

IBM You naturally have a better chance to grow with a growth company.

STUDENT INSURANCE

For the convenience of those students who were unable to obtain the student insurance at registration, descriptive brochures, application, and return envelopes will be available at the Student Union and at the Personnel Office of the University; they are also available at your Local Service Office at 1311 M Street—Phone HE 2-7519.

YOUR APPLICATION MUST BE IN BY OCTOBER 15th, so take advantage of this economical health coverage NOW!



JOHN VAN BLOOM & ASSOCIATES

1311 M Street

Lincoln

Phone HE 2-7519

HELP!!

Part Time
on call

Waiters and Waitresses
needed
for

Banquets and Parties
at the new

NEBRASKA CENTER
For Continuing Education
33rd & Holdrege

See or Call
Mr. Gossage or Mrs.
Jensen at the center