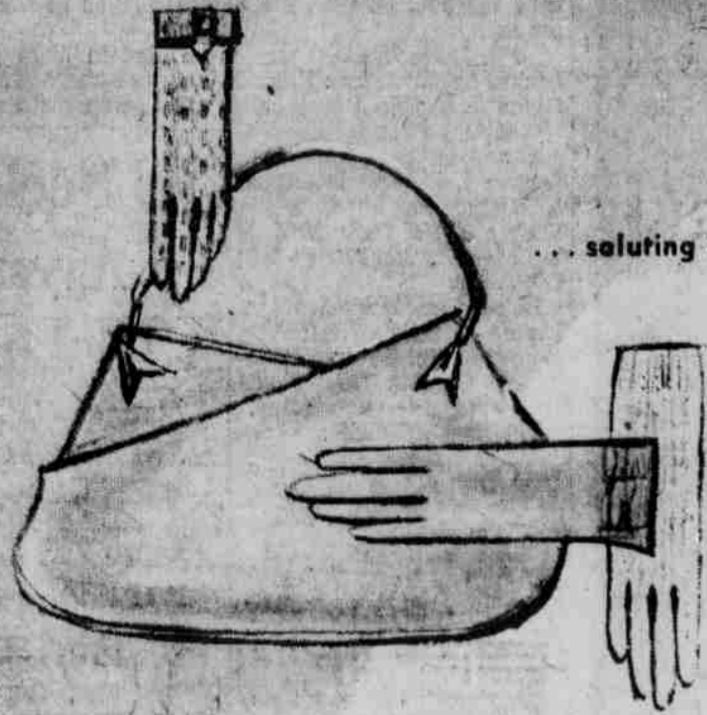


Shop daily 9:30 to 5:30, Thursdays 10 a.m. to 8:30 p.m.

Extra value. Community Savings Stamps with every purchase.

The smart campus sets on the move to Miller & Paine

... saluting students on Spring College Fashion Night, February 16, 6 to 8:30 p.m.



* **Coed accessory special**—gloves galore and all kinds of 'em at special college budget prices. (left to right) Leather palm with dainty knit stretch back in beige, white or black, **1.89**. Soft leather back with stretch nylon palm in white, dilly blue, sandstone, green, orange or lilac, **2.85**. Nylon stretch in white, beige, blue, pink or black or cotton string in black, white or beige, **89c**.

Seton casual handbags, assorted colors including beige, bone and brown, regularly 8.98, **only 5.98 plus tax**. Marshmallow and leather clutch bags, regularly 2.98 and 3.50, **only 1.98 plus tax**.

GLOVES AND HANDBAGS — FIRST

Danceable spring dresses—just arrived for "fun" occasions... like this R & K Original of flowing pure silk. Feminine lace insets in the bodice... cool and sleeveless. Black and white check, sizes 10 to 18. **25.95**. (Just one from an exciting new collection.)

POPULAR PRICE SHOP — SECOND

* **Paper back book parade**—including better series such as Anchor, Vintage, Bison and Meridian. Your key to a **20% discount** is your student I.D. card. Books like *Albert Schweitzer. An Anthology*, *World Underground* by Ludvig Holberg and *Walden* by Henry D. Thoreau, just to mention a few. Regularly 95c to 2.95. **20% off** to students only.

BOOK STORE — 131 S. 13th

* **Dorm favorites**—cheery stuffed animals that chase away the "study blues," specially purchased to give you special prices. "Jose" Burro, regularly 4.95, **sale 3.59**. "Bimbo" Bear, regularly 9.95, **sale 5.59**. "Playful Pup," regularly 11.95, **sale 7.59**. "Chi-chi" Poodle, regularly 9.95, **sale 5.59**. (Others to choose from, not shown.)

TOYVILLE — THIRD

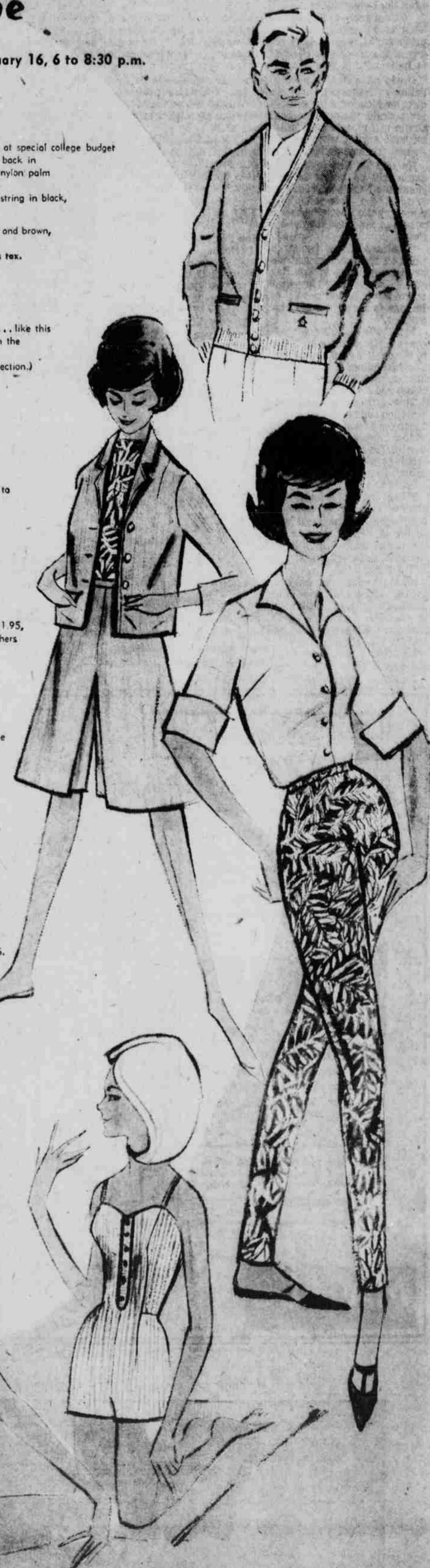
Golf sweaters for the man-about-campus—your favorites by Munsingwear... long modified bell sleeves for action-free comfort. Contrasting trim stripes and six-button front. 100% Dupont Orlon Acrylic for easy wash 'n wear. S-M-L-XL. Gold with white, sage with white or oxford heather with white. **13.95**. (Also available in V-neck pullover, same colors and sizes, **\$10**.)

MEN'S STORE — FIRST

White Stag, from the pages of your favorite fashion magazines—new mix 'n match "Bamboo" collection. Tan culotte, **8.95**. Leaf print knit blouse with 3/4 sleeves, **4.95**. Jacket, **8.95**. Pima roll-sleeve shirt, **5.95**. Leaf print cotton knit slacks, **7.95**. Other pieces not shown—slim skirt, 7.95. Solid cotton pants, 7.95. Calf skimmer or jamaica shorts, 5.95 each. Sizes 10 to 16. Also blue or green.

In the most fashionable swim—and soon to wear... the newest by Rose Marie Reid and Catalina. Many styles in solids, plaids and prints, sizes 10 to 16, **12.95 to 25.95**. Low back, Helena knit, choice of black and white or red and blue print by Rose Marie Reid, **23.95**. Stripe lastex "boy leg" suit in black and white or blue and white, **17.95**.

SPORTSWEAR — SECOND



Latest scoop on Miller's "Trip to New York" Contest!
Our Campus Reps are competing for this trip and you can help! Whenever you make a purchase at Miller's, give the name of your favorite M&P Campus Rep and increase her chances of winning.

- Monthly winners for January: Congratulations!**
- 1st Place:** Anne Hutchings, Alpha Gamma Delta (Wesleyan)
 - 2nd Place:** Mary Ann Gude, Zeta Tau Alpha
Karma Anderson, Burr-East Hall
 - 3rd Place:** Lois Deane, Delta Gemme

These are your M&P Campus Reps:

- | | |
|----------------------------------|-----------------------------------|
| Alpha Chi Omega—Eleanor Billings | Chi Omega—Judy Bruce |
| Alpha Omicron Pi—Jackie Collins | Delta Delta Delta—Betty Menke |
| Alpha Phi—Jane Jeffrey | Kappa Kappa Gamma—Kay Swaboda |
| Alpha Xi Delta—Joan Keating | Pi Beta Phi—Kathy Erickson |
| Delta Gamma—Lois Deane | Zeta Tau Alpha—Mary Ann Gude |
| Gamma Phi Beta—Jan Marler | Burr East—Kerma Andersen |
| Kappa Alpha Theta—Jan Hellweg | Fedde Hall—Gayle Blank |
| Kappa Delta—Mariene Piantz | Love Memorial Hall—Sharon Swanson |