

Pre-Finals Rush Snares 25 Pairs

Many couples have assured their favorite companion that they will be devoted even if finals are the main concern during the next few weeks. Nine pinnings and fifteen engagements have been revealed.

Pinnings

Ann Whitmore, Delta Gamma sophomore in Teachers College from Mitchell to Steve Hansen, Phi Gamma Delta sophomore in Arts and Sciences from Grand Island.

Jeanne Morrison, Delta Gamma sophomore in Teachers College from Lincoln to Don Purcell, Phi Delta Theta junior in Business Administration from Omaha.

Martha Shaffer, Kappa Alpha Theta sophomore in Arts and Sciences from Omaha to Dick Chamberlain, Phi Delta Theta senior in Arts and Sciences from Omaha.

Susie Crabbe, Alpha Xi Delta sophomore in Medical Technology from Lincoln to Darrell Frenzel, Delta Sigma Pi senior in Business Administration from Lincoln.

Judy Lowry, Alpha Chi Omega junior in Teachers College from Hastings to Rex Thompson, alum from Hastings.

Jackie Osborn, Bakersfield Junior College, Bakersfield, California to Charles Koopmann, Sigma Phi Epsilon junior in Business Administration from Stanton.

Beth Humphrey from Auburn to Gary Bowen, Acacia junior in Architecture from Page.

Karen Muehlich, Gamma Phi Beta sophomore in Teachers College from Schuyler to Tom Hudson, Sigma Phi Epsilon senior in Teachers College from Valley.

Sue Sahn, junior in Education at Valparaiso University, Valparaiso, Indiana, to Dick Valdez, Delta Upsilon senior in Engineering from Wahoo.

Engagements

Dorilyn Steiner, Terrace Hall junior in Teachers from Elmwood to Wayne Cheney, alum from Pilger.

Vicki Jennings, Gamma Phi Beta sophomore in Home Economics from Lincoln to Noel Martin, Sigma Chi junior in Teachers College from

Clay Center.

Lori Sutton, Love Hall sophomore in Home Economics from Silver Creek to Fred John, senior in Architecture from Rapid City, South Dakota.

Judith Goucher, Sigma Kappa senior in Home Economics to Elsie to Roland Rader, Acacia senior in Electrical Engineering from Hayes Center.

Lynn Gommon, Delta Gamma junior in Home Economics from Lincoln to Dick Hodge, Delta Tau Delta alum from Beatrice.

Mary Raben, Zeta Tau Alpha senior in Teachers College from Nebraska City to Dean Heebner, Peru State Teachers College alum.

Marilyn Zwiag, Alpha Omicron Pi senior in Teachers College from Lincoln to Jack Otterson, Beta Theta Pi junior in Engineering from Omaha.

Linda Cass, from Burwell to Keith Pelton, Acacia junior in Agriculture from Beatrice.

Betty Clegg, from Nampa, Idaho, to Dewey Wiens, Acacia junior in Teachers from Madrid.

Carolyn Stabenow, Gamma Phi Beta sophomore in Teachers from Hastings to Gary Gilpin, Alpha Tau Omega senior in Engineering from Grand Island.

Carole Stuchlik, Fedde Hall freshman from Aurora to Robert Ballard, junior in Engineering from Aurora.

Janet Sixel, sophomore in Teachers College from Scotia to Berne Skalla, from Beatrice.

Joni Reeves, Alpha Chi Omega senior in Teachers College from Omaha to John Ponceigo, senior in Teachers College from Chicago.

Sue Hammond, Kappa Alpha Theta senior in Arts and Sciences and Teachers College from Del Norte, Colorado, to Bill Spencer, Kappa Sigma alum at University of Colorado.

Mary Walt, Kappa Alpha Theta junior in Teachers College from Lincoln to Gary Walker, Sigma Chi senior in Arts and Sciences from Grand Island.

LITTLE MAN ON CAMPUS



"LOOKS LIKE I'LL BE A LITTLE LATE FOR WORK, EDDIE, I JUST GOT WORD WE'VE A FACULTY MEETING."

'Outstanding' Names

Continued from Page 1

tra and the Lincoln Symphony Orchestra. He has been president of the University Band and Gamma Lambda, the band fraternity.

He was elected to Pi Mu Epsilon, Sigma Xi, and Sigma Tau.

Dr. Frank Sorensen, professor of education, is a member of the Advisory Training Board of the U.S. Air Force, on the Advisory Board of the Arnold Air Society and is executive secretary of the Link Foundation.

He is also head of the aerospace education committee for the Air Force Association and past head of North Central college summer school directors.

Dr. Curtis Elliot, Dr. Curtis M. Elliot, professor of economics and insurance, is responsible for the development of the Insurance Department. He is the education consultant for the National Association of Insurance Agents.

Dean Snyder, He is a Snyder, Associate Dean of Student Affairs, has served as president of the

Nebraska Association of Deans of Women and Counselors of Girls. She is Mortar Board section director, member of the women's division of the Lincoln Chamber of Commerce, member of the American Association of University Women and member of the Nebraska Council on Teacher Education.

Rev. Petersen, The Reverend Alvin Petersen is pastor of the Lutheran Student Foundation.

He is currently president of the Campus Religious Workers, secretary of the American Lutheran Church Board of Education and past chairman of the Evangelical Lutheran Church Board of Education.

Dr. Dein, Dr. Raymond C. Dein, professor of accounting, has been elected to the presidency in the American Accounting Association for 1962. He has served as past secretary of the Faculty Senate, treasurer of Phi Beta Kappa, adviser to the Korn Cobs and is on the Interfraternity Board of Control. He is also an honorary member of the Innocents Society.

Drama Class To Give Role Conceptions

Need culture? Free culture? Now's your chance.

A short course in play enjoyment is being given by the Theater advanced acting class Jan. 17, 18 and 19 at 7 p.m. in room 201 of Temple building.

Each night scenes from three plays will be presented featuring a class member interpreting a major role.

The members of the class give the recital scenes as part of their final grade in the course. They pick a roll they wish to portray early in the semester and prepare the final scenes, memorizing lines and selecting costumes and scenery. Other parts in the scenes are read by class members.

Several of the actresses and actors have appeared in major roles in Howell Theater productions.

Tuesday evening the plays are: "The Importance of Being Earnest" by Oscar Wilde—actress, Linda Fixmer; "Caligula" by Albert Camus—actor, Phil Boroff; "Long Days' Journey into Night" by Eugene O'Neill—Elizabeth Debo.

Wednesday features: "Anastasia" by Guy Bolton—Maureen McGinley; "Caesar and Cleopatra" by G. B. Shaw—Kathy Burkhardt; "Strange Interlude" by Eugene O'Neill—Sharon Purbough.

On Thursday: "Macbeth" by Shakespeare—Margery Coffee; "St. Joan" by G. B. Shaw—Louise Shadley; "Hedder Babler" by Henrik Ibsen—Myrna Ems.

University Flying Club Meeting

Thursday, Jan. 19,
7:30 P.M.
UNION AIRPORT
Everyone Welcome

Sororities to Try Out For Follies Thursday

Thirteen sororities will compete in the Coed Follies try-outs Thursday night.

Making the selections for the Feb. 24 showing are Helen Snyder, Dean of Women; Miss Mary Jean Mulvaney, assistant professor of women's physical education; Mrs. Diane Butherus, Mrs. Jeanne Fosnot, art department; and Dr. Donald Olson, associate professor of speech.

Houses will try-out at the following times:

Alpha Chi Omega 6:30
Alpha Omicron Pi 6:45
Alpha Phi 7:00
Alpha Xi Delta 7:15
Chi Omega 7:30
Delta Delta Delta 7:45

Rolfmeyer Elected Home Ec President

Gladys Rolfmeyer has been selected as president of Home Economics Club.

Other officers elected were Kay Anderson, vice-president; Joan Kesling, secretary; Sonja Erickson, treasurer; Carol Crawford, historian and social chairman; Jane Price, publicity chairman; and Gay Nelson, membership chairman.

Main Feature Clock

Varsity: "The Sundowners," 1:29, 4:05, 6:41, 9:17.
State: "Swiss Family Robinson," 1:00, 3:50, 6:40, 9:30.

Nebraskan Want Ads

CLASSIFIED AD POLICY
Ads to be printed in the classified section of the Daily Nebraskan must be accompanied by the name of the person placing said ad.

FOR SALE
Red Flying Cloud Sedan—\$125. Good subject for restoration.
'47 Chevrolet. Very good condition. Call GR 7-8827.

Two high powered hunting rifles . . . GA 3-9921.

FOR RENT
Attractive furnished basement apartment for college couple. Cheap. Call GR 7-6739.

FOR SALE OR RENT
1956, 43' 2 bedroom Monarch trailer house. Washer. Cheap. IV 9-3979.

RIDES
Riders to New York. Leaving late Friday, January 27. Return to Lincoln Friday, February 3. Mike Stek: HE 2-5966.

REPAIRS
Watch Repairs
2-Day Service
Campus Bookstore

Delta Gamma 8:00
Gamma Phi Beta 8:15
Kappa Alpha Theta 8:30
Kappa Delta 8:45
Kappa Kappa Gamma 9:00
Pi Beta Phi 9:15
Zeta Tau Alpha 9:30

VARSITY

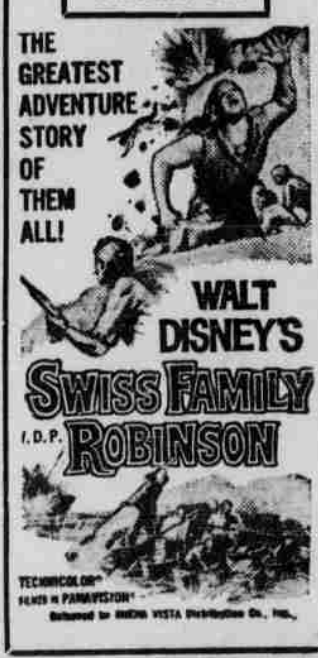
HERE COME THE SUNDOWNERS! They're fun people, fervent people. They have a tremendous urge to keep breathing

DEBORAH KERR
ROBERT MITCHELL
PETER USTINOV



THE SUNDOWNERS
TECHNICOLOR

STATE
14TH AND 7th
CHILDREN 35c



THE CAPTAIN ANNOUNCES HIS

3rd ANNUAL WINTER SALE

... SAVINGS TO 50%

SUITS

Reg.	NOW
55 ⁰⁰	38 ⁴³
60 ⁰⁰	41 ⁴³
65 ⁰⁰	44 ⁴³
70 ⁰⁰	48 ⁴³
74 ⁹⁵	51 ⁴³

DRESS SHIRTS

Reg. \$5
to \$6⁵⁰ **3⁹³**

**SWEATERS
30% OFF**

TIES

reg. 2.50
NOW **1⁶³**

VESTS

reg. 8.95
NOW **6⁴³**
reg. 9.95
NOW **6⁷³**

SLACKS

reg.	Now
13.95	9.73
14.95	10.43
15.95	11.03
16.95	12.73

Outer Wear

Loden King Jackets
reg. 35.00
NOW **23⁴³**

SPORT SHIRTS

Reg.	Now
5.00	3.43
5.95	4.13
6.95	4.83
7.95	5.53
8.95	6.23
9.95	6.83
10.95	7.63

TOP COATS

reg. \$50
NOW **37⁴⁹**

PAJAMAS

Reg. 5.95 to 7.95
NOW **4⁴³**

OUTER WEAR Values to 40% off
SPECIAL SLACKS . . . Reg. 22.50 NOW 12.99

— 1/2 PRICE TABLE —

— NO FALL MERCHANDISE HELD BACK —

**SPORT COATS
30% OFF**

The Captain's Walk
1127 "R" Street

ALL SALES FINAL — ALTERATIONS EXTRA