

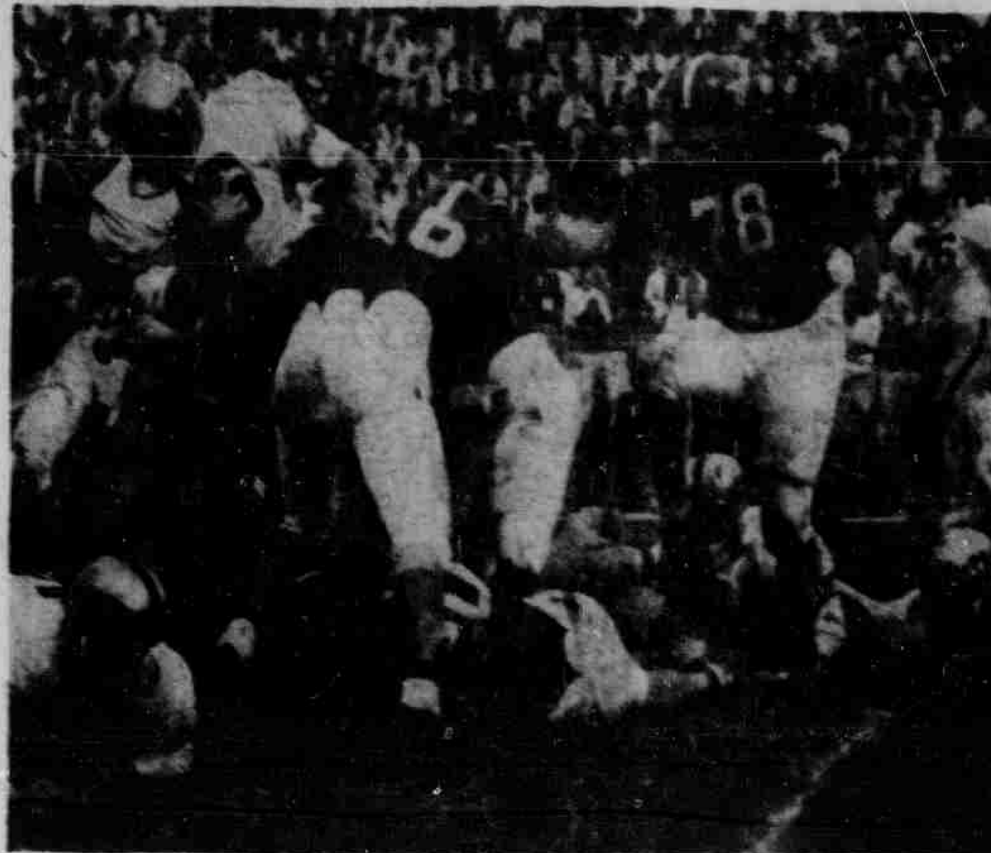
Huskers Dump Army On Long Pass Play

★ ★ ★

Statistics

	Armer	Seab.
First Down (Total)	7	1
By Rushing	3	4
By Passing	4	1
By Penalties	0	0
Rushing - (Number of Rushes)	35	26
Yards Gained	200	119
Number Yards Lost	18	29
Net Yards Gained	184	141
Forward Passes (Number Attempted)	22	5
Number Completed	11	3
Number Interception	1	0
Net Yards Gained	140	27
Total Plays (Rushes and Passes)	77	31
Total Net Yards	324	168
Punts (Number)	5	7
Average Yards	41.2	23.6
Kickoffs (Number)	3	4
Yards Returned	50	46
Number Punt Returns	3	4
Yards Punt Returns	8	8
Yards Kickoff Returns	62	39
Interception Returns	0	1
Yards Return	0	1
Fumbles (Number)	4	4
Yards Returned	4	4
Ball Lost on Downs	2	3
Penalties (Number)	4	4
Yards Penalties	4	4
Field Goals (Number Attempted)	1	0
Number Successful	1	0

Fischer returned the ensu-



HUSKERS HALT CADET

The kicking of Archie Cobb

Adams was the leading rusher for Army with 67 yards in 13 carries for a 5.2 average. Blanda hit 10 of 19 passes for 128 yards.

Individual Statistics

NERISSA					
	Times	Cr6	Gals	Last	Net Avg.
Fischer	2	30	88	0	88
Dillard	1	1	22	5	22
White	2	5	11	0	11
Thurston	1	10	39	0	39
Adams	4	4	37	0	37
Fulmer	2	2	9	1	9
Moore	1	5	1	13	12
PASSING					
	Att.	Comp.	Int's	Inc.	Pct.
Fischer	2	2	1	0	25
PASS RECEIVING					
Caught Yards Touchdowns					
	Times	Yards			
Fischer	2	30	23	0	23
PUNTING					
	Number	Yards	Average		
Dillard	4	6	22	30	30.0
Clubb	1	1	39	39.0	
ARMY					
KICKING					
	Times	Cr6	Last	Net Avg.	
Girschbauer	6	13	23	0	0
Adams	6	20	20	3.3	3.3
Thurston	13	67	0	67	67.0
Fulmer	4	12	0	12	12.0
Adams	4	12	0	12	12.0
Comors	7	37	0	37	37.0
PASSING					
	Att.	Comp.	Int's	Inc.	Pct.
Girschbauer	19	10	1	0	21
Schert	1	1	0	2	12
PASS RECEIVING					
Caught Yards Touchdowns					
	Times	Yards			
Girschbauer	4	4	40	0	0
Fulcher	4	4	40	0	0
Emstad	2	2	37	0	0
Stromen	3	3	41	0	0
Adams	0	0	0	0	0
PUNTING					
	Number	Yards	Average		

6 Unbeaten Grid Teams Risk Marks

City Fields
NE—Benton vs. Bessey

Boys
Ag College Fields
E—Phi Kappa Psi A vs.
Kappa Sigma A
W—Delta Tau Delta A vs.
Beta Theta Pi

2 Events on IM Track Schedule

Qualifying rounds for the intramural 880-yd. run and the pole vault will be held tonight on the Stadium track. The 880-yd. run will begin at 5:00 p.m. and the pole vault will start at 7:15 p.m.

Husker Harriers Win

Coach Frank Sevigne had words of praise for the cross country team. "The Scotts are shaping up real fine," he said. "If the whole team keeps im-

IM Grid Scores

IM Grid Scores

Friday
Theta Chi 7, Ag Men 0
Alpha Gamma Sigma 26, Pi
Kappa Phi 6
Pioneer 20, Delta Sigma Phi 0



Touch system or hunt-and-peck—
Results are perfect with

EATON'S CORRASABLE BOND


Typewriter Paper

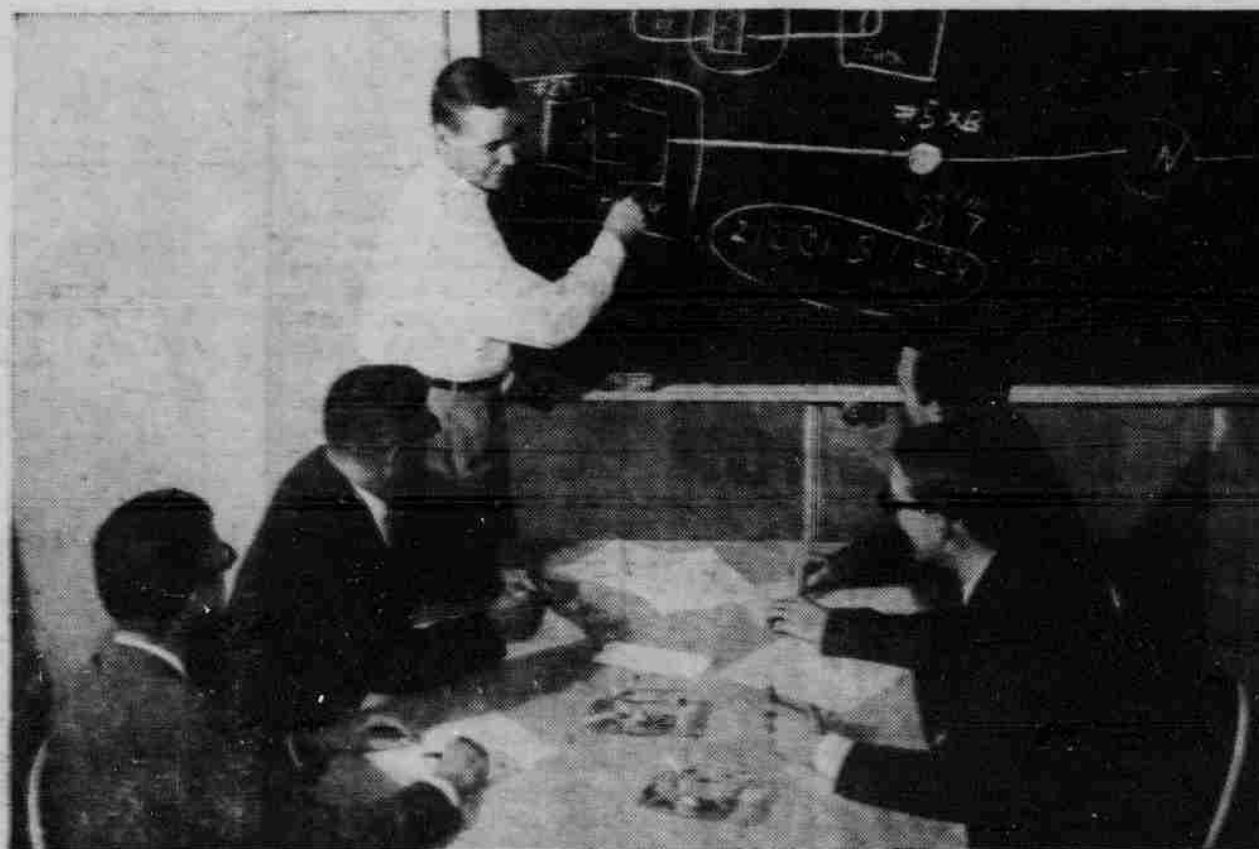
Whatever your typing talents, you can turn out neat, clean-looking work the first time, with Eaton's Corrasable Bond Paper. Reason why: Corrasable has a special surface—it *erases without a trace*. Just the flick of an ordinary pencil eraser and typographical errors disappear. No smears, no smudges. Saves time, temper and money!



CorrEsable is available in several weights — from onion-skin to heavy bond. In handy 100-sheet packets and 500-sheet ream boxes. A fine quality paper for all your typed assignments. Only Exton makes erasable CorrEsable.

EATON'S CORRĀSABLE BOND

A Berkshire Typewriter Paper
EATON PAPER CORPORATION  PITTSFIELD, MASSACHUSETTS



STU'S EXPLAINING HOW MACHINES WILL SOME DAY "OUTTALK" PEOPLE

Today, four years after starting his telephone career, Senior Engineer Stuart Smith heads a staff of people responsible for telegraph and data transmission engineering in the huge

Stu contacted 12 other companies before joining Pacific Telephone. "I don't think there's any limit to where a man can go in the telephone business today. Of course, this isn't the place for a guy looking for a soft touch. A man gets all the opportunity he can handle right from the start. He's limited only by how well and how fast he can cut it."

If Stu's talking about the kind of opportunity you're looking for, just visit your Placement Office for literature and additional information.

"Our number one aim is to have in all management jobs the most vital, intelligent, positive and imaginative men we can possibly find."



FREDERICK R. KAPPL,⁵ President
American Telephone & Telegraph Co.



BELL TELEPHONE COMPANIES

Engineers and scientists who will achieve Bachelor of Science or higher degrees by January or June of 1961 are invited to **ON CAMPUS INTERVIEWS** with an engineering representative of the **DOUGLAS AIRCRAFT COMPANY** on

Monday, Oct. 31

America's most exciting space and defense projects, including SATURN, SKYBOLT and MISSILEER — and others of like importance — have created outstanding long range opportunities at Douglas in the following fields:

Electrical	Welding
Electronics	Engineering Mechanics
Mechanical	Physics
Chemical	Mathematics
Aeronautical	Astronomy
Metallurgical	Astro-Physics

Openings exist at Douglas locations in Santa Monica and El Segundo, California and Charlotte, North Carolina.

If you are a U.S. citizen who will earn a qualifying degree, please contact your placement office for an appointment. If unable to do so, write to Mr. C. C. LaVene,

DOUGLAS AIRCRAFT COMPANY, INC.
3000 Ocean Park Blvd., Santa Monica, California