

# Union Commuter's Lunchroom Yielding to Regents Bookstore

The physical plant of the University will be altered in several instances when students return in the fall.

Among the changes is the plan to move the Regents Bookstore into the basement of the Student Union.

The move should be completed enough by fall to allow students to do all their book and supply purchasing in the Union.

Location of the bookstore will be in the space now devoted to the commuters lunchroom.

Business manager Carl Donaldson explained the move as a gradual one with part of the bookstore remaining in its present location in the basement of old Administration Hall until that building is torn down in the next year or two.

### Elgin Occupants

The Elgin building Nebraska Hall will have several new occupants by the fall including the printing and duplicating service now located in the basement of the West Stadium.

Also moving into the first floor of the building, Donaldson said, will be the University Press, which is now located in the basement of the new Administration Hall.

At present, only about 35 per cent at the east end of the Elgin building is being readied for occupancy.

The conservation and survey offices, will occupy part of the first floor in the Elgin building, while the Uni Press and the printing and duplicating will be in the basement.

On the second floor will be the Computer Center, financed by a \$95,000 grant.

Consideration is being given to space for the Graduate School of Social Work this fall on the second floor, Donaldson said.

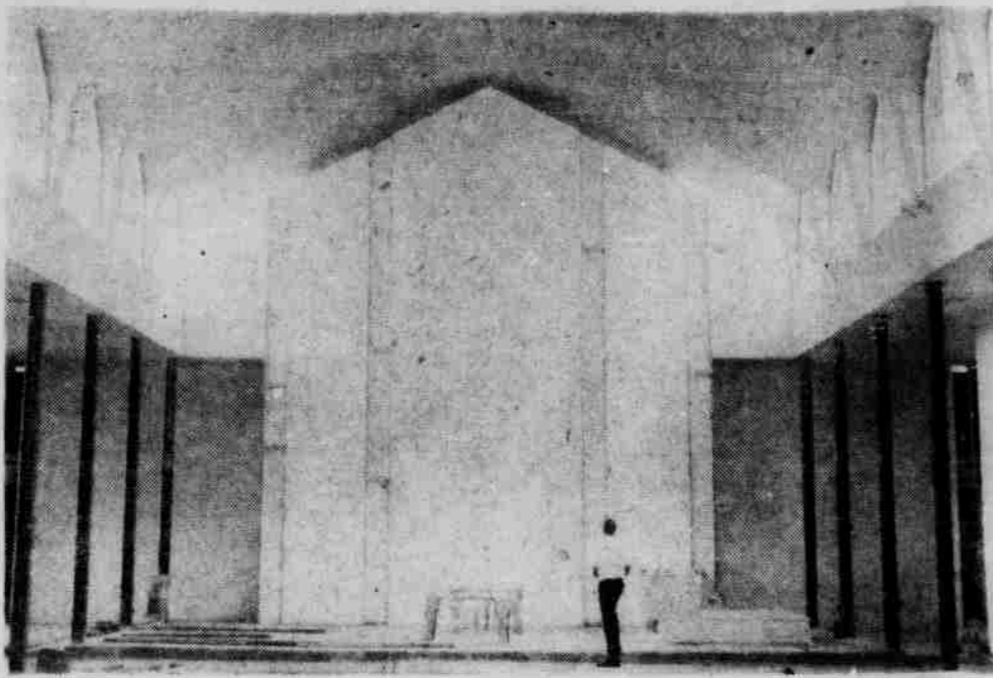
The planning and construction division of the University will at least be temporarily located in the building.

The complex telephone system will move into Nebraska Hall when the old Administration Building is torn down.

With the transfer of the conservation and survey offices, the old Nebraska Hall building will be razed, possibly before winter of next year, Donaldson said.

Some \$500,000 per year is being set aside for conversion of the Elgin building to University needs, he explained.

If space allows, he said that the ROTC might just as well



**BIG, ISN'T IT?**—The spacious interior of the Catholic Newman Club Center is maximized by the presence of one student. The Center is expected to be completed by August 1 and ready for use by the commencement of school.

continue using the Elgin building in the winter as it did this year.

Other departments slated for possible inclusion in the new Nebraska Hall are the School of Journalism, now located on the third floor of Burnett Hall; photographic productions, now in the basement of West Stadium; and the extension division, Donaldson noted.

The Grand Hotel at 12th and Q will be torn down soon and leveled off for parking until use at a future date, Donaldson pointed out.

On the high priority list for the University's building program are a new music and physics building, while the chemistry building, Avery Lab, is becoming fast ver-crowded, he said.

"The Kellogg Center will be half completed when students return to classes next fall" said Verner Meyers, director of the division of plant planning and construction.

Meyers reported that at present 20 to 25 per cent of the building had been completed and that construction would be finished by the early part of next year.

He said that the youth or the three-story wing to the north is much farther along than the nine-story residence wing on the front.

The youth wing will be used for conference, entertainment and study rooms of youth while the main part will host many conventions and conferences. Meyers said that some

of the interior equipment had been bought all ready.

### Three New Chapels

Other construction on campus includes the building or finishing of three new chapel buildings.

The Newman Club Chapel will be completed by August 1 and facilities will be opened for use when classes resume.

The \$308,000 Catholic center was built in contemporary style. It includes a church, lounge, recreation center and living quarters. Special features include an inside courtyard with a garden and hand-carvings in wood made by a sculptor from Boston.

The Wesley Foundation plans to break ground on June 9 for the construction of their \$225,000 center on 16th street. It will be finished by the summer of 1961.

### Episcopal Center

Supported by the Methodists of Nebraska association, features included are a chapel, student lounge, library, auditorium, music room, prayer chapel and student apartments.

The Episcopal Student Center will also begin construction on its new chapel during the summer and should be completed by the second semester.

The \$80,000 student center will have a temporary chapel and offices in it. Plans are to build a new chapel in the future and the one in the student center will serve as a temporary one.

## SC Reign Is Over For Year

### Officers Elected.

The 1959-60 Student Council finished its duties and relinquished its position as the supreme body in student government Wednesday with the swearing in of the 1960-61 Council.

Retiring president Jack Nielsen swore in Ken Tempero as the new president, who in turn swore in the remainder of the incoming Council members.

Before Nielsen left the Council as president, he was presented with a certificate of recognition for his leadership of the Council and service to the University which included the signatures of all the members of the Council. He was also the recipient of a gold potato as a token of affection from the Council members.

Election of the remaining officers for the Council followed. Jim Samples, junior representative from the Arts and Sciences college was elected to the post of Student Council treasurer. Al Plummer, also a junior member from Arts and Sciences, was elected corresponding secretary. Suzanne Tinan, junior representative from AWS, was elected as recording secretary.

## ... Cornhusker Honors

(Cont. from page 1)

ball and baseball squads, president of the N Club, top athletic scholar, members of the Innocents Society, president of Sigma Chi and recipient of a national athletic scholarship for graduate study.

### Noted Surgeon

Dr. Merle Musselman who is the chairman and professor of the Department of Surgery at the College of Medicine. He is also a noted surgeon and author of many articles and one book on antibiotics.

Mary Jean Mulvaney was named as the tireless worker with a smile and warm personality. Member of the girls PE faculty, she is also advisor to many organizations including Union, AWS and Mortar Board. She became

an honorary member of Mortar Board in 1959.

George Round is the first and only NU Director of Public Relations. He has worked to bring the Nebraska legislature information on the needs of the University and had helped bring an increase in building funds for the University.

Diana Maxwell who is the "campus leader" who has been editor of the Daily Nebraskan, secretary of Mortar Board, treasurer of IWA, a member of the Union Advisory Board and Pi Beta Kappa.

### Dentistry Senior

Garth A. James who is a senior in the College of Dentistry. He is a member Delta Sigma Delta, Sigma Xi and is listed in American Men of Science.

Ralph Hazen who is a 1958

transfer from Iowa State. He is treasurer of Block and Bridge and a member of Alpha Zeta.

Bob Blair who was nominated for "his good character, fine scholastic record and personality." He served as president of the Big Eight IFC, vice president of the NU IFC, cadet colonel of the Army ROTC, a member of Innocents and president of Sigma Alpha Epsilon fraternity.

Dr. Lane Lancaster who is retiring after 30 years of service to the University has earned the award for standing "in the finest tradition of a scholar and gentleman." He has authored several political science books. The fact that he has been a favorite of students, year after year, is the highest tribute that can be paid to him.

## MAGEE'S



FROM A WELL OF KNOWLEDGE COME OUR FASHIONS FOR GENTLEMEN SCHOLARS



The attractive hopsack weave is a material from which success is wrought in a suit. Gentlemen will demonstrate their own success when wearing a suit of this ilk which the proprietor has in stock in two fashionable colors, natural and loden. Street level sports-wear shop. Suit ..... 29.95



No longer need a gentleman broil in an old fangled shirt. Modern shirts crop sleeves short while collar buttons down in the smart tradition. The silk four-in-hand is correct accompaniment. A collection of both is on hand. Street level furnishings department.

Shirt . 5.00 Four-in-hand . 2.50



College gentlemen are indeed colorful in their dress this season. They take to their wardrobes the handsome colorful cottons hand woven in India and which we have tailored meticulously into the favored sport jacket of the day. To be found in street level sportswear shop.

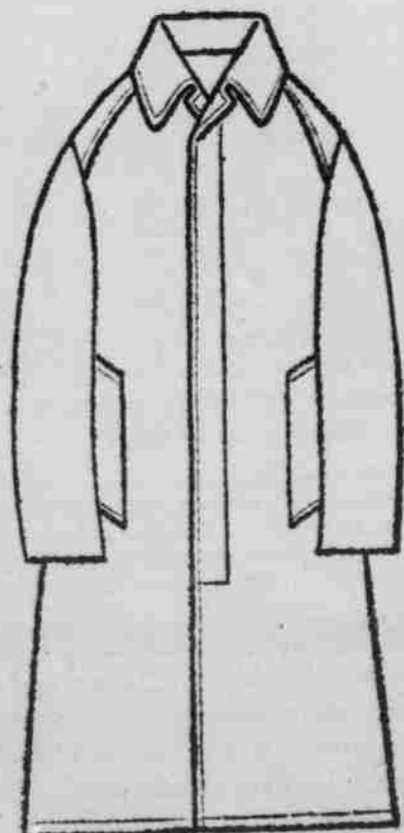
Madras sport jacket ..... 27.95



## MAN VERSUS WEATHER

While the proprietor is aware of meteorological announcements of atmospheric conditions, he still advises his customers to equip themselves with this time honored conquerer of rainfall, highly protective against the weather. To be found on our second floor in the natural shade at .....

19.95



Consider this a cordial invitation from the management to inspect these garments and many others suited to your distinctive taste.

## USED BOOKS WANTED

This month our annual spring buying season starts. — A time when representatives of our organization will go to over 200 campuses in the 50 states to buy books from more than half a million students. These books are purchased for resale at University of Nebraska and hundreds of other schools throughout the U. S.

The expanding demand for our experience and knowledge of true book values enables our representatives to buy books on campuses across the country from New York to Hawaii. You as a student here at the University of Nebraska also receive the benefit from this knowledge by receiving more cash for all books whether used on this campus or not.

Another by product of this endeavor and preparation for successful completion of our campaign throughout the U. S. YOU THE UNIVERSITY OF NEBRASKA STUDENT will profit by an over-all savings of more than \$75,000 this coming season. Your required books are selected and held for resale to you at savings from 30% to 50% (books for use on this campus are selected prior to being offered for sale on the open market — this accounts for our large selection of used books for more courses).

As you well know books are revised quite regularly, so — SELL BOOKS NOW FOR HIGHEST CASH PRICES.

NEBRASKA BOOKSTORE