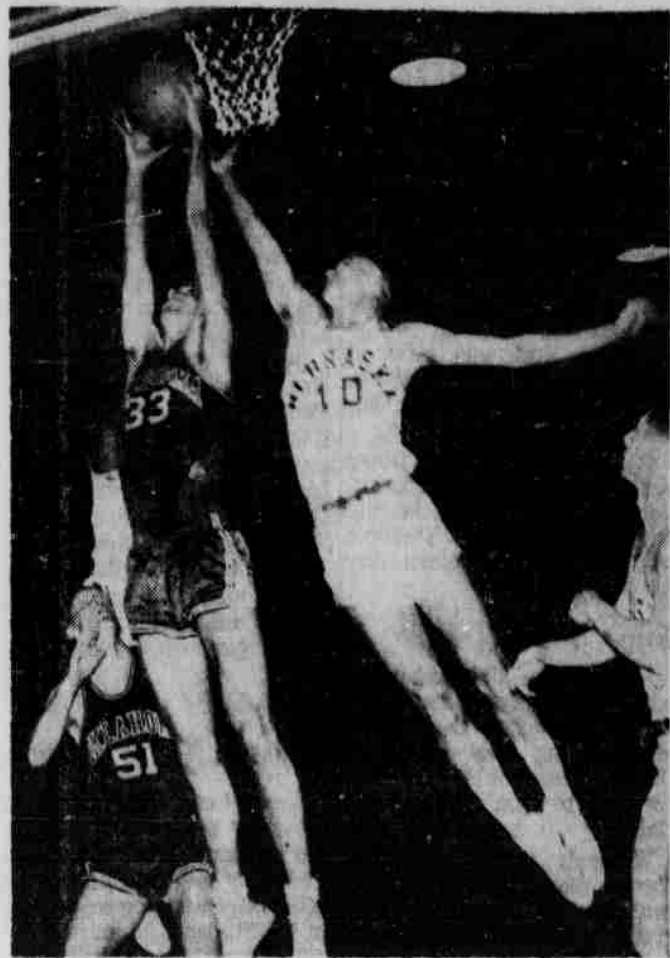


# Ballet Basketball



Brian Etheridge steals a rebound from Husker Jan Wall.

# Turner Breaks 1,000, But OU Spoils Nebraska's Two-Game Win Streak

**By Dave Calhoun**  
Nebraska's basketball team, hot on the victory trail, with two Conference wins in as many outings, dropped a heartbreaker to Oklahoma, 50-49, at the Coliseum Monday night.

The Huskers, cold all evening, couldn't close the gap in the final minutes, although they bounced back from an eight point deficit mid-way in the second half.

With 4:35 left in the game Al Maxey hit a short jump shot to bring the score to a 43-42 reading with Oklahoma still holding the edge.

**Wall Sights In**  
Thirty seconds later Jim Kowalke fouled Sooner guard, George Kernek. Kernek missed his free toss. Jan Wall took the ball down court and sighted in at the 40-foot mark.

His shot ripped the nets, giving Nebraska the scoring advantage for the first time of the evening, 44-43.

Maxey fouled Kernek and again Kernek missed the toss.

Nebraska's cautious pivot

man, Al Buuck, hampered in the second half by four fouls earlier in the game, pumped in a free throw to add another point to the Husker tally.

Oklahoma's Ray Lewis hit a turning jumper to put the Sooners back in command of the score board.

**Didn't Miss**  
As the seconds ticked away, Nebraska, needing the ball fouled Kernek again. This time he didn't miss. He walked away from the line scoring two charity tosses.

Maxey countered with a set shot from the corner to cut the lead back to one point for the Sooner, 48-47.

With 22 seconds left Kernek was fouled again. He walked to the line and shot his first throw. The ball bounced off the back of the rim, high into the air and back down through the nets.

Kernek swished his second free throw.

Nebraska drove down court, waiting for the right moment.

That moment never came.

With one second left Jim Kowalke hit a 20 foot jump shot, but the Huskers were still one point short as the gun sounded.

**Turner Scores 1000th**  
The game was stopped in the middle of the first half, after Herschell Turner, Nebraska's captain from Indianapolis, Ind. scored his 1000th point.

Both numbers 999 and 1000 came on free tosses when the clock read 10:09.

Athletic Director Bill Orwig presented to H. T. the point scoring ball and congratulated him for being the first player in the history of the school to score 1000 points.

As he gave him the ball Orwig said, "Someday you'll show your grandchildren this ball and say, 'that's the one old Hersch scored the 1000th point with'."

**Cold in the first Half**  
The Huskers were ice cold from the field in the first half, hitting five out of 30 attempts for twenty per cent. They warmed up in the second half, ending the game

with 26.2 per cent.

**On the free throw line,** strong point in the previous two games, Nebraska hit an evening's average of 71.4 per cent, although the Huskers hit 81.8 per cent in the first half.

Oklahoma topped both average marks, hitting 34 per cent from the field and 72 per cent from the free throw marker.

**High scorer for the Huskers** was Kowalke with 16, while Maxey pumped in 13.

Etheridge was high for the Sooners with 15, while Lewis

added 14 for the winners.

The Huskers meet Oklahoma State next Saturday in the Coliseum. The Conference tilt will ring down the curtain on the cagers home court, although they will take a road trip to Kansas and Kansas State the following week.

OKLAHOMA		NEBRASKA	
F	T	F	T
Kernek	0-4-4	Buuck	1-2-3
Hudson	0-1-1	Harry	1-0-2
Lee	2-2-2	Kowalke	7-2-16
Leonard	1-0-2	Maxey	3-0-13
Price	3-1-7	Turner	3-2-11
Heid/beth	0-0-0	Barth	0-0-0
Etheridge	4-9-15	Bowers	0-0-0
Fouts	1-0-1	Hooks	0-0-0
Lewis	5-4-14	Wall	3-0-6
		Swett	0-0-0
<b>Totals</b>	<b>16-35-50</b>	<b>Totals</b>	<b>17-31-69</b>
Oklahoma	50-49	Nebraska	49-50

# Bridge Players Rejoice; 'Freddy' To Begin Wed.

Bridge players and future bridge players can shout "Hallelujah" because Alfred "Freddy" Sheinwold is coming. The Daily Nebraskan will run SHEINWOLD ON BRIDGE as a weekly feature starting this Wednesday.

If you count bridge 15-two, pair's four, and double run of three is 12, you need help, and "Freddy" Sheinwold is the man to help you.

He holds the record of the greatest one-year accumulation of Master bridge points by any bridge writer in the history of the game. His 631

# IM Basketball Race Narrows As Tourney Enters Second Week

The Intramural Basketball Tourney swung into action last week with 21 games completed. The All-University double-elimination tourney continues this week as all squads are slated to move into action.

Tonight's schedule sends some of the top Independent teams to battle. These games are:

**The Losers (6-0) vs. Dental College (3-3)**  
**Pathologists (5-1) vs. Geographers (3-2)**  
**Wesley House (4-2) vs. Law College (4-1)**  
**Clatonians (3-3) vs. Phi Epsilon Kappa (5-0)**

Other games tonight include three Burr-Selleck 'B' tourney games and three Corn-Shucks contests. Fraternity 'A' teams were

the feature attraction in Wednesday's opening games. Eight games were played.

**Sigma Nu Wins**  
Farm House edged Corn-husker, 29-27. Sigma Alpha Mu downed Pioneer Co-op, 32-31. Pi Kappa Phi won a squeaker over Acadia, 26-25, and in the night's top game, Sigma Nu upset Alpha Tau Omega, 37-35.

In other games Kappa Sigma plastered Phi Kappa Psi, 51-30. Beta Theta Pi out-classed Sigma Phi Epsilon, 57-39. Beta Sigma Psi beat Alpha Gamma Rho, 40-31, and Phi Gamma Delta won a 42-27 count from Delta Upsilon.

The hero of the Sigma Nu surprise win over pre-tourney favorite ATO was Don Wenzl. With the score tied at the end of the game, Wenzl calmly sunk two free throws to give the Nu's the victory.

Top scorer of the games was Tau's Stott with 14, while Wenzl led the Sig Nu attack with 12, followed by Seymour with 10.

**Morse-Greer Combine**  
Ron Morse and Jim Greer scored 12 and 11 points respectively to pace Farm House over the Cornhusker. The top scorer for the losers was Gene Nurnberg with nine.

Oscar Bredthauer dumped in 19 big points as the Beta Sigma Psis downed the AGRs, paced by Bob Paine's nine points.

Bill Tuning scored 13 points in the Kappa Sig win. Larry Romjue paced the Beta Theta Pi win with 18 and Phi Gamma Delta's victory was sparked by an 11 point performance by Gary Warden.

The top games of Thursday's action again occurred in the Fraternity 'A' games. Four second-round battles were played.

Phi Gamma Delta reversed Sigma Nu's lucky streak from the previous night, downing the Nu's 38-34 in a real thriller.

The Phi Gams held a 8-4 first quarter lead and increased it to 26-14 at the half.

With Warden resting briefly the Sig Nu's started a rally in the third stanza. Seymour's basket midway in the last quarter closed the gap to six points, 33-27.

The Phi Gams countered with buckets by Dick Stacy and John Gutschlag to hold a 37-29 lead with three minutes left.

**Top board man for the Phi**

Gams was Gutschlag, who also added 10 points to the winner's cause.

In other Frat 'A' action, Sigma Alpha Mu thumped Pi Kappa Phi, 33-26. Jon Okun led the Sammy attack with 11 points, and received valuable aid from Howard Lepton, Don Novicoff and Harv Pearlman. Don Frickel and Warren Hill both had eight for the losers.

**Farm House Falls**  
Beta Sigma Psi trounced Farm House, 49-24. The Beta Sigs, a surprise contender, finished third behind Farm House in regular season play in League 3-A.

Kappa Sigma continued to roll along with a 47-32 measurement of Beta Theta Pi. The Kappa Sigs were paced by big Bob Prokup's 19 points as they notched their seventh straight victory, and remained the only unbeaten Frat 'A' team.

Gus I defeated MacLean 27-19, and Seaton II won a 2-0 forfeit over Gus II in Thursday night's Burr-Selleck 'A' team action.

Larry Tomlinson led the Gus I attack with 11 points while Larry Dodson was high for MacLean with eight.

In other Thursday games, Delta Upsilon-B cooled Phi Gamma Delta-B, 26-19, and Sigma Nu-B throttled Beta Theta Pi-B, 32-24, in the opening Frat 'B' team games.

**Corn Shucks Tourney**  
In the Corn-Shucks Tourney, Brown Palace slipped by Delta Sigma Pi, 37-32, and Ag Men gained a 2-0 forfeit over Theta Chi.

Friday's games included two Fraternity 'C' team scraps. Beta Theta Pi defeated Sigma Phi Epsilon and Alpha Tau Omega downed Phi Kappa Psi.

**Inside Intramurals**  
*By Dave Wohlfarth*

The Intramural Basketball Tourney is off and running and if opening action is any indication of future thrillers, the tourney should be a real good one.

Close games were a dime a dozen when action began Wednesday night. Half of the eight Fraternity 'A' team games were real squeakers, with one and two point margins. Last-minutes finishes seemed to be the order of the day.

Things are really popping in the lower bracket of that Frat 'A' tourney.

The top two teams in League 2-A, Alpha Tau Omega and Sigma Nu met Wednesday night, with the Sig Nu's coming out on top. On the same night Phi Gamma Delta, number four in the league standings, knocked off third place finisher Delta Upsilon.

Thursday, the Phi Gams beat the Sig Nu's in a sparkling display of outside shooting. This enabled the Phi Gams, who entered the tourney with a mediocre 3-3 record, to move into the semi-finals, ahead of all their league leaders.

The Sigma Nu win over the ATO's was the early shocker. The ATO's had a height and depth advantage but the NU's combined hot outside shooting and good ball-handling to win.

Although the tourney is double elimination and these two above teams are still in contention, Kappa Sigma now looks like the team to beat for the Frat 'A' title.

The Kappa Sigma attack is built around one of the top intramural cagers, Bob Prokup who handles the pivot position for KS but is deadly from anywhere. 'Porky' is a past Intramural All-Star and a cinch repeater.

Phi Gamma Delta appears to have the best shot at shacking the unbeaten Kappa Sigs. If the Phi Gams can continue their play as exhibited against Sigma Nu, they could give anybody a rough time.

Top players spotted thus far in tourney action are Prokup (Kappa Sigma), Don Wenzl and Ron Seymour (Sigma Nu), Gary Warden and John Gutschlag (Phi Gamma Delta), Larry Ronjue (Beta Theta Pi), Bob Brandes and Tom Stott (Alpha Tau Omega), Oscar Bredthauer (Beta Sigma Psi), and Howard Lepton (Sigma Alpha Mu).

Attention now focuses on the Independent Tourney which begins tonight.

Phi Epsilon Kappa (6-0), ranked number one in the latest Pre-Tourney Top 10, is the top contender for the crown, but may have its hands full against Law College.

Law College, ranked number two, was edged 24-22 in the regular season by PEK for their only loss against four wins.

Darkhorse of the Independent chase is The Losers, who sport a 6-0 mark and the League 9 title.

All I-M managers will receive a letter this week from the Daily Nebraskan. They are requested to pick an all-opponent team for 'A', 'B' and 'C' Leagues. The selections are to be based on season's performances and will aid the Rag Sports Staff in selecting its All-University team.

The one stipulation is that any organization not returning the all-opponent squads will be ineligible to have any team member represented on the All-Star team. This is to insure better co-operation and selection.

**HOLLYWOOD BOWL**  
Open Bowling Weekdays Till 5  
Sat. All Day, Sundays Till 5  
24 Lanes—Automatic Pinsetters  
Restaurant . . . Barber Shop  
920 N. 48th—PHONE IN 6-1911  
Use Nebraskan Classifieds



A Campus-to-Career Case History

Dick Petzold discusses time charges for a customer's telephone installation with an administrative assistant.

# How to avoid a "dead end" career: read Dick Petzold's story

While a senior at the University of Maryland, accounting major Richard G. Petzold made some definite decisions about his future. "I wanted to work for an established company," he says, "but I didn't want to get lost in a 'dead end' job."

Dick joined the Chesapeake and Potomac Telephone Company in Washington, D. C., right after graduating in June, 1956. Following three months of orientation, he became a supervisor in Revenue Accounting, where he continued training in a productive capacity, with 15 people reporting to him. Here, he suggested a number of methods improvements which were adopted.

Far from a "dead end" career, Dick's took him into many operating areas:

- to General Accounting, where he handled market research projects, including a Customer Opinion Survey for four Bell System companies...
- to Disbursements Accounting, for IBM-equipment training and, later on, the supervision of Payroll Deduction procedures...
- to Personnel Relations, where he coordinated a special, four-company "absentee" study and presented findings to an important, top-level conference...
- to Disbursements Accounting again, where he is now Supervisor, Labor and Material, with an administrative assistant and 10 clerks under his guidance.

"The telephone company brings out the best in you," says Dick. "I've developed new skills, acquired self-reliance, and learned how to supervise and work with people. What's the opposite of a 'dead end' career? Well, I've got it!"

Dick Petzold earned a B.S. degree in Accounting while in college. He's one of many young men with varied college backgrounds who are finding rewarding careers with the Bell Telephone Companies. Learn about opportunities for you. See the Bell interviewer when he visits your campus—and read the Bell Telephone booklet in your Placement Office.



**Nebraskan Want Ads**

No. Words	1 da.	2 da.	3 da.	4 da.
1-10	.40	.65	.85	1.00
11-15	.50	.80	1.05	1.25
16-20	.60	.95	1.25	1.50
21-25	.70	1.10	1.45	1.75
26-30	.80	1.25	1.65	2.00
31-35	.90	1.40	1.85	2.25
36-40	1.00	1.55	2.05	2.50

These low-cost rates apply to Want Ads which are placed for consecutive days and are paid for within 10 days after the ad expires or is canceled.

Ads to be printed in the classified section of the Daily Nebraskan must be accompanied by the name of the person placing said ad.

**LOST**  
Bulova wristwatch. Monday between Student Union and Andrews. Call 112-4395 or return to 1542 O. Howard.

**PERSONAL**  
For all your wants and needs, try the Daily Nebraskan Classifieds.



**Stays moist and firm throughout your shave!**  
regular or new mentholated

Take your choice of new, cool mentholated or regular Smooth Shave. Both have rich, thick Old Spice quality-lather that won't dry up before you've finished shaving. Both soften your beard instantly—end razor drag completely. For the closest, cleanest, quickest shaves...try Old Spice Smooth Shave!

**Old Spice**  
SMOOTH SHAVE  
by SHULTON

100¢