

Pledge Classes Will Compete For ATO 'Help Week' Trophy

Fraternity pledge classes will be competing this year for a new four-foot traveling "Help Week" trophy.

The trophy is being given by the Alpha Tau Omega fraternity to a pledge class, other than ATO, which is most outstanding in scholarship, initiates the most of its class and has the highest composite record of activities of the previous semester.

Donated by an alum, O. H. Schellenberg of St. Petersburg, Fla., it will be awarded after the last pledge class is initiated in the spring.

In order to keep the trophy permanently, it must be awarded to the same fraternity three years in succession.

The board of judges will include two alums of ATO, two faculty representatives and two members of the Interfraternity Council.

The project was initiated by Buzz Shuett, scholarship chairman of ATO, to encourage the IFC project of establishing "help weeks" in place of "hell weeks."



BIG TROPHY—Alpha Tau Omega active Bill Haskell admires the four-foot trophy to be presented by the ATO's next spring to the outstanding fraternity pledge class, other than ATO. The project was initiated to encourage "help" instead of "hell" weeks.

Concert Campaign To Open Students Can Win Free Membership

Students who would like to receive free membership to Community Concerts may do so by becoming salesmen next week.

Besides receiving one free membership for every 10 tickets sold, an RCA Victor hi-fi set is also offered. It will be awarded following the campaign to the person selling the most tickets.

Kick-off Dinner

The kick-off dinner will be held Tuesday at 6 p.m. in the Student Union Pan American room. For those who would like to attend the free dinner and sell memberships, reservations must be made with Bill McKinnon, Union program manager.

Memberships are \$4 for four concerts which include Verdi's "Rigoletto" in English, "Voyage to the Moon" presented by the Boston Opera Company, the National Ballet of Canada and "Gay '90's Nite."

First Concert

The first concert of the season will be "Gay '90's Nite," Oct. 27, and will feature the Hollywood Bowl "Pops Concert Division," starring Pat Morrison.

Also with the company is a can-can group, the Flora Dora Sextette, the Hippodrome Ballroom Octet and Very Lee, who appears with the Gaslight Orchestra presenting songs from the turn of the century.

The drive will continue through Oct. 20.

On Spreading Spirit: Noisemaker Gimmicks Would Liven Stands

By Dick Stuckey

Everything from duck calls to cherry bombs to a cadence crushing of paper cups was suggested for noisemakers at games on a Daily Nebraskan Crib inquiry.

Dean Jenkins offered three questionable gimmicks for rapid spreading of contagious spirit: the unzipping and zipping of coat zippers on cold days (again in unison), the blowing of tissue paper on pocket combs, and the skilled use of a Zither—an Alpine goat-calling horn which produces an amazing screaming sound similar to the call of the Zeus goat.

Judy Porkorny said, "I think cow bells are nice myself," and several others suggested the same.

Several Sigma Alpha Mu's offered the use of their portable siren and an anonymous representative of the ROTC department suggested a short range missile directed at the Carillon Tower.

One possible idea was to request Pop Kline to have his vendors sell popcorn to the student section in small megaphones to facilitate vocal strength.

Other suggestions for general noisemaking included trumpets, New Year's Eve remnants, cow horns, moose horns, tambourines and cymbals.

Joe Tooley thought complimentary bubble gum to sororities would liven things, and Bill Wells, University cheerleader, offered to put a cow under the springboard used by the Yell Squad to count to six in agonizing bleats as the team ricocheted from the bovine.

One positive idea man thought if all Dorm people were given Voodoo dolls of the Greeks, and the Greeks likewise of the Dorm people, then spirit could be advanced greatly in needle-punching fashion.

Moore Is FB Star

Lineman Jim Moore has been picked by the Daily Nebraskan sports staff as "Star of the Week" for his outstanding play in the Nebraska-Oregon State game Saturday.

For details: See Page 3

Rag Index To Activities Starts Today

The Daily Nebraskan today is beginning a daily 4th-page index of campus events and meetings.

The column is open to any group that wishes to announce a meeting or event.

Stories regarding the event or meeting, still, of course, will be publicized, but the idea behind the column is to provide a quick index to campus activities for the day.

Announcements for meetings of the following day should be called or brought in to the Nebraskan office in the Student Union basement by 2 p.m.

Announcement for Thursday meetings should be turned in Tuesday afternoon and announcements of weekend events should be brought to the Nebraskan office on Thursday.

Late Fees Boost Income By \$214

University income from late student fees was increased by \$214 this fall, according to James A. Wickless, University accountant.

This year's total was \$2,100, compared to \$1,886 in 1958.

Wickless said that the income from late fees goes to the general University fund along with the rest of the tuition.

Nothing New About Husker Chant . . . 1924 Songbook Reveals "Extinct" Melodies

By Sony Whalen

It must be true. Proclaimed by the cheerleaders as one of the "original" alma mater songs, the revived chant evidently once held a revered place in loyal Cornhusker hearts.

Examination of a 1924 University songbook disclosed the Chant not only adorning the first page, but also used with musical notes for a cover design.

But then this isn't the only "oldie" listed. More than 110 pages are filled with songs which probably a good share of the campus would not recognize now.

'Field Song'

"The Cornhusker," known now by only the athletes of the University, is called the "official field song of the University." Members of the football squad sing the song before a game.

The Chant also formed the base for several other songs, among them "U-Rah-Nebraska," which starts out with "Dear old Nebraska, loyal and true

Let us pledge once again our allegiance to you . . . Let us sing of your spirit that never will die . . . But will carry you on with our old battle cry."

The Chant follows, then another verse, and the Chant again.

The University was called U.N.I. as much as Cornhusker in those days.

"Standing By"

"If," another alma mater-type song says, "Had I a thousand voices, full with silver phrase, Each one would be recalling my glad Cornhusker days; And if some ear should list, as my song is floating by, 'Twould hear the thrilling echo of U.U.U.N.I."

Another rallying song, "Standing By," shouts "Oh U-N-I! We're standing by U-N-I, oh! U-N-I! Then do your best, we'll do the rest, U-N-I, oh! U-N-I! Buck the line with all your might, Circle ends, both left and right, and when you're holding, hold them tight, U-N-I, oh! U-N-I!"

Nebraska girls found favor in this song:

"O sweet Nebraska Girl our dearest girl I know . . . When you are nigh, Old U-N-I, Seems just the right place, I see you dear face, For each night . . . of you I dream of the Scarlet and the Cream, So here is to you, A girl who's true blue, O here's to Nebraska Girl!"

The song used by the Ivy Chain on Ivy Day also had its roots in the "old" days.

Other schools, as well as fraternities, are not neglected. The book contains everything from "Go U Northwestern" to "Boola," dedicated to the trampling of Harvard.

Fraternity songs include many fraternities long since gone from the campus scene. Words and music proclaim the praises of Alpha Theta Chi, Lambda Chi Alpha, Phi Tau Epsilon and Alpha Sigma Phi, but Alpha Tau Omega, Phi Psi and Delta Tau Delta are listed, too.

But there's one song that's conspicuous by its absence. None other than "Dear Old Nebraska U!"

the DAILY NEBRASKAN

Vol. 34, No. 13 LINCOLN, NEBRASKA Wednesday, October 7, 1959

Social Column See Page 4

Panhell Sets Up Program

4-Day Session Starts Monday

A banquet will climax the annual Panhellenic Workshop next Wednesday evening.

It will be held in the Student Union Ballroom at 5:45 p.m. Featured speaker for the event is Mrs. Martha Graham, National Collegiate Vice President of Alpha Chi Omega.

Highlighting the banquet will be the presentation of the Panhellenic Scholarship trophy. The scholarship trophy is awarded to the sorority on campus maintaining the highest scholarship for the year. The cup was first presented by the Omaha Panhellenic group in 1916. The present trophy has been used since 1924.

Second Award

Also to be presented is the Elsie Ford Piper Award. This honor goes to the group making the most scholastic advancement during the year. Last year it was awarded on the basis of scholarship improvement and participation in activities.

Other activities of the four-day Panhellenic Workshop include an exchange luncheon program. Several girls from each house have the opportunity to lunch at another sorority house.

Besides the luncheon program, each day is dedicated to some particular phase of sorority life. Sunday is designated at church Sunday for all sorority women. Panhellenic night at the sorority houses will be the feature of Monday's program. Each active Panhellenic delegate will present a program explaining Panhellenic functions and purposes.

Training Sessions

The Panhellenic Training School groups will meet Tuesday evening. The group topics will deal with pledge training, scholarship, social life, activities, rushing, publicity and standards. The officer or chairman concerned with these topics will represent their sorority at these sessions.

The purpose of the four-day workshop is to discuss the usual problems which arise from sorority living, according to Miss Madeline Girard, Panhellenic adviser.

Seminar Is Oct. 13

"Plastic Theory of Structures," an engineering seminar, will be given next Tuesday instead of yesterday, as previously announced.

Yell Squad To Name Top Spirit Group

A traveling spirit trophy has been established to encourage more organized spirit in the student section at football games.

Organizations will be competing for the trophy at this week's home football game.

Corn Cobs and Tassels will sponsor a contest throughout the football season. The winning group will have its choice of location in the card section for next year's season.

The contest will begin this Saturday and continue for each home game.

Each house or organization occupying a section will be judged by the yell squads on originality, organization, cooperation and general support of the team.

6 Cases To Tribunal; Public Can Attend 2

By Doug McCartney

The Student Tribunal will hear six cases at their second meeting of the year today.

Two of the six hearings will be open to the public, said Dick Kelly, Tribunal Chairman.

Travels Don't Dull Loyalty

The following is the second in a series on campus leaders.

Still proudly singing "There is No Place Like Nebraska" is Judy Truell who during the past four years has traveled from and lived in as widely scattered places as Alaska and Massachusetts.



Miss Truell

President of Alpha Phi sorority, vice president of Tassels, member of the Student Tribunal, past president of NUCWA, and member of Phi Alpha Theta and Alpha Lambda Delta honoraries, Miss Truell is kept busy during her fourth and final year at the University.

She attributes credit to faculty and administrative members particularly as being the greatest influence on her University career.

"I think there are wonderful opportunities here and students should avail themselves of them," she said.

During the summer in Massachusetts she worked in a Yacht Club. "Each day we came in contact with many people from Ivy League schools of the East, but when all was said and done I was even prouder to sing 'There is no place like Nebraska.'"

Miss Truell said activities are fun and important but added she has always tried to remember that her primary reason for being here is to acquire an education.

The former Daily Nebraskan columnist hopes to go to Radcliffe College to study for a masters degree in ancient history.

Although her established home has been in Nebraska, she graduated from high school in Anchorage, Alaska.

Do Anything

The groups may make signs, wave pom poms or do anything to create spirit.

"However," said Fred Bliss, vice president of Corn Cobs, "we don't want to tear down anything we already have or destroy any feature we are now proud to have."

Don't Do

To clarify the judging, standards have been set up and any violations will result in disqualification of the organization and possible exclusion from the card section next year.

Violations disqualifying an organization will be:

- 1) not co-operating with the yell squad
- 2) use of musical instruments and whistles;
- 3) any disorderly conduct or act reflecting upon the organization or school
- 4) disrespectful use of noise makers, signs, etc., in such a way that it will distract from the game
- 5) Not co-operating with Gamma Lambda in the card section.

Best Seats

The trophy will be presented at the end of the game by the yell king to a representative of the winning group. The organization will keep the trophy until the next home game.

At the end of the football season the organization judged best for the four home games will retain the trophy until next year.

Counselors To Entertain Frosh Gals

Coed Counselors will present "As You Like It" for the last part of this semester's program at 7 p.m. Thursday in the Student Union Ballroom.

George Strunk will act as master of ceremonies for the variety show and Lanette Wiese will provide background music.

Participating in the half-hour show will be Mike Breiner singing folk songs, Karen Costin dancing, the Farm House quartet and the Tri Delt "Dancing Dummy" act.

Highlight of the evening will be the announcement of the outstanding coed counselor.

Coed Counselors are organized each semester to welcome and orient new women students to the campus.

Box of Cases

"We plan to have in the Daily Nebraskan (list) every week of the cases heard and recommendations of the Tribunal.

Tribunal secretary Ingrid Leder will be in charge of it."

"We are not a jury as such," he explained. "We merely make recommendations to the Dean of Student Affairs. We found last year that everyone (judged) was well satisfied. Out of 96 cases only six requested open hearings. It worked really well."

Kelly said that the present Tribunal had reviewed its by-laws and didn't make any changes.

Open to Criticism

"We're certainly open to criticism," he continued.

"But the primary thing is that people think we're out to hang somebody, but we all are members of the student body too."

Protect Individual

"I've talked to people around campus and they seem to think we're a bunch of power crazed office seekers trying to get in good with the administration.

"That is completely false. We're here to protect the individual as much as possible."

Kelly said that he didn't feel information about the individuals was good because "most of the people that appear before us haven't done anything seriously wrong."

Episcopal Chapel: First Religious Building To Go

The first religious building built on campus soon will be replaced.

The University Episcopal Chapel which has served students since 1890, a period of 69 years, will be dismantled in June of next year. A new \$175,000 chapel and student center will be constructed at the 13th and R site formerly occupied by Acacia fraternity and the renovated church.

Contributions Raised

It is hoped the new building will be ready for use by fall, 1960.

Funds for the new structure were raised by contributions from church people throughout the state.

The U-shaped building will face west and will be constructed around an open court. The court will function primarily as a beauty spot. A stone retaining wall will run across the front of the court.

Entrance to the student center section of the building is gained through the court.

Three Sections

The student center will consist of three sections — a lounge containing a fireplace, a dining hall of approximately 250 capacity and a kitchen. The basement area will be used for recreation and expansion purposes.

The section of the building connecting the student center and the church will be occupied by various offices and study rooms. Choir rooms and recreation areas will be located in the basement of this section.

The chapel seating capacity is 200. A recessed choir loft is located in the wall above the pulpit. Rev. Gilbert Armstrong, chaplain, said the design of the chapel can best be described as simple and direct.

Attention to Altar

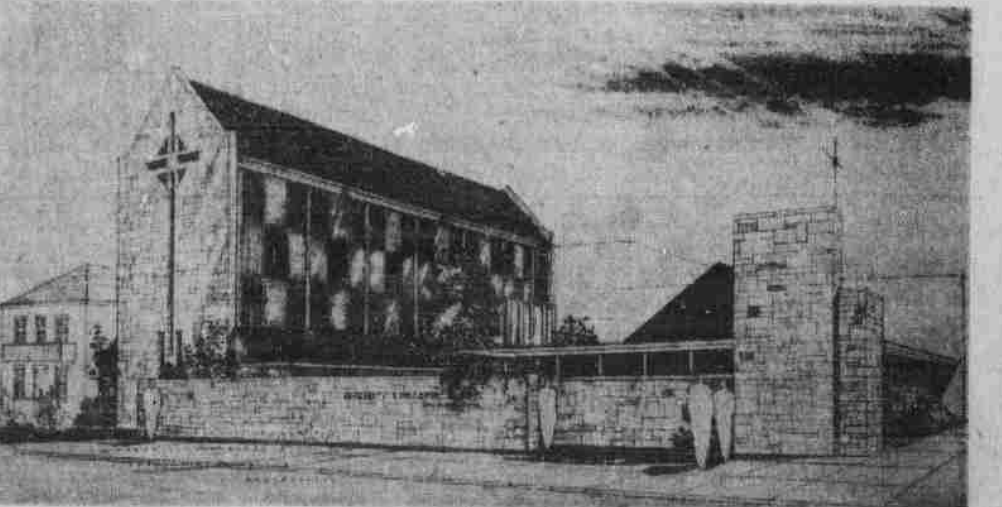
He said all attention is drawn to the altar because no feature between the entrance and altar area detracts from the simplicity and directness of the altar design.

The walls of the chapel will be mosaic designs of alternating various colored panels and glass squares. A unique feature of the chapel will be a colored cross-shaped window

extending the complete length of the west wall. According to Rev. Armstrong, it was designed especially for this chapel.

The architecture of the building was described by Rev. Armstrong as Gothic "to preserve the old and to introduce the new."

The style is in keeping with one purpose of the church which Rev. Armstrong cited as an attempt to combine the old with "on-going" learning.



CHAPEL SKETCH—Above is an artist's conception of the new University Episcopal Chapel which will be located at the corner of 13th and R Sts. The U-shaped building, which is expected to be completed in the fall of 1960, will be constructed around an open court.