

On the Social Side

Studies Interrupted by Pins, Rings

By Mary Anderson
There are only two weeks of school remaining and despite the rush to get last minute term papers, themes, and studies done, there was still time for eight pinnings and two engagements.

The Alpha Gamma Sigma Sweetheart was revealed at their Rose Formal as Barbara Vahle. Barbara is a Kappa Delta Sophomore.

Pinnings

Ellie Kessler, a Delta Gamma sophomore in Teachers from Hastings, to Bill Wilson, a Beta Theta Pi junior in Business Administration from Lincoln.

Kay Schmidtmann, a Delta Gamma freshman in Jay Rester, a Phi Kappa Psi junior in Business Administration from Omaha.

Jan Mastos, an Alpha Phi sophomore in Arts and Science from Omaha, to "Punch" Douglas, a Beta Theta Pi from Omaha.

Frances Spoeneman, a Sigma Kappa sophomore in

Business Administration from Ogallala, to Don Siffring, a Farmhouse senior in Agriculture from Ogallala.

Nancy Morgan, a Delta Delta Delta freshman in Home Ec. from Lincoln, to Al Haugner, a Delta Upsilon junior in Business Administration from Port Huron, Mich.

Marilyn Huddleston, an Alpha Phi freshman in Arts and Science from Omaha, to Dennis Kendall, a Sigma Alpha Epsilon junior in Business Administration from Omaha.

Linda Arnold from Omaha, to Bill Anderson, a Sigma Nu junior in Engineering from Omaha.

Jeannine Mann, a Sigma Kappa sophomore in Agriculture from Chappell, to Charles Johnson, a Theta Chi junior in Teachers from Lincoln.

Engagements

Gail Parker, a Delta Gamma junior in Teachers from Hebron, to Bill Elfeldt, a Sig-

ma Chi senior in Arts and Science from Sutherland.

Carolyn Wilcox, a Fedde Hall sophomore in Home Ec. from North Bend, to Jim Chrony, a Burr Hall freshman in Agriculture from Linwood.

Gail Lynn Minnick, Alpha Chi Omega alum to Vernon Feye, a member of Farmhouse from Creston.

Experimental Plays Offered

Two new one-act plays will be presented tonight and Thursday by the experimental theatre starting at 8 p.m. in Temple 201.

"The Drink," a serious play set in Jerusalem after the Crucifixion, was written by Dick Marrs, a graduate student. It will be given as a staged reading.

"The Rehearsal" is a modern melodrama written by a student at the University of Iowa. It will be given traditional theatre performance with Zeff Bernstein as director, Grover Kautz as the actor and Ann Prentice as the actress.

Directing "The Drink" is Ida Mae Ryan. The cast includes Leo Fehlhafer, an in-keeper; Stan Rice, John; Ted Rehmeier, Peter; Charles Piper, a soldier and Jerry Sellentin as Peremon and an officer.

Y Sponsors Show

"Compulsion," playing at the Lincoln Theatre this week, is being sponsored by the University YWCA.

The Y will receive a percentage of the admission fee for each card presented at the box office. These cards have been distributed in all campus dorms and houses and are available from YWCA members.

"Compulsion" is a study in youthful behavior.



Union Color Set

KAREN PETERSON (LEFT) AND Judy Sieler, members of the Union Board, beam over the new color TV set donated to the Union by Alpha Gamma Sigma. The AGS's won the set in a cigarette wrapper collecting contest.

Detroit Students Warned: Paper Staff Carnivorous

Students at the University of Detroit evidently keep a wary eye on their paper, "The Varsity News." The "News" ran this announcement after its letter box was stolen: "Will the person or persons who took the 'Letters to the Editor' box from the Union please return it."

Students can hardly bring letters to the VN office because the personnel there eat strangers." The "Kansas State Daily" reports this sure thing for logic finals

It seems that a two-hour logic exam of four years ago consisted of one question: "Why?"

After thinking deeply for 10 minutes, one student wrote: "Because" on his paper and left.

He got an A. Letters to the Editor: "The Battalion" of Texas A and M college had this question in a cartoon: "How can you emphasize a point in a letter to the editor without using a dirty word?"

AD LIBS

by Larry Hurb



"Does the horn work all right, Harry?"



JUST YOUR TYPE

That's why more people buy Smith-Corona Portables than any other Portable Typewriter!

Campus beauty! Letter-perfect with figures to match! And won't your fellow-students envy you! Cause with your Smith-Corona Portable Typewriter, you'll be able to make better grades... studies will be easier... assignments go faster, leaving you more time for fun.

So make a date now to see your local Smith-Corona Dealer. A new Smith-Corona Portable can be yours for as little as five dollars down... up to 24 months to pay. And be sure to have your dealer show you the newest of Smith-Coronas... the world's first Electric Portable Typewriter!

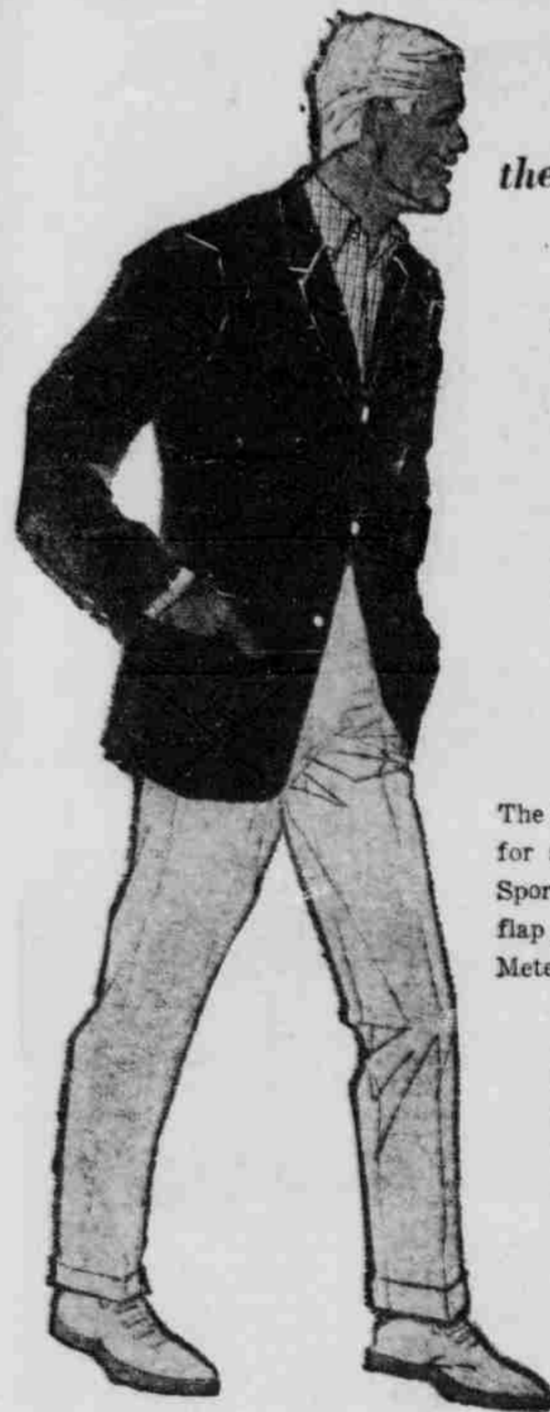
All the features the expert demands... all the conveniences the beginner requires! Exclusive Page Gaps • Convenient Quickset Margins • Fast, responsive Touch • Full 88-character keyboard.



Smith-Corona
More people buy Smith-Corona Portables than any other portable in America!

Mr. Miller's

SHOP THURSDAY 10 to 8:30



the newest fabric in the fashion galaxy

METEOR

WASH 'N' WEAR IRIDESCENT COTTON

to be found in this exciting sportswear collection by MCGREGOR

The sharpest summer outfit you will find... for style and comfort... The Meteor Sport Coat three-button model with flap pockets, 22.95... and the Meteor Slack, 8.95.

Designed expressly for golfing... the Meteor Golf Slacks (or Shorts) feature adjustable self belt, two bellows pockets with Velcro (no button) flaps, handy tee loops plus convenient towel ring. \$10
Shorts, 7.95



Reserved exclusively on this planet for McGregor, Meteor is light, cool, wash and wear, and amazingly wrinkle resistant for cotton. Expertly woven in two colors for a soft, iridescent look... in colors that are out of this world.

Smart for leisure wear during the long Nebraska summer or at your favorite vacation resort... the Meteor Cardigan, low cut four button styling with tri-stripe trim and two inset pockets, \$10... and the Meteor Islander Shorts, with pleatless front and adjustable side buckles, 6.95.

MEN'S STORE, FIRST FLOOR

Miller & Paine
Lincoln