

Magie of Engineering Unveils Future

Two-Fold Purpose Fulfilled By E-Week Display Action

Vol. 33, No. 99

The Daily Nebraskan

Friday, April 24, 1959

Leder, Ellerbusch, Frazier Complete Tribunal Bench

Ingrid Leder, Rod Ellerbusch and Larry Frazier were selected by Student Council Wednesday to complete the 1959-60 Student Tribunal bench.

Ellerbusch and Miss Leder were named junior judges and Frazier is the Law College representative.

The senior members of the Tribunal picked last week by the Council are Dick Kelly,

Bob Paine, Judy Truell and Don Hall.

The judges were chosen in a two-hour Council interview session.

Other candidates interviewed for the positions were Harlan Hubka for the Law College seat and Dave McConahay for the position of junior judge.

McConahay was nominated from the Council floor. The

Council ruled last week that nominations could be made from the floor subject to approval by a majority vote of the Council.

Another candidate nominated by the nominating committee, Mary Lou Reese, was unable to attend the interview session because of her confinement in Student Health.

Judges are chosen for a one-year term of office which begins with the fall semester of each year. This would make September, 1959, the first month in office for the new judges.

Miss Leder is in Arts and Sciences. She is a member of Builders Board and Alpha Xi Delta.

Ellerbusch, a Sigma Nu, is in Business Administration, a member of Young Republicans and of the Lutheran Student Association.

Frazier attended McCook

College before coming to the University. He was a class officer and debater. He is a sophomore in the College of Law.

Explaining the engineering profession and the University's own college and programs is the two-fold purpose of E-Week, as expressed by the Engineering College Dean, Merk Hobson.

"Our students felt the people of the state should know a little more about engineering," Dean Hobson said. "We want to show the public something of the University, tell them the engineers' interests and what they're doing."

Early Planning
Planning the annual affair usually starts at the beginning of second semester, with actual work in the architectural

division beginning two weeks ago. Projects may be under consideration for much longer than this however.

Architecture Hall opens the tour of Open House. A huge mobile hangs above the stairs, as an operatic record, moderators' voices and a strumming guitar greet the visitors.

Here, art is combined with mechanics. An interior display adorns one turn in the path, with a scale-model round high school and several other scale buildings plotted along another wall.

Blueprints
Blueprints and plans of future buildings are located on one wall and modern paintings fill another room.

A white arrow leads you to the next building containing the electrical engineering displays. KUON-TV has set up a closed circuit TV station which shows visitors who and what is upstairs.

Games to simplify complicated displays invite spectator participation. A recording of the "Hallelujah Chorus" makes stereophonic high fidelity come to life.

Navy Display
The Navy display brings reality closer with its U.S. Navy air-guided missile and Ram Jet.

An electronic device counts noses as visitors file out of this building and walk to the

mechanical engineering displays.

Rows and rows of machines, rolling, spinning and grinding, whirl out aluminum bowls and other implements. A dirt floor foundry shows how engineers cast iron models for the machine shop.

Magazines
Blueprint salesmen sell magazines as you enter and leave the civil engineering building. A model of an earthen dam has been constructed, and bridges and other buildings typify other civil engineering students' work.

A smell of sulfur and other chemicals fills the air of the chemical engineering building. Practical visitors can learn to make their own plastic and rayon from these displays.

Moderators in this building estimated that approximately 100 hours had been spent on each display.

The agricultural engineers have set their display up outside, featured by a remote control tractor.

Completing the tour is the engineering mechanics department located in Bancroft Hall. There concrete samples are tested, and electronics' role in detecting strains is shown.

E-Week will be concluded with a banquet at 8:30 to night.

Exam Change Wins Faculty OK

The Faculty Senate calendar committee will take a definite stand May 14 in favor of the Student Council's final exam proposal.

The Council has proposed changing the schedule to provide one day, Monday, free

for study at the beginning of the final exam period.

Chuck Huston, chairman of the Council final exams committee, reported the faculty committee's stand.

The change as proposed by the faculty committee and Council would take place in 1960-61.

Council President Dwaine Rogge will present Council's stand to the faculty Senate if possible, Huston said.

Supporting evidence received by the Council final exams committee in the form of letters from students, faculty members and organizations will be presented to the faculty senate.

Also presented will be letters from Council President Rogge and Huston.

Any students desiring to write letters either for or against the change should address them to Chuck Huston, Final Exams Committee, Room 305, Union.

SDX Picks Kraus As President

Carroll Kraus has been elected president of Sigma Delta Chi, professional journalistic fraternity.

Other officers were Dick Basoco, vice president, Don Eversoll, secretary, and Jerry Grossart, treasurer.

The new officers will be installed tonight at an initiation banquet at the Cornhusker Hotel. Fred Herrington, state tax commissioner, will be the speaker.



Kraus

Death of a Tree—NU Blue Spruce To Be Removed

The University's Christmas tree is ailing.

The 20-foot tall Silver Colorado Blue Spruce near the Administration Building, which was to become the University's traditional Christmas tree, survived only one yule season.

The tree is dying and will be removed within the next few weeks, according to John Harris of the University grounds department.

Donated by Dr. James Sellers, retired history professor, the tree was moved from Dr. Sellers' home last April.

Harris said the tree could not grow because the ground was packed too hard after Ellen Smith Hall was razed and the grounds were landscaped.

Another tree is expected to be planted in the same area before next Christmas, however.

Fine Arts Festival On Campus

Weekend Session To Attract 950

Some 950 Nebraska high school students will be on campus today and tomorrow for the University's Fine Arts Festival.

Registration opened this morning in the Union, for the speech and art students.

Music Students
The music students will not arrive until tomorrow.

A new feature in the speech division this year will be the presentation of two trophies to the schools in Class A and in Class B winning the sweepstakes in individual speech events.

The speech awards will be made in Howell Memorial Theater at 3 p.m. tomorrow.

Art Exhibit
Art works by the students will be displayed in Gallery B of Morrill Hall from 8 a.m. to 5 p.m. today and from 8 a.m. to noon tomorrow.

University art faculty members will conduct workshops for the art students.

Each music student will receive individual instruction from a music faculty member.

Career Film
The students will also be shown a career day film and have a discussion on "Life at Nebraska."

Dean A. C. Breckenridge will be the main speaker at the Festival's noon luncheon in the Union Ballroom tomorrow.

Dr. LeRoy Laase, chairman of the speech department, will preside at the luncheon.

The 1958 Typical All-State Girl, Ellen Nore of Genoa, will speak on "All-State."

Spring Day Deadlines Announced

Noon today is the deadline for submitting names of contestants in the Spring Day competition.

Entry blanks should be turned in to the ballot box outside the Student Council Office.

A Spring Day house chairman's meeting will be held at 4 p.m. Monday, Union 315 to discuss final plans for the parade and competition.

Representatives unable to attend should send an alternate as important information will be given.

Houses not submitting their entries by the noon deadline will be ineligible to participate in Spring Day.

Two SC Members To Attend Luncheon

Dwaine Rogge and Gary Frenzel will be quizzed about the Student Council election at a Rag luncheon today.

The luncheon will be held at 12 noon in Parlor X of the Union.

Regal Nebraskan



RELAY ROYALTY Mary Ann Harris, University coed, reigns over the Golden Anniversary Drake Relays at Des Moines today and tomorrow. A sophomore majoring in speech therapy, "Skip" is rush chairman of Pi Beta Phi. Her official crowning will take place tomorrow followed by her presentation of awards to Saturday's triumphant athletes. She is the first Nebraskan to be queen of the relays, a competition involving girls from all over the U.S.

Theta Nu Takes Eleven Members

Eleven pre-medical students were recently named members of Theta Nu, honorary pre-medical fraternity.

They include Dave Sell, Kenneth Barjenbruch, Frank Wells, Carl White, Vernon Garwood, Jerold Heelan, Keith Shuey, Dale Nitzel, Dave McConahay, Harrison Gill and Ronald Gephart.

Council College Slate Out

The official list of eligible candidates for Student Council college representatives has been released by Don Schick, chairman of the Council elections committee.

The candidates and their colleges are:

Agriculture:
Two representatives, at least one must be a woman.
Mary Anne Weber, Elizabeth (Betty) Condon, Rita Mullet, Donald Epp, Ronald Kahle, Larry Ott.

Arts & Sciences:
Three representatives, at least one must be a woman.
Diane Tinan, Ann Muehlbeier, Sandie (Kay) Johnson, Katherine (Katy) Griffith, Joan Graf, Karen Dempsey, Michael Flannigan, Thomas Frolik, Kenneth Tempero.

Business Administration:
Two representatives.
Barbara Barker, Jacqueline Collins, Lowell Hansen, Richard Newman, Larry Kilstrup, Darrell Frenzel.

Engineering:
Three representatives.
Roy Cook, William Paxton, Roland Rader, Richard Valdez, Dennis Nelson, Winston Wade, Don Gable, William Boggan.

Pharmacy & Dentistry:
One representative.
Duane Delozer, Robert Theede.

Teachers:
Three representatives, at least one woman and one man.

Ann Walker, Bonnie Spiegel, Elinor Yost, Carole Woodling, Pennie Sandritter, Carol Vermaas, Judith Wolcott, Barbara Miles, Kay McCormick, Linda Lonsbrough, Carolyn

Lee, Maribeth Larson, Patricia Johnson, Shirley Chab, Margaret Aikens, Roy Neil, David Myers.

Law:
One representative.

Niel Stillinger, James Fournier.

Student Council elections are May 4. Students may vote in Love Library, Union, or Ag Union.

'Look Over Candidates,' Council Head Advises

On Monday, May 4, the day for Student Council elections, how many of you will know who the candidates are from your college? The answer in past years has been "very few."

This is a serious situation. To help remedy this, each student should do four things:

—One, take time to read the Daily Nebraskan to find out who the candidates are in his college;
—Two, find out about the candidates' abilities;
—Three, make a choice, and
—Four, take about two minutes to vote!

After you have found who the candidates are from your college or organization, you also have an obligation to determine their qualifications. This can be accomplished by asking your friends about them, asking other people in your college or organization, and by watching the bulletin boards for posters.

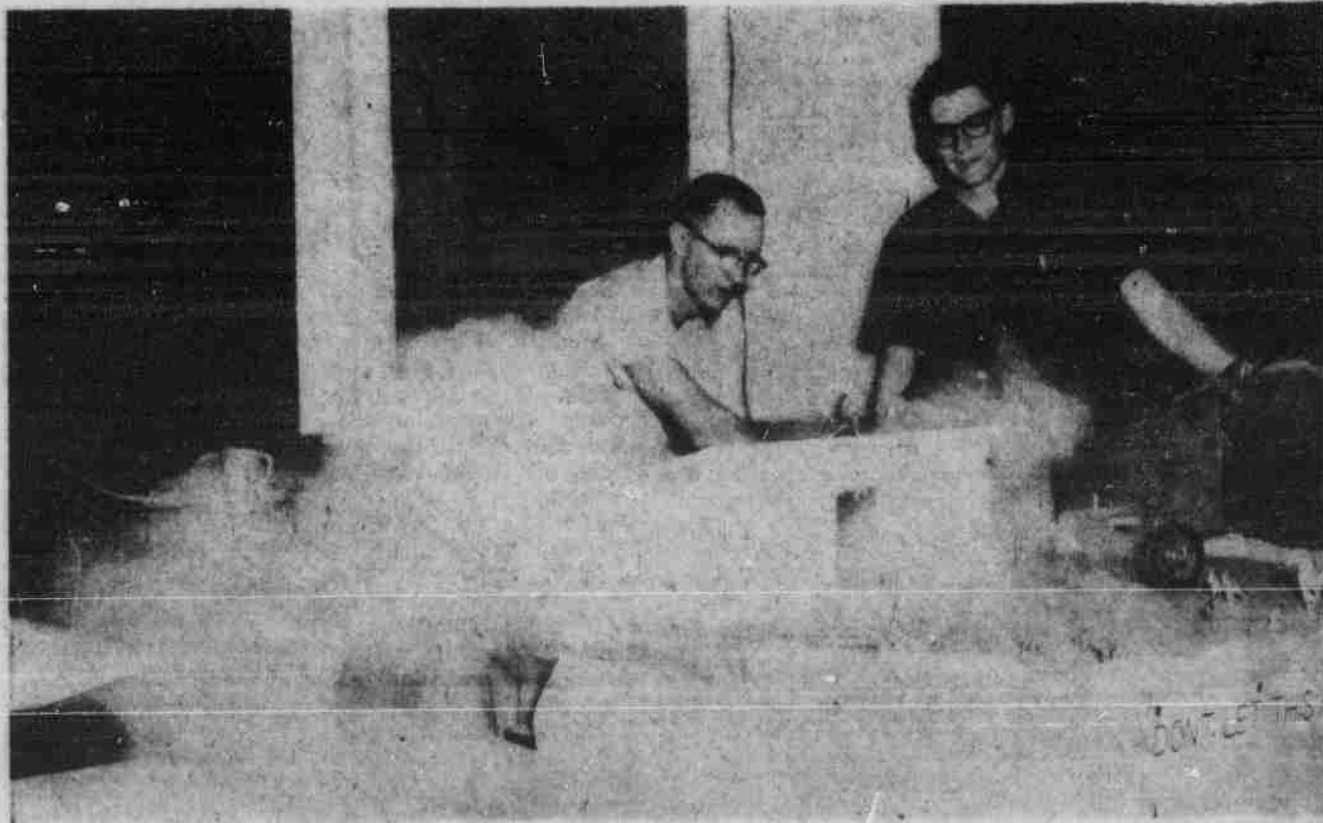
Some of the criteria to use in determining a person's Student Council potential could be how he has performed in other positions, how he thinks, (that is, does he think for himself and is he able to organize his thoughts) and is he or will he be properly acquainted with the members and problems of the group he is to represent so that he can accurately present the position of his organization or college.

Your interest in the candidates' abilities is important because the Student Council has the power to regulate and coordinate student activities and to act as a liaison between the Administration and Faculty and the students. The use of these powers depends upon one thing, the capabilities of the Student Council members and officers.

In turn these members depend upon you for election. Having a good Student Council next year depends almost entirely upon you—You cast the votes May 4.

Dwaine Rogge
Student Council President

Poof! ME's Cause Dust Explosion



A DUST EXPLOSION, one of industry's greatest hazards, is shown here in small scale in the mechanical engineering department's E-Week display. Similar explosions are

common in coal mines, grain mills, etc., when a spark touches suspended areas of coal or grain dust, Gary Koopman (right) told viewers of the display.