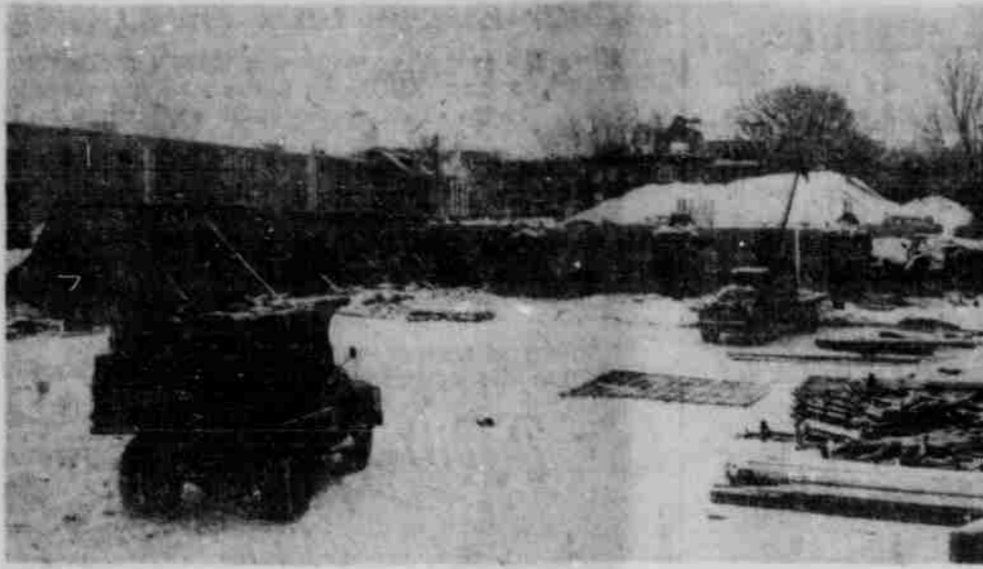




In go the shovels . . .



In go the trucks . . .



In go the fixtures . . .

Speech-Hearing Group Installation Set Today

Sigma Alpha Eta Forms; Chapter Has 35 Members

Installation of Sigma Alpha Eta, professional speech and hearing therapy fraternity, will take place at 7:30 p.m. today in Parlor Z of the Union.

Twenty-eight key members will be initiated into the organization during the installation ceremonies, according to

Charles Falls, president of the group.

Pennsylvania Beginning
The fraternity, only speech and hearing organization in the country, had its beginning at Pennsylvania State University in 1947. The University chapter will be the 50th installed.

Officers of the organization, in addition to Falls, are Sharon Kokes, vice-president; Kay Nielson, secretary; Sue Goldhammer, corresponding secretary; and Kay McCrory, treasurer.

35 Members
Harlan Adams, assistant professor of speech, is the faculty advisor of SA.

The chapter membership totals 35 persons, Falls noted. For the past year and a half, the campus organization has undergone a probationary period. Final approval of the chapter's constitution came from the national headquarters Nov. 18. Adams will conduct the installation ceremonies.

Initiates of the chapter into key membership are: Kay McCrory, Liz Robinson, Martha Crocker, Sharon Kikes, Linda Fahrlander, Kay Nielson, Judy Lindgren, Dennis Holt, Sue Goldhammer, Charles Falls, Edythe Morrow, Shirley Deines, Jean Puppe, Jill Weyand, Zella Long, Sharon Vahl; Lee Ransten, Dick Shugrue, Jack Lamphere, Myrna Hunter, Mary Jo McCune, Mary Lynn Anderson, Phil Melmer, Barbara Holmes, Jackie Hoyt, Charlene Ferguson, Carl Halker and Dixie Stephens.

Foreign Students Must File at PO

All foreign students are required by the Department of Justice, Bureau of Immigration and Naturalization, to file their present whereabouts.

During this month, they must fill out Form I-53 at the United States Post Office Building here in Lincoln.

NEBRASKAN CLASSIFIEDS

Wanted: Male student to share furnished home. Call 2-8280 5-7 P.M.

Driving Call. after finals. Riders wanted. Write: 6443 Aylesworth, City.

EUROPE
Dublin to the Iron Curtain; Africa to Sweden. You're accompanied—not herded around. College age only. Also short trips. EUROPE SUMMER TOURS 255 Sequoia (Box C), Pasadena, Cal.

By Sondra Whalen
April 1 will be the opening date of the Union's new cafeteria.

"The cafeteria will be the first part of the new Union to be opened," Duane Lake, managing director of the Union, said. "The change over to the new part will be made during Easter vacation."

The Cafeteria will be located where the old part of the Union lounge was located, extending out to the glass windows at the front of the new addition.

Color
The floor will be done in a vinyl cork pattern with turquoise walls and match-

the entire first floor is this summer.

Recreation
"The thing we're so proud of is that we'll be able to offer so many recreational activities that aren't possible in the limited space we have now," Lake said. "Students will soon be able to do anything from checking their lunch to taking a shower in the Union."

The actual structure of the building is 70 per cent finished, Lake said, with only the front entrance and terraces left to be done. All plastering will be completed within three weeks.

Mechanical progress, which includes the installa-

party rooms and the little theater.

Two ballrooms will occupy the front of the new Union, with glass walls reaching from floor to ceiling along one side. A romantic atmosphere will be provided for dinner dances and parties by the terraces which open off the ballrooms.

The area can actually be divided into three separate rooms by folding doors.

Plush
"There is nothing like it anywhere in Lincoln," Lake said. "The whole thing will be very plush and up to date, with even a reception lounge. People



And soon the finished product

ing turquoise upholstery on the chairs and benches. The table tops will be done in a creamy brown Formica.

"The cafeteria will seat 192 and the new Crib will seat 312 when we use the nightclub arrangement," Lake said.

He added that the Crib won't be opened until next fall although a "dry run" might be possible in May.

The formal opening will be next fall with all facilities ready for use.

The completion date for

tion of built-in equipment, plumbing and ventilation, is coming along "on schedule" with about 6 per cent of it finished. Seventy-five per cent of the electrical work is finished.

Painting
"Painting of the old building is being done right now," Lake said, "although the painting of the new part will be one of the last things finished."

He added that some other facilities might be ready for a spring opening, such as the billiards, table tennis, card refreshment and

won't need to sit around and wait while food is being cleared away to dance."

Patio furniture will adorn the terraces completely surrounding the new addition.

"The Union will be completely turned around," Lake said. "The front will face S street with a drive in entrance."

Students will be able to dance in parts of the new Crib.

A jump line, where students may step in and order what they want and leave, and a coffee bar will

provide quicker service. Students wanting a sandwich may call in their orders at the tables and booths, then pick it up when their number is called.

The main lounge will have all glass walls along one side while the Crib will have alternating glass and cork walls, with all glass after 7 feet.

Next to the main lounge will be a TV lounge, with three music rooms following that. One music room will be wired for stereophonic sound.

"We'll have an attendant operating it," Lake said. "Students may simply go up to his window and request songs."

Hi-Fi Sets
The other rooms will have hi-fi sets where students may play their own records. A new Book-Nook will be next to this.

The ground floor will boast many recreational activities, among them a 10 lane bowling alley and several multiple service party rooms. A little auditorium will have a sloped floor with permanent seating installed.

A barber shop and computers luncheon will also be located in the basement. Locker rooms for men and women will be provided so that Lincoln students may freshen up or rest before classes.

Air-Conditioned
"The entire Union will be air-conditioned," Lake said. "We'll have our own plant which we can turn on at any time."

The third floor will be devoted primarily to activities. The Student Union as an activity will then be able to service all other groups, doing things such as issuing supplies.

"We'll have an area to make signs, mimeograph or type," Lake said. "They can even eat up there because we'll provide vending machines."

Ladies and men's rooms will also be provided on the third floor as well as a file room for all activities, typewriters and lockers. Some of the rooms will be equipped with kitchenettes so that groups may have refreshments.

The cost of the two-story project is \$1,300,000.

Civil Service Posts Available In Accounting

Applications to fill Accounting Clerk and Supervisory Accounting Clerk positions in Iowa, Kansas, Minnesota, Nebraska, Missouri, North Dakota and South Dakota are now being taken in the Ninth Civil Service Region.

Eligible applicants may apply for positions in: Accounts Maintenance; Voucher Examining; Cash Accounting; and Time, Leave and Payroll. Beginning salaries range from \$313 to \$374.

Additional information and application forms may be obtained by contacting the Examiner in Charge, Board of U.S. Civil Service Examiners, U.S. Post Office, Lincoln, U.S. Civil Service Region, New Federal Building, St. Louis, Mo.

CHRISTIANO'S PIZZARIA
8 varieties of PIZZA
3 Sizes—\$2.00, 1.50, 75c
Dining Room Service 5 P.M.
Now—2 Stores
Store #1 889 No. 27 Ph. 2-4859
Open every day except Tuesday
Store #2 4811 Holdrege Ph. 8-2304
Open every day except Monday

EUROPE
Dublin to the Iron Curtain; Africa to Sweden. You're accompanied—not herded around. College age only. Also short trips. EUROPE SUMMER TOURS 255 Sequoia (Box C), Pasadena, Cal.

BOOKS

For Best Prices in Selling and Lowest Prices when Buying

—GO TO—
PEDEN'S

"Students' Busy Corner"

1245 R

2-3474

"What careers are available?"

A DOOR IS OPEN AT ALLIED CHEMICAL . . .

AND THIS MAN CAN GIVE YOU THE FACTS

You'll want to note the date below. Our interviewer will be on your campus then, ready to answer your questions about a career in the chemical industry . . . and to point out the advantages of pursuing that career at Allied.

You'll find it worth your while to get the facts about a company that has twelve research laboratories and development centers, over one hundred plants, and a nationwide network of sales offices. It's worth learning all you can about a company that makes over three thousand different products—chemicals, plastics, fibers—with new ones coming along every year.

Come prepared to ask our interviewer what you want to know: What kinds of jobs? Which products? What opportunities for advancement? Which location?

FOR THE CAREER FACTS YOU NEED

SIGN UP NOW FOR AN INTERVIEW!

BASIC TO AMERICA'S PROGRESS

Allied Chemical

21 BROADWAY, NEW YORK 6, N. Y.

DIVISIONS: BARRETT • GENERAL CHEMICAL • NATIONAL ANILINE • NITROGEN • PLASTICS AND COAL CHEMICALS • SEMET-SOLVAY • SOLVAY PROCESS • INTERNATIONAL

ALLIED CHEMICAL CAMPUS INTERVIEWS TUES., FEB. 3

A future for: Chemists, Chemistry Majors, Engineers (Chemical, Mechanical, Electrical)