

Versatility Plus

Pills, Plants Produced In Lyman Hall

In spite of sawdust in the corners and some missing tabletops, classes were held for the first time Monday in Lyman Hall, new home of the College of Pharmacy and the Department of Bacteriology.

A strike by a manufacturing firm has delayed delivery of several items like the heavy tabletops for use in labs and storage rooms, Dr. LaVerne Small, chairman of the Pharmaceutical Chemistry department, explained.

Some Not Ready
Some of the labs will not

be in session until equipment is unpacked or installed.

Total cost of Lyman Hall is approximately \$950,000. Of this amount, \$200,000 was spent on new equipment for the building.

Greenhouse on Roof
Most conspicuous of new equipment is the pharmaceutical greenhouse which can be seen on top of the hall. Inside the all-glass room, drug producing plants are grown, the tendrils of some already winding upwards toward the ceiling.

Entering Lyman Hall from the south door, a visitor may glimpse the study area for pharmacy students. In addition to tables and bookshelves, row upon row of manufacturer's products line glass shelves. Here the pharmacy student may familiarize himself with commercially produced pills and remedies for relief of pain.

In the pharmacy labs, heavy stone chemical-resistant sinks are provided. Store-rooms are placed so they are accessible from labs on either side of the storerooms.

Pill Machine
A pill-manufacturing machine is one of the pieces of new equipment used by pharmacy students. Medicine put in the machine in powder form emerges as a tablet.

For the faculty, a separate research room is available.

The department of Bacteriology occupies third floor.

Walk-in incubators and cold storage units are located close to the laboratories, with doors on each end of the storage unit.

Equipment for working with radioactive materials will be installed.

Accommodations for experimental animals include an isolation room for diseased

animals and equipment for sterilizing the cages.

A centrifuge, a machine capable of automatically separating micro-organisms or other particles from a solution, has been purchased for the bacteriology department.

A separate laboratory is provided for working with pathogenic or disease-producing micro-organisms.

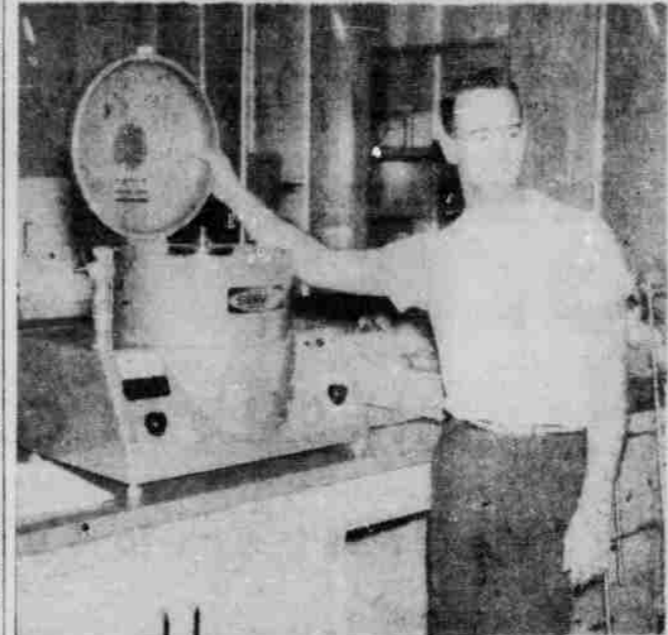
Laboratories for faculty research include facilities for working with viruses and other special problems.

A still, for distilling water, is located on the fourth floor area, near the green house. Here, also, is an incinerator.

Study carrels are provided for graduate students in pharmacy and bacteriology.

Window space is plentiful. The labs and classrooms have a spacious airy look.

Huge fans at the top of the building draw the stale air from the rooms and halls.



A CENTRIFUGE capable of separating particles from a solution is one of the new purchases of the bacteriology department for Lyman Hall.

Dr. Lines To Lecture At Cotner

Dr. William Lines, professor of New Testament at Central Lutheran Seminary, will be a guest lecturer at Cotner School of Religion this fall term.

A native of Erlangen, Germany, Dr. Lines was drafted into the German army in 1944 and taken prisoner by the allies in 1945. Upon release from capture, he returned to Erlanger University.

At Cotner, he will teach a two-hour credit course on "The Four Gospels" from 7 to 9 p.m. on Thursdays.

Other lecturers at the school of religion include: the Rev. Rex Knowles, director of the Presbyterian Student Foundation; the Revs. Robert Gordon and Darrell Patton, associate director of the Methodist Student Foundation; the Rev. Keith Stephenson, University pastor for the Baptist and Disciples of Christ students; and full-time staff members, the Rev. R. J. Peterson Jr. and Dr. Gustave Ferre.



Dr. Lines did doctoral work at Boston University, where he has also taught. In addition, he has been an instructor at the department of Christianity and philosophy at Gustavus Adolphus College.

Patronize The Nebraskan Advertisers

Best Pizza in Town . . .

CHRISTIANO'S PIZZARIA

3 varieties of PIZZA
3 Sizes—\$2.00, 1.50, 75c
Dining Room Service 5 P.M.
—2 Stores—
Store #1 889 No. 27 Ph. 2-4859
Open every day except Tues.
4811 Holdrege Store #2 Ph. 3-2304
Open every day except Mon.

HOLLYWOOD BOWL

Open Bowling Saturday & Sunday
24 Lanes—Automatic Pinsetters
Restaurant . . . Barber Shop
920 N. 48th—PHONE 6-1911

It's a Campus Favorite

EVANS

CLEANING & LAUNDRY

Two convenient locations for

10% CASH & CARRY

On Campus Northwest Corner in Basement of Selleck Quadrangle
Off Campus Across the Street from the Temple Bldg. 333 North 12th

Accredited Courses in Religion at Cotner

Fall Semester Schedule 1958-59

| No. | COURSE | CREDIT | TIME | DAYS | INSTRUCTOR |
|------|-------------------------------------|--------|-------|----------|-------------------------|
| 10 | New Testament Life and Literature | 2 | 10:00 | W. F. | Stephenson |
| *10 | New Testament Life and Literature | 2 | 2-4 | M. | Staff |
| 12 | Old Testament Life and Literature | 3 | 9:00 | M. W. F. | Peterson |
| 30 | Introduction to Christian Faith | 2 | 9:00 | T. Th. | Ferre' |
| 73 | Growth of the Church | 2 | 11:00 | W. F. | Gordon |
| 120 | Bible and Dead Sea Scrolls | 2 | 1:00 | W. F. | Peterson |
| 121 | The Four Gospels | 2 | 7-9 | Th. | Linn |
| *122 | Life and Teaching of Jesus | 2 | 1-3 | Th. | Knowles |
| 125 | Life and Thought of Paul | 2 | 10:00 | T. Th. | Ferre' |
| 147 | Religion in Contemporary Literature | 2 | 2-4 | T. | Knowles, Patton, Gordon |
| 150 | Work of the Minister | 1 | 1:00 | Th. | Staff |
| 163 | Principles of Christian Education | 2 | 7-9 | Th. | Peterson |
| 185 | World's Religions | 2 | 11:00 | T. Th. | Patton |
| 223 | Parables of Jesus | 2 | 2-4 | W. | Peterson |

* At 2513 Holdrege

The Faculty for the First Semester 1958-59

| | |
|---|--|
| GUSTAVE A. FERRE', A.B., Boston University; B.D., Andover Newton; Ph.D., Vanderbilt; Graduate study, Yale University. | DARRELL P. PATTON, A.B., Baker; B.D., Southern Methodist; Graduate study, Texas Christian University of Nebraska. |
| ROBERT E. GORDON, A.B., Emory and Henry College; B.D., Southern Methodist University. | RALEIGH J. PETERSON, Jr., A.B., Phillips; B.D., Phillips; Graduate work, University of Nebraska, University of Denver. All course work completed for Th.D., Illi School of Theology. |
| REX M. KNOWLES, A.B., Wesleyan, Conn.; B.D., Yale; M.A., University of Nebraska; D.D., Hastings; Ph.D., University of Nebraska. | KEITH DWAIN STEPHENSON, A.B., University of Nebraska; B.D., Yale University. All course work completed for S.T.M., Yale University. |
| WILHELM C. LINSSE, Baccalaureate Degree, Erlangen University, Germany; S.T.M., Boston University; Ph.D., Boston University. | |

The COTNER SCHOOL of RELIGION is the institution accepted by the University of Nebraska for offering accredited courses in religion to students. During registration enroll for the course in religion by registering at Cotner School of Religion, 1238 "R" Street. All credit courses are taught at Cotner School of Religion. At the close of the semester, your grade and credit hours will be reported to the registrar of the University. All course work is conducted in accord with the academic standards of the University.

TUITION & FEES—There is no tuition charge made for credit courses in Cotner. A \$2.00 registration fee is charged which covers the cost of the transcript of credits to the University. A \$6.00 fee is charged for auditing courses.

Orientations
The first in a series of weekly orientation meetings for freshmen in the College of Arts and Sciences will be held Thursday at 4 p.m. in 108 Burnett Hall.

Walter E. Millizer, dean of the College of Arts and Sciences, will conduct the meetings which are designed to orient students to University work.

University Amateur Radio Club Meeting:
7:30 P.M. Room B-8
M & N Building
"Get Acquainted" Meeting

BOOKS

We have the "Correct" Books
Officially Listed by Your Instructors

SUPPLIES

We are a ONE-STOP Store
For all your needs in supplies and kits.
We Sell "Olivetti" Lettera Typewriters.

For friendly and complete service, stop first at the most conveniently located store on the campus.

"THE STUDENTS' BUSY CORNER"

PEDEN'S

2-3474 1245 R St.

For engineering freshmen...

drawing instruments and slide rules

... are important, in college and after. That's why the wise choice is K&E, America's oldest and largest maker of engineering supplies and equipment.

When it comes to Slide Rules... take the K&E Decitrig®:
Its versatile scales team up to give faster solutions of complex problems. A dual purpose D scale and three LL scales cover a log log range of 1.00... to 22,000. And the A-B scales make quick, non-stop work of square root derivations. Sharp, engine-divided graduations permit accurate readings in a hurry.

And... look at K&E Drawing Instruments.
But remember, there's more to drawing instruments than the way they look. It's the important "extras," such as accuracy, materials, workmanship, manufacturer's reputation, that determine genuine value. Every K&E set—and they come in a wide price range—offers you the "extra" features that mean extra value.

"Your K&E College Buying Guide"—will give you useful information on the materials you'll need for your engineering courses... 36 pages, with plenty of pictures, and handy check-list. Get it at your college store.

KE KEUFFEL & ESSER CO.
New York • Hoboken, N. J. • Detroit • Chicago • St. Louis • Dallas • San Francisco • Los Angeles • Seattle • Montreal