

Five Seek '58 'Imagination'

Five University drama students will attend an all-student drama conference, "Imagination '58" Friday and Saturday at the University of Iowa.

Some 200 students from 22 colleges and universities in eight states will take part in the conference, the first of its kind to be held in the Midwest.

Those attending from Nebraska are Len Schropfer, Roy Willey, Henry Blanke, Bonna Tebo and Phyllis Blanke.

Climax of the two-day conference in the uses of imaginative and experimental techniques in acting and directing will be an address by Harold Clurman, New York producer-director.

Clurman, directed the new Maxwell Anderson play, "The Day the Money Stopped," which opened on Broadway recently.

Cosmo Constitution

Cosmopolitan Club will discuss their new constitution at the business meeting 7:30 p.m. Tuesday in Union 316.

The meeting will be on Tuesday instead of the usual Wednesday time to avoid conflict with the Foreign Film production, according to Ken Ackbaril, president.

Male Glee Club Adds Five New Members

Amateur Group Will Tour Lincoln, State High Schools In Spring

The male glee club, consisting of non-music majors, has added five new members to its 1957-58 roster, according to Dale Ganz, director.

Keith Williams, senior in Teachers, is the new second tenor.

Ag students Don Herman, junior, and Ron McKeever, sophomore, sing baritone.

James Peterson and James Eno, engineering senior, are basses.

The glee club schedule for this semester includes concerts in all the Lincoln high schools, beginning with Lincoln High March 12. A campus concert will be given in April.

The annual spring tour this year to towns in northern and eastern Nebraska, has been set tentatively for April 24-25.

Dolly Swift, sophomore in Teachers, is the only female member of the group. A soprano, she sings with the glee club and also performs several solo numbers.

Dale Ganz, assistant profes-

sor of music, organized the group three and a half years ago. Since that time he has personally tried out over 700 men.

Glee club members are: first tenor—Wayne Robertson, Charles Stork, Al Ellerbroeck, Marvin Ruohrer, Dale Tinkley, John Williams, Kenneth Tharp, Kernal Erickson, James Pinkerton, Merlin Montomery, Pro Sherman, Gary Christiansen, Ira Kroese, Ervin Reil, Richard Waldo and Charles Nelson.

Second tenor—Darrel Eberspacher, Keith Rountz, Stanley Widman, Mack Landstrom, Dean Spilker, William Wessner, Ronald Isley, Gayle Gottingham, Tom Eason, Ronald Wenz, James Caldwell, John Elze, William Parsley, John Lintell, Dennis Kider, Ned Toman, Keith Williams.

Baritone—Ken Wehrman, Karl Rasmussen, William Ashby, Don Prohaz, Harold Wells, Archie Clow, Delbert Semiek, Richard Timmerman, Ben Jensen, Carl White, Roger Carter, Lee Miller, Don Herman, Ron McKeever.

Basses—Kenneth Peterson, Larry Schrag, Charles Hood, Lynn Van Winke, Lonnie Boyer, Herb Robling, James Lofgren, Eugene Armstrong, Ron Braun, Bill Larson, Neil Ruckelshaus, Merritt Jensen, James Peterson, James Eno.

Howard Johnson, senior in music, accompanies the group.



TWO SHARP (E) GIRLS—Barbara Sharp, one of the ten finalists for 1958 Miss Queen, is shown above. A picture of Miss Sharp(e) was printed in Friday's paper, but it was the wrong Miss Sharp(e). The 1958 Miss Queen will be elected Wednesday in the All-Women's Election.

Lesson

Victory Holiday Spirit, Equation Proves Reality

By DIANA MAXWELL
Copy Editor

Lesson in arithmetic. One victory, strategically timed, added to one unplanned holiday equals one spirited campus.

"I've got my two tickets in my pocket," announced one student when asked how Nebraska's win over Kansas might affect attendance at future games.

In a quick tour of the Union, it was discovered that the much talked about "spirit" on campus is now a reality.

Several houses have switched their Monday night meeting times to allow members to attend the Kansas State game tonight.

"This is the shot in the arm we needed," commented Maryrene Maxwell between sips of coke.

"This really makes me want to go to the games," said Margaret Shearer, who said she had not been to any games before.

"I go to all the games but this should add to the spirit and increase the enthusiasm," said Marion Hild.

One of his friends disagreed with him, saying that 10 years ago Nebraska beat KU regularly and it did not improve campus spirit any. Further, questioning however, revealed that he had been rooting for KU at the big game.

"I am so happy to see the

team being supported like they should," said Sue Hinkle, fiancee of one of the basketball players.

Another enthusiastic Husker said he had only missed three games this year, but from now on he wouldn't miss any.

Those who said they did not plan to attend tonight's game mentioned pressing matters such as term papers as reasons for this temporary disloyalty.

KOLN-TV Manager Is Lab Quest

Howard Fredeck, manager of KOLN-TV, will be guest speaker at the radio and television lab Monday in Temple 103, according to Don Russell, assistant professor of radio and television.

Fredeck attended Iowa University Technical School of Radio and Television in Kansas City. He was chief engineer and operations manager of WGIL of Galesburg, Ill. before joining KOLN-TV as an assistant manager and was promoted to manager in 1957.

Fredeck will leave March 15 for Peoria, Ill. where he will join WIRL radio station.

NUCWA Fills Three Posts

The offices of vice president and two newly created board positions have been filled for NUCWA.

Mary McKnight has been appointed the new vice president in charge of programs for NUCWA, according to Biff Keyes, president.

Miss McKnight will retain her position until May 6 when the regular NUCWA elections will be held, Keyes added.

Chairman of "NUCWA News" is Emmie Limpo. Her assistant is Ingrid Leder. Sonja Polhman was named chairman of the Service Projects committee and Mary Luke is her assistant.

Miss Limpo, an Arts and Science journalism major, is a Pi Beta Phi sophomore. She is a copy editor for the Daily Nebraskan, editor of the "Y-Wire," and an AUF assistant.

Miss Pohlman, a Delta Gamma junior in Arts and Sciences, is a member of Builders and is a member of two other NUWA committees.

Miss Leder is an Alpha Xi Delta freshman majoring in journalism and political science. Miss Luke, a Kappa Kappa Gamma freshman, is majoring in Home Economics.

Mental Health, LARC Share In AUF Split

Last Of Series Explains Purpose Of Two Charities

This is the third and last article in the series, "Where Your Money Went," concerning contributions collected by the All University Fund. The articles explain each charity to which AUF donated this year and the various purposes the organization serves.

Twenty per cent of the money, or \$1,920, collected during the All University Fund Drive went to the National Association for Mental Health, a national charity, and ten per cent or \$960, was given to the Lancaster Association for Retarded children, a local charity.

Within State

Promoting good mental health and preventing mental and emotional illness are the first aims of the Mental Health Association. Money given to Mental Health will go to the Nebraska division of this national charity to be used for research and cure within the state.

One out of every ten Americans is suffering from some form of mental or emotional disorder. At least 65 per cent of these people could get well with proper treatment, but so few are getting it that today there are more than 750,000 patients in mental hospitals. This is more than there are in all other hospitals combined.

Funds contributed to the National Mental Health Association provide for more private psychiatrists, clinics and guidance services to help people when their mental trouble first begins.

LARC

The Lancaster Association for Retarded Children school was founded four years ago by the parents of retarded

children in Lincoln. Tuition is \$18.50 a month per child. It is supplemented by charity contributions. The only other sources of income for the school are the annual National Association for Retarded Children drive in Lincoln and individual contributions.

LARC school recently moved to new quarters. Their plans for the future include: a full-time director, a full-time speech therapist, a sheltered work shop and the building of residential dormitories.

Through LARC school, many retarded children are taught to take a measure of responsibility and adapt themselves to useful lives in a community.

Besides contributing to Mental Health and LARC school, AUF gave to the World University Service, an international charity, and to the National Heart Association and the National Multiple Sclerosis Society, two national charities.

The officers for AUF's twelfth annual drive, held in November, were Art Weaver, president; Sally Carter Wagner, vice-president in charge of publicity; Mary Huston, secretary; and John Glynn treasurer.

Lil' Crusties

Hate Cold Weather Too!

Cold weather presents problems for crustacean egg carriers.

A zoology student carrying home a few thousand crustacean eggs for experimental purposes had to keep the minute eggs near his body in order the keep them warm. At least 80 degrees temperature is required to maintain the life of the eggs.

Crustaceans are aquatic, water-breathing animals. The eggs carried by the student will resemble tiny shrimp when hatched.

Placed in a salt solution at the proper temperature, the eggs will hatch in less than 48 hours. Their life span is a few months.



Louis "Satchmo" Armstrong ... and Orchestra IN PERSON

SAT.—March 8th—8:00 P. M.

PERSHING MUNICIPAL AUDITORIUM

Adm. 90c Students

ALL PROFITS GO TO THE HEART FUND

This performance underwritten by

BOB RING PLYMOUTH

Tickets on Sale: Bob Ring's 3 locations Miller & Paine Record Shop Gold & Company Pershing Municipal Auditorium



That's why American Express Student Tours are expertly planned to include a full measure of individual leisure—ample free time to discover your Europe—as well as the most comprehensive sight-seeing program available anywhere! Visit England, Scotland, Ireland, Holland, Belgium, Germany, Austria, Switzerland, Italy, The Riviera and France—accompanied by distinguished tour leaders—enjoy superb American Express service throughout.

10 Special Tours . . . 48 to 63 days . . . via famous ships: United States, Liberté, Nieuw Amsterdam, Atlantic, Italia, New York. \$1,198 up.

Other tours available . . . from 35 days . . . \$769 up.

You can always TRAVEL NOW—PAY LATER when you go American Express! For complete information, see your Campus Representative, local Travel Agent or American Express Travel Service, member: Institute of International Education and Council on Student Travel . . . or simply mail the handy coupon.

AMERICAN EXPRESS TRAVEL SERVICE

65 Broadway, New York 6, N. Y. *via Travel Sales Division*
Yes! Please do send me complete information about 1958 Student Tours of Europe!
Name _____
Address _____
City _____ Zone _____ State _____

Jazz Cuties To Compete

Jazz Workshop Event Linked

Applications for "Miss Jazz on NU Campus" will end today at 5 p.m. in the Daily Nebraskan business office, according to Stan Kaiman.

The contest is being sponsored in connection with the Jazz Workshop which will be presented at the Turnpike Ballroom Friday, Kaiman said.

Five finalists will be selected through interviews. The winner along with four runners-up will be announced by the management of the Turnpike at the Workshop.

Applicants to date are Sylvia Rigg, Kappa Alpha Theta; Beverly Doty, Pi Beta Phi; Charlotte Merritt, Chi Omega; Joan Bailey, Alpha Phi; Janice Mack, Alpha Xi Delta; Eunice McCosh, Zeta Tau Alpha.

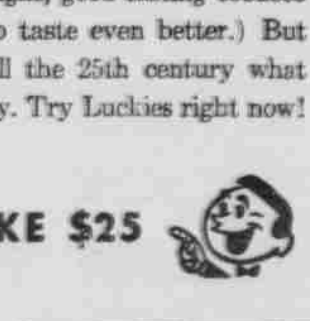
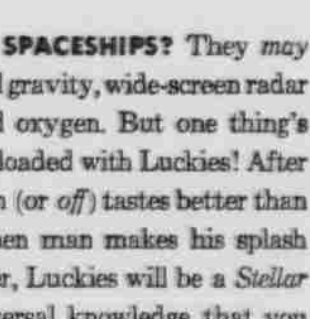
Shari West, Alpha Chi Omega; Sharon Vahle, Alpha Omicron Pi; Bette Breiland, Delta Delta Delta; Barb Conrad, Kappa Delta; Barb Carey, Gamma Phi Beta; and Ina Margolin, Sigma Delta Tau.

Hauserman Heads New ACE Officers

Sara Hauserman was elected president of the American Childhood Education (ACE) student organization at its Feb. 26 meeting.

Other officers elected are Julie Hathaway, vice president; Dixie Peterson, secretary; Sherry Armstrong, treasurer and Judie Williams, Mary Musser and Gloria Erickson, publication heads.

Sticklers!



STUDENTS! MAKE \$25

Do you like to shirk work? Here's some easy money—start Stickling! We'll pay \$25 for every Stickler we print—and for hundreds more that never get used. Sticklers are simple riddles with two-word rhyming answers. Both words must have the same number of syllables. (Don't do drawings.) Send your Sticklers with your name, address, college and class to Happy-Joe-Lucky, Box 67A, Mount Vernon, N. Y.

LIGHT UP A light SMOKE -LIGHT UP A LUCKY!

Product of The American Tobacco Company - Tobacco is our middle name