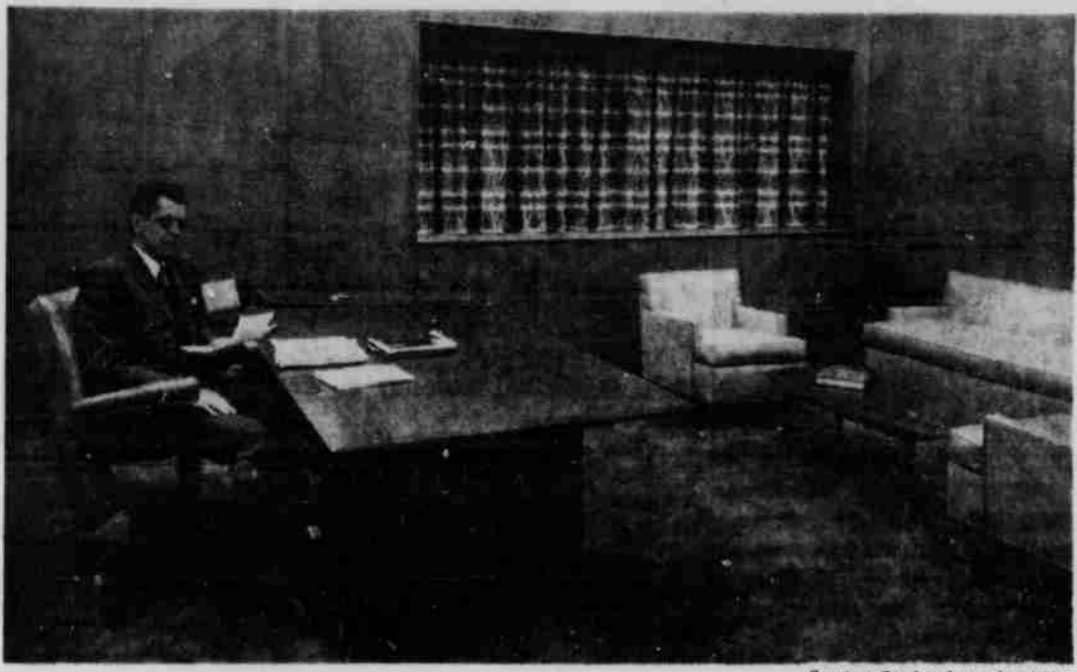


# Administration Starts 1958 In New Home



Courtesy Sunday Journal and Star

Chancellor Hardin's new office is oak-paneled with wall to wall carpeting and comfortable surroundings for business visitors.

For the first time since World War II, the University central administrative divisions will be housed in one building—a four-story "Administration Building." Located at the northwest corner of 14th and R streets, the new home of the administrative divisions was built for \$850,000.

The new building also houses one complete floor of classrooms, seminar rooms, and counseling rooms for Teachers College. The classrooms will be used for freshman courses and the seminar rooms for the Teachers College advanced professional program. In addition, the departments of history and principles of education, and school administration will be in the building.

The administrative offices vacated the 32-year-old former Administration building; 69-year-old Ellen Smith Hall, a renovated house; a temporary barrack structure, obtained in 1947 as war surplus from a nearby military installation; and a leased two-story

building on R street between 11th and 12th streets. Also, the Graduate College moved from the first floor of Social Sciences building into the new structure.

Business Manager Carl Donaldson said the total floor space in the new building is practically the same as was vacated, "although, of course, the space is used more efficiently in the new building."

Dean J. P. Colbert of Student Affairs said the assembling of the offices in one building will prove a great convenience for students who in the past had to visit several buildings to complete one item of business.

Among the offices in the new building which are used frequently by the students are: Division of Student Affairs; Registrar; Counseling Service; Graduate College; Junior Division; Occupational Placement; and University Services and Student Activities.

Chancellor Clifford M. Hardin is the last of seven chancellors to be housed in the former Administration building, erected in 1905.

The former Administration building permits the razing in the near future of two temporary barrack buildings and Ellen Smith Hall, Mr. Donaldson said.

Features of the new Administration building, financed by the state institutional building levy, include:

- Service windows opening from the offices of registrar and University Services and Student Activities into the first-floor corridor,



Courtesy Sunday Journal and Star

Students can be helped at the service window without entering the office.

which will keep traffic flow out of the main portion of the offices.

- Non-bearing interior walls, which will allow for moving of walls relatively inexpensively in the future in case of a shift in the work duties of various offices.
- Corridors tiled door-high, which, according to the architects, will permit less maintenance—cleaning and painting.

A complete list of the offices housed in the Administration building

ing, excluding Teachers College functions, is: Accounting; business manager; bureau of instructional research; chancellor; comptroller; counseling service; dean of faculties; Graduate College; junior division; occupational placement; personnel; public relations; purchasing; registrar; student affairs; data processing; University Press; and University Services and Student Activities.

## On The Social Side: Pinnings Highlight Week

By WYNN SMITHBERGER Social Editor

There were multi, multi pinnings, engagements, and marriages announced around camp this week. Voici!

**Pinnings**

Bobbie Stout, Alpha Xi Delta alumna from Lincoln, to Jack A. McLean, Sigma Alpha Epsilon senior in Business Administration from Scottsbluff.

Rosemary Stochl, Alpha Xi Delta alumna from Des Moines, Iowa, to James Lakin, Sigma Alpha Epsilon senior in Business Administration from Omaha.

Barbara Carey, Gamma Phi Beta freshman in Arts and Sciences from Lincoln, to Keith Bland, Sigma Alpha Epsilon sophomore in Arts and Sciences from North Platte.

Myrna Grunwald, Zeta Tau Alpha junior in Teachers from St. Joseph, Mo., to John Corzine, Pi Kappa Phi senior in Arts and Sciences from Omaha.

Jan Anthony, senior in nursing at Grace Hospital from Hutchinson, Kansas, to Jim Olmsted, Beta Theta Pi senior in Business Administration from Omaha.

Judy Decker, Delta Delta Delta junior in Teachers from Lincoln, to Roger Krounek, Delta Tau Delta junior in Engineering from Lincoln.

Beverly Flack, Alpha Chi Omega junior in Teachers from Lincoln, to Roger Hubbard, Alpha Gamma Rho junior in Agriculture from Omaha.

Betty Clymer, Alpha Omicron Pi junior in Arts and Sciences from David City, to Bill Reed, Alpha Gamma Sigma alumna from Beatrice.

Joy Wagner, Alpha Chi Omega alumna from Lincoln, to Charlie Smith, Delta Tau Delta junior in Teachers from Franklin, New Hampshire.

Prudy Morrow, Kappa Alpha Theta junior in Teachers from Omaha, to Bruce Skinner, Farm House junior in Agriculture from Tekamah.

Jackie Kilzer, Alpha Chi Omega alumna from South Sioux, to Eric Olsen, Phi Delta Theta sophomore in Dentistry from Omaha.

Jackie Miller, Kappa Alpha Theta junior in Teachers from Omaha, to Al Kitzelman, Phi Kappa Psi junior in Engineering from Beatrice.

Jane Ohlsund, Alpha Chi Omega sophomore in Teachers from Rockford, Ill., to Mal Seagren, Sigma Nu senior in Engineering from Wausau.

Phyllis Sobel, Sigma Delta Tau freshman in Teachers from Des Moines, Ia., to Meyer Cohen, Sigma Alpha Mu junior in Arts and Sciences from Lincoln.

Donna Mack, Lincoln, to Jerry Sinor, Sigma Nu senior in Engineering from Cozad.

Natalie Johnson, Delta Gamma junior in Business Administration from Fremont, to Gordon Anderson, Delta Tau Delta junior in Agriculture from Lexington.

Georgia Mahaffie, Delta Gamma freshman in Arts and Sciences from North Platte, to John Benedict, Delta Tau Delta senior in Engineering from Hastings.

**Engagements**

Holly Hawke, Kappa Kappa Gamma senior in Teachers from Lincoln, to Don Larson, Phi Gamma Delta alumna from Los Angeles, Calif.

Marilyn Heck, Kappa Kappa Gamma senior in Arts and Sciences from California, Mo., to Sam Jensen, Beta Theta Pi alumna from Grand Island.

Lou Horchen, Kappa Kappa Gamma sophomore in Teachers from Ransom, Kansas, to Jim Willour, Kappa Sigma senior in Architecture from Ransom, Kansas.

Dallas Hunt, Kappa Kappa

Gamma sophomore in Teachers from Lincoln, to Jim Shields, Sigma Chi senior in Kansas State School of Veterinary Medicine from Falls City.

Peggy Mathers, Pi Beta Phi alumna from Lincoln, to Lt. Robert Berguin USMC, Sigma Alpha Epsilon alumna from Sioux Falls, So. Dak.

Julie Dowell, Pi Beta Phi junior in Teachers from Falls City, to Richard Andresen, Sigma Alpha Epsilon graduate student in Business Administration from Bloomfield.

Sally Leacock, Alpha Omicron Pi from Lincoln, to Arthur Patrick, Sigma Alpha Epsilon junior in Business Administration from Omaha.

Sally Lee Wells, Delta Gamma freshman in Arts and Sciences from Omaha, to Michael Cochran, Sigma Alpha Epsilon sophomore in Physical Education from Omaha.

Joan Graf, Zeta Tau Alpha freshman in Arts and Sciences from Republican City, to Duane Henry, Long Island, Kansas.

Bette Osterlund, Gamma Phi Beta junior in Teachers from Lincoln, to Bill Fraser, graduate student in Arts and Sciences from Lincoln.

Judy Ramey, Gamma Phi Beta senior in Teachers from Lincoln, to Ernie Egbert, Phi Delta Theta junior in Arts and Sciences from Omaha.

Jo Wyrens, Gamma Phi Beta sophomore in Teachers from Omaha, to John Martig, Phi Delta Theta alumna from Omaha.

Jane Fellows, Gamma Phi Beta senior in Medical Technology from Omaha, to Don McIntyre, senior in Pre-Medicine at Dartmouth from Omaha.

Sally Sharrar, Delta Gamma senior in Speech from Omaha, to Jim Pollard, Phi Kappa Psi senior in Business Administration from Lincoln.

Vera Renstrom, Pi Beta Phi junior in Teachers from Omaha, to Don Kirkwood, Phi Gamma Delta senior in Business Administration from Omaha.

Sharon Airy, Chi Omega junior in Teachers from Grand Island, to Larry Naviaux, Delta Tau Delta junior in Teachers from Lexington.

Gretchen Paul, Chi Omega senior in Arts and Sciences from Lincoln, to Warren Diefendorf, Delta Tau Delta senior in Dentistry from Waterville, Kansas.

Kay Lawson, Delta Delta Delta senior in Teachers from Lincoln, to Steve Finn, Delta Upsilon freshman in Law from Tecumseh.

Betty Hoagland from Brady to John Hagemelster, a junior in Business Administration from Hemingford.

Betty Joy, Chi Omega senior in Arts and Sciences from Falls City, to Ben Leonard, Sigma Chi graduate student in Geology from Ainsworth.

Mary Metcalfe, Delta Delta Delta sophomore in Teachers from DeWitt, to Arley Waldo, Alpha Gamma Rho alumna in graduate school at Michigan State from DeWitt.

Harriet Feese, Kappa Alpha Theta freshman in Teachers from Psi sophomore in Geology from Beatrice.

Sharon Smith, Kappa Alpha Theta sophomore in Teachers from Franklin, to Jim Bergman from San Diego, Calif.



The purchasing department has a third typical office arrangement. The data processing office (formerly IBM) is located on the top floor.

Muriel Mossing, Kappa Alpha Theta sophomore in Teachers from Des Moines, Ia., to Paul Warren, Sigma Alpha Epsilon sophomore in Arts and Sciences from Sumter, So. Dak.

Louise Meldrum, Kappa Alpha Theta senior in Teachers from Buffalo, Wyo., to Dale Anderson, Xi Psi Phi junior in Dentistry from Holdrege.

Mary Hodson, Kappa Alpha Theta senior in Teachers from Grand Island, to Bob Schlyer, Phi Gamma Delta senior in Business Administration from Eugene, Oregon.

Sandy Kadlecek, Kappa Alpha Theta senior in Teachers from Omaha, to Stuart Howter, Phi Delta Theta senior in Business Administration from Omaha.

Susie Barkmeier, Alpha Chi Omega freshman in Teachers from Exeter, to Roger Johnson, Exeter.

Tevee Bernstein, Omaha, to Bernard Turkel, Sigma Alpha Mu freshman in Dentistry from Omaha.

Janice Moore, Lincoln, to Wilfred Jensley, Theta Chi senior in Engineering from Davenport.

Joyce Shuey, Omaha, to Keith Turner, Theta Chi senior in Arts and Sciences from Lincoln.

Margie Wilson, Sigma Delta Tau alumna from Lincoln, to Mike Segal, Zeta Beta Tau senior in Arts and Sciences from Greeley, Colo.

Virginia Turchen, sophomore in Teachers from Sioux Falls, So. Dak., to Marshall Becker, Sigma Alpha Mu senior in Law from Omaha.

Jerry Isaman, Phi Sigma Tau junior in Teachers in Doane College from Lincoln, to Art Sharp, Sigma Chi junior in Business from Lincoln.

Joan Kluge, Zeta Tau Alpha senior in Teachers from Madrid, to Larry Haysacker, Acacia senior in Business Administration from Hay Springs.

Jane Harvey, Kappa Delta junior in Teachers from Logan, Ia., to Gary Jones, Logan, Ia.

**Mariages**

Jeanette Blattert, senior in Teachers from Stanton, to Burton Becker, sophomore in Arts and Sciences from Stanton.

Marian Elder, Kappa Kappa Gamma senior in Teachers from North Platte, to Charles Matheson, Pi Kappa Alpha senior in Colorado University from North Platte.

## KNUS Panel To Consider Teacher Issue

During the next two weeks, "The Student Forum," weekly half-hour show over KNUS, sponsored by the YM-YWCA's, will be covering the issue, "Teacher's College vs. The Eleven."

Tuesday at 9 p.m., the featured guest will be Dr. Boyd Carter, chairman of the Department of Romance Languages. The panelists will include Connie Berry, president of Phi Sigma Iota, Romance Language Honorary; Jan Schuman, president of Pi Lambda Theta, Teacher's College Honorary; and Don Schick, senior in the College of Agriculture.

The purpose of these programs fit the overall purpose of The Student Forum: keeping students informed on the major issues in the campus, local, state and national areas.

Studio audiences are welcome. If anyone wishes to question any of the panel members, he may do so during the special audience participation period during the show.

**Cosmo Club**

Cosmopolitan Club will have a meeting Wednesday at 7:30 p.m. in Room 313 of the Union.

The smorgasbord will be discussed and nomination will be taken for president.

## Saylor Named As Candidate For PTA Post

Galen Saylor, professor and head of the department of secondary education at the University, has been nominated for the post of treasurer of the National Congress of Parents and Teachers, for election at its annual convention in Omaha, May 18-21.

His selection was announced here today after a meeting of a five-member nominating committee. If elected to the three-year term, Dr. Saylor will succeed James Snowden of Wilmington, Del.

Dr. Saylor was a member of the National Congress budget committee from 1954 to 1956 and acted as consultant on the organization's recent publication "A Teacher's Guide to the P.T.A."

Dr. Saylor, who has been a professor at the University since 1940 and head of its department of secondary education since 1948, is a former teacher, principal, and superintendent of schools. In 1950 he acted as consultant on teacher education for the U. S. High Commissioner for Germany, and he holds a commission as lieutenant commander in the U. S. Naval Reserves.

Room numbers of administrative offices now located in the new Administration Hall at 14th and R streets are as follows:

- Counseling Service, Room 108;
- Junior Division, 108;
- Occupational Placement, 109;
- University Editor and University of Nebraska Press, 111;
- University of Nebraska Press Sales Room and Storage, 103;
- Bureau of Instructional Research, 104;
- Personel Department, 112.

- Student Activities and Student Services, 206;
- Division of Student Affairs, 207;
- Registration and Records, 208;
- University Business Manager, 304;
- Graduate College, 306.

- Board of Regents, Chancellor, Dean of Faculties and Administrative Assistant of Chancellor, 308;
- Comptroller, 309;
- Public Relations, 312;
- Accounting Department, 505;
- Veterans Affairs, 509;
- Data Processing Department, (formerly IBM Services), 508.

Telephone extensions for these offices remain the same as listed in the current University telephone directory.

# Sticklers!

WHAT IS A BIG METALS TYCOON? **Steel Wheel** (SEE PARAGRAPH BELOW)

WHAT IS A MARCHING BAND THAT NEVER GETS A LUCKY BREAK? **LUCKY STRIKE CIGARETTES**

MEMO TO MAESTROS: is your band dawdling instead of tootling? Is it full of feeble fifers and drooping drummers? Well, this musical slowdown may be traceable to lack of Luckies. Better give your band a break—and make it a Lucky one! A Lucky, you see, is a light smoke—the right smoke for everyone. It's all cigarette—all naturally light, wonderfully good-tasting tobacco. And Luckies' fine tobacco is toasted to taste even better. Now then, what's a marching band that never gets a Lucky break? Why, it's a *Sore Corps!* (Wasn't that cymbal?)

STUCK FOR DOUGHT START STICKLING! MAKE \$25

We'll pay \$25 for every Stickler we print—and for hundreds more that never get used! So start Stickling—they're so easy you can think of dozens in seconds! Sticklers are simple riddles with two-word rhyming answers. Both words must have the same number of syllables. (Don't do drawings.) Send 'em all with your name, address, college and class to Happy-Joe-Lucky, Box 67A, Mount Vernon, N. Y.

WHAT IS A PUMPING BULLY? **Stuffy Toughie**

WHAT IS A FRENCH BASKETBALL PLAYER? **Tall Goul**

WHAT IS A WELL-DRESSED BOXER? **Lapper Scrapper**

WHAT IS A CLAIM JUMPER? **Acra-Taker**

WHAT IS A PUPPY LOVE? **Collie Folly**

WHAT IS A POLICEMEN'S BALL? **Cop Hop**

SALES RENTALS SERVICE BLOOM TYPEWRITER EXCHANGE 323 N. 13th 2-5258

PRINTING Fraternity, Sorority & Organization Letterheads... Letters... News Bulletins... Booklets... Programs 312 North 12th. Ph. 2-2957 GRAVES PRINTING CO.

ROMANO'S PIZZA DRIVE-IN 226 No. 10th St. Phone 2-5961 Free Delivery 21 Variety Pizza Pies 75c \$1.00 \$1.50 \$2.00

LUCKY STRIKE CIGARETTES Product of The American Tobacco Company—Tobacco is our main business

**Want Ads**

LOST—High school class ring, class of '56. Initials—C.B.W. Reward, Phone 2-1410.

AVAILABLE now, 1 single, 1 double, twin beds in fine residence designed for 12 expatriate men only. Warm, quiet, 2 bathrooms. Parking, 1957 P. St. 3-4040

Opening For Membership Available—Commuter, Co-Op, 1/2 Block South Love Library, \$56 per month. Ph. 2-1410.