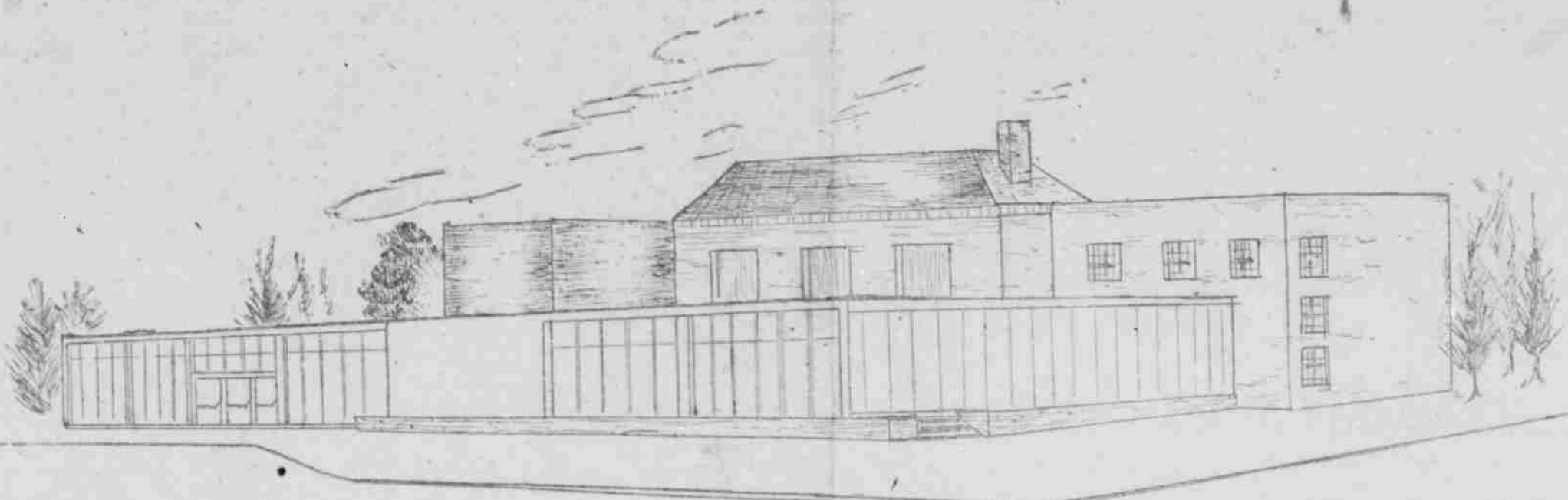


# Merry Christmas



## To Nebraska University



**Christmas Party**  
 Nowell Kollath is looking on as Dick Gustavson, portraying Santa Claus, is giving a present to one of the 60 orphans that attended the annual Intra-fraternity Council Christmas Party.

### 'Unto Us A Child Is Born, Unto Us A Son Is Given

By DR. LUKE

In those days a decree went out from Caesar Augustus that all the world should be enrolled. This was the first enrollment when Quirinus was governor of Syria. And all went to be enrolled, each to his own city. And Joseph also went up from Galilee, from the city of Nazareth, to Judea, to the city of David, which is called Bethlehem, because he was of the house and lineage of David, to be enrolled with Mary, his betrothed, who was great with child. And while they were there, the time came for her to be delivered. And she gave birth to her first-born son and wrapped him in swaddling clothes and laid him in a manger, because there was no room for them in the inn.

And in that region there were shepherds out in the field, keeping watch over their flocks by night. And an angel of the Lord came upon them and the glory of the Lord shone round about them and they were sore afraid. And the angel said to them, "Fear not, for I bring you good tidings of great joy which shall be unto all people. For unto you is born this day in the city of David a Savior, who is Christ the Lord. And this shall be a sign unto you: you will find a baby wrapped in swaddling clothes and lying in a manger." And suddenly there was with the angel a multitude of the heavenly host praising God and saying, "Glory to God in the highest and on earth peace good will to men. When the angels went away from them in heaven, the shepherd said to one another, "Let us go over to Bethlehem and see this thing which has happened which the Lord has made known to us." And they went with haste and found Mary and Joseph, and the baby lying in manger. And when they saw it they knew the

# the DAILY NEBRASKAN

Vol. 32, No. 52      Lincoln, Nebraska      Friday, December 20, 1957

## Construction on Union To Start in January

### ...\$1,300,000 Job Has Bowling, Drive-In, Theater

By JACK POLLOCK  
 Editor

Santa's million dollar present to the University community, a modernistic two-story addition to the Union is finally ready for delivery.

With final drafting plans just off the drawing boards, bids are now being taken for the \$1,300,000 project. Completion date is January, 1960, or possibly as early as the fall of 1959, according to Union Director Duane Lake, supervisor of the project.

Approval of contracts by the Board of Regents at its annual meeting Jan. 11 seems probable, meaning construction could begin about a week after students return from the holiday vacation.

The front of the completed building will be toward the north, facing "S" street, with a two-way drive in front of the entrance.

The glass-fronted addition will be more than double the size of the present Union. Construction will be such that another floor can be added at a later date.

Now called the "Student Union," the new structure will be named the "Nebraska Union"—since the facilities are for all elements of the campus population, faculty and alumni, as well as students.

New facilities will include a 10-lane bowling alley, billiard room, drive-in service, barber shop, laundry and small auditorium. In addition, it will also provide the Union with a new kitchen, dining room, cafeteria, main lounge, enlarged Crib, three music listening rooms, a main ballroom, junior ballroom, 11 smaller meeting rooms and eight private dining rooms.

Funds for the addition are provided by student activity fees. The project does not include \$200,000 in new furnishings, which will be purchased under a separate contract, nor does the \$1,300,000 include funds for the bowling alley.

Financing of the alleys, which will cost an estimated \$120,000 complete with automatic pin-setters and two rows of spectator seats and lockers, will be based on a "pay as you play" policy, according to Lake. Bids for the alleys are expected to be let in nine to 10 months.

Opening of the building will be on a stepped or gradual basis, with portions of the present Union closing at different times for renovation. The dining room and cafeteria, now the main lounge area, is expected to be in operation by next fall, followed by a Fountain Lounge about four times the size of the present Crib.

Future plans show a drive-in area on the east side of the union, with an "S" street entrance. Operation will be by an inter-communication call-in setup for four cars and one pick-up window.

The third floor of the present building will become a student activities center, with office space for campus organizations, excluding student publications, which will retain their offices on the ground floor. The Union activities office, a typing and poster room will also be on third.

The ground floor of the present building will house the barber shop, men and women's student dressing rooms, publications section, food storage, bake shop, crafts shop, commuters lunch room and laundry.

Operated on a lease basis, the Union would hire a manager for the five-chair barber shop, who in turn would hire four more barbers.

The men's dressing rooms will include facilities for showering, 60 lockers and an adjoining room with three cots. A similar set, with 45 lockers, will be in the women's dressing rooms.

More than 200 lockers will be available, with possibly some for rental purposes, for commuters—off-campus students. Also in the lunch room will be vending machines for ice cream and a check-in service.

Although primarily for Union use, the laundry will be equipped with automatic washers and driers for student use, according to the Union director.

On the ground floor of the new building will be most of the recreational facilities, including a 200-seat auditorium equipped with theater-type seats. Adjoining the auditorium by direct access is a reception-dining room so conferences may have convenient facilities permitting conferees to adjourn to dining rooms without waiting for chair resetting or congregating in corridors.

Also on the ground floor will be a "multiple purpose" party room that can serve as one unit or two. This room, according to Lake, will be used most of the time for informal juke box dancing and TV or scheduled group parties.

Adjacent to the party room is a refreshment and card lounge. Vending machine refreshments available will include malted drinks, coffee, hot chocolate, soup, sandwiches, hot sandwiches, carbonated drinks, ice cream lines and milk.

Near the lounge will be a 12-table billiard room, a table tennis room with six tables and the bowling alleys.

Eight lanes of the alley can be scheduled for league play and intramurals, and at least two will be kept open for other players, according to Lake. Payment on a time basis, rather than a charge per line is being considered, Lake said.

Bowling instructions will be offered by the Union. Currently physical education classes teaching bowling use local bowling alleys.

The main floor of the Union will house the junior ballroom, labeled the "Pan American" room in the blueprints, the Fountain Lounge (Crib), dining room, cafeteria, staff offices, TV area, music rooms, book nook, and gallery. Near the "S" street entrance will be services including an information desk, check stand, rest rooms, telephones, supply desk, and magazine and paper stand.

The Pan American room, which is expandable with facilities for 300 plus at dinner, will be very suitable for organization dinner dances, Lake explained, with sections of the room opening onto the terrace.

Architectural treatment of the Fountain Lounge, now called the Crib, will be to achieve an informal atmosphere and semi-private table groups. Tables will be coffee-table height with semi-lounge furniture to give a "coffee lounge" effect. Only booth seating is used in the present Union.

The Fountain will be geared for high speed service, according to Lake, with "by-pass" sections depending on the type of food ordered. A call-service will be used in operation with the grill. Special floor sections will be set up with condiments to avoid holdups in the lines. Double cashiers will be used during busy hours, and a special coffee bar will be set up for those wanting coffee and doughnuts.

The cafeteria will open into the lounge and also into dining rooms for groups not wanting to pay for group service. The Corn Crib will be divided into two dining areas, with the present Book Nook becoming an area for table service.

The cafeteria will have only one line but will be divided into special food sections to expedite line movement.

Across the corridor from the Fountain Lounge will be the main lounge, on the west side of the building, which will be enclosed by glass, as is most of the north side of the building. The Main Lounge will include a separate TV area and three music listening rooms.

A 40 foot by 40 foot book nook will be finished with the panelings, and fireplace from Ellen Smith Hall by the Alumni Association as an Alumni Memorial.

Changes on the second floor will include a double access to the stage in the ballroom, and parlors A, B, and C will become meeting and conference rooms.

The new Union, according to Lake, will be "extremely functional" compared to the present building. One of the handicaps of the present Union is that the principal dining units—the cafeteria, and Corn Crib are on the first floor, separate from the kitchen, and inadequately equipped. This results in long hauls, delays in service, cold food, extra labor and general efficiency affecting both customer and Union financial operation, Lake said.

The new kitchen, scullery, and food storage rooms are next to the Fountain Lounge and Cafeteria.

Also featured is an "automatic absorption refrigeration" system which uses low pressure steam to produce refrigeration for air conditioning. The 500-ton unit takes up one-third the space of a comparable centrifugal system, requires no regular supervision and operates automatically.

### Jan. 13-16 Scheduled As Registration Dates

The registrar's office has released the dates for the second semester registration. They have been scheduled for Jan. 13 through 16.

A definite schedule of hours will be announced the week before registration, according to Mrs. Leroy Lasse, assistant registrar.

Students will pull cards according to earned hours. Seniors will register first, beginning on Jan. 13 at 9 a.m. The drill hall of the second floor of the Military and Naval Science building will serve as the registration place.

The Student Council approved dates for the payment of fees as Jan. 24, 27 and 28.

Students are to see their advisors prior to the registration dates, Mrs. Lasse said.