



Courtesy Sunday Journal and Star

'The Forest'

This painting, which belongs to the University Art Gallery, has been selected to hang in the United States Ambassador's residence in Ottawa, Canada. It was

painted by Max Weber, and was sent to Canada at the request of the U.S. Department of State. Story at right.

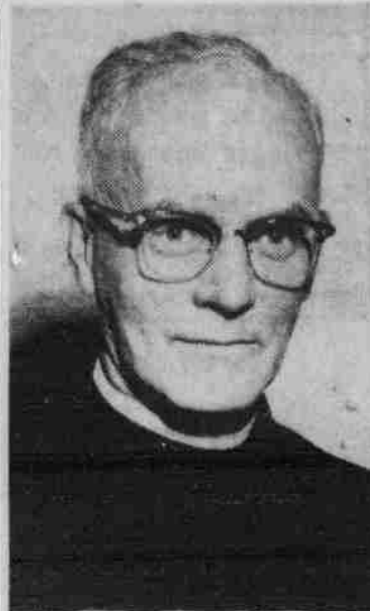
Barker, Armstrong:

Episcopal, Presby Houses Get New Student Pastors

New pastors have joined the staffs of the Presbyterian-Congregational Student house and the Episcopal Chapel on the University campus.



Barker
Doane College and of Yale Divinity School.



REV. ARMSTRONG

"The major reason for adding me to the staff" Barker stated, "was to increase the outstate work. Probably Rex and I will be on the road quite often, visiting the colleges around the state and attempting to improve the Presbyterian and Congregational programs there."

Barker said that he found the program at Presby House "very energetic." The study programs at the house would probably receive greater emphasis this year, he remarked.

"Our student house provides such a wide variety of programs to its members, fellowship, service and social life, that we hope to be able to interest every type of student in one or another," Barker stated.

Father Gilbert Armstrong, recently with the Diocese of West Missouri, has been appointed Chaplain of the Episcopalian Chapel.

Father Armstrong stated that he expects to strengthen the Canterbury Club, the choir, the layreaders service and the drama program at the chapel.

Botanists Cite NU's Weaver

Dr. John Weaver, emeritus professor of plant ecology at the University is one of 39 botanists to be cited by the Botanical Society of America.

Dr. Weaver received a citation for merit achievement at the society's Golden Jubilee celebration.

He received the award for "his lifetime of researches on the ecology of grasslands."

The citation read: "His investigations have contributed to the understanding of the dynamics of vegetation and have helped provide a necessary background for new policies in range management."



Weaver

The-- Inside World

Glee Club Tryouts Set

All male students who are not music majors are urged to tryout for the openings in the University Men's Glee Club, Dale Ganz director and assistant professor of voice, said Wednesday.

Tryouts will be held in Room 14, Music Buildings, from 9 a.m. to 4 p.m. on Wednesday, Thursday and Friday.

The Men's Glee Club will perform during the school year at campus affairs, including two basketball games, at concerts in Lincoln, and on a spring tour throughout the State.

Mass Kernel Meeting Set

A mass Kernel meeting for all interested freshmen men and women will be at 7:00 Wednesday evening in the Union Ballroom, according to Don Beck, vice president of Corn Cobs.

Attendance is mandatory at this meeting for all future Kernels. Kernels should bring I.D. cards and money for tickets. The price of tickets is six dollars. They entitle the holder to a seat in the Kernel section at all home games. Kernels is the Freshmen pep organization. Last year they were called Pepsters.

Art Exhibit: Exhibition Opened By University Art Department Sunday Afternoon

The University Art Galleries opened a new exhibition season Sunday, with a showing of paintings in oil and water color by Milton Avery, an American painter, according to Norman Geske, acting director of the galleries.

Avery's paintings are being displayed through the courtesy of the Grace Borgenicht Gallery of New York. The exhibition, selected from the artist's work of the past several years, will remain on display through Oct. 14 in Morrill Hall.

Phil Rueschhoff, extension coordinator of art and music, an-

nounced Thursday that eleven college and art museums in the United States and Canada have requested for the coming year's Art exhibit. The display is a combination of two exhibits sponsored by a local department store, the Nebraska Art Association, and the University Extension Division.

A gallery painting, from the F. M. Hall collection, has been selected for hanging in the U.S. Ambassador's residence in Ottawa, Canada, according to Geske.

He reported that the painting, Max Weber's "The Forest," was

sent last week to Ottawa at the request of the U.S. Department of State.

The University Gallery is one of two galleries which has been requested by the State Department to loan paintings of American artists in a new program designed to feature American art work in embassies around the world.

A committee composed of wives of U.S. officials, including Mrs. Samuel Waugh of Lincoln whose husband is president of the U.S. Export-Import Bank, recommended the program.



Card-Pulling Blues

The most harrowing and most discouraging scene in new student week for freshmen and old-timers alike was the standing in

line to pull cards, only to find this or that section full, resulting in a complete overhauling of the schedule, and five eight-o'clocks.

Q. Why Are Viceroy's 20,000 FILTERS Made From Pure Cellulose?



A. Because cellulose is a soft, snow-white material... the same pure, natural substance found in many of the good foods you eat every day.

Only the exclusive Viceroy tip contains 20,000 tiny filters made from pure cellulose—soft, snow-white, natural—twice as many filters as the other two largest-selling filter brands. That's why Viceroy gives you...

The Smoothest Taste in Smoking!

Smoke Smoother VICEROY



GREEKS

Are you enjoying the benefits of **PROGRAM SERVICE**

Call 2-1692 for requests

THANKS* ... AG STUDENTS!

YOUR PAST PATRONAGE AND COURTEOUS ACCEPTANCE PROMPT US TO CONTINUE OUR "SCHOOL OPENING" SERVICE TO YOU AT

BUY USED BOOKS AND SAVE **BILL MURPHY'S DRUG**

* VISIT BILL MURPHYS AND HAVE A FREE REFRESHING COKE ON US. 33RD AND HOLDREGE

(Sept. 13 thru Sept. 20)