

The Religious Week

An Ecumenical Missionary Team, Benjamin Lall of India and Robert Thorp, a missionary to Guatemala, will be at the University Monday through Wednesday.

The team is visiting selected campuses throughout the country for the purpose of sharing with students their understanding of the



Lall Thorp

message and mission of the Church in a world in revolution and of talking individually with students who are interested vocationally in Christian missions.

Lall is Executive Secretary of the North India Synodical Board of the United Church of North India and Thorp is director of the University Student Center and professor at the Presbyterian Theological Seminary in Guatemala City, Guatemala.

Glassblower: Rare Skill Aids NU Scientists

Tasks including everything from making glass atomizers small enough to hold in the palm of the hand to repairing the chipped rims of huge glass milk jars is the job of Walter Sampson, University glass technician.

Sampson, has organized a thriving business in Avery Laboratory since he arrived in 1950.

The University's glassblower provides professors and graduates engaged in research with the special equipment needed to carry on their work.

His creations are numerous. Geiger counters for cosmic ray research, special flasks for wheat rust experimentation and equipment therefor soil-testing laboratory are just a few.

Sampson's skill enables the University to save many dollars it would ordinarily have to spend to purchase the same equipment.

Very few people today know the art of glassblowing. Sampson acquired his skill from an old German professor at Iowa State University.

The Inside World

Adelphi

Newly elected officers of Adelphi are Nancy Hunter, president; Maureen Newhouse, vice-president; Shirley Kilburn, secretary; Maruta Grinbergs, treasurer; Lois Jean Wolfe, historian, and Alverta Strickland, pledge trainer.

'Pot Luck'

The last in a series of "Pot Luck With The Profs" suppers will be held Sunday at 5:30 p.m. in the Ag Union lounge, according to Charlie Trumble, committee chairman.

Ag Breakfast

The annual Ag College Pre-Easter Breakfast will be held Sunday at 7 a.m., according to Jim Turner, publicity chairman.

Poetry Review

Berniece Slote, associate professor of English, will review the poetry of Karl Shapiro, recently appointed English professor, at 4 p.m. Wednesday in the Union Faculty Lounge. Coffee will be served.

AWS

Representative and alternates of the AWS House of Representatives will be required to attend a meeting next Thursday Sue Simmons, AWS Board member, announced.

Officers

Newly elected officers of Farm House Fraternity are Jim Feather, president; Charles Trumble, vice-president; Leo Damkroger, secretary, and Jim Turner, treasurer.

QUENTIN'S

Town & Campus

Girls—

Dresses
Sportswear

WE'VE GOT 'EM!
Priced to Suit
YOU
COME IN RIGHT AWAY!

The team will speak at Presby House Monday at 4 p.m. and at a Faculty-Student tea at 4 p.m. Tuesday at Rosabouton Hall.

Presbyterian-Congregational 333 No. 14th
Sunday: 5:30 to 7:30 p.m., forum with The Rev. Verne Spindell of Vine Congregational Church speaking on "Though He Died, Yet Shall He Live."

Monday: 7 a.m., Bible study.
Tuesday: 7 p.m., Sigma Eta Chi.
Wednesday: 7 a.m., cabinet; 7 p.m., vesper.
Lenten Devotional Services, 12:30 p.m. Monday through Friday at Cotner Chapel.

Lutheran Student House 535 No. 16th
Friday: 6:15 p.m., Mr & Mrs. Club pot luck and program.
Sunday: 9:30 a.m., Bible study; 9:30 and 11 a.m., worship services; 5:30 p.m., LSA, joint supper and program with Ag LSA; Bible study and worship based on Seven Last Words.

Tuesday: 7:15 p.m., course on Romans.
Wednesday: 7 p.m., Lenten vesper; 7:15 p.m., choir.
Thursday: 7:30 p.m., Inquirer's class.

Wesley Foundation 1417 R
Sunday: 9:15 to 10:15 a.m., morning devotional services; 5 p.m., Wesley fireside supper; 6 p.m., forum on the subject of "Communion" by the Rev. L. R. Davis; 6:45, worship. Communion will be served.

Wednesday: 6:30 a.m., breakfast; 7:15, meditation lead by the Rev. Bob Linder from Ceresco Methodist Church.
University Lutheran Chapel (Missouri Synod) 15th & Q
Sunday: 10:45 a.m., worship; 6 p.m., student-alumni banquet (County Attorney Elmer Scheele, speaker).

Wednesday: 7 p.m., final Lenten meditation; 7:30 p.m., choir.
Thursday: 3:30 to 5:30 p.m., coffee hours; 7 p.m., doctrine group.
Newman Club 1602 Q
Sunday: 8 a.m., 9 a.m., 10 a.m., 11 a.m., and 12 noon masses.
Monday through Saturday: 6:45 and 7:15 a.m., weekday masses.

Religion classes: 11 a.m., Tuesday, and Thursday; 7 p.m., Tuesday, Wednesday and Thursday.
Lenten devotions: 5 p.m., Sunday; 5 and 8 p.m., Wednesday; and 7 p.m., Friday.
University Episcopal Chapel 246 No. 13th
Sunday: 11 p.m., worship service; 4 p.m., Canterbury study groups; 6 p.m., Canterbury dinner.

Wednesday: 7 a.m., Holy Communion; 7 p.m., Lenten service; 7:30 p.m., choir rehearsal.
Unitarian 12th & H
Sunday: 11 a.m., worship service; 5 p.m., student group meeting.
Baptists and Disciples of Christ Student Fellowship 1237 R
Sunday: 5 p.m., Fellowship dinner, worship and forum.
Tuesday: 7:30 a.m., chapel service.

Ag Interdenominational 34th & Holdrege
Sunday: 6:30 p.m., program, discussion led by The Rev. Don Littell followed by worship and recreation. No supper will be served.
South Street Temple
Friday: 8 p.m., services.
Sunday: 10:30 a.m., religious school; 8 p.m., worship.



Reider Quizzed

Henry Reider (right), chief rector for the University museum, and his TV partner, Susan Reiser, of New York City, recently

won \$900 by correctly answering questions on "Two for the Money." The questions were posed by Herb Schriner.

Feud: 'Hillbilly Hilarities' Theme For Carnival

Ag College Activities Building will be the scene of the annual Ag Estes Carnival Friday, 8-11 p.m.

Theme of this year's Carnival is "Hillbilly Hilarities," and it will be centered around the original Hatfield and McCoy feud, according to Walt Schmidt, chairman.

A costume contest will be one of the features of the event. Prizes will be awarded to the most originally dressed hillbillies representing Grace Hatfield and Henry McCoy, the two survivors of the history-making feud.

Organizations represented at their booth themes and chairmen are Love Hall, "Love Hollow," Helen Bishop and Janice Baker; Loomis Hall, "Travelin' Tails," Mary Berger and Alice Sides; Home Ec Club, "Patchwork Paradise," Deanna Brier; VHEA, "Hillbilly Hit Parade," Genelle Jensen and Marilyn Zuhlke; Alpha Gamma Sigma, "Hillbilly Wedding," Bob Lebruska; Ag Men, "Hillbilly Hide-away," Gene Brier; Farm House, "Save Will's Still," Don Kilday, and Alpha Gamma Rho, "Feudin' and Fight'n," Wilber Wakefield.

Dancing will take place throughout the evening and winning booths will also be presented at that time.

Varsity

FRANK ELEANOR KIM
SINATRA PARKER NOVAK

Otto Premlinger's

THE MAN WITH THE GOLDEN ARM

Adults—50c Thu 2 p.m.—25c 2-6 p.m.
10c After 8 p.m.
NO CHILD TICKETS SOLD.

CHICKEN DELIGHT

PHONE 5-2178

We NOW Serve

Chicken Delight Dinner	1.35
Chicken Delight Snack	85c
Shrimp Delight Dinner	1.35
Shrimp Delight Snack	85c
Pork Delight Dinner	95c

Free Delivery

Open Seven Days A Week
115 So. 25th St.

Hmm, it says here . . . the news of Spring is the light touch in Sport Coats from

MAGEE'S

Jack Justice is already in step with Spring in his Ivy styled New Haven model by Varsity Town. The trend in Spring Sport Coats is lightness, both in weight and color and Magee's have a terrific selection. . . . Ivy Sport Coats with all the style and good looks well-dressed collegiates demand. In choice tweeds, shellands and newest stripe effects.

29.50 and up

Stocks . . . charcoal or brown flannel. 13.50 and 16.50

Men's Clothing . . . Magee's Second Floor

'Woman's World': Union To Present Career Conference

A series entitled "It's a Woman's World" will be held Thursday afternoon and evening at the Union to help college women decide "after college what?"

The conference will feature three prominent Lincoln women discussing qualifications needed in the area of home career and community.

Mrs. Norma Ver Maas will speak on careers, Mrs. Carl Deitemeyer, Mrs. America of 1956, on the home, and Mrs. Thomas Pansing, president of the Lincoln Cub Scouts, on the community.

Mrs. Frances Vogel, Assistant to the Dean of Women, will act as moderator.

Presidents of the major women's organizations will serve as hostesses for an informal coffee following the discussion. The Union Convocation Committee is in charge of the event.

The evening section of the conference will feature a dramatic presentation by Mrs. Frances Homer, a dramatic actress from Cleveland. She will present a group of character sketches entitled "Brief Chronicles of Women Today and Yesterday."

Mrs. Homer, who has been in the theater for 15 years, has toured the United States, Canada, England and France. She has played leading roles in Tarkington's "Penrod" and O'Neill's "Beyond the Horizon."



MRS. HOMER

Her experience on the American stage has contributed much to her original character sketches which have won for her national acclaim.

Her sketches include such women as Mrs. John Adams, wife of a President, and Mrs. Benedict Arnold.

YWCA Job Interviews Scheduled

Miss Mary Alice Thomas, Recruiting Consultant of the National Board of the Young Women's Christian Association, will be at Rosa Bouton Hall on March 22 to interview women students for professional jobs in the YWCA.

Miss Thomas has been in the Personnel Service Division of the YWCA since 1948. She is responsible for work with National Board members and local committees carrying a national recruiting assignment.

Interviews with Miss Thomas can be arranged by contacting Miss Janice Osburn, Director of the University YWCA, at 420 No. 16th.

APRIL FOOL

and St. Patrick's Cards are here

GOLDEN ROD

215 North 14

You Are Invited To Worship

ST. PAUL METHODIST CHURCH

12th and M Streets

Morning Worship—11:00 A.M.
Sermon topic: "An All-In Victory"

Church Study Classes—9:45 A.M.

Radio Ministry Every Sunday
KFAB—9:00-9:15 A.M.
KFOR—11:30 A.M.

Ministers:
FRANK COURT, RALPH LEWIS, SAMUEL BEECHNER
DONALD BLISS—WESLEY FOUNDATION

KEEP YOUR SUNDAYS SACRED THROUGH THE HOLY HUSH OF WORSHIP!

Too Gold And Snowy To Wash Your Car?

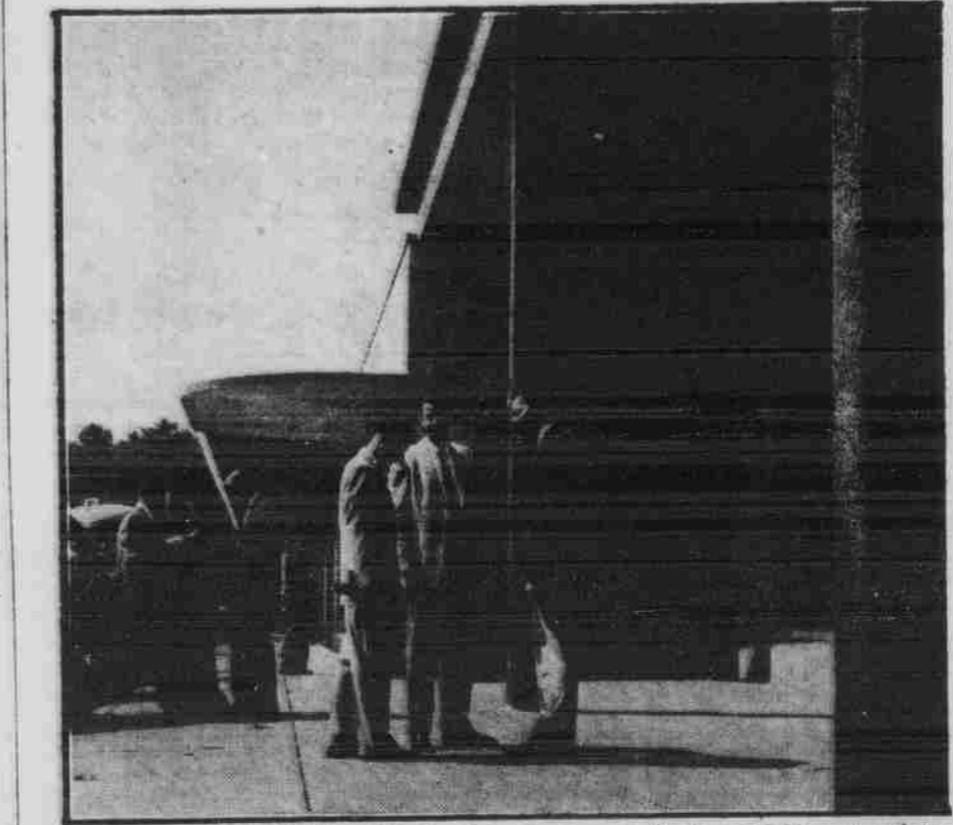
HAVE IT WASHED AT THE JET CAR WASH 2222 "O"

A superb wash in 15 min. for only \$1.50

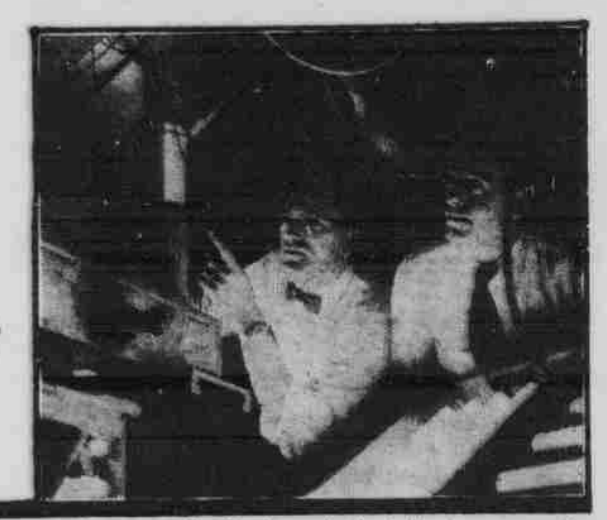
Open until 6:30 daily. Sun. 'til 1 p.m. with WHITE WALLS \$1.75

What's doing at Pratt & Whitney Aircraft

R. P. I. Dedicates Graduate Study Center Near Main Plant



Engineers from Pratt & Whitney Aircraft waiting for classes to begin at R.P.I.'s new graduate study center. Courses, leading to advanced degrees in specialized fields, include Aeronautical Engineering, Applied Mechanics, Higher Mathematics, Thermodynamics, Nuclear Technology.

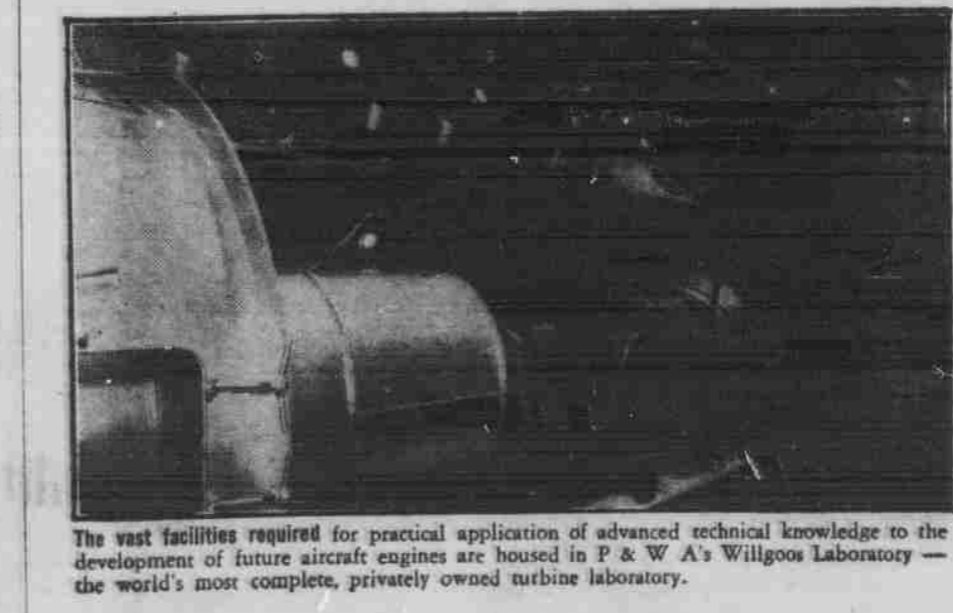


Engineers participating in graduate study program complete their classroom training with laboratory experience gained through their daily employment.

The dedication last month of a full-fledged graduate center near the Pratt & Whitney Aircraft plant in East Hartford, Connecticut, set a precedent in relationships between industry and education. At a cost of \$600,000, P & W A's parent company purchased and equipped the building that was presented outright to Rensselaer Polytechnic Institute for its Hartford Graduate Center. Moreover, an additional grant by this industry leader to R.P.I. was used to establish a liberal fellowship fund. Since last fall, when classes first began, this tuition-assistance plan has functioned to assure advanced education for Pratt and Whitney Aircraft's applied scientists and engineers.

The new graduate study center, 115 miles away from its home campus in upper New York State, is staffed by a resident, full-time faculty. Engineers at Pratt & Whitney Aircraft and other companies in the vicinity are able now to continue their education without interrupting their normal employment.

Designed to raise the level of knowledge and to broaden the base from which research can be approached, this unique new concept of education will lead enrolled engineers to greater achievement in their careers through pursuit of advanced degrees in specialized fields from the nation's oldest engineering college.



The vast facilities required for practical application of advanced technical knowledge to the development of future aircraft engines are housed in P & W A's Willgoos Laboratory—the world's most complete, privately owned turbine laboratory.



R. P. I.'s Hartford Graduate Center, a modern, one-story building in a suburban location, is just a few minutes drive from the P & W A plant. Student facilities include a large lecture room, a library, classrooms, seminar rooms, a cafeteria, and parking areas.

World's foremost designer and builder of aircraft engines

PRATT & WHITNEY AIRCRAFT

DIVISION OF UNITED AIRCRAFT CORPORATION
EAST HARTFORD 8, CONNECTICUT