

# Industry Demands Engineering Grads

Students in the University College of Engineering will have no worries in finding a job, because the demand for competent and qualified engineers is at its greatest peak at the present time, and there is no prospect that the registration in colleges of engineering will supply industry with sufficient manpower for several years. Since the demand exceeds the supply in all fields of engineering, the student should select the field which satisfies his own personal interests and ability to succeed.

If one has no high school deficiencies and rates high in placement tests, he can earn a degree in Agricultural Engineering in eight semesters. Chemical Engineering will require an extra summer school session, and a degree in Architecture requires a ten-semester course.

However, if a student works

more than ten or twelve hours per week, if he has high school deficiencies, if he does not score high placement tests, or if he wishes to earn a commission in the armed forces, he usually plans to take an extra semester to complete his degree. Deficiencies can be made up by taking special, non-credit courses.

Engineering College has three honoraries for its students. These are Sigma Tau, Pi Tau Sigma, and Eta Kappa Nu.

Sigma Tau is a national honorary engineering society that was founded at the University of Nebraska in 1904. Selection to membership is made from junior and senior students on the basis of scholarship and other qualifications indicating future promise in the field.

The Pi Chapter of Pi Tau Sigma was installed at Nebraska in 1938. This is a national honorary society whose membership is limited to junior and senior mechanical engineering students. Election to membership is based upon high scholastic standing and personality characteristics as judged by faculty and fellow students.

In 1949, Eta Kappa Nu installed its Beta Psi Chapter at the University of Nebraska. It is a national honorary open only to electrical engineering students, and membership is based on high scholastic standing and personal characteristics.

The publication of the Engineering College is the Nebraska Blueprint Magazine. Members of the college edit this magazine which contains articles of interest to aspiring engineers in all phases of the field. It features a humor page and stories concerning the activities of the University's College of Engineering. The Blueprint office is the first floor of Stout Hall.

Every spring the college presents Engineering Week, or "E Week." This year the week was climaxed by a banquet for all engineering students. Members of the different schools engineering plan and present displays which are open to the public during E Week.

Such displays include features on modern electronics, television, etc. E Week displays are open during the day and in the evening.

## Ag College Features Varied Fields

On the busy but peaceful Agriculture Campus of the University, students can learn how to feed cattle, which grasses to grow where, or how to cook and sew; and at the same time they can take courses in English, physical education, political science, and so on.

On Ag Campus there is an Ag Student Union, an Ag edition of the Nebraskan, and an Ag branch of the University of Nebraska Builders. On this campus students can learn how to rope a steer or feed a chicken.

Founded in 1860

The College of Agriculture was founded in 1860 when the University was established by the State Legislature under an act providing for such a college. In 1872 the Regents ordered the college to be opened.

Students here may do research for teaching. On graduating from the College of Agriculture one receives a Bachelor of Science in Agriculture or Home Economics degree after successfully completing four years of work.

In home economics, courses are offered in food and nutrition, child care and development, clothing and textiles, institutional management, dietetics, economics, and housing and equipment.

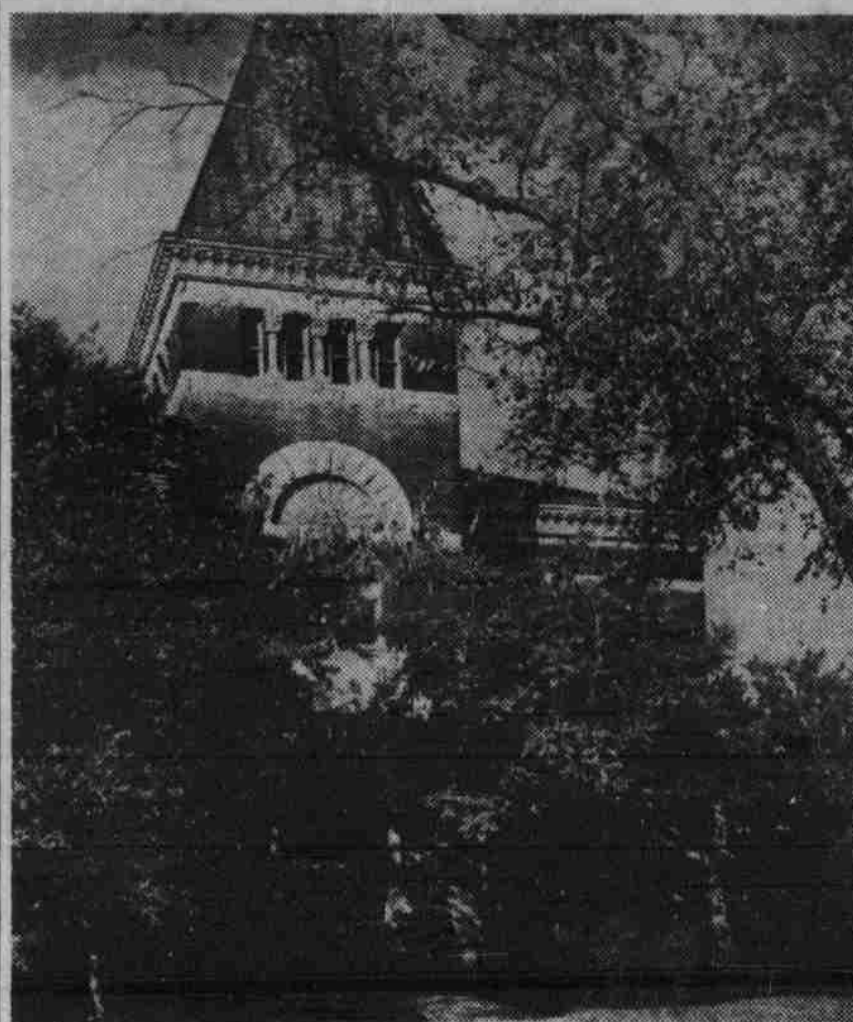
Recently becoming a field full of opportunities is a combination of home economics and journalism. Publications demand nutrition and fashion experts and advisers.

Students Select

Courses in physical and biological sciences, English, and the arts are required. Students select sequences that prepare them for the occupation they desire to enter.

The Agriculture Experiment Station is a branch of the College of Agriculture and is a research or fact-finding bureau. It serves the families of Nebraska, a valuable service in a primarily agricultural state, as well as numerous industries that are closely related to agriculture.

The function of taking new facts and methods developed at the Experiment Station to the farm people is carried out by another branch of Ag College—the Extension Service. This is a state agency and there are extension agents throughout the state. Information gathered in research laboratories in other states is also extended to the farm people by the Extension Service.



THE OLD PHARMACY BUILDING faces its last days on the campus pending the erecting of a new, modern Pharmacy Hall.

## NU Med College Located in Omaha

The University's College of Medicine, which has operated in Omaha since 1902, had an enrollment last season of 340 medics, 85 new students and a full and part-time staff of 209. The entire four-year course has been given in Omaha since 1913.

In order to enter the College of Medicine, a student must have at least three years of college work, or 90 semester hours in an accredited college. For the first two years of study, the med student attends lectures and labs and learns the basic fundamentals of his chosen career.

As a junior and senior, he has his first opportunity to observe the effects of disease, the treatment and the subsequent progress of individual patients. His chance to apply his gathered knowledge comes in the following two years of internship.

The young med student who re-

ceives his degree from the College of Medicine will leave behind him four years of intensive medical study. However, he will be directing the information and experience gleaned from these four years toward four more years of post-graduate preparation.

The degree of Doctor of Medicine is granted only under the following conditions: 1. The candidate must be at least 21 years of age. 2. He must possess a good moral reputation. 3. He must have complied with all the requirements of admission. 4. He must have pursued the study of medicine for at least four years and must have passed all required courses and examinations of the College of medicine. The last two years of work must have been taken in residence. 5. He must have written an acceptable paper on an examination posed by the Examination Committee at the end of the senior year. 6. He must have written and presented an acceptable, typed senior thesis. 7. He must have discharged all indebtedness to the University of Nebraska.

The University College of Medicine is growing with the addition of a new, \$25 million medical center. This center will include nine buildings when completed. Part of these buildings will be financed by the University and the rest by private firms. This building program will put the University's medical facilities on a par with those of other leading schools in the Midwest.

The degree of Doctor of Medicine cum laude may be conferred upon a student who has made a high scholastic record and who, in addition, has in the course of his medical studies performed some original research that has been published or is in preparation for publication. Such a student must be recommended by the department in which the original work was done. Usually he must stand in the upper 10 per cent of his class.

Alpha Omega Alpha is a medical college honorary society in which membership is based upon scholarship and moral qualifications. Elections are made from the students who have completed nine or more quarters of the four-year medical curriculum and are made by unanimous vote of the active members of the chapter. Not more than one-sixth of any class may be elected to membership.

## Dent Students Practice Drilling in Andrews Hall

Nebraska's College of Dentistry is fully approved by the Council on Dental Education of the American Dental Association and is a member of the American Association of Dental Schools.

Admission to the College is on a selective basis. The choosing of the number admitted is based on the quality of the applicant's work in liberal arts college, his character, his personality and his aptitude for and interest in the study of dentistry.

In recent years, a large percentage of applicants for the College necessitates presenting a pre-dental program that will provide This enables the student to complete his specific pre-dental requirements within a two-year period and if he desires, submit his application to the College of Dentistry at the end of that time. Requirements include 60 semester hours exclusive of physical education and military science. All students are required to take the aptitude tests if applying for admittance.

After receiving a notice of acceptance for admission, the student is required to make a deposit of \$25 which will be applied

as part payment of tuition for the following academic session. It will be forfeited if he fails to register for that session.

Each student who enrolls in the College of Dentistry pays a fee of \$355 each semester which covers the major school expenses for that period.

All required textbooks, dental instruments and materials are loaned for the student's use during his four-year dental training.

Upon completion of the dental course and the conferring of the D.D.S. degree, all textbooks and instruments then become the property of the student.

An honor society of the Dental College is Omicron Kappa Upsilon. Alpha Alpha chapter was chartered at the University of Nebraska in May, 1929. Election to this honor society is based upon scholarship, conduct and date gathered by the faculty and recorded on a character analysis chart.

Degrees that may be received from the Dental College are Doctor of Dental Surgery, Bachelor of Science in Dentistry, and Doctor of Dental Surgery Bachelor of Arts of Bachelor of Science, and Doctor of Dental Surgery Master of Science in Dentistry.

## Nurses' Work Requires 4-Year Study

The University of Nebraska School of Nursing is situated on the College of Medicine campus, located in a residential section of Omaha. The campus covers approximately a four-block area and includes the two-wing University Hospital, two large laboratory buildings and Conkling Hall, the student nurses' residence. Children's Memorial Hospital and the Child Saving Institute adjoin the campus.

The School of Nursing offers to qualified candidates a four-year program leading to the degree of Bachelor of Science in Nursing. This program replaces the three-year program and provides graduates with a Diploma in Nursing as well as the Bachelor of Science degree.

The first year of the degree program may be taken at the University where the freshman courses are geared to the entrance requirements of the School of Nursing. During this time students will learn to study on a collegiate level and make the necessary adjustments.

Self-confidence and mature judgment gained through the basic college courses during the freshman year will lay the foundation on which to build the professional nurse during the next three years at the University School of Nursing.

Since the October of 1917 the University of Nebraska School of Nursing has been doing its part in providing professional training for modern counter-parts of Florence Nightengale, Clara Barton, Edith Cavell, and the countless others who have contributed their lives toward developing nursing from its early characterization as a household art to the very pinnacle of professionalism upon which it stands today.

## Grading System Reveals Standing

The grading system at the University of Nebraska is somewhat different from the grading systems used by most high schools. Instead of the conventional one through five, or its equivalent, "A" through "F" systems, the University has set up its grading system on a one through nine basis.

The following chart represents the percentage and its equivalent grade according to the one through nine system of grading:

9	.....	95%—100%
8	.....	90%—95%
7	.....	85%—90%
6	.....	80%—85%
5	.....	75%—80%
4	.....	70%—75%
3	.....	65%—70%
2	.....	60%—65%
1	.....	Falling

Another aid to students which the University provides is scholastic reports or "down slips" which are issued twice during the semester. Those persons receiving "down slips" at the end of the four or ten weeks period are required to go to their instructors and find out why the "down slip" lead was given and what can be done to rectify it.

If the "down slip" is not removed, 8 p.m. study hours are levied so that additional time may be given the subject causing the trouble. In this way, students with low grades are notified in time to correct the situation.

A student desiring to graduate from the University of Nebraska must have maintained an over-all four average, or above, for four years.