

Nebraska Upsets K-State With 69-59 Win

Showing championship form last night the Nebraska Cornhuskers stunned the Kansas State Wildcats into submission with an impressive 69-59 upset over the visitors.

Kansas State opened the scoring and moved to a 4-0 lead before Stan Matzke began the NU scoring with a ringing jump shot. The Huskers then moved the score to 10-9 before the Wildcats regained the lead 11-10. The lead

then see-sawed back and forth fielders to put the Huskers on top to stay. Nebraska then began pulling away, and increased their margin to 20-13 with nine minutes remaining. K-State began to rally, and brought the score to within four points, 23-19 with five minutes showing in the first half. The Nebraska once again fought back, and moved the lead to eight points 31-23. But not to be denied,

the Wildcats put on a last minute outburst to knot the score at intermission 31-31.

The Kansans opened the second period very quickly with State's Fred Schneider hitting a fielder. But once again the Huskers proved their worth and brought the lead back to 36-35, with Chuck Smith hitting a jump. The Wildcats stayed within range, but with 16:00 left, the Huskers started pulling away for good. Smith and Dunne Buel sparked a Husker rally that moved NU in front by 10, 57-47. Before the guests could once again get moving, the Huskers had pushed the spread of their widest margin, 61-47. Nebraska then padded their lead all the way to 16 points, 69-53, before the Wildcats flurried. The visitors put on a futile rally, and hit six quick points to bring the scoring to its final resting place, 69-59.

For Coach Jerry Bush's quintet, Willard Fagler and Chuck Smith led the scoring. The senior co-captain tallied 18 points, while Smith contributed 14. Buel, playing perhaps the finest floor game of any of the players, tossed in 13 tallies. Ekwall hit 12 and Matzke an even 10.

For the losers, big Roger Craft led the scoring parade. The 6-7 pivot man dumped in 14 points. Schnieder and Pachin Vicens each hit 10. One sad note for "Tex" Winters' crew was the fact that three of his men were on the injured list, two failing to see any action at all. Vicens received a broken nose in the Oklahoma contest, but was able to play. However, Jim Smith and J. R. Snyder were both unable to play because of injuries sustained in the Big Seven tourney at K.C. Nebraska hit a total of 21 field

goals out of 57 shot taken. They were red-hot at the free-throw line, hitting only 20 out of 73. They had 19 out of 29 from the

charity stripe. One deciding factor in the Cornhusker win was the fact that they took 52 rebounds,

goals out of 57 shot taken. They were red-hot at the free-throw line, hitting only 20 out of 73. They had 19 out of 29 from the charity stripe. One deciding factor in the Cornhusker win was the fact that they took 52 rebounds,

The 'Fairer Sex'

Second Semester Plans Call For More Parties

Henceforth I am not to be held responsible for any headlines which appear above my column. You see, I don't write these, knowing abso-

NU Matmen

Wrestlers Open Sked This Week

By HARLAN NODDLE
Sports Staff Writer

The 1955 wrestling season opens Friday night as the Nebraska matmen oppose Mankato State Teachers College at Mankato, Minnesota. From there, the team will travel directly to the University of Minnesota for a match on Saturday.

Wrestling mentor Don Strasheim has high hopes for the season openers, and he is placing the burden of leading the squad on the four returning lettermen. Those returning from last year's crew are: Charles Bryant, Larry Goll, John Crancer and Arnold Morton. Their experience should be a valuable asset as the season progresses.

Besides the four lettermen, eight other wrestlers will be making the trip. Coach Strasheim is relying on them to follow up the experienced matmen. The newcomers to the varsity squad are: Don Beck, Marshall Nelson, Jim Owens, Jerry Stark, Bob Pfann, Garwood Donnellson, Warren Diesendorf and Robert Knappie.

WRESTLING SCHEDULE

January 14	Mankato State Teachers	There
January 15	University of Minnesota	There
January 21	Colorado State Teachers	There
January 22	University of Colorado	There
January 29	Fort Carson, Colorado	There
February 4	University of Iowa	There
February 5	Iowa State Teachers	Here
February 7	South Dakota State	Here
February 11	Kansas State College	Here
February 25	Cornell College	Here
February 26	University of Wisconsin	There
March 3	Iowa State College	Here
March 11 & 12	Big Seven at Boulder	Here
March 25 & 26	N.C.A.A.	Here

Phyl Cast

lutely nil about journalism. Last week they thought they would put Tri Delt in the headlines, not that I don't think they are headline material because believe them me, they are, but far be it from me to be partial.

Named to Convo

These are the officers who will be sent to the Convention in the Spring; Past President, President, Vice President, Secretary, Treasurer, Intramural Coordinator and Assistant Coordinator, providing she is a freshman and if not the freshman holding the highest officer will be sent.

And to start off second semester right, W.A.A. will be having a party at the cabin. However, details are still rather vague but at least you know there is going to be a party in some form or other and you know you can't hardly find them no more.

Ping Pong

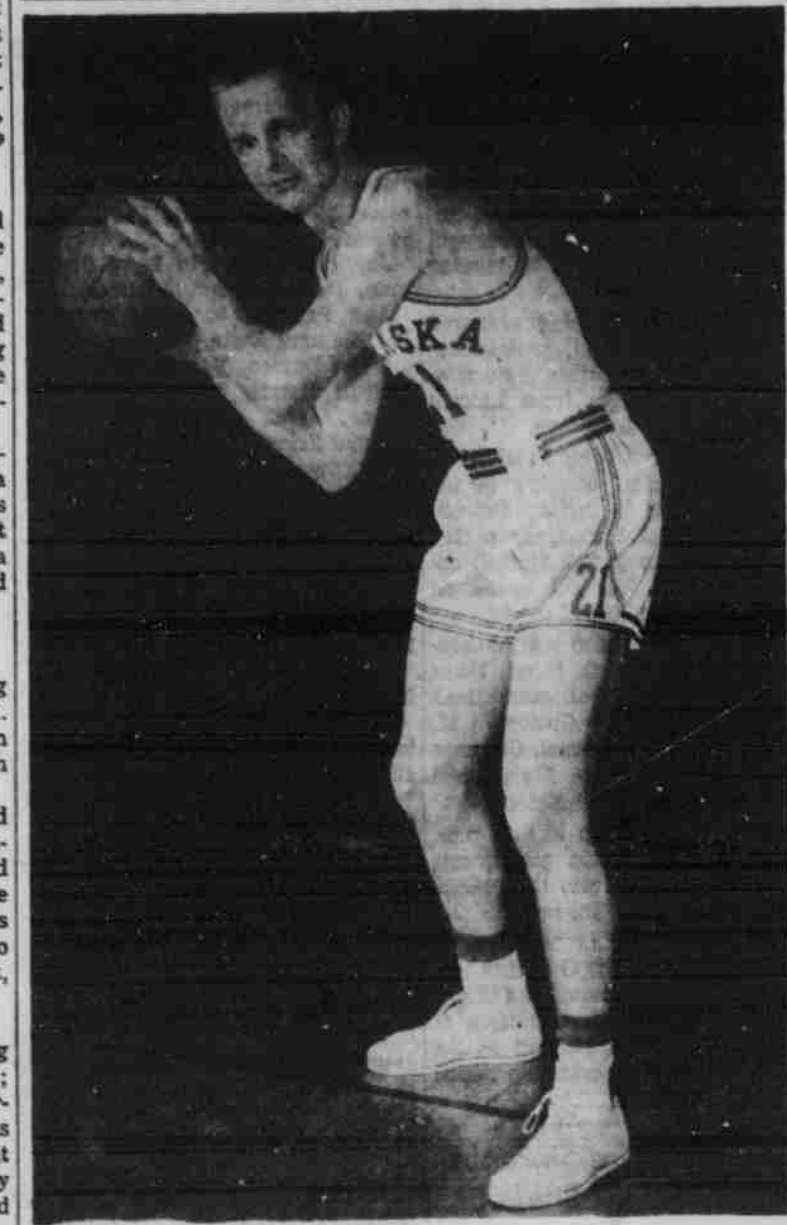
A house representative meeting will be held tomorrow at 5 p.m. to talk about none other than Ping Pong which starts real soon after second semester.

Next week on Wednesday and Thursday night due to a small rather famously renowned thing called Coed Follies tryouts there will be no intramural activity. This means no basketball, no rifle club, no Co-Rec volleyball—Let's face it, no-nothin.

Co-Rec Sked

I get a little tired of writing the same thing here every week; "The Co-Rec schedule for tomorrow night is as follows:" so this week I'm going to fake you out by being rather clever and possibly a wee bit risque and say—hold your breath—Following is the Co-Rec schedule for tomorrow night:

KAPPA ALPHA THETA No. 4 and DELTA TAU DELTA, CHI OMEGA No. 1 and SIGMA CHI, WILSON HALL No. 2 and CORNHUSKER CO-OP, DELTA DELTA DELTA and SIGMA PHI EPSILON, SIGMA DELTA TAU and SIGMA ALPHA MU, KAPPA KAPPA GAMMA and SIGMA DELTA PHI.



Court General

"Whitey" Buel, junior guard ball," Buel adds the necessary from Malcolm, has taken the push to the NU offense. Buel's place of last year's floor leader, favorite shot is a two-handed for the Cornhuskers, Fred Seger set from far out. Despite his relationship "Whitey" has the ability to fore-tively short height of 5'10", see opponent defenses and calls "Whitey" played his usual fine Husker plays. With Coach Jerryhustling game last night against Bush's new style of "motion Kansas State.

We Give **GOLD'S** of Nebraska Use Your **Charga-Plate®** Token

SALE! Starting Wednesday at 9:30 A.M.

Misses'! Juniors'! Half Sizes!

DRESSES

Usually 10.95 to 19.95

2 for \$15

8.95 each

No telephone orders on these dresses, please!

- Rayon print crepes
- Menswear fabrics
- Rayon Taffetas
- Chromespuns
- Printed Taffetas
- Spun rayons
- Wool jerseys
- Rayon crepes
- Rayons failles
- Acrilions

Dresses for every occasion, with slim or flared skirts—smart trim lines with lovely detailing. Dressy styles and casual styles. New choice shades.

GOLD'S Dresses... Second Floor

IM Basketball

Zeta Beta Tau Slams SAM; Delta Tau Delta Cagers Win

A well-balanced Delta Tau Delta intramural basketball team edged the Phi Delt, 44-36. Don Becker led the Phi Delta attack with 13 points. The ATO B team ran over Sigma Alpha Epsilon 46-29; and the Phi Gams, led by Al Daggett's 12 points, smashed the Sig Chis 38-17.

Bill Soelberg's 15 tallies led Theta Xi past Brown Palace 43-18. Larry Camick scored the same for the losers, DU rolled over the Phi Psis 37-27 and NROTC won by forfeit over Delta Sigma Phi.

Beta Sigs Win

Beta Sigma Psi won over Sigma Alpha Mu by a 29-13 score behind Bill Engleklemier's 10 points. Marshall Becker scored the same number for the Sammies.

Dental College overcame the Geologists 30-20 and Andrews B forfeited to Manatt B while the Clippers edged the AGR grads 38-34. McClean lost out to a tough Selleck crew 25-32 and Marv Schofer poured in 23 points to lead Burnett past Gustovson 40-33.

Dick Kleiber led the ATO B team in a 46-27 conquest of the Sig Chis in the only other game which was played last week.

Fairfield Falls

The Phi Delt's forfeited to the Betas, and Burnett B overcame Hitchcock B 41-25, despite Ed Travis' 12 point outburst for the losers. Boucher edged Fairfield 40-37 after coming from behind a 19-21 half time deficit. Jim Wolfe fired in 12 points to lead Boucher while Gary Schmidt scored the same number for Fairfield.

Selleck mowed down Gustovson 35-16, Canfield beat Bessy 50-38, and Gustovson II lost out to Manatt 41-21. Bob Rack scored 20 points in leading DU to a 55-19 conquest of Sigma Nu.

Zeta Beta Tau outscored a hard-fighting Sigma Alpha Mu team in the final period to gain a 29-21 victory. The Sammies had led 13-10 at the half. Sol Stiss scored 14 points for the Sammies, while Doran Jacobs fired in the same number for the ZBTs. Max Kreitman's 8 point outburst was a big asset to the second half drive.

Clippers Reils

The Clippers beat Ag Men's B 51-32, but Ag Men's A team won over the Rustlers 48-19. Roy Woodland scored 15 points as Avery B was edged out by Hitchcock C 41-39. Gene Vosken led Hitchcock with 18 points. Intersarsity won over Methodist 34-26 and Canfield

B beat Manatt B 32-21.

The basketball schedule is as follows:

Wednesday

5:00 PM Court 1—Phi Delta Theta-A vs Beta Theta Pi-A; Court 2—Delta Upsilon-A vs Sigma Nu-A; Ag Coll—Hay Seeds vs Ag Men's-A

6:30 PM Court 1—Sigma Chi-A vs Phi Gamma Delta-A; Court 2—Alpha Gamma Rho-A vs Phi Kappa Psi-A; Court 3—Brown Palace-A vs Sigma Alpha Mu; Ag Coll—Clippers vs Ag Men's-B

7:30 PM Court 1—Sigma Alpha Epsilon-A vs Alpha Tau Omega-A; Court 2—Zeta Beta Tau vs Phi Kappa Phi-A; Court 3—Pioneer Co-op-A vs Acadia; Ag Coll—Rustlers vs AGR Grads

8:30 PM Court 1—Kappa Sigma-

A vs Farm House-A; Court 2—Beta Sigma Psi-A vs Alpha Gamma Sigma-A; Court 3—Norris House vs Delta Sigma Phi; Ag Coll—Cornhusker Co-op-A vs Theta Chi

Thursday

6:00 PM Court 1—Beta Upsilon Mu vs Delta Theta Phi; Court 2—Navy ROTC vs Geologists

7:00 PM Court 1—Phi Epsilon Kappa vs Delta Alpha Phi; Court 2—Bert's Boys vs Delta Scrubs; Court 3—Baptist House vs Intersarsity

8:00 PM Court 1—A. I. A. vs A. I. E. E.; Court 2—Phi Delta Phi vs Delta Sigma Pi; Court 3—Rustlers vs AGR Grads

9:00 P M Court 1—Presby House vs Methodist House; Court 2—Lutheran S. A. vs Newman Club; Court 3—Ag Men-A vs Ag Jokers

IM Cage Standings

League 1-A	
Sigma Alpha Epsilon	3 0
Phi Delta Theta	2 1
Beta Theta Pi	2 1
Delta Tau Delta	2 1
Alpha Tau Omega	2 1
Phi Gamma Delta	0 3
Sigma Chi	0 4
League 2-A	
Sigma Phi Epsilon	4 0
Delta Upsilon	4 0
Sigma Nu	2 2
Phi Kappa Psi	2 2
Alpha Gamma Rho	0 2
Kappa Sigma	0 3
Farm House	0 3
League 3-A	
Theta Xi	3 0
Zeta Beta Tau	3 0
Brown Palace	2 1
Beta Sigma Pi	2 1
Phi Kappa Phi	1 1
Sigma Alpha Mu	0 3
Alpha Gamma Sigma	0 3
League 4-A	
Cornhusker Co-op	3 0
Theta Chi	3 1
Pioneer Co-op	3 1
Tau Kappa Epsilon	2 2
Norris House	1 3
Acadia	1 3
Delta Sigma Phi	0 3
League 5-B	
Alpha Tau Omega-B	4 0
Phi Gamma Delta-B	4 0
Delta Tau Delta-B	3 1
Sigma Chi-B	1 3
Phi Delta Theta-B	1 3
Sigma Alpha Epsilon-B	0 3
League 6-B	
Beta Theta Pi-B	4 0
Phi Kappa Psi-B	4 0
Sigma Phi Epsilon-B	2 2
Delta Upsilon-B	2 2
Kappa Sigma-B	0 3
Alpha Gamma Rho-B	0 3
League 7-B	
Pi Kappa Phi-B	3 0
Theta Xi-B	3 1
Alpha Gamma Sigma-B	2 1
Farm House-B	1 3
Cornhusker Co-op-B	1 3
Beta Sigma Pi-B	1 3
Tau Kappa Epsilon-B	0 3
League 8-Fresh	
Alpha Gamma Rho-C	3 1
Phi Upsilon-C	3 1
Phi Delta Theta-C	3 1
Alpha Tau Omega-C	2 2
Farm House-C	1 3
Sigma Chi-C	1 3
Phi Gamma Delta-C	0 3
Sigma Nu-C	0 3
League 10-Dorm A	
Manatt	2 0

HUGHES COOPERATIVE FELLOWSHIP PROGRAM

for Master of Science Degrees

HOW TO APPLY

A program to assist outstanding individuals in studying for the Master of Science Degree while employed in industry and making contributions to important military work. Open to students who will receive the B.S. degree in Electrical Engineering, Physics or Mechanical Engineering during the coming year, and to members of the Armed Services honorably discharged and holding such B.S. degrees. As many as 100 Fellowships will be awarded each year.

Candidates must meet entrance requirements for advanced study at the University of California at Los Angeles or the University of Southern California. Participants will work full time during the summer in the Hughes Laboratories and 25 hours per week while pursuing a half-time schedule of graduate study at the university.

Salary is commensurate with the individual's ability and experience. Tuition, admission fees and books for university attendance are provided. Provision is made to assist in paying travel and moving expenses from outside Southern California.

For the Hughes Cooperative Fellowship Program: Address all correspondence to the Committee for Graduate Study

University of Southern California University of California at Los Angeles

ENGINEERS

or

PHYSICS GRADUATES

To those interested in advanced academic study while associated with important research and development in industry, Hughes offers two separate practical programs:

HUGHES COOPERATIVE FELLOWSHIP PROGRAM

for Master of Science Degrees

HOW TO APPLY

A program to assist outstanding individuals in studying for the Master of Science Degree while employed in industry and making contributions to important military work. Open to students who will receive the B.S. degree in Electrical Engineering, Physics or Mechanical Engineering during the coming year, and to members of the Armed Services honorably discharged and holding such B.S. degrees. As many as 100 Fellowships will be awarded each year.

Candidates must meet entrance requirements for advanced study at the University of California at Los Angeles or the University of Southern California. Participants will work full time during the summer in the Hughes Laboratories and 25 hours per week while pursuing a half-time schedule of graduate study at the university.

Salary is commensurate with the individual's ability and experience. Tuition, admission fees and books for university attendance are provided. Provision is made to assist in paying travel and moving expenses from outside Southern California.

For the Hughes Cooperative Fellowship Program: Address all correspondence to the Committee for Graduate Study

University of Southern California University of California at Los Angeles

THE HOWARD HUGHES FELLOWSHIPS

in Science and Engineering

HOW TO APPLY

Eligible for these Fellowships are those who have completed one year of graduate study in physics or engineering. Successful candidates must qualify for graduate standing at the California Institute of Technology for study toward the degree of Doctor of Philosophy or post-doctoral work. Fellows may pursue graduate research in the fields of physics or engineering. During summers they will work full time in the Hughes Laboratories in association with scientists and engineers in their fields.

Each appointment is for twelve months and provides a cash award of not less than \$2,000, a salary of not less than \$2,500, and \$1,500 for tuition and research expenses. A suitable adjustment is made when financial responsibilities of the Fellow might otherwise preclude participation in the program. For those coming from outside the Southern California area provision is made for moving and transportation expenses.

for the Howard Hughes Fellowships in Science and Engineering: Address all correspondence to the Howard Hughes Fellowship Committee

California Institute of Technology

HUGHES RESEARCH AND DEVELOPMENT LABORATORIES

Culver City, Los Angeles County, California