

# Martin The Menace Cocky Billy Martin World Series Hero

## Billy Slams Out Twelve Big Hits To Equal World Series Record

**By GARY FRANDSEN**  
Sports Staff Writer

Gerry Coleman, the ex-Marine jet pilot and former Yankee second baseman, has probably abandoned any claims he had to the keystone position after the extra-spectacular performance of spunky Billy Martin, a kid who has more guts than a cat crawling into a doghouse when he's got a bat in his hand.

All is not lost though for the likeable Coleman as he could very likely find a spot waiting for him at shortstop where the tired legs of veteran Phil Rizzuto may be just about ready to call it quits.

Some of the boys say Martin might be shifted to short with Coleman going to second, but it's a pretty good bet that "The Kid" will pen the 1954 campaign at his customary second base station.

For Martin it was a clear-cut indication of great things to come. Billy is the first type of ballplayer who plays every game like the last one and that attitude coupled with his gigantic dose of self-confidence could make him a near replica of his old Cardinal namesake, John "Pepper" Martin of the fabulous Gas House days.

**LIKE PEPPER.** Billy is a give-and-take performer on the diamond. No one ever pushes the Oakland, California, native around without receiving a similar taste at a later date. Jim Piersall and Clint Courtney certainly found that out. As a gloomy Charlie Dresen so truly put it after the rousing ending Monday, "Martin is always figuring ways to beat you. He'll cut you. He'll trip you. He'll knock your brains out if he can. He's that kind of a ballplayer."

Again like Pepper, Billy sparked as a sensational World Series hero. In 1931 it was the old Cardinal who blasted out twelve hits against the Phil-

# Strictly Vann NU Student Rehashes Husker Performances

**By HOWARD VANN**  
Staff Sports Writer

In the past week there were those sports fans who predicted that the Brooklyn Dodgers would win the world series and those that predicted a Nebraska win over Kansas State. In both cases those fans turned out to be wrong.

The Yankee victory in the series was attributed to the ninth inning hit of Billy Martin, but it'll be darned if anyone, including the Nebraska coaching staff, can give an explanation of what happened to the Huskers at Manhattan.

**TWO WEEKS** ago at Illinois, Nebraska was down one touchdown but fought back HARD with some good blocking and tackling to tie and then momentarily go ahead of the fighting Illini.

The team finally pulled out a tie with a team that was rated two touchdowns better than the Huskers. So the element of being behind shouldn't be weighed too heavily.

It was mentioned last week that a team can have a letdown after a superior game the preceding game. True that the Huskers played great ball at Illinois, but there was no reason not to be up for their first conference game, and if not for that reason alone, at least to garner their first win of the season.

**BY THE** third game of the season the Huskers should be in good physical shape barring the many end misfortunes that have plagued Nebraska.

A fan cannot blame the coaching staff for a team's bad showing. This has been said many times and it has it's own's end one's from both sides. No matter how good or how bad a team does, the coaches do their work during the week and when it comes down to the actual playing on Saturday afternoons, it's the players and not the coaches who can set out on the field and actually play the game.

**GOING DOWN**  
**Huskers Skid  
In Grid Poll,  
Rated 79th**

The Paul Williamson system for rating collegiate football teams has Nebraska rated 79th in its weekly poll.

At the grid upsets continue the system finds its prognosticating not as consistent as it had been under the two-division system.

This can easily be shown to be to the advantage of the smaller colleges where manpower is at a premium.

**Other Big Seven** clubs listed are Oklahoma number 12; Missouri number 31; Kansas 62; Kansas State 63; Colorado 64.

Iowa State was not listed in the top 80 clubs under the system's rating technique.

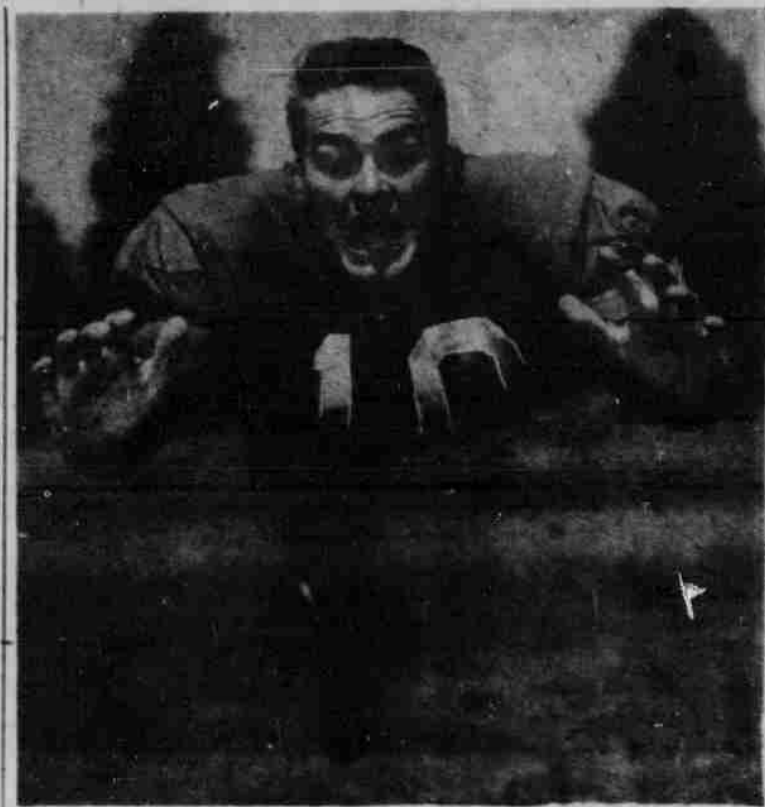
**Uses Nebraskan  
Want Ads**

**COMMON EVERYDAY** sense would tell you that forty or fifty men are not going to like the same men or men with equal affection. But you don't have to be a man to think that he is still a mighty fine coach. Ask anyone who has played football in his lifetime.

What is it that makes the Huskers look like a great ball club against the roughest teams and just downright lousy against the "pushovers"?

**LUCK AND** the breaks play a big part in this question, but the Huskers get their share. They also get their share of fumbles and miscues.

Then is just must be the play-



Courtesy Lincoln Journal

## Strong Boy Max

This big rough-looking character is Max Kitzelman. The junior tackle from Omaha should see plenty of action this weekend as the Scarlet meet the Pitt Panthers. Max, 235-

pounds, is one of Coach Bill Glassford's outstanding defensive giants. The big lad needs more offensive work however.

Milligan also played guard. He lettered three years and joined the Pitt coaching staff upon graduation. He was a member of the Pittsburgh teams that de-

## Favorites Upset

# Delta Upsilon In 25-19 Rout Of Favored Phi Delt Club; Delts Blank Phi Gams; Phi Psi's Also Win In Intramural Play

In the feature game Monday evening the rampaging DU's stomped over a heavily favored Phi Delt hoard 25-19. The Phi Delt on the basis of their 51-0 romp over the Kappa Sigs last week were an almost sure favorite to end up high in the final tabulations at the end of the season.

However, the surprising DU's, who had previously walked by Sigma Chi 26-11, were not to be stopped and threw the League II race wide open besides stamping themselves as the team to beat in their league.

The Phi Psi's scored nine points in the initial period, six in the second, and then roared back for a hot second half to tally 19 in the third and 12 in the fourth periods respectively. The lone Kappa Sig marker came in the first stanza when they blocked a Phi Psi punt into the end zone for a touchdown.

**A STRONG** Tau Kappa Epsilon club dropped their game to a stronger Cornhusker Co-op team 20-13. The losers had previously romped by Delta Sigma Phi 39-2 and were the favorites in League IV.

**THE WINNERS** tallied for 13 markers in the first period and six in both the third and fourth while going scoreless in the second one.

All 19 of the loser's markers came in a big second quarter to lead 19-13 at the halfway mark. However, the DU's stomped out of their stable and held the R-Street boys scoreless the second half.

But the winners quickly disproved this thought by passing over the loser's secondary three times while picking up a safety enroute. The TKE's led 7-6 at the half, but at the three quarter mark the winners led by a slim 8-7 due to their safety.

They then went on to rack up 12 points in the final game to put the game on ice with three minutes to go. The final TKE

**DELTA TAU** Delta, led by captain Marty Mathieson, roared by a hapless Phi Gam team 25-0 for first win of the season. The win brings the Delts mark to 1-1 so far while Phijs own a 0-2 mark each losing to the ATO's and the Sigma Nu's respectively last week.

A mad Phi Psi team overpowered a hapless Kappa Sig team 45-6 to bring their won-loss mark to 1-0 for the young season. The losers who dropped 51-0 to the Phi Delt's last week were completely outclassed and outrun by the impressive winners.

**INTRAMURAL** Free Throw Tournery Is Underway

All interested and eligible students may enter the first round of the Intramural free throw tournament by obtaining a score card and ball from the equipment room at the Men's Physical Education Building.

Qualifying scores for the tournament must be in by October 9. Final elimination play will begin at 5 p.m. October 13th.

A team trophy will be awarded to the organization winning the championship. Also, a medal will be awarded to the individual champion and certificates to finalist and semifinalists.

## Grid Sketches

# Vet Paulson Sodak Gift To Huskers

**Jerry Is Navy  
Bound In June**

**By BOB PESO**  
Sports Staff Writer

Gerald "Jerry" Paulson hails from Dell Rapids, S. D. This ruggedly built senior is sometimes referred to as "Dell Rapids' Most Talked About Citizen."

Paulson has some 198 pounds stacked on his rather short frame. 5-10, however this is the ideal build for a football guard.



Courtesy Lincoln Journal

**JERRY HAS** lettered two years at Nebraska. This season however, he has not seen much action. Now he yearns for his first taste!

Paulson is the president of Delta Tau Delta fraternity, and is a senior in the College of Business Administration.

A recipient of the navy type scholarship, Jerry is longing for the future days as a naval pilot. His older brother is a colonel in the U. S. Airforce.

**POULSON LOOKED** especially good at his running guard position in the early games of last season. Perhaps his best performance was in the opening game with Oregon in 1952. His work on the huge Webfoot end Emery Barnes was outstanding.

Jerry is a hunting enthusiast. He talks about his guns continually. The South Dakota native perhaps is so boasting because he is an excellent natural shot.

# NU Preps For Pitt

## Glasford Seeks Upset Win Over His Alma Mater, U. Of Pittsburgh

Head Football Coach Bill Glassford of the University of Nebraska returns to his alma mater—Pittsburgh—for Homecoming this week end. But Bill goes back to Pitt as an invader rather than as reunion-minded grad.

Glasford's Cornhusker footballers meet the Panthers on Saturday for the first time since 1942. And the game will stir a lot of old memories for the Scarlet mentor and Line Coach Walter "Mike" Milligan, another Pitt alumnus.

**GLASSFORD WAS** an All-America guard there in his senior year, 1936. He captained the great Pitt eleven that defeated Washington 21-0 in the Rose Bowl on Jan. 1, 1937. He played against the Huskers in 1934, 1935 and 1936, the Panthers winning 25-6, 6-0 and 18-8 those years.

Headed Nebraska 12-7, tied the Cornhuskers 0-0 and then whipped the Scarlet and Cream 40-0 in 1929, 1930 and 1931.

This year's Cornhusker team, with two defeats and a tie behind it, is hopeful of brighter days, starting with the Saturday fray.

**GLASSFORD ALREADY** has announced one change he will make—elimination of team-quarter substitution which failed to prove out as the Huskers lost 27-0 in a Big Seven fray with Kansas State last week. Earlier the Cornhuskers lost to Oregon 20-12 and tied Illinois 21-21.

He hinted too, that his starting eleven may be counted upon to go the full 60 minutes at Pitt.

Switches in the Nebraska No. 1 unit also are forthcoming, Glassford said. He added, however, that any changes will not be announced until Wednesday afternoon.

**QUARTERBACK** John Bordogna, Turtle Creek, Pa., kingpin of the Nebraska T attack, tore an arm ligament at Kansas State, but is expected to be ready to go again by Saturday. Bordogna threw 26 passes for 15 completions and 204 yards in the first three encounters.

Left Guard Don Glantz, Central City, who received a neck injury at Manhattan, may not be ready for duty this week. His replacement is likely to be John Machisic, another Turtle Creek, Pa., lad.

The all-time Nebraska-Pitt record gives the Panthers 11 victories to 3 for the Cornhuskers. Three games ended in ties. The record:

| Year | Winner     | Score |
|------|------------|-------|
| 1927 | Nebraska   | 10-0  |
| 1928 | Pittsburgh | 21-13 |
| 1929 | Nebraska   | 40-0  |
| 1930 | Nebraska   | 40-0  |
| 1931 | Nebraska   | 40-0  |
| 1932 | Tie        | 6-6   |
| 1933 | Pittsburgh | 25-0  |
| 1934 | Nebraska   | 18-8  |
| 1935 | Nebraska   | 18-0  |
| 1936 | Nebraska   | 18-12 |
| 1937 | Nebraska   | 21-0  |
| 1938 | Nebraska   | 14-7  |
| 1939 | Pittsburgh | 6-0   |

| Team         | TC | YG  | YL | Net | Ave. |
|--------------|----|-----|----|-----|------|
| Kortnek      | 23 | 178 | 6  | 172 | 6.9  |
| Smith        | 11 | 58  | 8  | 50  | 4.5  |
| Edwards      | 2  | 8   | 0  | 8   | 4.0  |
| Holmes       | 1  | 11  | 0  | 11  | 2.7  |
| Flucher      | 29 | 182 | 20 | 162 | 5.4  |
| Bordogna     | 19 | 67  | 17 | 50  | 2.6  |
| McWilliams   | 9  | 24  | 14 | 10  | 1.1  |
| Yelster      | 10 | 24  | 2  | 22  | 2.2  |
| Novak        | 9  | 19  | 4  | 15  | 1.7  |
| Brown        | 4  | 2   | 5  | 4   | 1.0  |
| Red pass 1/2 | 1  | 2   | 29 | 29  | 2.9  |

| Team      | TC  | YG  | YL  | Net | TD  |
|-----------|-----|-----|-----|-----|-----|
| Nebraska  | 122 | 566 | 110 | 456 | 2.4 |
| Opponents | 147 | 843 | 60  | 783 | 5.3 |

| Team      | TC | YG | YL  | Net | TD    |
|-----------|----|----|-----|-----|-------|
| Nebraska  | 26 | 15 | 277 | 262 | 0 0 0 |
| Opponents | 2  | 0  | 400 | 400 | 0 0 0 |

| Team      | TC | YG | YL  | Net | TD    |
|-----------|----|----|-----|-----|-------|
| Nebraska  | 24 | 20 | 256 | 236 | 2 2 2 |
| Opponents | 12 | 10 | 169 | 159 | 2 1 1 |

| Team      | TC | YG | YL | Net | TD    |
|-----------|----|----|----|-----|-------|
| Nebraska  | 2  | 1  | 12 | 11  | 0 0 0 |
| Opponents | 2  | 1  | 12 | 11  | 0 0 0 |

| Team      | TC | YG | YL | Net | TD    |
|-----------|----|----|----|-----|-------|
| Nebraska  | 2  | 1  | 12 | 11  | 0 0 0 |
| Opponents | 2  | 1  | 12 | 11  | 0 0 0 |

**OTHER SCORES** around the circuit: Beta Theta Pi, 18; Beta Sigma Psi, 0; Pi Kappa Phi, 18; Theta Chi, 0; Nebraska Co-op, 7; Delta Sigma Phi, 0; Farmhouse, 2; Acadia, 0; Theta Xi, 2; Delta Sigma Pi, 0; Pioneer House, 2; Brown Palace, 0.

# O.U. Against Texas Will Be Televised

Big Seven football action slows in respect to conference tussles this week, but the grid action with non-conference foes will be hot and heavy this weekend.

The crippled Missouri Tigers meet a tough foe in Southern Methodist. In 10 meetings between the two schools, Missouri has only two victories and a tie.

**THE TIGERS** may have to field a makeshift backfield for the Saturday night tilt in Dallas. Backs Ed Merrifield, regular right halfback, Tony Scardino, quarterback and Jerry Schoonmaker, number two left halfbacks were injured in last week's win over Colorado. They may possibly seek action however.

Colorado meanwhile tangles with the Kansas Jayhawks. The Jayhawks should be in top form for this one. Kansas came through its game with Iowa State with only minor bruises. Frank Cindrich rejoins the squad for this game.

**OKLAHOMA PLAYS** its third straight non-conference foe Texas, at Dallas. Kansas State meets Iowa State in the other conference tilt.

Oklahoma's Coach Bud Wilkinson isn't too optimistic about his team's chances against Texas. The Sooner coach did say his club was getting better all the time. Oklahoma tied Pitt 7-7, last week.

**Main Feature Clock**  
Varsity: "A Lion Is In The Streets," 1:36, 3:35, 5:34, 7:33, 9:32.

**Varsity** New From The Best Seller That Roared With Enthusiasm!

**JAMES CAGNEY**  
**A LION IS IN THE STREETS**  
Color by Technicolor  
BARBARA HALE ANNE FRANCIS

**Big Money On Campus**  
Sell CHRISTMAS CARDS in Spare Time  
Make hundreds of dollars, in just a few weeks, this easy way. YOU can do it—on campus, in town, wherever you go! You don't need any selling experience.

**HURRY! NOW'S THE TIME TO EARN!**  
Everybody buys Christmas Cards NOW. Friends, townspeople, merchants will gladly buy from YOU when you simply show excitingly different COLOR PHOTO Personalized Christmas Cards. You make \$1.50 profit per card! 15¢ other fast-sellers pay you more money: big value Assortments, Name-Imprinted Cards, GLO-IN-THE-DARK Ornaments, MAGIC LEAF Candles, Gift Sets at price for your outfit of Assortments on approval and other samples FREE. Buy hurry!

**RUSH COUPON FOR SAMPLES!**  
WEST CARD CO., Dept. 117-6  
2113 Washington Ave., St. Louis 1, Mo.  
Please rush money-making outfit of Assortments on approval and other samples FREE.  
Name.....  
Address.....  
City..... State.....

**Everyone is Talking About It**  
**B. D. O. C.**

**from Miller's CAREER SHOP**  
Shop Daily 9:30 to 5:30  
Thursday 10 to 8:30

**A Click on the Campus  
SUEDE-CLOTH JACKET**  
only 17<sup>95</sup>

Here with Miracle Milium Lining—the neat, trimly-tailored jacket by Young Timers. Note the clever stitched detailing that highlights the yoke and slant pockets. This jacket isn't confined to campus... it's seen on casual dates everywhere. In red, turquoise, or cinnamon; sizes 9 to 15.

**MILLER Career SHOP PAINE**