

# Huskies—Giant-Killers Or Hitting Road Back?

Glenn Nelson

## From The Sidelines

Coach Harry Good's well-balanced Nebraska basketball team, which pulled a surprise win over the Colorado Buffaloes Monday night at Boulder, would not shock too many of the experts next Monday by defeating last year's NCAA champion club, Kansas University.



The Jayhawks will no doubt be picked a slight favorite to subdue the Huskers, but if the NU team can hit the pace displayed on the Buffs' home court, they should have several more Big Seven wins to their credit before the final tabulation of the standings. In fact, we're picking Nebraska to land a second or third place in the league. Perhaps a prediction for the Huskers to finish in the runner-up position seems over-confident. But when you consider the team's balance and scoring power which has been displayed in several tough games, it's easy to see that Nebraska possesses the capabilities of clinching an upper division slot. All five starters—Fred Seger, Joe Good, Bob Johnson, Willard Fagler and Don Weber—plus first line substitutes Jerry Sandbulte and Stan Mateke have proved their ability to score ten or

more points on any given night. The Nebraska scoring column consistently lists four or more men scoring ten or more points—a fine showing of valuable team balance.

### Huskies Perform

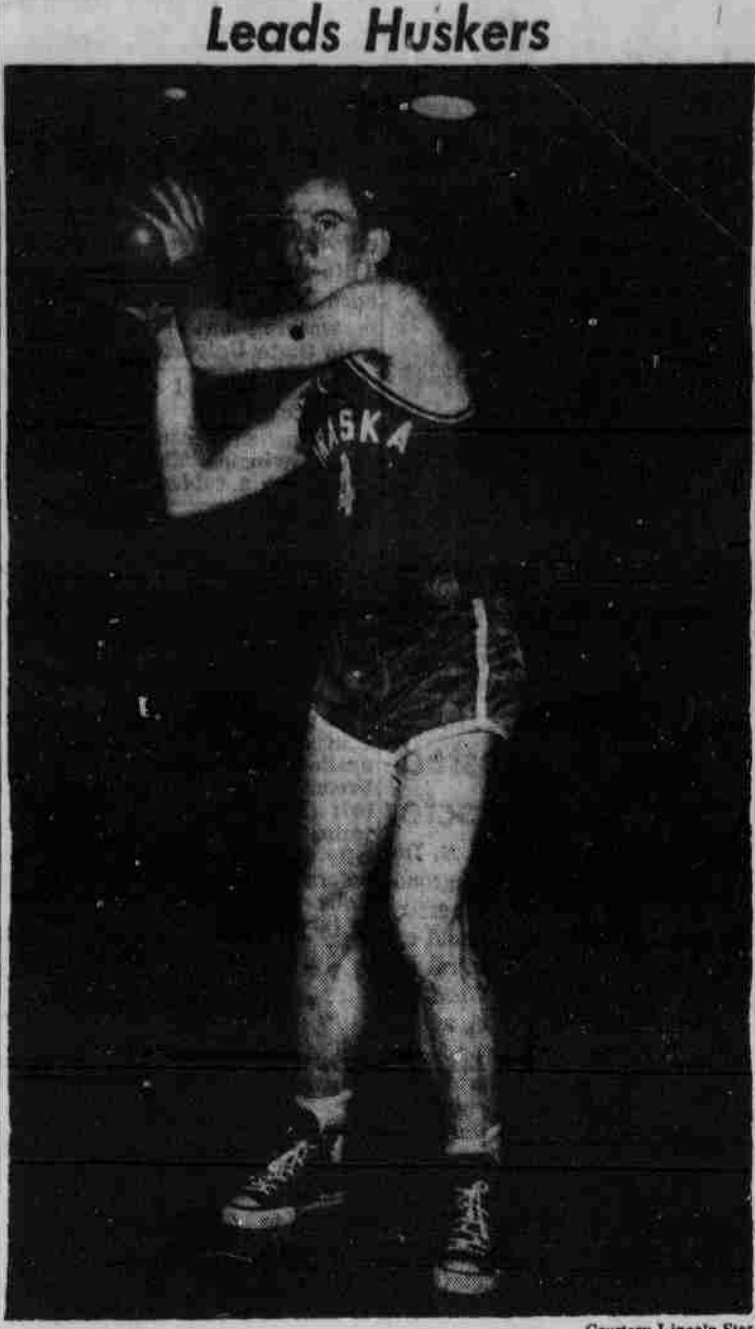
Three Husker athletes performed creditably in bowl sports events during the holidays. Bob Reynolds and Ed Husmann, two of Coach Bill Glassford's senior griders, were both awarded starting positions on the West team which dropped a 21-20 Shrine game in the East-West classic at San Francisco.

Reynolds, who started at offensive halfback, booted two extra points as well as carrying the mail nine times for 25 yards and snatching three passes. Husmann, who started at defensive guard for the West team and later switched to line-backer, was singled out as a defensive standout for the contest.

Reynolds' first try for a conversion was blocked by Pitt's Billy Reynolds.

In the Sugar Bowl, Hobe Jones placed a close second in the mile run at the New Orleans carnival. Winning time was 4:17.2.

Jones, who just returned from the Air Force after a tour of active duty with the AF reserves, will return to the NU track squad when the outdoor track season begins.



## Leads Huskers

Courtesy Lincoln Star  
SHARP AT CHARITY LINE . . . Gerry Sandbulte, reserve Husker guard, poured twenty points through the hoop to lead his mates to an 80-65 upset win over Colorado at Boulder, Monday. The sharp-shooting sophomore meshed four fielders and hit an amazing 12 of 14 tosses at the free throw line to amass his total.

## IM Scoreboard

Fraternity "A"		Fraternity "B"	
Big Eps 31	Sigma Chi 23	Sigma Chi 36	Sigma Nu 28
Phi Psi 42	Kappa Sig 22	Betas 39	Pioneer House 16
Alpha Tau Omega 53	Sigma Nu 19	Farm House 1 (Portlet)	Brews Palace 0
Phi Delta 37	Theta Xi 33	Independents	
(overtime)		Navy ROTC 61	AIEE 33
Betas 55	Alpha Gamma Rho 36	Phi Delta Phi 27	Delta Sigma Pi 26
Big Alphas 22	Delta Tau Delta 19	Panthers 42	Cedars 19
eta Beta Tau 26	Norris House 23	Healy Manor 39	Robbers 32
		Soph Dents 42	ASCE 17
		M-Street 1 (Portlet)	Dora Comets 0

## Wildcats Again Lead AP Collegiate Cage Ratings

For the second week in a row, Kansas State was placed in the top spot in nation-wide basketball ratings.

The Big Seven's only representative in the top 20 widened its lead in the Associated Press poll, pulling away from runner-up Seton Hall to take the No. 1 post in the peculiarly ranked race.

1. Kansas State (7-1)
2. Seton Hall (13-0)
3. LaSalle (11-1)
4. Illinois (5-1)
5. Oklahoma A & M (10-1)
6. Washington (9-1)
7. Indiana (4-2)
8. Fordham (9-0)
9. N. Carolina St. (12-12)
10. W. Kentucky (9-2)
11. Louisiana St. (7-1)
12. So. California (10-1)
13. Notre Dame (7-1)
14. Holy Cross (5-2)
15. Navy (6-0)
16. Seattle (9-2)
17. Tulsa (9-2)
18. Idaho (6-4)
19. Minnesota (5-2)
20. California (5-4)

## Husker Hurdles



HERE MONDAY . . . Two reasons that the University of Kansas cage squad will provide a big hurdle for the winning Cornhusker quintet are Jayhawk captain, Dean Kelly, guard, and Larry Dav-enport, speedy forward. Nebraska will be out to revenge a defeat at the hands of Kansas in the opening round of the Big Seven Tourney during the holidays when the two teams tangle on the Coliseum mat next Monday night.

Two members of Missouri's current basketball squad have played in the Murray, Kent. North-South High School All-Star Basketball Game. Gene Landolt, Bonne Terre, played for the South in 1949, and Puxico's Win Wilfong played for the same team in 1951.

**Half Price**  
Boxed Stationery  
Goldenrod Stationery Store  
215 North 14th St.

**QUICK RESULTS**  
WHEN YOU USE  
*Daily Nebraskan*  
**Classified Ads**

To place a classified ad

- Stop in the Business Office Room 20 Student Union
- Call 2-7631 Ext. 4226 for Classified Service

Hours 1-4:30 Mon. thru Fri.

**THRIFTY AD RATES**

No. words	1 day	2 days	3 days	4 days	1 week
1-10	\$.40	\$.65	\$.85	1.00	\$1.30
11-15	.50	.80	1.05	1.25	1.45
16-30	.80	.95	1.25	1.50	1.70
31-25	.70	1.10	1.45	1.75	1.95
26-30	.80	1.25	1.55	2.00	2.20

**LOST AND FOUND**  
LOST—Horn rimmed ladies' glasses in brown case. Around Coliseum. 3-6000.  
**FOR SALE**  
44 long Tuxedo, good condition, reasonable. Mrs. J. Chesen. 2900 Wooddale. Call 3-6665.  
MINI-OGRAPH MACHINE—Excellent condition. Price \$25. Phone 3297—University Extension.

**ROOMS FOR RENT**  
544 S. 25—University men. Block bus. 2-2295  
**WANTED TYPING**  
Typing done—Thesis, Term Papers, Etc. Call 6-6717.  
For Best Results Use Your Daily Nebraskan Classified Ads

**MAGEE'S**

**Sale!**

Hughes cooperative plan for

**MASTER OF SCIENCE DEGREES**

Our Entire Fall and Winter Stock!  
**Formal Gowns**  
**1/4 AND 1/2 REDUCTIONS**

Now . . . when you want a new formal for all the gay Winter parties . . . now, comes this great big sale! Our entire Fall and Winter formal collection is included! Choose a full-length or ballerina gown in your favorite color and fabric. Many are bare-top modes with cover-up jackets or smart stoles. All sizes. Don't miss these very exciting bargains! Regularly 16.95 to 69.95.

**NOW 11.48 to 52.46**

**Smart Winter Coats**  
**1/4 AND 1/2 REDUCTIONS**

Choose from fur-trimmed or untrimmed styles . . . all of the finest pure woolen fabrics in new textured weaves. Many untrimmed styles have wool-zip in linings or Millum metal-insulated linings. All colors in all styles in all sizes. Select your winter coat today and save! Reg. \$35 to 169.95.

**NOW 24.98 to 127.46**

Fashions . . . MAGEE'S Third Floor

# Sig Eps Defeat Sigs; Phi Psi's Undefeated

By BILL MUNDELL  
Intramural Sports Columnist

The Intramural basketball wars picked up where they left off Monday night with 16 contests reaching completion. Top action of the day were struggles between unbeaten Sigma Chi and Sigma Phi Epsilon and all-victorious Phi Kappa Psi and Kappa Sigma.

Top-ranked and winner of three straight outings, Sigma Chi saw their dream of a perfect season shattered by undefeated Sigma Phi Epsilon by a 31-25 tally. The Sigs had garnered the top position in the pre-holiday ratings while the Sig Eps were unrated in the All-U standings.

A contender for the past two years, but never a champion, the Sig Eps appear to be able to do at least as well this season. The winners controlled the game most of the way, although the favorites were never out of the battle. Pat Mallette netted ten counters for the winners to lead the way while Al Hansen contributed another eight. Ben Leonard topped the Sig effort with one point.

### Kappa Sigs Stumble

A poor second quarter and second-ranked Phi Kappa Psi handed Kappa Sigma its first defeat in three starts 42-29. After keeping pace with the high-flying Phi Psi's during the first stanza, the Kappa Sigs found their offensive might stunted and throughout the next two periods watched the difference in score build up. Another equal fourth quarter kept the margin constant, but was no help in overtaking the victors.

Jerry Anderson of the winners led all scorers with a 13-point effort while brother Larry added ten more. Ed Berg topped the Kappa Sig effort with 12 points and John Gibbons posted another ten. The victories gave the Sig Eps and Phi Psi's undisputed possession of first place in leagues I and II, respectively. Third-ranked Alpha Tau Omega found no competition from lowly Sigma Nu and galloped to a 55-19 victory, their second in three starts. The Taus jumped to a 9-4 first quarter margin, increased it to 23-8 at halftime and coasted in to the win. Fifteen counters by Dave Jones and 14 by Al Blessing were the big totals for the winners. Steve Sutton led the Nu's with six.

Theta Xi's sixth-ranked two-man team found the going tough against five men and suffered its second loss in three starts to unrated Phi Delta Theta, 37-35 in overtime. It was the third Phi Delt win in four outings.

Nich Thorson and Bill Soelberg notched every point for the Xi's in their heart-breaking loss, Thorson getting 24 counters. The winners took an early lead and maintained until the final

minute of play. Quarter scores saw the Phi Dels on top by 15-12, 21-15 and 29-21.

Thorson was the story in the final chucker. The big TX forward poured nine tallies through the nets, including a two-pointer just before the final buzzer that tied the count at 33-all.

Phi Delt Jim Cederdahl boosted the winners to a two-point bulge in the overtime play with a jump shot, but big Thorson sent a swisher through the nets from the circle that knotted the tally once again.

Joe Carter assumed the hero's role in the waning moments of the contest with a medium length over-the-head toss and the Phi Dels had their margin of victory. Lou Roper topped the winners scoring with 13 points while Dick Beechner and Carter contributed six.

### Tennis Aspirants

There will be a meeting for all Varsity and Freshmen tennis aspirants this Friday, Jan. 9, according to NU tennis coach, Ed Higginbotham. It will be a short, but important meeting and is scheduled for 5 p.m. in room 114, Physical Education Building.

Another overtime fray featured the Independent card Monday. Phi Delta Phi fought uphill all the way in the final stanza and finally knotted the count with Delta Sigma Pi at 25-25. Ed Carter featured the eleventh-hour outburst for the lawyers with eight tallies.

Three free-tosses contributed the scoring in the extra three minutes. Carter sunk two in a row to push the shysters ahead 27-25, but with 35 seconds remaining, Phil Reland counted on one of his two tries to narrow the gap to one point. Furious action in the waning seconds produced no more tallies and the Fiddle dee-ees had won a 27-26 contest. The Delta Pi's led throughout the game until the last few seconds. They owned margins at the rest periods of 4-2, 16-7 and 23-11 but couldn't hold on. Carter and Bill Heim of the losers led the game's scoring with 12 counters apiece.

Navy ROTC won its third straight contest by crushing AIEE, 61-33. After a slow first stanza, that saw the Middies leading by only a 5-2 margin, the winners went on the rampage to keep the lead in league XIV.

Verone Gibb turned in the top individual performance of the year for the Gobs with 29 points in the romp. Jack Flynn and Bob Peters followed with 14 and 12, respectively. Bob Brittin topped the Engineers efforts with 13 counters.

Beta Theta Pi climbed into third place in league II and pushed

Alpha Gamma Rho into the cellar by winning their Monday affair, 55-30. The Betas were ahead at every turn as they won their second game in three tries.

Tom Harrington with 18 and Mike Stubbs with 16 featured the Beta attack. Bob Hansen led the Aggies with nine tallies.

### Sig Alphas Win

Defending All-University champion Sigma Alpha Epsilon, kept in a third-place tie in league I by taking a sluggish 22-19 affair from Delta Tau Delta. The loss dropped the Dels into fifth place.

Ted Forke kept the champs above water all the way through and led the game's scoring with ten. Keith Skalla and Bert Sample garnered four each for the losing Dels.

Zeta Beta Tau cut loose with a mighty 17-point outburst in the fourth quarter of its contest with Norris House and captured a 36-23 victory. Until that final ten minutes, the Zetas were either behind or just barely ahead with the Norris youngsters.

The losers held a 7-2 first-quarter lead but saw it evaporate the next period as the Zetas climbed to a 14-13 halftime margin. It was Norris House again in the third chucker, 21-20, but only two points in that fatal fourth while the winners were running wild and led them to their third straight defeat.

Arley Bondarin with 12 counters and Doran Jacobs with 11 were the point-getters for the winners while Gordon Henke grabbed seven for the Norris. Sigma Chi "B" climbed into a tie for first in league V by winning its third straight outing, a 36-28 victory over Sigma Nu "B". Larry Gallion of the Sig Bees led the individual performers with 15 pointers while Bud John and Bill Black of the Nu's tallied 12 and ten, respectively.

### Main Feature Clock

(Schedules Furnished by Theaters)  
Varsity: "April in Paris," 1:09, 3:14, 5:19, 7:24, 9:29.  
State: "Tarzan's Savage Fury," 1:16, 4:05, 6:54, 9:43. "Arctic Flight," 2:36, 5:25, 8:14.

**VARSITY**

NOW

**DORIS DAY**  
in  
**"April in Paris"**

**STATE**

2-HITS-2  
**"Tarzan's Savage Fury"**  
and  
**"Arctic Flight"**

DOORS OPEN DAILY 12:45 p.m.

**TO ASSIST** outstanding graduates in obtaining their Master of Science Degrees while employed in industry and making significant contributions to important military work.

**Eligibility** June 1953 college graduates and members of the armed services being honorably discharged prior to September, 1953, holding degrees in the following fields:  
ELECTRICAL ENGINEERING  
PHYSICS  
MECHANICAL ENGINEERING

Those chosen to participate in this plan will be from the upper portion of their graduating classes and will have evidenced outstanding ability. They must also have displayed some degree of creative ability and possess personality traits enabling them to work well with others.

**Citizenship** Applicants must be United States citizens, and awards will be contingent upon obtaining appropriate security clearance, as work at the Hughes Research and Development Laboratories may be related to National Defense projects.

**Universities** Candidates for Master of Science Degrees must meet the entrance requirements for advanced study at the University of California at Los Angeles or the University of Southern California.

**Program** Under this Cooperative Plan, commencing June 1953, participants will follow this schedule of employment at Hughes:  
FULL TIME—from June, 1953 to Sept., 1953.  
HALF TIME—from Sept., 1953 to June, 1954.  
FULL TIME—from June, 1954 to Sept., 1954.  
HALF TIME—from Sept., 1954 to June, 1955.  
Recipients will earn five-eighths of a normal salary each year and attend a university half time during regular sessions working on their Master's Degree.

The salary will be commensurate with the individual's ability and experience, and will reflect the average in the electronics industry. Salary growth will be on the same basis as for full-time members of the engineering staff. In addition, the individuals will be eligible for health, accident, and life insurance benefits, as well as other benefits accruing to full-time members.

For those residing outside of the Southern California area, actual travel and moving expenses will be allowed up to ten per cent of the full starting annual salary.

Tuition, admission fee, and required books at either the University of California at Los Angeles or the University of Southern California, covering the required number of units necessary to obtain a Master's Degree, will be provided by Hughes Research and Development Laboratories.

Approximately one hundred Cooperative Awards are made each year, if sufficient qualified candidates present themselves.

Candidates will be selected by the Committee for Graduate Study of the Hughes Research and Development Laboratories.

Application forms should be obtained prior to February 15, 1953. Completed applications accompanied by up-to-date grade transcripts must be returned not later than February 28, 1953. Selections will be made during the month of March.

Address correspondence to  
**COMMITTEE FOR GRADUATE STUDY**

**HUGHES**  
RESEARCH  
AND DEVELOPMENT  
LABORATORIES

Culver City, Los Angeles County, California