

DYING GRANDMOTHERS

Students Use Many Excuses To Register Early—Hoover

"So many grandmothers die in Podunk Center during registration weeks, I can't see how all the morticians keep up with the times," quoted Dr. Floyd Hoover, acting director of registration and records.

Students try to use all types of excuses so they can register early, Hoover said, but this one seems to be the most common.

will prove themselves worthwhile to the student as well as the instructor," he says.

Aggies To Attempt To Identify Baby Pictures Of Classmates

By KATHY RADAKEN Feature Editor Attention all Ag students! Could you identify one of your fellow classmates by looking at his baby picture? Here's your chance to try your skill on the matter—Who knows, you may have unknown talent!

Union to see if your baby picture is posted there. You may have a long nose, mole on your cheek or big bright eyes—be careful, you might be a dead give-away.

Builders Elect Fourteen New Members To Board

Fourteen Builders Board members were elected Wednesday night by the old board members, old and new officers.

These new members are: Jane Calhoun membership chairman; Margery DeLamatre, office manager; Nita Helmstadter Student Directory editor; Sue Brownlee, campus tours chairman; Bob Hasebrook, district chairman; Joy Wachel, parties and conventions chairman; Shirley Hamilton, First Glance editor; Sharon Cook, Scarlet and Cream editor; Shirley Murphy, Special Editor; Wayne Frost, Ag tours chairman; Chuck Beam, Ag publicity chairman; Barbara Raup, Ag parties and conventions chairman and Dale Reynolds, Ag sales chairman.

Proposed By-Laws Student Council Election Rules

Ed. note: The following is a list of the proposed election rules to be included in the by-laws. It is incomplete and probably will undergo certain changes.

'52 Handbook Applicants Due Tuesday, 5 P.M.

Deadline for applications for editor, assistant editor, business manager and photographer for the 1952 Husker Handbook is 5 p.m., Tuesday.

Miss Cook is a sophomore in Teachers college, YWCA cabinet, secretary of Alpha Lambda Delta and member of Alpha Phi. Shirley Murphy is a sophomore in Teachers college, Coed counselor, publicity chairman of Search Week, and member of Sigma Kappa. Frost is a junior in Ag college, Corn Cob Worker, manager editor of the Cornhusker Countryman, and member of Alma Gamma Rho.

Ag Fellowship To Honor Student House Heads

Paul and Harriet Kemling, Ag Student House supervisors for the past two and one-half years, will be honored Sunday at the Ag Interdenominational Youth Fellowship meeting.

Annual Lincoln World Affairs Conference To Discuss U.S. Peace Responsibilities

The theme of the third annual Lincoln Conference on World Affairs, scheduled to begin Friday at 7:45 p.m. in Love Library auditorium, will be "Our Responsibility for World Peace and Freedom."

Guest speakers for the conference will be: Amiya Chakravarty, professor at the University of Kansas, formerly of India; Tibor Kovecs, native of Hungary, who is presently executive editor of the United Nations World; Maynard C. Kreuger, University of Chicago professor; Clyde R. Miller, member of the Institute of Propaganda Analysis and of the Rosenthal foundation; Paul Cadbury, vice president of the Cadbury Chocolate company.

How Other Nations View Our Military Might—Miller. The Impact of American Productive Power—Kreuger. Our Technical Leadership and Point Four—Kovecs. Our Relationships with the Colonial Powers—Chakravarty.

4:30 p.m. Informal tea. 7:45 p.m. How Should a Peace-Loving Nation Behave? The Position of the Military in Domestic and Foreign Affairs—Kreuger. The Internationalization of Education, Science, and Religion—Chakravarty.

Proposed By-Laws Student Council Election Rules

- A. General Elections 1. The elections committee shall have charge of general elections and shall conduct the elections according to the provisions of the Constitution and the By-Laws.

Instructors Emphasize Regular Class Attendance

A survey of 175 University faculty members shows that most instructors place a large amount of importance on regular class attendance.

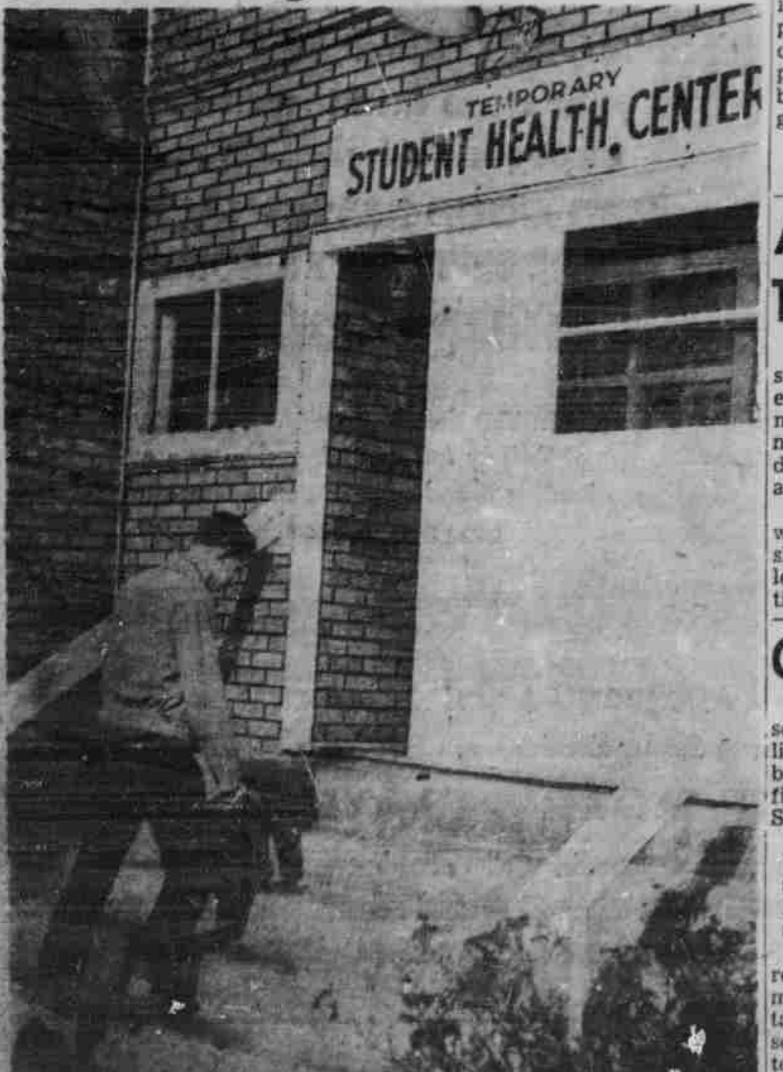
tee of Teachers college, noted a definite correlation between attendance and test grades. Many commented that being present indicates a student's attitude and interest in the subject. Attendance, it was revealed, is especially important in physical education classes, seminars and labs.

M. J. Martin Gets Fleming Scholarship

Marilyn Jo Martin was awarded the Bette Fleming scholarship at the annual alumnae meeting of Zeta chapter of Kappa Phi, national club for Methodist college women.

- Approximately 70 per cent of the professors answering the question, "How much does the final examination count toward the final grade?" indicated that it counts between one-fourth and one-third of the over-all grade. About 12 per cent indicated that it counts very heavily (one-half or more).

End Of Long Trail...



CLIMAX FOR A STUPORED STUDENT... Mid-year has come and gone and left its scars—for Shelly Johnstone. If he can make it up those five steps to Student Health, perhaps another shot of morphine will carry him through the coming semester. His future? ... More mid-year problems next year. What an experience! (Daily Nebraskan Photo.)

Ground Clearing Project Will Continue University Program Of Dorm Expansion

The house moving between 15th and 16th streets is part of the University's program of expansion, according to William C. Harper, Director of Commercial Enterprises and Student Activities.

the priorities for building materials some time after July 1. There is a possibility that construction of the men's dorm's will begin in the fall of 1952.

the dorms might be completed in the fall of 1954. Norris House and one private residence will be moved this summer. The fraternity houses along 16th street will not be disturbed by the expansion program.

Admission Tax Exemptions Now May Apply To University, Student Sponsored Functions

Many University and student sponsored functions may be exempt from the federal tax on admissions according to an announcement by William C. Harper, dean of commercial enterprises and student activities.

Applications are to be filed at Room 201, Administration building. According to the provisions of the federal law the following religious, educational or charitable entertainments will be exempt:

normally have a regular faculty, curriculum and organized student body.

Grade School Art Show Set

Approximately 170,000 grade school pupils in Nebraska's public and parochial schools have been invited to participate in the fifth annual All-State Elementary School Art Exhibit.

drawings. Four pupils who submit exceptional drawings will be awarded \$50 scholarships donated by Miller and Paine to the University All-State high school fine arts course to be held next summer.

C. M. George To Speak At IVCF Meeting Tonight "John Wesley—Knowledge on Fire" will be the subject of a address by the Rev. C. M. George at the Inter-Varsity Christian Fellowship meeting Thursday night.

NU BULLETIN BOARD

- Thursday NUCWA meeting, 7:00 p.m., Union, Parlor 2. Inter-Varsity Christian Fellowship, 7:30 p.m., Room 315, Union.

Students To Decide AUF Beneficiaries

- Students may choose four organizations that they think should receive some of the money contributed to the 1951 All University Fund drive. The following 11 organizations are on the list of approved charities.