

Associated Women Students Set Eleven As Maximum Points For University Activity Coeds Under Recently Revised System

University coeds may carry a maximum of 11 activity points each, according to the revised point system released today by Associated Women Students board.

The system set up by this year's board, headed by Nancy Button, is to be re-evaluated each year as work in the different campus organizations varies. The number of points for some activities may change when the nature of jobs is altered.

Ginny Koehler, chairman of the point system for AWS, announced that an appeal board has been set up to consider cases of over-pointed coeds who wish to carry one or two more than the maximum of 11 points.

Under the new system, several activities are not pointed. Miss Koehler reports that the AWS board did not point honoraries "because their functions and principles are too widely varied, and because they are within colleges."

College Days, according to AWS representatives, is not pointed because it is still in the formation stage. Several board members indicated that it would undoubtedly be pointed next year.

Overpointed coeds have been notified by the AWS board. If they wish to appeal, they must fill out appeal application blanks by Friday, Nov. 16, and return them to AWS drop box in Ellen Smith hall. Blanks may be obtained at Ellen Smith. The first meeting of the appeal board will be Nov. 19 at 5 p.m. at Ellen Smith.

Coeds in activities are urged to read the system and keep track of their own points. A file is kept by AWS point system committee of each coed and the points she is carrying.

Ag Exec. Board	
President	5
Member	2
Ag Y.W.C.A.	
President	8
Vice President	6
Secretary	4
Treasurer	4
District representative	4
Cabinet member	4
All University Fund	
President	8
Vice president	6
Secretary	4

Treasurer	4
Head	3
Assistant	2
Worker	1
Associated Women Students	
President	8
Vice president	7
Board member	4
B. A. B. W.	
President	7
Vice president	4
Social chairman	4
Board	3
Builders (City and Ag)	
President	8
Vice president	6
Secretary	4
Treasurer	5
Board	4
Assistants	2
Cheerleaders and Alternates	
Squad	2
Coed Counselors	
President	8
Vice president	6
Board members	4
Coed Counselor	2
Cornhusker	
Editor	10
Associate editor	9
Managing editor	8
Section heads	5
Layout editor	5
Assistant layout editor	5
Panel editor	3
Assistant panel editor	2
Business manager	10
Assistant business manager	8
Photograph editor	6
Art editor	2
Cornhusker Countryman	
Editor	5
Managing editor	3
Co-Home economic editor	2
Business manager	2
Assistant business manager	2
Circulation	1
Daily Nebraskan	
Editor	10
Associate editor	9
Managing editor	9
News editor	7
Sports editor	9
Ag editor	7
Society editor	4
Assistant sports	6
Feature editor	7
Business manager	10
Assistant business manager	7
Circulation	8
Farmers Fair Board	
Member	2
Home Economic Club	
President	8

Vice president	4
Board members	4
NUCWA	
President	5
Vice president	4
Officers	3
Spring conference	2
Board	2
Organized Houses	
President	3
Panhellenic	
Vice president	2
Residence Halls for Women	
Governor	3
Social chairman	1
Sorority	
President	7
Vice president	6
Secretary	5
Treasurer	4
Pledge trainer	3

Motor corps chairman	4
Bloodmobile chairman	4
Veterans hospital chairman	4
Orphanages chairman	4
Religious Welfare Council	
President	4
Vice president	3
Corresponding secretary	2
Search Week	5
Member	1
Residence Halls for Women	
Social chairman	1
Sorority	
President	7
Vice president	6
Secretary	5
Treasurer	4
Pledge trainer	3

Treasurer	4
Vice president	7
Secretary	6
Member	4
WAA	
President	8
Intramurals chairman	7
Council (vice president included)	4
YWCA	
President	8
Vice president	7
Board member	3
Freshman cabinet	4
District representative	4
Treasurer	6
Assistant treasurer	4
Secretary	5
Student Council	
President	8
Vice president	5
Corresponding secretary	5
Treasurer	4
Committee chairman	4
Recording secretary	3
Member	3
Student Union (City and Ag)	
Board officer	7
Board member	3
Committee chairman and co-chairman	4
Committee members	2
Tassels	
President	8

Only Greyhound -

gives you so **MUCH** for so **LITTLE** cost!

More schedules, more comfort, more convenience are reasons students prefer Greyhound, the friendly way to travel! Go Greyhound on all your trips... holidays home, week ends, big games. Fares are amazingly low—like those below.

CHEYENNE, WYO.	\$10.05
NORTH PLATTE	4.85
OMAHA	1.25
WICHITA, KANS.	5.45
MINNEAPOLIS, MINN.	8.55
DES MOINES	4.30
ST. JOSEPH, MO.	3.00

CHARTER A BUS FOR THE GANG!

GREYHOUND BUS DEPOT
320 South 13
2-7071

STATE

WARNER BROS. PRESENT

"A Streetcar Named Desire"

VIVIAN LEIGH MARLON BRANDO

NOW—MAT. 7:45 Eve. 1:00

Varsity

"The Tanks Are Coming"

Starring Steve COCHRAN Philip CAREY Mari ALDON

Feature At: 1:42, 3:39, 5:36, 7:37, 9:32

THE NEW Esquire

Starts Today

Bernard Shaw's **PYGMALION**

Wendy HILLER Leslie HOWARD

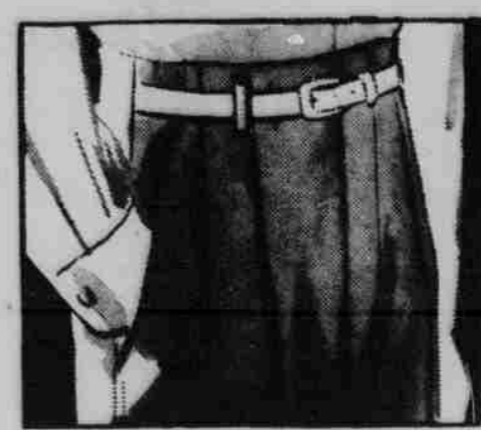
—ADDED—
Disney Cartoon & Musicolor Travel Short

ben Simon's

You Asked for Them!

Pure Wool Grey Flannel Slacks

\$9.95



Extended waistband



Saddle-stitched Seams

This is the same slack that was a sellout last year! The same high quality pure wool flannel, the same high quality tailoring. Walk, run or drive to Simon's today because there are only 200 pairs at this extra special price. Advertised only in the 'Rag' to give you university men first choice. Regular sizes only.

• Simon's Men's Clothing—Second Floor

CRYSTAL BALL CONTEST

Join the Campus Caravan to

EAST HILLS

() NOTRE DAME () MICH. STATE

Dancing Every Saturday Night

POWER AND QUALITY

INHERENT IN BOTH OUR CORNHUSKERS AND THE NEBRASKA BOOK STORE

() BAYLOR () TEXAS

Nebraska BOOK STORE
1135 R St. Lincoln 8, Nebr.

FOR A WINNER

IN THE FIELD OF GOOD EATING

TRY ONE OF OUR DELICIOUS HAMBURGERS

OPEN NIGHTS

() IOWA STATE () NEBRASKA

THE HAMBURGER INN
318 NO. 12 ST.

WIN ONE OF THESE CASH PRIZES

\$500 1st Prize

\$200 2nd Prize

\$100 3rd Prize

RULES

- In each advertisement on this page you will find one football game scheduled for the coming week. Indicate your choice of winner by checking the box next to the team. If you wish to indicate a tie, check both boxes.
- Complete entries must be at the DAILY NEBRASKAN office by 12 o'clock noon this coming Saturday.
- Fill in your name and address in the space allotted. Winner will be announced in next Tuesday's DAILY NEBRASKAN.
- Don't indicate scores, merely winners or ties. Prizes will be awarded to the person who guesses the outcome of the most number of games correctly, and whose entry is received the earliest. Staff members of student publications are not eligible to enter.

Name

Address

WANT ADS— Get Results

PHONE 2-7631

() RICE () ARKANSAS

Better Grades Are Always Assured When Typed on a ROYAL PORTABLE Available at the

NEBRASKA TYPEWRITER CO.
125 N. 11th St. 2-7285
"We give 2-N Green Savings Stamps"

() KENTUCKY () TULANE

SPENCER STEAK HOUSE

Famous for Good Foods

STEAKS AND SEA FOOD SPECIALTY

() SO. CAL. () STANFORD

PARTY ROOM—PRIVATE PARTIES

Smith-Corona

World's first portable...
World's fastest portable!

Easy Payments

() NAVY () MARYLAND

LATSCH Brothers, Inc.
1124-26 O St. Lincoln, Neb. 2-6838