

# Ivy Day Racing Form

## Black Masque Handicap

HORSES	STABLES	TRAINER	ODDS	COMMENTS
Anita Deep	Colossus	No rider	5-1	Born a winner.
Blaze Struck	Triangle Club	Blushing Bride	10-1	Should show on clear day.
Snap-on	Gay Lyle Stables	Giggles	20-1	Trainer overlooked her.
Eddy	Kite Stable	Pressy	1-1	How can she miss?
Boozy	Arrowhead Stable	Circus	7-1	Beggars can't be choosy.
Irish Eyes	Mansuettum	Ricki Girl	7-1	Better chance than some.
Bonnie F.	Memorial Ground	Sleepchase	7-1	Sure bet for Aggies.
Franklin	Arrowhead Stables	Circus	25-1	Needs brown, not brains.
Pag-lee	Gay Lyle Stables	Shant Shirley	5-1	Long legs; fully might place.
Horse Face	Picnic Grounds	No rider	5-1	Lay out the mat and gavel.
Family Circle	Lift Society	No rider	5-1	It's traditional.
Tassel Pup	Anchor Inn	Yell Built	1-1	She has winning ways.
Key's Beauty	White House	Simple Sue	13-1	Dropped by way-side.
Love Nest	Colossus	Shant Shirley	10-1	May be scratched.
Dark Mood	Gay Lyle Stables	Silent Shirley	25-1	Sisters sidetracked her.
Ah Shueks	Baker Shop	No rider	1-1	Lacks experience.
Small Auto	Picnic Grounds	No rider	5-1	Good turf trotter.
Funny Blonde	Triangle Club	Red Jane	25-1	Might show on wet track.
Hubsaps	Anchor Inn	Well Built	4-1	Place reserved for her.
Slembant	White House	Simple Sue	14-1	She's been working out.
Cockey Spaniel	Open Arms Stables	Well Built	10-1	When a snowball melts...
Goof-Off	Anchor Inn	Yell Built	14-1	Overzealous favor male.
Racey	Xue	No rider	1-1	She's the male.
Cough, Cough	Fire Trap	No rider	3-1	May be photo finish.
Friendly Alley	Memorial Grounds	No rider	1-1	Likes bride path better.
Nevrus Anne	White Sward House	Well Built	10-1	Was groomer as yearling.
Country Cousin	Anchor Inn	No rider	1-1	Location may help.
Estimblebaptistmaster	Arrowhead Stables	Circus	1-1	Lacks timing.
Pearshape	Memorial Grounds	Green Light	1-1	Strong retraining.
Wacky	Triangle Club	Blushing Bride	1-1	May be crowded at rail.
Dancer	Mansuettum	Ricki Girl	1-1	
	Fire Trap	No rider	1-1	

## Red Hood Handicap

Lefty Back	Party House	Iceberg	31-1	Off to slow start.
Country Correspondent	Country Home	Whistling Willy	15-1	Good stayer.
Old Smoothy	Canaan Camp	No rider	6-1	Anticipating big day.
Tall Corn	Country Home	Whistling Willy	15-1	Trainer's worked on this one.
Mickey Mouse	Whoopee Stables	Castello	15-1	Needs dry track.
Money Bags	Sparkling Stone Mansion	Muscles	8-1	Win by a length.
Coffee Cup	Flowed Ground	Prexy	5-1	Has a strong kick.
Cager	Stone Fortess	Roger!	5-1	Really back training.
New Thin	Country Home	Whistling Willy	15-1	Favorite with crowd.
Fair Leader	White wash House	No rider	1-1	Best back.
Piano Player	Dirty Underwear	Old Man Mose	40-1	A lot of cheer.
Brew Master	Lovely Ground	Omaha's Pride	8-1	May be seen at wire.
Silent Cy	All Star Stables	Castello	25-1	Late in exit.
Dilligood	Whoopee Stable	Part Avenue	6-1	Hardly needs a rider.
Ricky's Son	Whoopee Stable	Part Avenue	6-1	Brothers overlooked when colt.
Risky	Whoopee Stable	Part Avenue	6-1	Overriding in four time.
Unlon Man	Tepee	No rider	6-1	Thoroughbred strains.
Aggie's Pride	Flowed Ground	Prexy	14-1	Runs fast race.
Hatched	All Star Stables	Little John	100-1	Model colt.
Galfer	Gulding Light Stable	No rider	30-1	Long shot; pays double.
Red Rod	Hood Rod	No rider	20-1	Boxed by stablemates.
Bored	Flowed Ground	Prexy	14-1	Good exercise.
Shantilly	Part Avenue	No rider	1-1	May country home.
Early Bird	Whistling Willy	Roger!	15-1	Won't respond to reins.
Married Man	Country Home	Iceberg	31-1	Leads into won't lobby here.
Soldier Boy	Party House	Iceberg	31-1	It will be hard to break loose.
Bushman	Coro Clubhouse	No rider	2-1	

## Senior Wheels . . . Innocents Society Claims Membership Of Many Scholars, Leaders, Editors

The top scholar in the University's senior class, the chairman of the first annual College Days, the promoters of "Good News," the chairman of New Student Week planning.

The editors of The Daily Nebraskan, Cornhusker, Corn Shucks and the presidents of Builders, Corn Cobs, Kosmet Klub, Interfraternity council, Student Council, Coll-Agr Fun board, Block and Bridge, Red Cross College unit, Theta Nu.

Officers of Student Council, Kosmet Klub, Corn Cobs, Builders, Nebraska Masquers, N club, Gamma Lambda, All University Fun, Student Union board, College Days.

Members of Phi Beta Kappa, Sigma Delta Chi, Alpha Zeta, Tri-K, varsity judging team, Alpha Epsilon Rho, military honoraries, R.O.T.C. band, Teachers College advisory committee, Farmers Fair board and publications board.

In summary, these were the activities of the 1950-51 Innocents, the 13 members of the senior men's honorory.

**Senior Year Work**

Led by President Bob Raun, the Innocents carried on their leadership in campus activities and scholarship during their senior year. Helping to carry on the tradition of Innocent participation were: Vice President Herb Reese, Secretary Dick Kuska, Treasurer Ted Randolph, Sergeant-at-Arms Bob Parker, and Gene Berg, Frank Jacobs, Bruce Kennedy, Jack Wilson, Bob Mosher, Bob Rogers, John Mills and Leon Pfeiffer.

Raun was revealed at Honors convocation as the highest-ranking senior in scholarship. He served as president of the Student Council, chairman of New Student Week, business manager of College Days, "Good News" ticket chairman, Block and Bridge president and as a member of Alpha Zeta and Alpha Gamma Rho.

Reese was a bruising lineman for the Husker's '50 football squad and a champion Big Seven wrestler. On the activities side, he was activities chairman of the Student Union board, junior class president, secretary of N club and a member of Beta Theta Pi. He assisted on College Days and New Student Week.

**Journalist**

Kuska edited the 1951 year-book and headed the College Days parade committee. He served as vice president of Corn Cobs, president of Phi Kappa Psi and was a member of Sigma Delta Chi journalism honorary.

Randolph was business manager of The Daily Nebraskan, business manager of Kosmet Klub, a member of N club and Alpha Tau Omega. He married Miss Burdette Pecha in December.

**Parker** was president of Corn Cobs, a member of R. O. T.C. band, Gamma Lambda and Theta Xi president. He assisted on New Student Week and College Days and helped prepare the new Student Council constitution.

**Berg** was the general chairman of the first College Days weekend, president of University Builders and judiciary chairman of the Student Council. He was on the New Student Week committee, the Teachers College Advisory committee, Sigma Delta Chi, AUF advisory board and Kappa Sigma.

**Jacobs** edited the campus humor magazine, Corn Shucks and acted as director and production manager for the shows of Kosmet Klub, which he served as vice president. He was publicity chairman of Nebraska Masquers and a member of Alpha Epsilon Rho and Zeta Beta Tau.

**Kennedy**, a member of Sigma Delta Chi and Alpha Tau Omega, was the editor of The Daily Nebraskan. He also filled the post of Corn Cobs secretary. Recently married to Miss Betty Green, he is employed on a local newspaper.

**Wilson**, an Agriculture campus senior, served as head of the Coll-Agr Fun board, and was a member of Farmers Fair board, Alpha Zeta and Farm House.

**Red Cross Prexy**

**Mosher** was vice president of the Student Union board, president of the Red Cross college unit and editor of the Student Directory. He is the chairman of Magee's college board and a member of Beta Upsilon.

**Rogers** was treasurer of Corn Cobs, a member of the Student Council judiciary committee, president of Phalanx and an officer of Sigma Nu fraternity.

**Mills** won Pi Beta Kappa honor and served as publicity chairman for Kosmet Klub's "Good News," as president of Theta Nu and Sigma Alpha Epsilon.

**Pfeiffer** headed Kosmet Klub in the show and coeds in the spring show. He served as Builders treasurer, senior member of the Publications board and a member of Kappa Sigma.



**BELL BOTTOM TROUSERS**—The members of Phi Gamma Delta winners of the fraternity division of the 1950 Ivy Day sing, are pictured above. They made their appearance in white sailor pants, navy blue and white striped tee shirts and red sashes at the waist, singing a song that fitted in with the theme of their costume.

**1950 SORORITY SING**—Pictured above are the winners of the 1950 sorority sing, Alpha Xi Delta. Dressed in cottons, the girls sang one of the songs exclusive for their sorority.

### your church

By Julie Bell

**Christian Student Fellowship.** Cotner house, 1237 R street, Overton Turner, jr., pastor. Sunday—CSF picnic at Pioneer park. Bring your friends and meet at First Christian church at 6 p.m. Special games, food and program planned for inspiration under the open sky.

**Emmanuel Campus chapel,** 15th & U, C. W. George, pastor. Sunday—Good News male quartet from Omaha will be featured in the morning worship service at 11 a.m.

**University Episcopal chapel,** Thirteenth and R streets, Jack Sweigart, pastor. Friday—6:45 a.m., morning prayer; 7 a.m., holy communion; 5:30 p.m., evening prayer. Saturday—6:45 a.m., morning prayer; 7 a.m., holy communion; 5:30 p.m., evening prayer. Sunday—9 a.m., holy communion, breakfast following; 10:30 a.m., morning prayer; 11 a.m., The Rite of Holy Confirmation and sermon by Bishop Howard R. Brinker; 5:30 p.m., evening prayer; 6:30 p.m., chapel dinner, reservation list should be signed by Friday; 7:30 p.m., Canterbury club business meeting. Monday—8:45 a.m., morning prayer; 9 a.m., holy communion; 5:30 p.m., evening prayer. Tuesday—6:45 a.m., morning prayer; 7 a.m., holy communion; 5:30 p.m., evening prayer. Wednesday—6:45 a.m., morning prayer; 7 a.m., holy communion; 5:30 p.m., evening prayer; 7 p.m., choir rehearsal. Thursday—no services.

**University Lutheran chapel,** 12th and R street, H. Erick, pastor. Sunday—10:45 a.m., Sunday morning worship, Room 315 Union, sermon topic—"He was received up into Heaven and Sat on the Right Hand of God"; 5:30 p.m., Gamma Delta, Temple building, cost supper and business meeting.

**Lutheran Student association,** 1440 Q street, Alvin M. Petersen, pastor. Friday—8 p.m., Duckpins and lunch, 1440 Q; Lille Ashram at Covenant Cedars, Stromsburg, Neb., on Friday, Saturday, and Sunday. Sunday—9:15 a.m., Bible class, 11 Peter, 1440 Q street. 5:30 p.m., joint Ag and City LSA supper, First Lutheran church; 7:30 p.m., Lutheran student choir home concert, First Lutheran church. Tuesday—5 p.m., chapel, 1440 Q; Wednesday—3 p.m., Bible hour, Philipians. Thursday—3 p.m., Bible Hour, The Church; 6:30 p.m., LSA spring banquet, semi-formal, seniors honored, guest speaker is Rev. Don Helges from Chicago, Executive secretary, student service, National Lutheran council.

**Methodist Student house,** 1417 R street, Richard W. Nutt, pastor. Friday—picnic at Pioneer park; cars will leave at 4, 5 and 6 p.m. Sunday—5:30 p.m., Wesley Fire-side, Ruth Trautman Bonardunt will show pictures on Lake Poinsett. Tuesday—6 p.m., Kappa Phi spring banquet.

**Presbyterian - Congregational,** Presby house, 333 North 14th street, Rex Knowles, pastor. Sunday—5:30-6 p.m., May vespers, service of song, scripture and verse; 5:30-7:30 p.m., Sunday evening forum at Presby house, speaker, Dr. George Bancroft of Wheeler Memorial Presbyterian church, subject—"What is Prayer?"; Monday—6:45 a.m., breakfast; 7 a.m., morning discussion; 7 p.m., vespers; subject—"Loving Christ"; 7:30 p.m., choir.

**Baptist Student house,** 315 No. 15th. Sunday—5 p.m., picnic, Pioneer park, Dick Webb, leader. Thursday, May 10—7:15 p.m., graduate fireside meeting at the home of Mae Tenney, 2918 Clinton street, discussion leader, C. B. Howells.

**Catholic**—Sunday masses, 9 and 11 a.m., parlor XYZ, Union; discussion club Tuesday evening, Room 315, Union, topic—the second stage of the mass as a communal social action.

**Religious Society of Friends** (Quakers), 302 So. 28th street. Sunday—9:45 a.m., meeting for worship; 10:45 a.m.—discussion led by Juanita Beede of the Whittier, Calif., meeting.

## Ag Union Panel Reviews War Effect on Genetical Mutations

War is the major problem of our generation as it has been down through the ages. Only when we have war now, there may be much more serious consequences in the form of genetical mutations.

This was the proposition presented and explained at the internal panel discussion held in the Ag Union Wednesday afternoon. Members of the panel were: Richard Sill, instructor; Arthur Robertson, instructor; Herbert Jehle, ass't professor; and Willard Joedert, graduate student and former instructor, all members of the University Physics department.

Over 50 students joined the discussion on the topic, "Genetics, and Atomic Energy." The final discussion is scheduled for Monday, May 7, at 4:30 p.m., and will look toward "Alternatives to Present Policies."

As introductory material the men explained that the hereditary process is carried out through the operation of genes and chromosomes. Damage or alteration to the genes or chromosomes can result in changed heredity.

In some instances, Sill said, the heredity is changed to such an extent that the individual is unrecognizable or even may die before birth.

Changes in the genes or chromosomes are known as mutations. Some changes have major effects while others only have minor effects on the individual, he said.

Major effects are dominant and minor effects recessive in the genetical make-up, Sill said.

Alternating the genes through atomic radiation whether deliberately or accidentally is a criminal thing to do to the following generation, Jehle said. Present effects of an atomic bomb attack could be hidden, he said, but still passed on to the next generation through the recessive mutations.

In addition to 100,000 Japanese killed or injured by the Hiroshima Atomic bomb explosion, another 100,000 persons are estimated to carry dangerous genetical mutations, according to an article by J. B. S. Haldane, British biologist.

**Passed On Indefinitely**

These mutations can be passed on indefinitely, he stressed. And the closer a person is to the explosion, the more genes will be damaged. Thus, the greater chance for deformity.

It has been shown that if both parents carry damaged genes, 25 per cent of the individuals of the following generations will have something wrong with them, either physically or mentally.

Many problems now stand in the way of sound handling of such dangerous material as Uranium 235, Atomic Energy.

First, Russia lacks genetical studies. They believe that every individual has the same resources. They do not stress inheritance as a factor nearly as important as environment.

Second, part of the problem is moral, according to Dick Sill. If we should augment an atomic war, we would be completely ignoring the future generations.

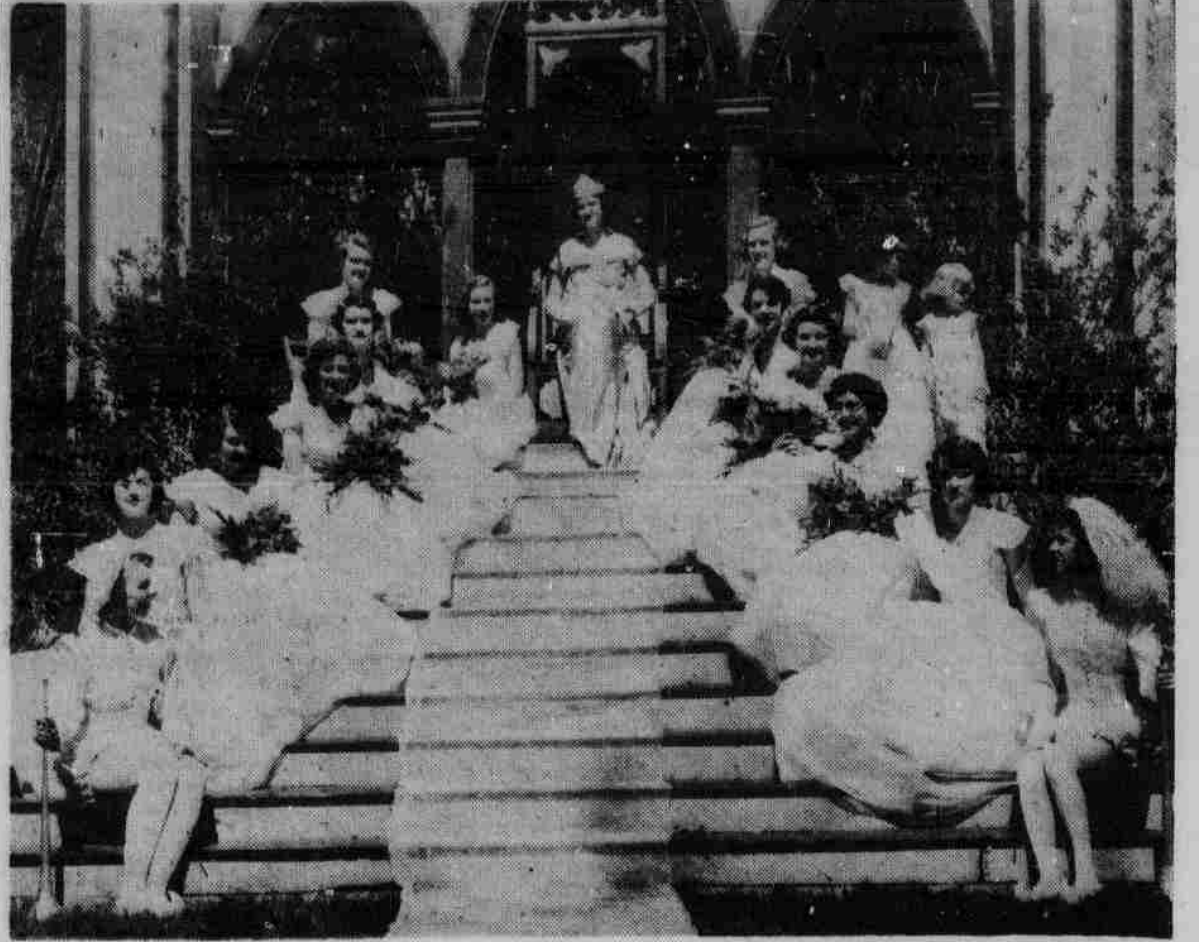
If we are to continue work in radiation, Sill said, we must know something more of it.

**Good Things**

Good things can be accomplished in the laboratory, he said. It may be possible to eliminate disease with radioactive material through the selective process. Another possibility is the use of such material in testing the strength factors of steel.

Experimenting with plants is more prevalent than with animals. It was maintained. The more organized a living thing is, the more unstable it is and therefore the more susceptible to atomic radiation.

Plants are more stable than man. Work is being done by E. F. Frolik at the University experimental farm with the effects of radioactive material on corn.



**ROYALTY REIGNS**—Members of last year's Ivy Day court are: (l. to r.) Mary Hubka, Elizabeth Gass, Peggy Mulvaney, Jo Lisher, Alice Smith, Eleanor Erickson, Mary Mallory, Queen Jan Nutzman, Kay Worcester, Virginia Koch, Kathy Schreiber, Sharon Fritzer, Bev. Smith and Barbara Best.

## Activity Girls . . . Present Mortar Boards Find Careers Ranging From Radio Work to Marriage

Graduation will find the 16 present Mortar Boards, whose reign will come to a close Saturday as they mask new members of the Black Masque, vacating campus offices.

The field of Journalism will claim two Black Masque members. Jean Fenster is the new home editor of the Nebraska Farmer and Colorado Rancher and Norma Chubbuck will be working at the Lincoln State Journal.

Marilyn Campfield and Ginny Guhlin will continue school work, but in reverse circumstances. Both girls plan to teach English in Nebraska high schools or junior highs.

**Career Girls**

Other career girls will be Nancy Porter, Tish Swanson and Mary Chace. Radio work at an Omaha radio station will claim Nancy Porter, president of Mortar Board. Mary Chace will join the training squad for retailing at Macy's Kansas City. Tish Swanson plans to go to New York in the fall to enter a field of merchandising.

Four Black Masque members have already started practicing the art of housekeeping. Mrs. Bruce Kennedy (Betty Green), Mrs. Jack Campbell (Sally Holmes), Mrs. Jack Seizer (Shirley Allen), and Mrs. Davis (Annette Stopkotte).

Joining the ranks of the married set will be four other Mortar Boards. Susi Reed will marry Fritz Simpson, editor of The Daily Nebraskan last fall. Joel Bailey will become an Army wife, Dorothy Bowman and Janet Carr.

Mixing careers with housekeeping are Shirley Allen Seizer and Dorothy Bowman. Mrs. Seizer is a receptionist at an Alliance hospital and Dorothy Bowman will teach home economics at Chambers, Nebr.

**Phi Beta Kappas.**

Four Mortar Board members will wear the Phi Beta Kappa keys. They are Susie Reed, Marilyn Campfield, Joel Bailey and Nancy Porter.

As a group the Black Masques sponsored the Mortar Board Ball and a tea honoring senior women with outstanding scholarship. They assisted at the tea given by Dean of Women and at the Chancellors reception in the fall. Finalist for the Eligible Bachelors were selected by the Mortar Boards. In addition to these activities they supervise all women's elections and are in charge of Ivy Day. Crowning the activities of the Mortar Boards is the selection of new members of the Black Masque order and of the Ivy Day court.

Campus activities of the Mortar Boards were:

Nancy Porter, president of Mortar Board, vice-president of Builders, managing editor of the Cornhusker, Coed Counselor, editor of the calendar for Builders. She is a member of Alpha Lambda Delta (freshman honorary), and Alpha Sigma Rho (radio honorary).

Janet Carr, treasurer of Mortar Board, vice-president of Tassels, Co Counselor board, Student Council, 1950 Ty.

## Women's Sing

- (Continued from Page 1)
10. Kappa Delta: "In My Kappa Delt Garden of Dreams"—Pam Kinne.
11. Kappa Kappa Gamma: "In the Still of the Night"—Phoebie Dempster.
12. Pi Beta Phi: "When Day Is Done"—Nanc Norman.
13. Sigma Kappa: "The Halls of Ivy"—Pat Olson.
14. Residence halls for women: "Be My Love"—Helen Jean Utterback.
15. International house: "Aloha"—Florence Crawford.
16. Love Memorial hall: "In the Still of the Night"—Jean Hargleroad.
17. University hospital nurses: "You'll Never Walk Alone"—Marilyn Maca.
18. Ross Bouton hall: "Will You Remember"—Darlen Ficus.

## Merit System Director Post Open

A competitive examination for the position of Director of the Nebraska Merit System will be held May 26 in the State Capitol.

The State House vacancy occurred after the resignation of Arthur W. Pendray. The Merit System council plans to fill the position by June 1, 1951 through the competitive test.

The examination is open to any person who can meet the minimum qualifications of education and experience. Merit systems regulations provide that "without-in one year prior to his appointment, the Director shall not have served as an employee of any agency except in the capacity of Supervisor of Examinations, or as a member of the Director's staff."

The Director will be chosen from one of the three top persons who make themselves available. Those wishing to take the tests must fill out an official Merit System application form by midnight of May 19, 1951. Forms and other information may be obtained by writing to the Merit System Office, 1306 State Capitol.

## Fraternities Aid Cancer Drive

"Who's got one more car," and "we need a couple more guys," was the cry through numerous fraternity houses Wednesday evening as the men forsook their books to assist the American Cancer society in their Lincoln house to house canvass for donations.

In addition to the efforts of the fellows the Phi Phis stuffed over 30,000 envelopes with advertising sent to boxholders in the Lincoln post office.

The students received no pay for their efforts. All work was volunteered by the fraternities. In order to cover the city without crossing paths the houses

were assigned a definite area to cover. So efficient was the plan that the job was done by 9 p.m. Residents were alerted by the local radio stations to be ready for the workers by leaving a light burning or some other indication that they expected to be solicited.

Fraternities that shared in the drive are: Acacia, Alpha Gamma Rho, Alpha Tau Omega, Beta Theta Pi, Beta Sigma Psi, Delta Sigma Psi, Delta Tau Delta, Delta Upsilon, Farmhouse, Kappa Sigma, Phi Delta Theta, Phi Gamma Del, Phi Kappa Psi, Phi Kappa Phi, Sigma Chi, Sigma Nu, Sigma Phi Epsilon and Theta Xi.