

Football . . .

(Continued from Page 1.)
the end zone three minutes after Thomas scored his touchdown.

The play was set up on some alert play by Oklahoma linemen. Tipps' low kickoff bounced off the chest of Tom Novak and was promptly covered by Dean Smith on Nebraska's 49-yard line.

That man Pearson took over again and advanced the ball to the 34. From this point, his partner Thomas ran to the 15 to set up the touchdown pass.

Sooner reserves accepted the scoring responsibilities in the second half and bettered the mark set by the first stringers in the first.

81-Yard Drive

Leon Heath, first team fullback, climaxed an 81-yard drive in the third quarter with a 40-yard touchdown run through the entire Nebraska team.

Other scoring in the second half was done by Claude Arnold, George Brewer and Dick Heatly.

In the offensive department for Nebraska, Nagle's passes accounted for the most net yardage. He completed five out of 11 aerials for a total of 34 yards. The indestructible Sooner line held Nebraska to 83 yards by rushing, four of which were net since the Huskers lost 79 yards from scrimmage.

Novak and Bauer Shine

Defensively the Huskers performed well against the giant Oklahomans. Art Bauer and Tom Novak again bore the brunt of the defensive chores. Novak, who never quits fighting until the final whistle, left the field bruised and bleeding. Ken Fischer and Ron Clark led the secondary defensive play.

The game was disastrous in more ways than one for the Huskers. Ron Clark and Darwin Salestrom were injured with Clark being carried from the field on a stretcher. He suffered a head injury, but it is believed not to be serious.

After this game many Cornhuskers agree with faithful Oklahoma rooters who think the Sooners to be one of the best teams in the nation.

OKLAHOMA

- LE—Owens, Lockett, Tipps.
- LT—Manley, Weatherall, Horkey.
- LG—Andros, McNabb, F. Smith.
- C—Dowell, Bodenhamer, Moore.
- RG—Mayes, Marcum, Clark.
- RT—Walker, D. Smith, Cole.
- RE—Goard, Anderson, Heape.
- QB—Royal, Arnold, Ewbank.
- LB—Pearson, Jones, Heatly.
- RH—Thomas, Brewer.
- FB—Heath, Lisk, Parker, Lang.

NEBRASKA

- LE—Simon, Damkroger, Magsamen, R. Novak.
- LT—Toogood, Mase.
- LG—Salestrom, Spelman, Means.
- C—Novak, Miller, McGill.
- RG—Bauer, Hawkins, Hoy, DiBlase.
- RT—Goeglein, Reese, Minnick.
- RE—Regier, Busch, B. Schneider.
- QB—Fischer, Nagle, Wiegand.
- LB—Clark, Ferguson.
- RH—Mueller.
- FB—Adduci, Bloom, Mezinnis.

Scoring: Oklahoma touchdowns—Pearson, Thomas, Tipps, Heath, Arnold, Heatly, Brewer. Extra points—Tipps 6 (place-kicks).

Officials: Referee, Louis House (Wm. Jewell), umpire, Barney Snapp (Colorado A & M), field judge, Dick Sklar (Kansas); headlinesman, Ed Flint (Greeley State).

STATISTICS

	Nebr.	Okla.
First downs	6	13
Ball lost	1	1
Yards by rushing	83	465
Yards lost rushing	79	29
Passes attempted	12	7
Passes completed	5	3
Passes intercepted	0	0
Yards gained passing	34	35
Total yardage	38	471
Punts	11	4
Punt average	38	39
Punts returned by	2	30
Kick-off returned by	65	18
Fumbles	1	3
Own fumbles recovered	0	1
Penalty yardage	50	80

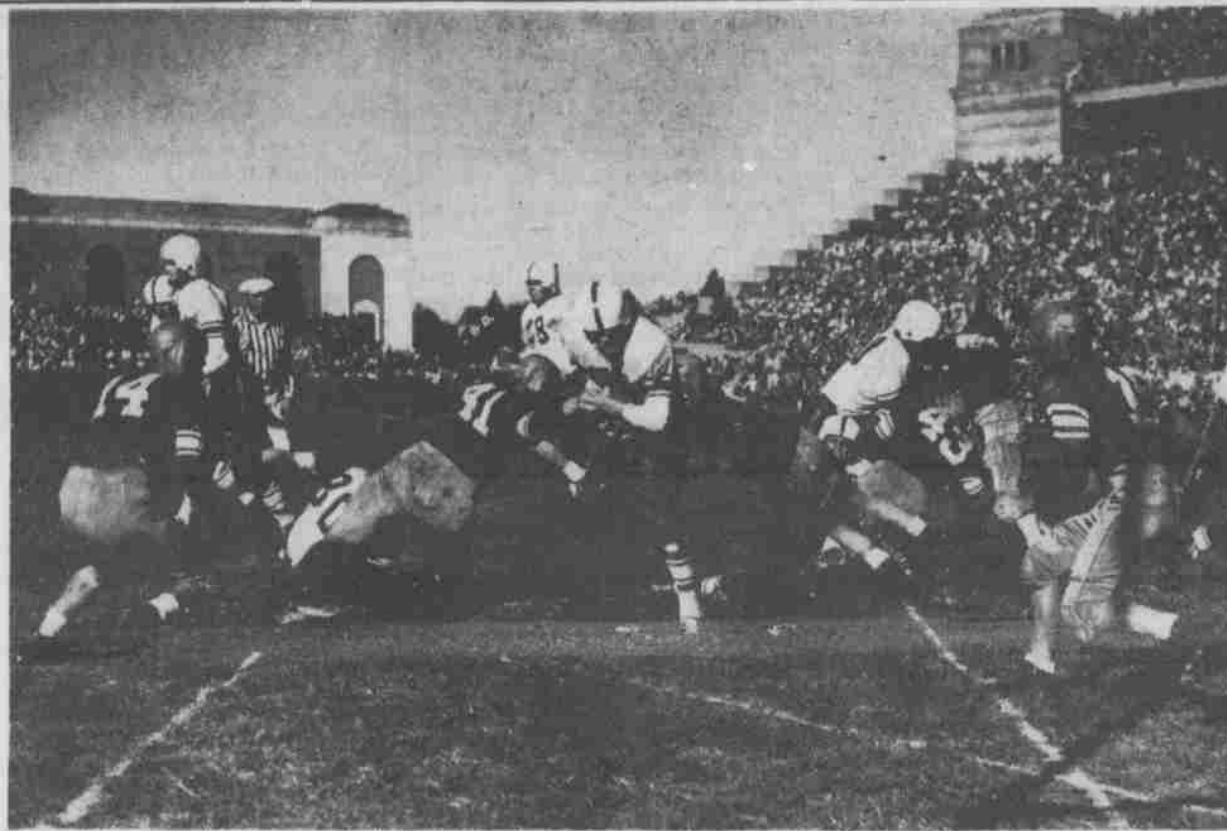
NU Skiers Club Chooses Advisor, Plans Program

Miss Emily Schossberger, advisory editor of "Prairie Schooner", was chosen advisor to the NU Skiers at the recent meeting of that organization.

Plans for an instructional program, which will cover basic fundamentals of skiing and include advice as to choice of equipment, were announced at the same time.

Committees were formed to gather information about skiing possibilities and equipment, to investigate the possibility of skiing in Nebraska, to organize and recommend transportation, and to arrange for skiing instruction. A file of available ski resorts will be kept.

Officers elected at the meeting are president, Bjorn Herse; vice-president, Dean Morrison; secretary, Jackie Anderson, and treasurer, Beverly Schuman.



WHOA SOONER—Pearson of Oklahoma breaks into the Nebraska secondary for a six-yard gain. Weigand of Nebraska is making the tackle, while Fischer is rushing in to give assistance.

IM Bowling Competition to Start Tuesday

Regular league bowling of the Intramural department will start Tuesday, Oct. 25.

Twenty-three fraternities have entered in four leagues of the Interfraternity division. Defending champions, Sigma Nu have been placed in League I along with Acacia, Brown Palace, Delta Upsilon and Kappa Sigma.

League II has Zeta Beta Tau, Sigma Alpha Epsilon, Pioneer House, Alpha Gamma Rho, Delta Chi and Beta Theta Pi.

League III finds Delta Sigma Pi, Theta Xi, Phi Delta Theta, Beta Sigma Psi, Sigma Chi and the Farm House pitted against each other.

League IV has Phi Kappa Psi, Phi Gamma Delta, Sigma Phi Epsilon, Delta Tau Delta, Delta Sigma Phi, and Tau Kappa Epsilon entered.

Will Bowl at Lincoln Alleys

These teams will bowl at the Lincoln Bowling Alleys, 236 No. 12th, on Tuesday, Wednesday and Thursday of each week, starting at 4-p. m.

Winners of their respective leagues will compete in a playoff for the team trophy.

Opening league play for the frats will be Brown Palace going against defending champion Sigma Nu. Zeta Beta Tau bowls against Beta Theta Pi, Delta Sigma Pi versus the Farm House and Phi Kappa Psi plays Tau Kappa Epsilon.

Eight Independents

The Independents have eight teams entered in competition for their coveted intramural medals.

The eight teams entered in their division are Lillies and V-5's, Pershing Rifles, Nisei's, AIEE, Pros, Delta Theta Phi, Phi Delta Phi and Alpha Kappa Psi.

These teams will play at the Rosewilde Bowling Parlors, 1126 P, on Tuesday and Wednesday, starting at 4 p. m. Their first games will find the Lillies bowling against the Alpha Kappa Psi, Pershing Rifles against the Phi Delta Phi, Nisei's against Delta Theta Phi and the AIEE playing the Pros.

The Interdenominational league finds six teams entered. They are Methodist House, Presbyterian House, Baptist Coop., Cotner House, Lutheran Student Assn. and Inter-Varsity.

And, like the Independents, will bowl at the Rosewilde on Tuesday and Wednesday at 4 p. m.

The Interdenominational will hold off a day before they start competition for their trophy. Wednesday will find the Methodist House playing the Lutheran Student Assn., and the Baptist Coop. playing the Cotner House boys.

CIGARS RAY'S CANDY
Try Our
HOT FRESH POP CORN
THICK MALTED MILKS
1516 O Street

Intramural Tennis Play Nears Completion in Two Team Race

Phi Delta Theta and Sigma Nu continue to lead the field as the intramural tennis tournament nears completion.

The two fraternities each have two singles players left in the quarter-final round, and the doubles semifinals are monopolized by the Phi Delt and Sig Nus. The singles pairings are rounded out with two Betas, one SAE, and one independent.

Quarter final play in the singles and semifinal play in the doubles is to be completed by Monday. Finals in both are scheduled for Wednesday afternoon, beginning at 4 p. m.

Doubles May Decide

The team title decision may be decided in the doubles where two Phi Delt entries will face two from rival Sigma Nu. A sweep by either house would almost cinch the title.

The pairings find Tom Brownlee and Bill Henkle, Phi Delt, facing Andy Bunten and Dick Swoboda; Walt Weaver and Jim Lyle, Phi Delt, facing Bob Rogers and Bob Hinde.

In the singles, a bad break in the pairings will be a serious blow to Sigma Nu chances. Their two remaining singles men drew each other in the quarterfinal round.

Other singles matches find Tom

Good Announces Cage Sessions

Basketball coach Harry Good announced the dates of his first two basketball clinics of the 1949 season Saturday.

The first of the pair will be held next Saturday at Holdrege. A fine program has been planned, combining Coach Good's clinic with a discussion of rules interpretation by Lee Webb, secretary of the Nebraska High School Activities Association.

Following the afternoon program will be a full game scrimmage between members of the varsity squad.

The second demonstration of the series will be given Nov. 12 at Fairbury. The varsity squad may scrimmage there also.

Beards Sprouting at CU

Hear Ye! Beard time grows near! Since the University of Colorado claims "the University is noted for the beauty of its women and the virility of its men," they have determined to have a "Days of '49" during Homecoming week next month.

HALF PRICE
BOXED STATIONERY
(Fall Clearance)
Well Known Brands
GOLDENROD
STATIONERY STORE
215 North 14th Street

Frosh Maul K-State 14-0 At Manhattan

In their only scheduled game of the 1949 football season, Nebraska's freshman team handed the Kansas State frosh a 14-0 loss at Manhattan, Kansas Friday night.

Long hours of serving the varsity with plays used by the opposition the following week deprived the frosh of a polished offense. But fierce blocking and decisive tackling more than made up for any lack of a brilliant offense.

Several freshman backs got loose for long runs to rack up a large amount of yardage for the Huskers.

Reynolds Stars

Bobby Reynolds added a fine performance in freshman football to his high school laurels. After Nebraska scored one touchdown in the first quarter, the Grand Island star, supplied the clincher early in the second quarter.

Breaking loose around his own left end, Reynolds raced down the sidelines 70 yards and crossed the goal line standing up.

Nebraska's first touchdown climaxed a 74-yard drive with Louis "Buster" Lehman passing to Jim Levendusky for the score. John Sinclair placekicked both extra points.

Outstanding defensively for Coach "Ike" Hanscom's men were Verl Scott, Mitchell, John Sinclair of Los Angeles, linebackers. Ted Conner, Hastings, Don Boll, Scribner, Dick Goll, Tekamah, and Carl Brasse of Omaha sparked forward line play.

K-State Threatens Once

Kansas State drove to the Nebraska 12 yard line only to lose the ball on downs in the second quarter. Most of K-State's yardage was amassed in the center of the gridiron.

K-State won last year's game in Lincoln, 9 to 7.

STATISTICS

	NU	KS
First downs	8	8
Net yards rushing	170	128
Net yards passing	71	8
Passes attempted	14	16
Passes completed	10	2
Own passes in crept	7	10
Punt average	27.8	29.1
Yards all kicks returned	118	58
Penalty yardage	65	20

NEBRASKA FRESHMAN

- ENDS—Paynich, Connor, Choyce, Gabel, Herbst, Hueneke, Meston.
- TACKLES—Boll, Carlson, Baker, Benda, Dinklage, Grimm, Smith.
- GUARDS—Brasse, Harper, Close, Colson, Greer, Horkins, Thibault, McBride, Makie.
- CENTERS—Rifenbark, Goll, Hussman, Schroeder, Scott.
- BACKS—Ladda, Levendusky, Osborne, Reynolds, Hann, Dunn, Barchus, Curtis, Gerlach, Heacox, Mueck, Muntz, Henninger, Kreylik, Lehman, Niederhaus, Sommers, Thode, Sinclair, Pickering, Carney.

KANSAS STATE FRESHMAN

- ENDS—Keeler, Brokes, Bertrand, Karetzki, Ranie, Underwood, Burkhardt, Barber, Bristawn, Patten.
- TACKLES—Parks, Cravens, Larkin, Berry, Schwerdt, Hartung, Cottrell, Engelage, Wilkinson, Mintun, Vaught.
- GUARDS—Northcutt, Rogers, Lintecum, Burns, Hartley, Curzy, Topson.
- CENTERS—Gox, Hartline, Klamm.
- BACKS—O'Connor, Van Hauerbeke, Brightwell, Connor, Zepp, McDiffret, McClelland, Brown, Towers, Lazar, Hendricks, Oldham, Martino, Potter, Feeter, Lilliequest, Kilewer, McClintock.

Nebraska 7 7 0 0-14
K State 0 0 0 0-0

Nebraska scoring—Touchdowns: Levendusky, Reynolds. PAT: Sinclair 2 (place-kicks).

UNIVERSITY THEATRE
12th & R
PRESENTS THE PLAY
FAUST, PART ONE
by Goethe
On Mon., Oct. 31, Tues., Nov. 1,
and Wed., Nov. 2.
AT THE
NEBRASKA THEATRE
12th and P Streets
BOX OFFICE OPENS TODAY
12:30—5:00 P. M.
MON. THRU FRI.
SINGLE ADMISSIONS \$1.20 (Tax Incl.)