

# Six University Officials Present Views Concerning Temple Building Situation In 'Nebraskan'-Conducted Interview-Poll

BY FRANK JACOBS.

University leaders have definite ideas on the Temple situation a "Daily" interview-poll has shown. Although divided on proposed method, six men representing several phases of the campus scene have offered important views on the problem.

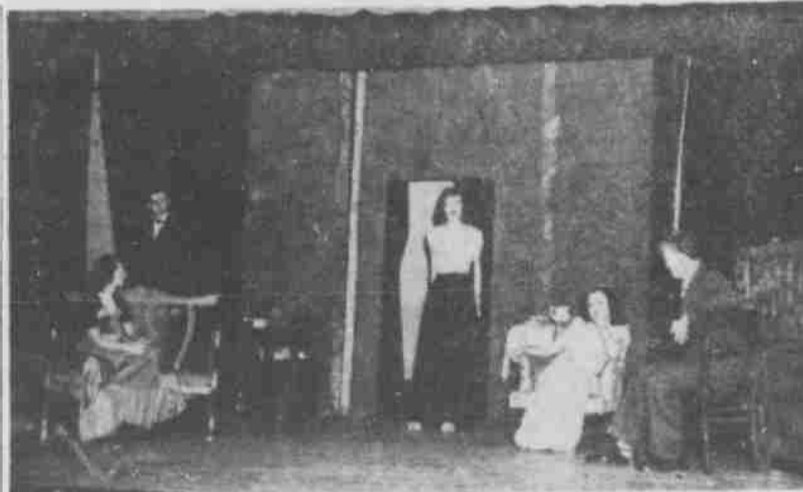
John Selleck, general business manager, comptroller and corporation secretary of the Board of Regents: "I prefer to see the university take their time with a long-range project, a really fine little theater."

Leroy T. Laase, Chairman of Speech Department: "We are hopeful that the University Theater will be given the green light to announce its productions for next year . . . either the Nebraska theater or the Temple depending when the auditorium becomes available."

ARTHUR WESTBROOK, director of the School of Fine Arts: "I am hoping for a Fine Arts building. I feel it would appeal to somebody to donate the funds."

Max Whittaker, director of Experimental Theater—"I find student morale has suffered. The students feel helpless because their future doesn't look too bright."

Gordon Lippett, executive secretary of the University YMCA—"The theater is a very important part of campus contribution to the entertainment and culture of campus life. Unless there is a new building it seems very advisable to remodel the present building



THE EXPERIMENTAL THEATRE long has been the supplementary stage for the University Theatre. Now, due to Temple banning, the only stage left open in the building at 12th and R. The above is a scene from an Experimental Theatre production.

to meet the fire marshall standards for next fall."

NELS BENGTSON, dean of Junior division—"I hope that the Temple Theater can be made safe, usable and attractive. The University Players, during the past 30 years, have developed the reputation for high-class performances and have served a need for the University public and for some Lincoln friends as well.

"The training for students participating is training for life as well as, in a few cases, for professional careers. All University graduates, wherever they may be, are expected to be able to appear well in public and the training obtainable through theatrical performances is of high value in this respect."

Home Ec Club meeting in Home Ec parlors, 5 p. m. A guest speaker on spring fashions will be featured.

## NU Bulletin Board

Radio Section of Speech Department on the air over KFAB-FM from 4 to 4:15 p. m. and from 4:30 to 5:30 p. m., Monday through Friday.

Participants in the Red Cross Easter Parade Style Show will meet at 7 p. m. in the Rag office in the Union.

Red Cross Institutions committee meeting at 5 p. m. in Room 313, Union.

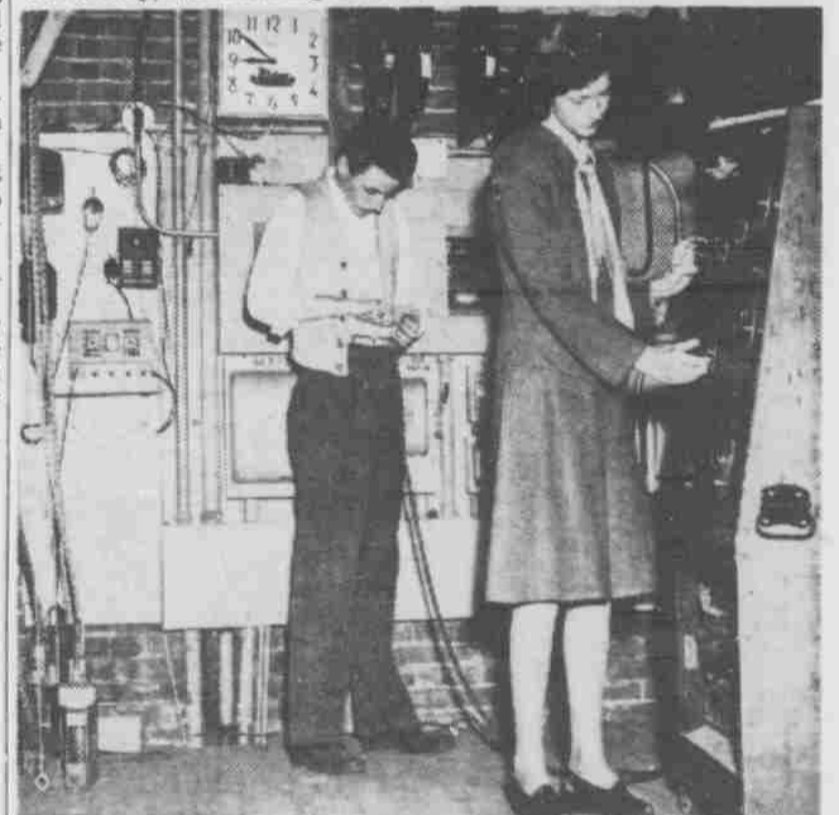
Deadline on Delian Union Short story contest. Mail manuscripts to Clark Gustin, 2233 D Street, Lincoln, Neb.

House Rules and Library meeting at 7:15 p. m. in Craft Shop.

All men who want to be in any of the dancing choruses for the Kosmet Klub spring show should meet Thursday 7 p. m. at the Temple.



THEATRE TECHNICAL director Robert Black instructs a few members of the construction crew in the art of scenery building. As with other theater departments, the saws, hammers and workers of the scene shop, are receiving little use.



A PAIR of industrious light crew members examine the intricacies of the switch-board. Recently replaced by a huge new panel, the switch-board joins the list of theatre equipment standing idle. This is current news.



ABOVE IS another scene that is just a memory. Since last November, the lights have been off in the make-up room—at least for any University Theatre production. Another of the many innovations financed by the ingenuity of the theatre, the now idle makeup room contains the best in fluorescent lighting.

## MAGEE'S



As Advertised in "Charm"

*straw serenades your spring*

Oh so very pretty . . . your new Easter hat . . . and so very flattering, too. You'll want to select your new Easter hat from Magee's collection of young styles, priced ever so modestly. Select your Easter hat from Magee's today!

3.95 to 6.50

Millinery

MAGEE'S Third Floor



DON'T DROP THAT DRESS! A pair of energetic wardrobe crew workers examine costumes for a University Theatre production. The costume room is another Temple department suffering from the Theatre ban.