

# Agri-View

By Mike Gustafson

This week attention is focused on a membership plan initiated by the Ag Men's club through the untiring efforts of President Keith Arterburn. It's a plan designed to give anyone obtaining membership in the club due reason to feel proud of his associations with the Ag group.

In the new constitution, recently instituted, membership is obtained in this way: if you have a friend in the club already, he may recommend you for membership or you may make the request personally. Then if your grades make an average of 70 or better (raising this standard has been considered) your name will go up before the judicial committee for discussion as to your potentialities for future benefit to the club. If you survive this sifting process, your name goes before the club for a final acceptance vote.

The past method of non-limitation of membership, which is the general procedure in some other Ag clubs, resulted in the accumulation of a large back-log of "dead-wood" membership which hindered the club in more ways than one. Now three straight absences from weekly meetings annuls your membership in Ag men's social as will absences totalling one-fourth of the scheduled semester meetings, whenever such shall accumulate during the semester. However, after ex-communication, if you despair of your negligence, you may appeal to the judicial committee for a "clemency" hearing of your case.

What are your chances of getting into the club? If you're interested in the group because you feel it has possibilities of representing Ag barb students both socially and politically, then you most likely will have little trouble getting in. You're the kind they're looking for. But if you're just looking for another organizational name to add behind yours, then perhaps you'll be disappointed.

Bob Duis, Bill Elliott, Ben Henry, Orvid Owens, Bob Parker, Bob Rosenquist, Sterling Seaton, Ed Tagtmeier and Ed Wells.

# '48-'49 Campus Queens Take 'Nebraskan' Spotlight

BY FRANK JACOBS

Sweethearts . . . Queens . . . honorary titles . . . every year several lucky lasses on the campus claim such names. In this issue, The Daily Nebraskan has amassed for the public the faces and figures of the eight coeds honored to date.

Each has reigned or has been honored at a particular function during the year and each knocked herself out in activities.

JEAN BLAHA, the "Hello Girl," is a Teachers college junior. Miss Blaha is a member of Tassels and Coed Counselors and is recording secretary of the Newman club.

Junior Queen Dorothy Borgens, a junior in Teachers college, is a member of YW cabinet, Coed

Counselors, Student Council and Alpha Chi Omega.

Phyllis Harris, Honorary Colonel, is a senior in Teachers college and a member of Pi Lambda Theta, vice president of AWS, a Mortar Board and vice president of Alpha Chi Omega.

Typical Nebraska Coed is Betty Green. Miss Green is a sophomore in Arts and Science and is a member of YW, Cornhusker section editor, Union Special Activities committee, member of Panhellenic council and Delta Delta Delta.

PEP QUEEN Mary Helen Mallory, an Arts and Sciences junior, busies herself with such activities as Tassels, Coed Counselor board, AUF and YWCA. Her sorority is Kappa Alpha Theta.

Louise McDill, Nebraska Sweetheart, is Student Council secretary, Daily Nebraskan News Editor, Secretary of Ag Exec board and a member of Phi Upsilon Omicron.

Marge Reynolds, the Farmers Formal Queen, and senior in Home Economics, is on the Ag Exec board and is a member of Phi Upsilon Omicron, Omicron Mu and Amikitas.

Interfraternity Sweetheart Marilyn Weber is an Arts and Sciences sophomore. Her activities include Alpha Lambda Delta, YWCA, Cornhusker and Coed Counselors. She is a Gamma Phi Beta.

## Music Frat Tabs Initiates,

Gamma Lambda, Nebraska's national honorary band fraternity, has initiated ten new members and pledged ten more, according to Kent Tiller, president.

Members are chosen for their musicianship, leadership and overall contribution to the band. Fall pledges who were initiated at the beginning of this semester are Don Boyd, Art Curtiss, Bob Hinds, Don Korinek, Phil Neff, Don Schneider, Don Steinacher, Bill Splichal, Jack Tilton and Orville Voss.

New pledges, who have played with the band for three or more semesters, are Merle Bergeson,



Watching the photographer's birdie, the campus "queens" smile as the shutter clicks. In the usual order: Nebraska Sweetheart Louise McDill, Interfraternity Sweetheart Marilyn Weber, PProm Queen Dorothy Borgens, Hello Girl Jean Blaha, Pep Queen Mary Helen Mallory, Typical Nebraska Coed Betty Green, Honorary Colonel Phyllis Harris, and Farmers Formal Queen Marjorie Reynolds.

**GOLD'S**  
of Nebraska

\* Lincoln's Daily Department Store

**SIGNS OF SPRING**

A touch of spring . . . costume flowers in soft colors. A lilac, pink carnation, delicate violets . . . or a tiny straw hat of flowers.

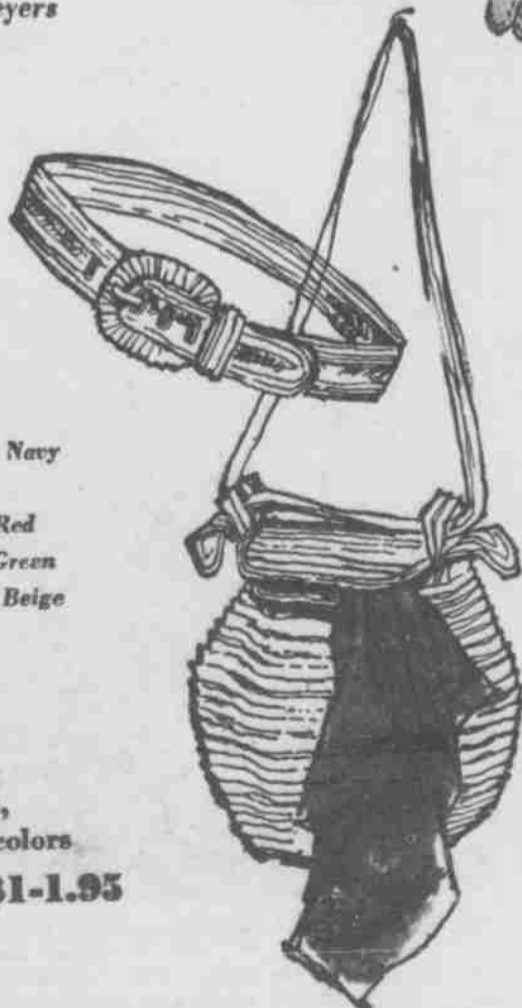
**50c to 1.95**

Double-woven nylon in a long-easily-crushable glove. All the nylon characteristics. Stark white only.

**2.95**



by Meyers



Button and bows . . . a dressy shortie. Gold button at wrist. Pearl gray, stark white.

**2.95**



Box style straws in solid colors, print linings. Attractive additions to spring and summer wardrobes.

- Coolie Straw Bags by Garey . . . 2.95
- China Straw Bags by Debway. 1.95
- Italian Rustik from Tally Ho . . . . . 4.95-7.50
- Madagascar Straw . . . . . 4.95 plus tax

- Spring Navy
- Black
- Tulip Red
- Kelly Green
- Honey Beige

- Garey
- Straw
- Belts
- Solids,
- Multicolors

**\$1-1.95**

GOLD'S.. Street Floor

like cream hair tonics?

Here's the cream of them all!

**contains Viratol**

NEW FORMULA WITH VIRATOL\* works wonders in the looks of your hair. It looks natural... it feels natural... and it stays in place! Try a bottle.

\*This special compound gives lustre... keeps hair in place without stiffness.

**new Vaseline cream hair tonic**

gives your hair that "just-combed" look...all day long!