

Records Show Wide Use Of Student Union Facilities

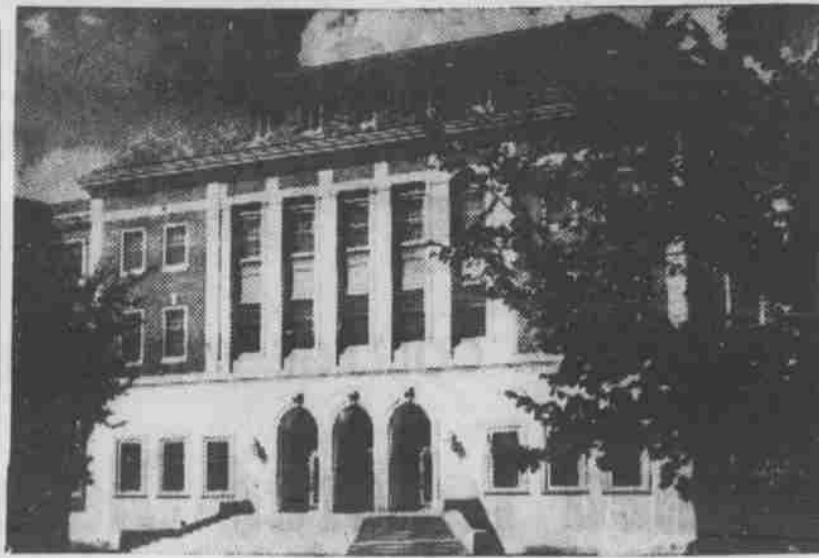
A few statistics have been chosen at random from Union records to give some indication of the extent of the usage of certain Union facilities during the school year.

Since the beginning of the fiscal year to the end of last semester the union had served 354,560 customers in the Crib, 153,736 meals in the Campusline, 37,833 at special luncheons and dinners and 19,695 in the main dining room with still another 61,000 employees meals recorded, Director Dwane Lake has announced.

Building services show 71,956 people accommodated for private meetings and conferences. Traffic checks taken last winter and spring show that more than 6,000 people come into the Union on an average day.

A further check of recreational services shows ping pong equipment checked out approximately 165,000 times and playing cards over 45,000 times. The use of the Book Nook, and music room can only be roughly estimated, Lake said.

Attendance reports show nearly 10,000 people at Union sponsored dances and an additional 6,000 at organization dances. Convocations and lectures accommodated more than 9,000, and concerts about the same number. Sunday variety shows, plays and talent shows had an attendance of 13,270, with Sista film hours another 4,725, dancing classes 2,878, coffee hours 5,125, bridge instruction 881, open houses and special parties more than 8,000.



The popular Student Union the "home away from home" for all University of Nebraska students is located at 14th and R Streets. Lentz shown in rehearsal with the band which has been cited nationally as one of the most outstanding collegiate band organizations in the entire United States.

Health Service Offered

From the time regular classes begin, each student at the University is entitled to services and facilities of the Student Health, providing the student has completed his registration.

Services end at midnight on the last day of final examinations at the close of each semester or summer school session.

Hours for the city campus clinic are from 8-12 a. m. and 1-5 p. m. Monday through Friday and from 8-12 Saturday morning, and is closed Saturday afternoons, Sundays and vacations. Student infirmary visiting hours are from 2:30 to 4 p. m. and 7 to 8:30 in the evening.

No Vacation Service.
No medical or hospital services



DR. SAMUEL I. FUENNING

are furnished during vacations, except in the case of a student who is hospitalized at the time a vacation begins, and then in case of emergency only.

The student health service fee entitles the student to: a complete physical examination upon entrance (required of all students entering the University for the first time); one complete physical examination every year thereafter while enrolled in the University; military and physical education placements; intramural and swimming examinations; special examinations required by Nebraska statutes for certification of teachers; all medical services which can be rendered ambulatory patients.

Present student health quarters are located at the southeast corner of the quadrangle. The first story is the dispensary and the second the infirmary, holding 15 bedrooms with a maximum capacity of 26 beds.

Accuracy, Speed Keynote Activity in Love Library

Accuracy and speed will be the keynote in Love library from now on. Books will be charged at the loan desk and reserve desk in a split second by ingenious electric-automatic book charging machines.

Each student and faculty member will be issued a small borrower's card. Attached to this card is a metal tab that carries an embossed number. This number becomes the student's library serial number for the entire period that he attends the University.

To charge a book, the librarian inserts this card into an open chute on top of the machine. The book card is inserted in another chute and automatically the date due and the student's number is printed on the book card.

The machines, installed this summer, are so fool proof and easy to operate that hundreds of

libraries throughout the country are using them. The time consuming task of signing names and addresses on call slips is completely eliminated. The library also hopes to eliminate some of the unpleasant arguments at the loan desk with this installation, according to Richard A. Farley, assistant librarian. A book may be charged to a borrower only when his card is used in the machine.

GI Bill Scheduled To End July, 1957

Educational training for veterans under both the G.I. Bill and Public Law 16 will expire on July 25, 1957.

This date also terminates the period during which veterans may obtain loans guaranteed by the government. Readjustment allowances under the "52-20" club expire on July 25, 1957.



Leather Jackets!

12⁹⁵

- Genuine Goatskin
- Aviation Brown
- 3 Roomy Pockets

Buy early and save—this fine quality goatskin jacket will be \$20 later.

First quality, completely leather faced, guaranteed never to crack or scuff.

Full zipper, plus belted back.

LEISURE JACKETS 3⁹⁵	FLYING JACKETS 15⁹⁵	SUN GLASSES 1⁹⁸
--	--	--------------------------------------

UNITED ARMY STORE

1028 O St.

THE STORE OFFERING

Culinary Satisfaction

EDDIE'S

"FOODS TO SUIT YOUR TASTE"

- ★ GROCERIES ★ FRESH FRUITS
- ★ MEATS
- ★ PASTRIES ★ ICE CREAM

NEAR CAMPUS AT 1717 "R" STREETS

DELIVERY SERVICE

TEL. 2-3160

EDDIE NEIDEN, Prop.

MRS. MARY LUTZ . . . invites you for your dining and entertaining pleasure . . . to the beautiful air conditioned

COTNER TERRACE

★ Featuring Outstanding Floor Shows and Orchestra Music.

★ Hold your special parties and affairs in the wonderful atmosphere of this food resort.



Open Daily except Mon.
Sun. 12 noon to 10. p m.
Week days—5 p. m. to Mid-nite

Lincoln's Largest and Finest Food Resort"

COTNER TERRACE

225 No. Cotner Blvd.

Dial 6-5044 or 6-2277

STUDENTS ARE ALWAYS WELCOME at

METZ TEXACO SERVICE

SPECIAL CONSIDERATIONS TO YOU, THE COLLEGE STUDENT

- WASHING • POLISHING • WAXING
- MARFAK LUBRICATION
- FAST BATTERY CHARGING

"Service or Else"

Just Off Campus at 1601 Que

Ph. 2-1815