

Three UN Teams Face Road Trips

THIS WEEK'S SCHEDULE.
Friday.
 Baseball team vs. Minnesota at Minneapolis.
 Tennis team vs. Kansas at Lawrence.
 Golf team vs. Kansas at Lawrence.
Saturday.
 Baseball team vs. Minnesota at Minneapolis.
 Tennis team vs. Kansas State at Manhattan.
 Golf team vs. Kansas State at Manhattan.

Husker athletic teams move into another action-packed week, with all varsity squads except the track

team seeing action. Every contest will be played away from home, as the baseball nine is up north for a two-game series with Minnesota, while the golf and tennis teams make a swing through Kansas for matches with Kansas U. and K. State.

Fresh from a pair of wins against the University of Colorado the baseball squad will go against stiffer competition this weekend in Minneapolis. Word from the Gopher campus touts the Minnesota nine as a potent crew, in keeping with the Northland tradition.

Coach Frank Smagacz's crew chalked up 10 to 0 and 5 to 3 wins over the visiting Buffs last week. The mound staff held up in fine style, and Smagacz sent six different pitchers into action during the two-game series.

This week's play will be the first for the golf and tennis squads. After being idle during the war years, the sports have been revived this season and the Husker competitors face a full slate of matches.

The golfers, under the tutelage of Bud Williamson, and the tennis team will travel together, both meeting the same Big Six foes on Friday and Saturday.

The Nebraska trackmen will be out of competition this week, as they prepare for two important relay carnival dates. On April 20 the cinder squad moves to Lawrence for the twenty-first annual Kansas Relays and the following week Coach Ed Weir takes his charges to Des Moines for the Drake Relays. Each of these meets brings together some of the nation's top ranking track and field performers.

IM Volley Ball Competition Opens In Four Leagues

Eighteen volleyball sextets, divided into four leagues to speed play, are scheduled to compete in three weeks of games to determine the intramural champion. Members of the four leagues will participate in a complete round robin of contests; then the four winning teams will play a single-elimination tourney to determine the top aggregation.

Leagues and schedule are listed below:

- | | |
|---------------------|--------------------|
| League I. | League III. |
| Alpha Tau Omega | Phi Gamma Delta |
| Pioneer Co-op | Brown Palace Co-op |
| Cornhusker Co-op | Delta Upsilon |
| Sigma Alpha Epsilon | Beta Sigma Psi |
| Sigma Nu | Farm House |
| League II. | League IV. |
| Phi Delta Theta | Beta Theta Pi |
| Theta Xi | Sigma Chi |
| Alpha Gamma Rho | Zeta Beta Tau |
| Phi Kappa Psi | Sigma Phi Epsilon |

- Schedule.**
- Monday, April 8.**
 5:10 Alpha Tau Omega-Pioneer Co-op.
 5:10 Phi Delta Theta-Theta Xi.
 5:10 Sigma Chi-Zeta Beta Tau.
- Wednesday, April 10.**
 5:10 Brown Palace Co-op-Beta Sigma Psi.
 5:10 Phi Kappa Psi-Alpha Gamma Rho.
 5:10 Corn'ker Co-op-Sigma Alpha Epsilon.
- Thursday, April 11.**
 5:10 Sigma Nu-Alpha Tau Omega.
 5:10 Phi Gamma Delta-Farm House.
 5:10 Delta Upsilon-Beta Sigma Psi.
- Friday, April 12.**
 5:10 Beta Theta Pi-Sigma Phi Epsilon.
 5:10 Phi Delta Theta-Alpha Gamma Rho.
 5:10 Theta Xi-Phi Kappa Psi.
- Monday, April 15.**
 5:10 Delta Upsilon-Farm House.
 5:10 Beta Theta Pi-Sigma Chi.
 5:10 Pioneer Co-op-Cornhusker Co-op.
- Wednesday, April 17.**
 5:10 Zeta Beta Tau-Sigma Phi Epsilon.
 5:10 Alpha Tau Omega-Sig. Alpha Epsilon.
 5:10 Cornhusker Co-op-Sigma Nu.
 7:10 Phi Gam. Delta-Brown Palace Co-op.
 7:10 Beta Sigma Psi-Farm House.
- Thursday, April 18.**
 5:10 Phi Gamma Delta-Delta Upsilon.
 5:10 Brown Palace Co-op-Farm House.
 5:10 Beta Theta Pi-Zeta Beta Tau.
 7:10 Pioneer Co-op-Sigma Nu.
 7:10 Phi Delta Theta-Phi Kappa Psi.
 7:10 Sigma Chi-Sigma Phi Epsilon.
- Friday, April 19.**
 5:10 Alpha Tau Omega-Cornhusker Co-op.
 5:10 Theta Xi-Alpha Gamma Rho.
 5:10 Pioneer Co-op-Sigma Alpha Epsilon.
- Monday, April 22.**
 5:10 Brown Palace Co-op-Delta Upsilon.
 5:10 Sigma Nu-Sigma Alpha Epsilon.
 5:10 Phi Gamma Delta-Beta Sigma Psi.
- Tuesday, April 23.**
 7:10 Playoff games for championship.

Fem Fun

BY DOROTHY MESHIER.

Two tournaments, scheduled on the W.A.A. calendar, began Monday, April 8. Schedules for these tournaments, bowling and badminton, are posted on the bulletin board at Grant Memorial. Representatives should check immediately for the date that their teams will be playing.

Badminton doubles will be played at 5 and 5:30 each day. There are 76 teams participating.

Bowling will be held at 5 o'clock each day at the Lincoln Bowling Alleys. Kappa Alpha Theta, Alpha Chi Omega, Gamma Phi Beta, Alpha Phi, Delta Delta Delta, and Alpha Omicron Pi each entered two teams in the competition.

Add
Flight Training
 to your curriculum.
 Private courses now available at—
UNION AIR TERMINAL
 Call 6-2885 for details.

Spomer Leads Field in Golf Team Tryouts

Don Spomer of Lincoln paced eight qualifiers for places on the University of Nebraska golf team by shooting a 75 Sunday in the final round of preliminary play at Hillcrest Country club.

Fifteen aspirants for spots on the Husker squad toured the course, and eight low men will vie for the fourth berths through a series of intra-squad matches this week.

K.U. First Foe.

Coach Bud Williamson's Huskers will open their intercollegiate play this week end with a pair of matches. On Friday they will face the University of Kansas team at Lawrence, while on Saturday the Kansas State golfers will furnish the competition at Manhattan.

The eight qualifiers:

Don Spomer	38-37-75
Kenny Adams	38-39-77
Ed McEligott	40-41-81
Don Stroh	38-43-81
Jim Liggett	44-39-83
George Dalley	42-41-83
Mac Graham	41-42-83
Rex Gribble	42-42-84

Sinfonia Harmony Hour

The Harmony Hour program scheduled for the Tuesday of March 26, will be held today at 4:00 in the student union music room. The program will be based on "Humor in Music," and will include Prokofieff's Peter and the Wolf, The Carnival of the Animals by Saint-Saens, and numerous other works.

WANTED WATER FOUNTAIN ATTENDANT

5:00 P. M.-7:00 P. M.
 Mon., Tues., Wed., Thur., Fri. and
 6 Hours Saturdays
 3 Hours Sundays
Wages:
 35c an hour
 and 2 Meals a Day
 Apply Room 1 of the Union

INTRAMURALS

All-Intramural Basketball

Selected by George Miller and Gordon Ehlers.

Due to the large number of players competing, no attempt was made to divide the selections into a first and second team. Team roster changes at the end of the semester also made the task of choosing an all-star team a difficult undertaking.

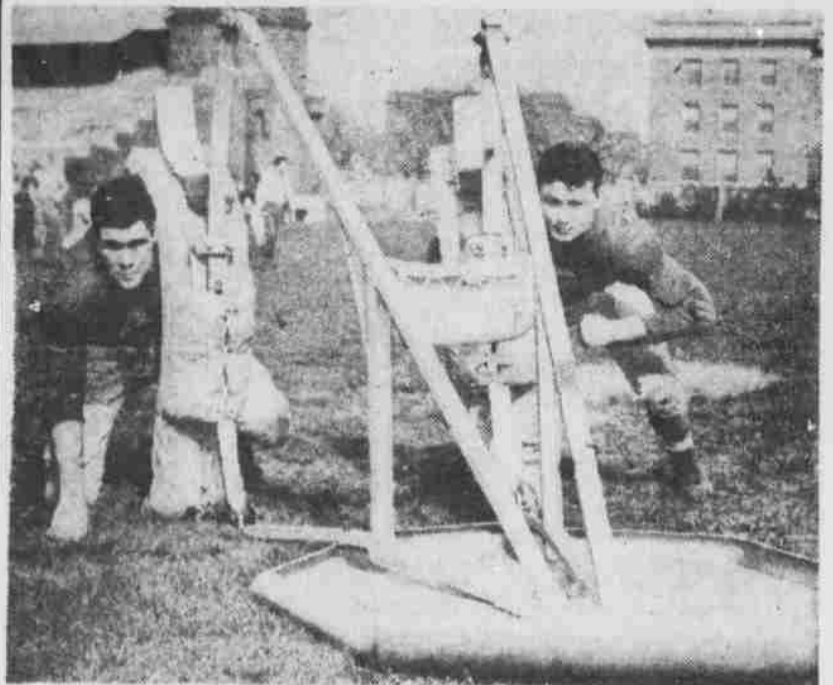
No player who appeared in varsity games were considered in selecting the all-intramural teams.

- FIRST TEN.**
 F Roy Farris, Beta Theta Pi
 F Dean Kratz, Delta Upsilon
 F Jim Myers, Phi Gamma Delta
 F Dean Jackson, Phi Delta Theta
 C Bob Schleiger, Phi Gamma Delta
 C Jim Pettis, Navy
 G Hubert Winter, Phi Delta Theta
 G Al Bloom, Delta Tau Delta
 G Franklin Christensen, Sigma Chi
 G Jim Gardner, Sigma Alpha Epsilon

Honorable mention: Boudreau, Navy; Ernst, Tired G's; Berger, Beta Theta Pi; Bob Green, Phi Kappa Psi; Wilkins, Sigma Nu; Saladen, Sigma Alpha Epsilon; Bauer, Beta Sigma Psi; Dedrick, Alpha Tau Omega; Nutzman, Phi Gamma Delta; Grewcock, Brown Palace.

Water Polo

Changes in the water polo schedule:
 Sigma Nu vs. Sigma Chi, Tuesday, April 9, 5:10.
 Beta Theta Pi vs. Phi Kappa Psi, Wednesday, April 10, 8:10.
 (The Lilies' water polo team has dropped from competition.)



—From The Lincoln Journal.
 Carl Samuelson, (left) Grand Island and Joe Lukas, Lincoln, Husker line candidates, jolt the blocking sled into motion during a practice session in Coach Bernie Masterson's spring gridiron drills.

Corncobs
 Corncobs, mens' pep organization, was reactivated this year after a war-time absence. Organized in 1921, they act in cooperation with the Tassels to promote school spirit. Dean Skokan is the 1945-46 president.

THE WORLD'S MOST HONORED WATCH

Longines

THE MOST HONORED WATCH ON THE CAMPUS

WINNER OF 10 World's Fair Grand Prizes, 28 Gold Medals and more honors for accuracy than any other timepiece.

BEN SIMON & SONS Our Fortieth Year!

Accessories are EASTER MINDED!

a . . . Jacqueline Mode original. Framed in mock Tortoise, and extravagantly pouched; our black plastic patent is rayon satin lined. 17.50*

b . . . To feminize your suit; a white embroidered dickie of organdy, frilled with lace. 8.25*

HANDSOME GOLD COLORED LINK JEWELRY
 The Choker\$4* The Bracelet\$2*

Street Floor.

* Plus tax