

Ragged Edges

BY PHEE MORTLOCK AND SARAH MURRAY.

Snow . . . hail . . . wind . . . hail . . . rain . . . hail . . . Oh, hail, where is all this getting us????? . . . Right to the DG dinner dance last night . . . Hannah's graces really charmed, or so thought Beta Larry Stomer of Patsy Winter and Sigma Nu Bob Cole of Janie Freye.

Joan Holmes really got the hunk of man in Dugie Doyle and was the envy of all the gals . . . Pat Kocum and ATO Seaman Jerry Jacupke were beating the boards along with Russ "oh, you man you!" Ledger and Helen Johnson . . . Big Ed Ehlers of the Wings was scoring with Shirley Hillmer . . .

The Sig Eps contradicted the "Blue Party" theme Friday night by having a rip-roaring time. Duos ripping and roaring were Gamma Phi's Mavis McMurray and Betty Marquart with Evan Friso and Don Munson . . . then there were the pinmates Jan Horn, Tri Delt, and Dean Messman, and Kappa Myra Colberg with Gene Dixon.

The third of the week-end parties was that thrown by the AOP's making Saturday night the UN-lonelist night of the week. Doris Westfall and Phi Psi Rudy Srb were there as were Mary Alice Douthit and Lt. Mal Renard . . . Lois Wirth plus Zip Phil Munson equaled pecks of fun . . .

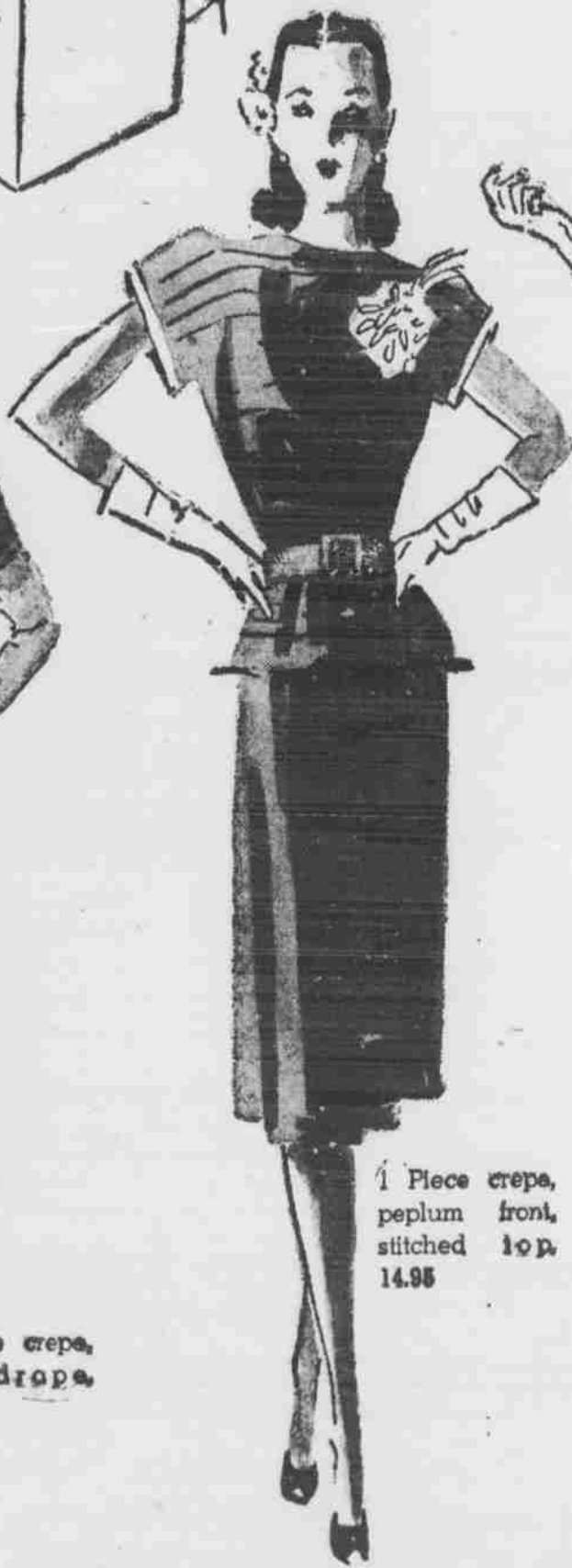
Pi Phi Mary Lou Hildebrand and Beta Bill Swanson are cooing "Spring Will Be a Little Soon This Year" . . . Jane Meyer, KKG, and Phi Psi Bob Hamilton are our choice as a pair we'd like to see more often . . . Jeanette Hille journeyed to Kearney to see the Lt. of her dreams last week-end . . . B. J. Latta, Theta, took a certain Lt. George home to Omaha . . . what is this thing called George? . . . also taking the man of her choice home was Alpha Chi Tibbie Curley who showed Phi Psi Tom Green to Seward.

Over Phi Gam way, the brothers can't understand why "Jac" Jacobson wants to rent a car just to take Mary Kay Bogan Tri Delt, to a show . . . Virginia Demel, Alpha Phi, and Tip Tyler, Phi Gam, are having a last fling as pinmates before the Navy intrudes . . . Theta Coll Quigley's 12:30 evenings were spent with Leonard Dunker, DU, and Tau Gene Wyler . . . Friday and Saturday night men, respectively . . . guess that doesn't leave much room for Martin Pesek, Sig Chi. . . even the best of hair must part . . . but before we part . . . we can't let this old flame between Pickles Pegler, Sig Chi, and Kappa Jo Guenzel flicker away unnoticed . . . just might be hairing from us again.

Howland-Swanson



1 Piece crepe, side drape, 22.95



1 Piece crepe, peplum front, stitched top, 14.95



1 Piece crepe, peplum front, 22.95

Cap Sleeves

FASHION NEWS IN OUR SPRING DRESS COLLECTION

14.95 to 29.95

For the T square, slim waist effect, wear fashion's newest—the Cap sleeve. Our collection includes dark and pastel crepes. Sizes 9 to 16, 10 to 18.

Protect Your Future!
 Union Central Life Ins.
 Drop In or Call
 Edward J. Cizek
 Special Agent
 S A E House—2-7740



IT'S A RACE

to keep ahead of today's demands but we continue to offer the very best of service.

The Evans
 2-6961
 LAUNDRY-CLEANING