

Campus Activities Progress

Student activities on the campus have undergone many changes in the past year but the majority of the organizations are functioning as normally as possible under the conditions. Kosmet Klub and Corn Cobs, both men's organizations, are the only two that have been forced to disband for the duration, and one new group War Council, was the only new organization added last year.

The Student Council is a governing board elected each spring by the entire student body. It supervises student elections. Lois Christie is president.

Rachel Ann Lock is president of Mortar Board, an honorary group made up of outstanding senior women. New members are masked in the Ivy Day ceremonies. Mortar Boards sponsor the loan fund, Mortar Board party, scholarships, scholarship tea, and women's activity conference.

Catherine Wells serves as head of Coed Counselors, which is made up of 50 picked upperclasswomen who act as "big sisters" for freshmen women on the campus. They sponsor the Friendship Dinner, the Penny Carnival.

The Y.W.C.A., Women's Christian organization, tries to help all coeds realize a full and creative college life through worship, community service, personal relations, race relations and war work. Some of the "Y" activities are publication of the N-Book, surgical dressings, vespers, vocational groups and Tiny "Y." The city campus president is Ann Wellensiek, and ag campus president, Peggy Larson. The Y.M.C.A. is the corresponding men's organization.

All university women are members of the Associated Women-Students organization. Activities are carried on through three groups, the executive board, the legislative body composed of the presidents of all organized houses and the WAS Court. The organization backs the All Activities Mart, a vocational guidance program, and the Ivy Day Sing. Janet Hemphill is president of AWS.

War Council is in charge of women's war work, including surgical dressings, USO junior hostesses, Lincolnettes, First Aid and Home Nursing classes, sale of stamps and bonds, and the war show. Pat Chamberlain is president of the council.

Tassels is the pep club and sponsors the presentation of the pep queen each year. Membership is made up of representatives from all organized, affiliated and barb groups on the campus. Mary Russell is president of Tassels.

Polly Petty is president of Student Foundation, which was organized in 1942 to publicize the University. An essay contest for high school seniors is one of its important projects.

The Women's Athletic Association promotes physical activities and good sportsmanship on the campus. It is made up of a number of clubs for enthusiasts of individual sports. Joyce Junge is president of the WAA.

The Barb Activities Board for Women was organized to encourage unaffiliated women students to participate in campus activities. Mary Ellen Sim Dewey is president of the board. The Interhouse Council is made up of representatives from the residence halls, co-op houses, and other barb women's organization.

The Nebraska Independent Association is made up of all unaffiliated students. The assembly meets every week and has charge of barb social, athletic and intramural programs. The smaller governing body for the group is the NIA Council. This council elects its own officers with the approval of the assembly.

The Princeton University Press will publish a monumental collection of the writings and correspondence of Thomas Jefferson to mark the two hundredth anniversary of Jefferson's birth. The writings, consisting of 13 million words in 50 volumes will cost \$344,300 to produce and will be partly financed by the New York Times.

Dr. Clark George Kuebler was inaugurated president of Ripon college on Dec. 2.

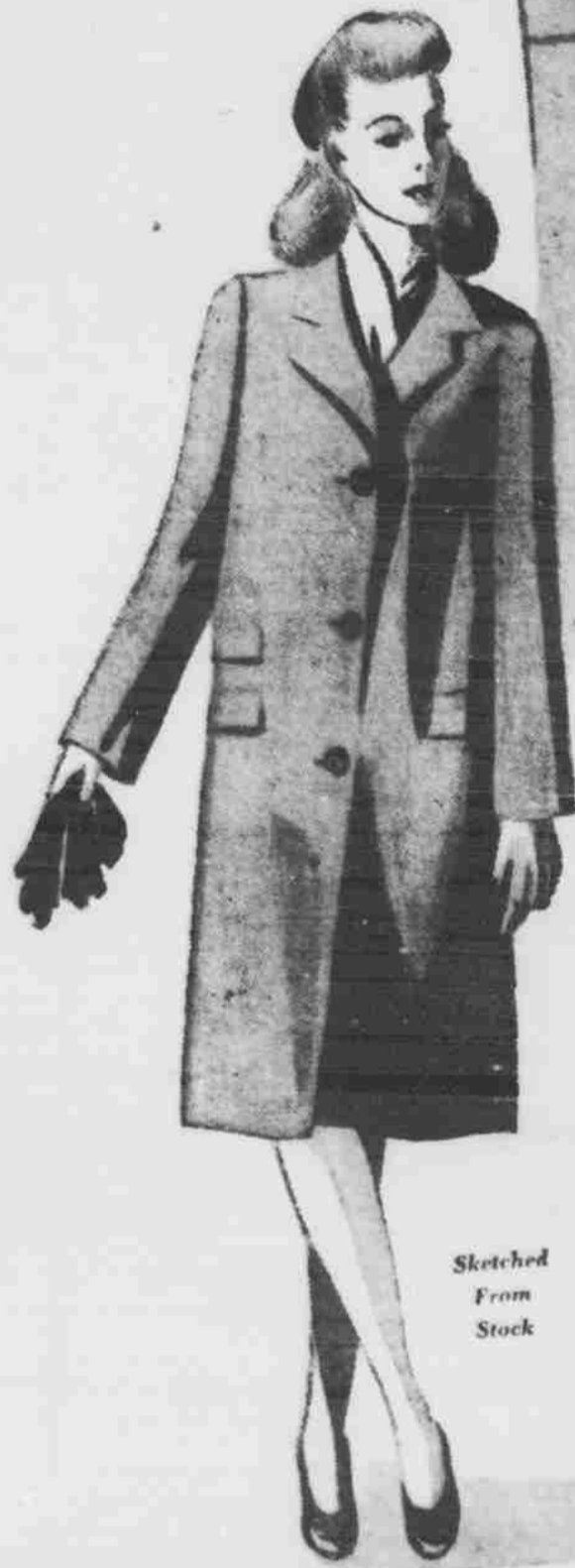
BEN SIMON & SONS

For all kinds of weather

CRESTKNIT TOPCOATS

GABARDINE topcoat, master-tailored by men's tailors, just like the famous Crestknit Coats for men . . . shower-proof, wrinkle-proof, of 100% all wool gabardine. In natural only, sizes 10 to 20.

39.95



Sketched From Stock



Flower-Splashed

BLOUSES

by Rothley

The gaily colored rayon crepe blouse pictured comes in several bright color combinations, to add zest to your spring suit. Well tailored, in the Rothley manner. Sizes 30 to 38.

3.50



SHORT STORY

on SWEATERS

New sweaters take a trend to shorter lengths, less casual lines . . . but if you've a yen for the long Sloppy joes and Sues, we have them too, in lilac, aqua, beige, coral, pink, skipper blue, red, maize and natural. All wools.

Slipovers, 4.95 to 7.95; Cardigans, 5.95 to 8.95.

SPRING SKIRTS—Multiply your wardrobe with a plaid skirt in white or pastel backgrounds. Of wool and rayon mixture. Sizes 24 to 30.

5.95