

Muddling Through

With
John C. Bentley

BY JUDGE MASON.

In front of a howling khaki crowd that filled the stadium to overflowing, fem-football was introduced to America by the UN Bloomers and the Pittsburg Panters, at the Nebraska stadium yesterday.

Sparked by "Big Bertha" Sallysbury, the Bloomers crashed and bashed their way to a 14-0 victory

EXPERT SHOE REPAIRING

Get more wear from your summer shoes

Have Them Dyed NOW



Steve's Shoe Repair

140 So. 11th St. Phone 2-4544

over the plucky Panters, putting themselves in the running for 1944 Rosette Bowl.

Altho the Bloomers used the famous C(oke) formation, a great deal of the time, it was straight power that accounted for both touchdowns, and gave Coach Loisenouski her first game victory. Geraldine Junecupke, shifty freshman, was easily the offensive stand-out of the day as her plunges accounted for plenty of gains and one touchdown. She also aided in setting up the other touchdown, but it remained for vivacious 180-pound Theresa Kayfield, fleet Nebraska back, to bring the crowd whistling to their feet as her bulldog spirit and fleet running brought her sailing over the goal post for the second touchdown.

Play by Play.

On the first play, halfback Gussie Eagler attempted to run around her own right end but, upon being confronted by the entire Pittsburg line, she became confused and ran the wrong way until one of her own team members brought her down. This unfortunate incident caloused the Bloomers to lose 55 yards, which Alberta Gisslerette made up in the next play.

Gisslerette, fading for a pass, found a miraculous opening in the line, and charged down the field and over the goal without opposition. It seems that in the opening scuffle, the Panters mistaked Bobette Heins' small rolly poly self for the ball, as she went scooting around left end, and the team pounced on her en masse, putting her out of the game for the duration. As her little mangled body was carried off the field, half

Oklahoma Wins, Cinches Title?

Virtually deciding the Big Six Conference championship, was the Missouri-Oklahoma football game at Columbia, Mo., Saturday, which the Sooners won to the tune of 20 to 13. The only possible way that the Oklahoma boys can lose the title now, is by being defeated by the Nebraska Corn-

huskers, when the two teams meet at Lincoln, Nov. 27.

"Brittle" Bob Brumely was the whole show for the Sooners, as it was his sparkling offensive play, and stellar defensive play in the clinches that held the slim lead that the Sooners maintained throughout the game. Late in the second quarter, Brumely added his teams cause with a tricky 46-yard touchdown jaunt, and then added the conversion, to put the Sooners out in front 13 to 6 at the end of the first half.

Reese Standout.

Playing outstanding ball for the losers, and perhaps the most outstanding man on the field, was Don "Bull" Reese, who was the whole show for the Tigers. Both on the defense, and the offense it was Reese, who kept the pre-game favored Tigers in the game.

On the next play the range-inspired team mowed down the Pittsburg line and Roberta (Bobby) Hazardous tore down the field for 40 yards. Junecupke taking the ball on the next play, charged over the goal for a touchdown. Big Wilma Hill sent the ball soaring over the goal post as a beautiful kick pointed her toes to the sky and left her reclining on the ground.

Score: Nebraska 13, Pittsburg 0.

Minnesotan Speaks On Plant Pathology

Dr. N. C. Stakman, noted plant pathologist at the University of Minnesota, will address the membership of Gamma Sigma Delta and the department of plant pathology at the college in room 311 Monday at 4 p. m.

Take Vitamins for Better Health

50 Haliver Oil	79c
100 B Complex	\$1.98
40 Bexel Caps.	98c
Stams	49c
Vimms	49c
Groves B Complex	49c
100 A-B-D-G Caps.	\$1.60
100 Multiple Vitamin Capsules. High Potency	\$3.25
50 ABDOL Parke Davis Caps.	\$1.54

UNI DRUG
14th & S

"Authorized" Electric Shaver Service

143 So. 12 5-7864

Factory parts for Schick, Sunbeam and Remington shavers and new shavers on trade in basis \$11. Formerly located in Sharp Bldg.

Men and Women of Lincoln!

Two nationally - known concerns are anxious to locate branch plants in this community.

But the staffing of these plants will require many more people than are now known to be available for work in essential industry.

This Means —

1. Many more persons must be willing to transfer from less-essential to essential work.
2. Many women and others not now employed must be willing to take employment when offered.

It's Up To You!

Your response will determine whether or not Lincoln will obtain these new industries—both of which have post-war possibilities. The War Manpower Commission must have proof that Lincoln can supply additional labor.

TOTAL 3,000 WOMEN 750 MEN

If you are available for essential work, fill out and mail the coupon on this page—at once.

Part-time workers also needed.

This ad sponsored by the

Lincoln Chamber of Commerce

MAIL THIS COUPON AT ONCE to

Lincoln Chamber of Commerce, 208 No. Eleventh St., Lincoln, Neb.

- I am now available for essential work
- I will be available on or before May 1
- Full time Part time
- Male Female
- Now Employed in Essential Industry Now Employed in Less-essential Industry
- Not now Employed

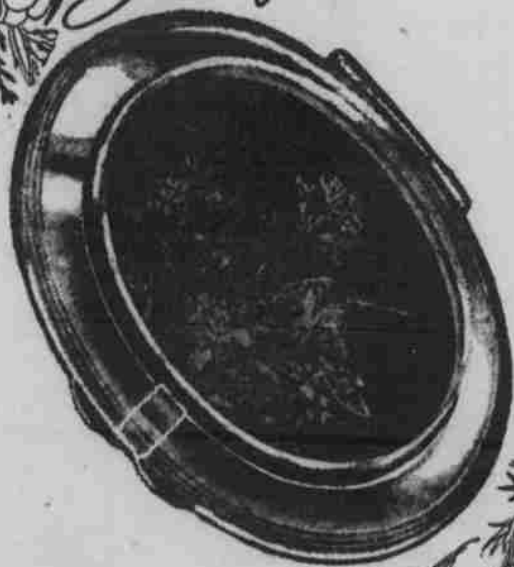
Name.....

Address.....

Town.....

If inconvenient to mail the coupon, telephone the information to the Chamber of Commerce, 2-6671

Bouquets to you!



Natural American Wildflowers

Lucite Compacts

5.00

A gift she'll treasure! This lovely compact creation. Lucite with pressed and treated living blossoms. See them Saturday!

HOVLAND SWANSON