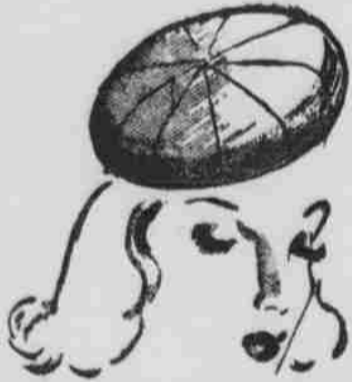


# MAGEE'S

You'll find a warm welcome in Lincoln, if you've come from away. And one of the friendliest places is Magee's. Here, you'll see coat, suit and dress fashions, millinery, shoes, sportswear and accessories that have been designed for college fashionables, and bear such famous names as:

Perry Brown Fashions  
Kirshmoor Coats  
Swansdown Suits  
Rafield Hats  
Paradise Shoes  
Tish-U-Knit Sweaters  
Miss Swanik Lingerie



## Adorable Softies

What a wonderful little hat to clap on the head at any angle . . . it looks heavenly forward, back-a-bit, or cocked over one eye. Of velveteen, corduroy, fur-felt, wool-felt . . .

Mist grey  
Kelly Green  
Purple  
Brown  
Black  
Flight Blue  
And Others.

**\$2.95 to \$3.95**

Millinery Third Floor

Advertised in Life, Vogue,  
Harper's Bazaar and  
Mademoiselle



**Life Style**

Alligator-Grain Shoes

Talk about popular! These brown alligator-grain shoes should be conceded! They're really your ration's worth of quality and campus-favorite charm!

*Fashion-Fresh* \$5.95

Ladies' Shoes—MAGEE'S—First Floor

## These "Satisfy," Too!

. . . because Chesterfield lines are flattering to every figure . . . and go through the most hectic schedules keeping you smart-looking. But these are just two examples of Magee's collections of college clothes, designed with a beautifully dressed You in mind.



**\$35.00**

The winds do blow and it does get cold but you'll be warm and smart in your Chesterfield coat of Melton cloth, tweed, fleece or covert.

To match or contrast with your coat, a suit, soft-style or classic, jives with the Fall and Winter themes, from **\$16.95**  
Other coats and suits, **\$19.95 to \$69.95**



The Chesterfield coat-dress is excellent fashion for Fall campus wear and it has a fraternal twin in a two-piece version.

Other regular and junior size fashions fulfill your urge for femininity, classic tailleur and that carefully casual look.

**\$10.95 to \$22.95**



Sweaters will always be first choice for campus wear. They're comfortable and warm and the colors this season are simply delectable! In soft, pure wool of fine, medium and heavier weaves.

**\$3.95 to \$7.50**



For interest added to suits or jumpers . . . blouses. In crepe, jersey or flannel, they may be tailored or sissy . . . whichever you like . . . and colors range from white through pastels and bright blazer stripes.

**\$1.95 to \$7.95**

Accessories — MAGEE'S — First Floor