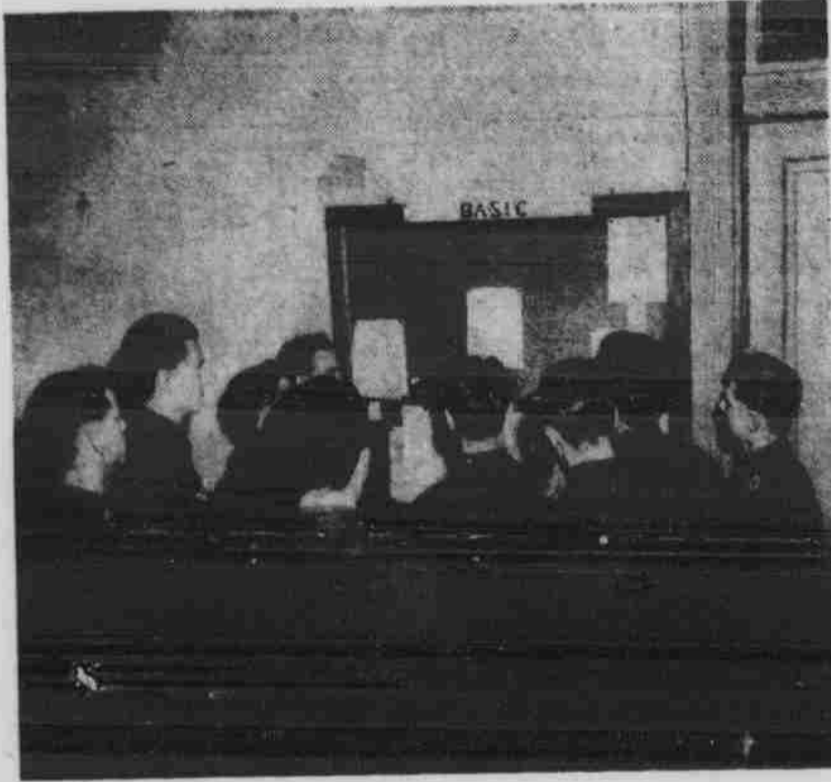


A Salute to ERC Men...

We'll See Them in Tokyo



ANOTHER carload of our reserve lads left University of Nebraska premises last week—the ERC unit. To these lads, who willingly dropped their books to do duty for Uncle Sam, this page is gratefully dedicated.

It might be the addition of this ERC strength to our good uncle's forces that will mean ultimate victory. Who knows? These lads we watched packing their clothes last week may prove the factor, the deciding factor, of this great world mess.

We all want to go back to college as soon as we settle Hitler, Hirohito and the European gangsters. These ERC lads are doing their bit for the cause. Some will come back. Others won't. Regardless, we hereby extend a hearty back-slap to all ERC men.

This page is dedicated to the Nebraska ERC men who are leaving the campus by the following Sororities, Fraternities and business houses:

- | | | |
|---|--|---|
| Modern Cleaners
Soukup and Westover | Peerless Cleaners
Geo. H. Lemon | Evans Laundry
333 No. 12 |
| The Nook
1131 E | Frey and Frey
1338 O | Delta Gamma |
| All American Cafe | Farm House | Alpha Xi Delta |
| Phi Gamma Delta | Latsch Brothers | Longs Nebraska Book Store |
| Phi Kappa Psi | Sigma Alpha Epsilon | Pi Beta Phi |
| Hamburger Inn | Theta Xi | Kappa Delta |
| Chi Omega | Zeta Beta Tau | Gamma Phi Beta |
| Delta Delta Delta | Kappa Alpha Theta | Sigma Alpha Mu |
| Frank's Barber Shop
1396 O | Continental National Bank | Alpha Tau Omega |
| Delta Tau Delta | Kappa Kappa Gamma | Lincoln Bowling Alley |
| Alpha Sigma Phi | Alpha Omicron Pi | Beta Sigma Psi |
| Sigma Delta Tau | Sigma Nu | Sigma Phi Epsilon |
| Sigma Kappa | Kappa Sigma | Phi Delta Theta |
| Alpha Chi Omega | Consumers Public Power
District | Presbyterian Foundation |
| Eastman Kodak Stores | Delta Upsilon | Alpha Gamma Rho |
| Alpha Phi | Beta Theta Pi | Sigma Chi |
| University Y. M. C. A. | | Lutheran Groups on the Campus
Rev. Henry Erck
Pastor Alvin M. Petersen |