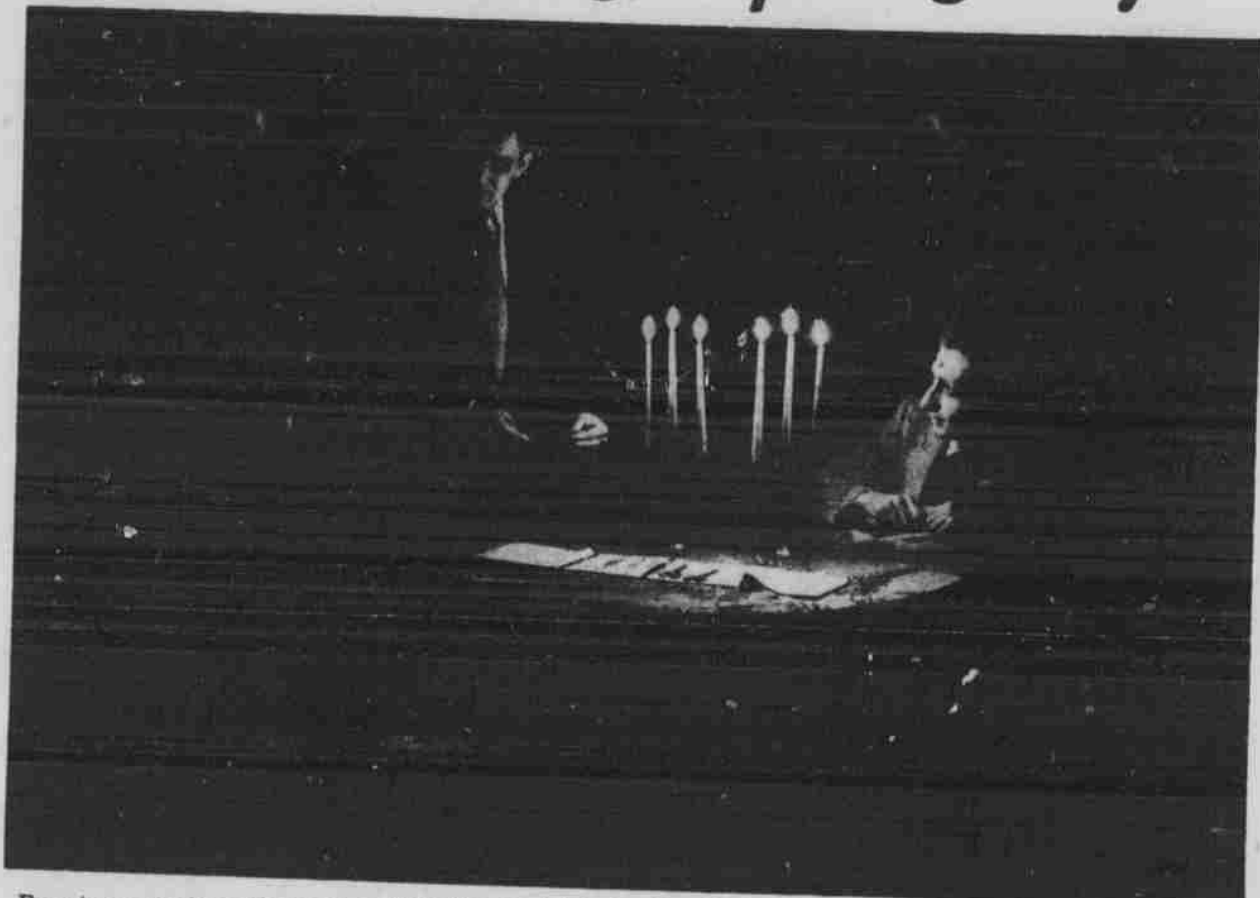


Candlelight Meeting Decides Homocide At Temple Tonight



Brewing arsenic in their tea and camouflaging corpses in the window seat, two elderly maidens with homicidal tendencies will cavort on the Temple theater boards

again tonight in the University Players' last presentation of "Arsenic and Old Lace."

Abby and Martha Brewster, played by Janice Marx and Martha Bengtson, are the two maiden

ladies in whose palatial home the murders occur. A capacity audience has watched the mystery-comedy in the first and second nights of its run, and the house is expected to be packed tonight.

Store Hours 10 A. M. to 6 P. M.
Thursday 10 A. M. to 8:30 P. M.

Thomas Kilpatrick & Co

1505-15 Douglas Street

Omaha

Dates Can Be Dazzling in

Filmy Net

Just Unpacked for
Important Holidays

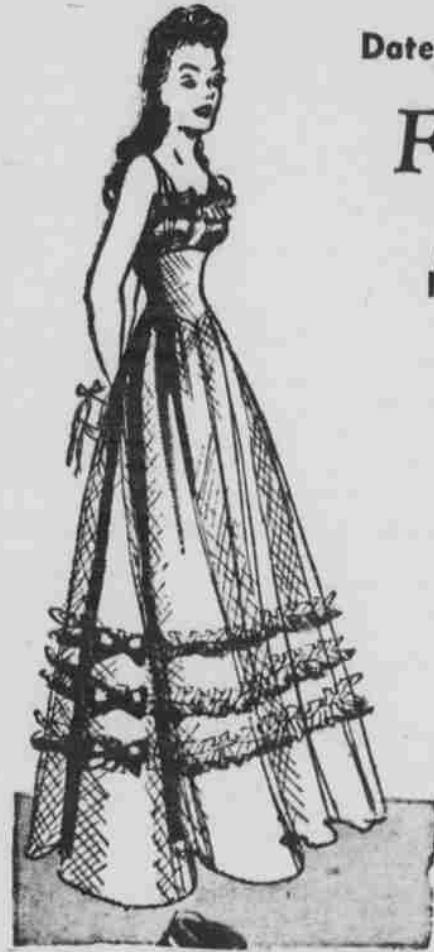
14⁹⁵

in

Very decollete but
ever so naive with
rows of shirring and
velvet bows. Oh, so
slender waistline.

Others 12.95 to 19.95

East Wing—
Second Floor



No Increase In Vacation Travelers

Same Number Students
Going Home; Facilities
Taxed Before Dec. 25

That the number of students traveling home for the Christmas holidays is no greater this year than last was revealed by Lincoln transportation authorities. It was added, however, that due to the late closing date of the university the railroad and train facilities would be taxed to the utmost during the scant two days before Dec. 25.

Officials stated that bus and train lines would do "their utmost to take care of student travel adequately." For that purpose, as many extra buses as are available have been added to the bus schedule, while train reservations have been taken as far ahead of time as the first of the Christmas month.

Thus far, no restrictions have been placed on civilian travel, altho the war department has placed a ban on more than 10 percent of the soldiers in any one unit having furlough during between Dec. 12 and Jan. 12.

Placed on all transportation since Nov. 1, a government tax of 10 percent now replaces the old tax of 5 percent, which, however, does not seem to phaze the student determined to spend Christmas holidays at home.

Railroad officials also reported that, contrary to popular supposition, girls are not traveling in vast numbers to various army posts over the country to be near their men in the services during the holiday season.

Oklahoma U. Defends Tune Of Yale Song

War has affected a lot of things on its campus, but the University of Oklahoma still clings to Yale university's song, "Boola Boola," which it has renamed "Boomer Sooner."

The fight over the song has become perennial. When President Joseph A. Brandt went to Oklahoma last fall from Princeton, where he directed the Princeton Press, he attempted to sound out opinion on changing from "Boomer Sooner" (or "Boola Boola") to a new, yet unwritten tune.

The response was not favorable. Students began to sing "Boomer Sooner" in their rooming houses after dinner instead of eating their desserts and drinking their coffee.

If SHE'S a

"glamour-girl--"

And of course, your best-girl IS!

Tell her she's dreams-come-true

with a lovely

NEGLIGEE

from MILLER'S

She'll feel like Hedy LaMarr, Veronica Lake and Ann Sheridan all rolled up in one when she wears a beautiful house gown like this . . . and she'll think you're very-special too!



Sketched at right is rayon crepe hostess house-coat that combines aqua with fuchsia . . . bright shiny nailheads trace the shoulder yoke. (12.95)

This is just one of our collection of crepes and jerseys, trimmed with satin and metallic motifs.

Sizes 12 to 18—4.50 to 14.95

MILLER'S Robes and Negligees—Third Floor

MILLER & PAINE

