

## Pink Rag, Jr.

by

Chris Petersen

BY BETTY WINN.

Now for the goings and comings and happenings of the weekend.

...Bob Sandburg and Dave Thompson, ATOs, are leaving dear old N. U. This time the army isn't taking these lads but they are off for Harvard. The brothers gave them a merry send-off...The Westover sisters, Alpha Phi, have been keeping company with the Wentz brothers Fiji boys—Pretty nice combination! Tonight at the Turnpike you'll see Jean York, Theta, with Art Mason, Sig Chi. Also Jean Buckley, Theta, with Dick Petring ATO....

The Farmhouse actives were given a party by the pledges which turned out to be quite an affair. Seems as though one active Harold Hansen who was assisting the pledges in their trouble making was taken aside by some of the seniors. Their destination seemed to be somewhere in downtown Lincoln and Mr. Hansen, not being dressed for cold weather, ran home like a shot of lightning....

Seems like Wezy Lefler KAT and Gene Walters pride of the Theta Waiters are hitting it off pretty steady these days. Nice going Rabbit.... Howie Mengshol Phi Gam and Mary Aileen Cochran Theta are back on the date wagon. Been quite a spell since they have been occupying the Union once again over a beverage....

Phil Morgan, Phi Psi, and Polly Petty, Alpha Phi, are in pretty constant company. Seems like the Phi Psi's are really doing right well in that league....Seen at the Delt Formal last night were Shirley Heldt and Max Wilson, a couple of old steadies, Mary Bird and Charlie Shubert, and Jo Beckley with Claude Wilson, ATO.... Congrats to Bob Smith from California who pledged ATO Saturday....

Much importance lies in the kind of photograph you attach to an application. Townsend quality should be given first consideration. Studio, 226 So. 11.—Adv.

Funnier, crazier, funnier and loonier than the stage show is Hellzapoppin' at the Stuart theatre NOW! Adv.

## First Aid Classes Begin as Soon As Texts Arrive

The first aid classes sponsored by the National Defense Committee in room 313 of the Union, will start as soon as textbooks arrive, according to Pat Lahr, Union social director. Students who have registered will receive postcards notifying them when the classes will start.

The section will meet from 4 to 6 p. m. Tuesdays will be instructed by Miss Dorothy Zimmerman of the physical education department, the Wednesday night session from 7 to 9 by Mrs. M. W. Miller, swimming pool attendant, while Melvin Tannenbaum will be the instructor from 4 to 6 p. m. Thursdays.

Running for ten weeks, the classes include twenty hours of instruction with a two hour examination. Those passing the exam will be given a Red Cross first aid certificate.

## Leon Davis New AICE President

Leon Davis was elected president of the University of Nebraska chapter of American Institute of Chemical Engineers for the second semester. Other newly elected officials of the AICE are as follows: vice president, R. C. Feber; secretary, William Fuller; treasurer, George Sukovaty.

## Weaver . . .

(Continued from Page 1.)

feel that there is no finer way by which we could initiate Greek Week than by having Dr. Weaver speak to us at church night. The committee wishes to thank the First Presbyterian Church and Miss Grace Finch, organist, for the help they have given us in preparing this program."

The church service opens a full week's activities. No programs have been planned for Monday because of sorority and fraternity meetings. Interfraternity council will meet at 5 p. m. Tuesday and Wednesday the sororities and fraternities will meet for seminars helpful to officers, actives and pledges.

Wednesday noon fraternity faculty members will meet for a luncheon and that evening the actives and pledges will have dinner together at the Union. Thursday sorority actives will have dinner at the chamber of Commerce and pledges will eat in the Union.

Greek Week will be terminated by the Interfraternity Ball at which Al Donahue's nationally known band will play.

## Leaders Believe . . . Gals Should Concentrate On Less Conspicuous Work . . . In War Effort

A woman's place in the challenge of today consists of more than wearing a victory lapel decoration, joining a class in first aid, or knitting a sweater or two. That opinion was brought out in the home economics sessions of Organized Agriculture at ag college in this past week which dealt with many factors less conspicuous that help determine the outcome of war.

"The long-time view of women's job in peace and war is that they must constantly work to instill high moral values in their children," said Mrs. Raymond Sayre, member of the National Civilian

Defense Committee, "The home is one of the first and foremost fronts on the battle line, since civilian homes now have become military objectives and the confusion among civilians has become a military weapon."

### Immediate Contributions.

Immediate contributions which women can make to the war effort are production of food, saving and spending money wisely, and making adjustments to the changes that will come rapidly.

"Women must help to win both the war and the peace which will follow," Mrs. Sayre pointed out. The peace settlement will involve

decisions on supplies of raw materials and other economic considerations, but moral values of the leaders will determine whether the economic decisions are just and contribute to lasting peace.

### Optimism Present.

A tone of hopefulness was prevalent in the series of discussion groups and demonstrations at ag. Mrs. Ray Rice emphasized the importance of not being impatient and discouraged and the value of building and preserving health, especially within the home. That there will be a definite shortage of farm labor which women will be called upon to fill was one of the significant topics of discussion.

All Makes of Typewriters  
Special Student Rates  
BLOOM TYPEWRITER  
EXCHANGE

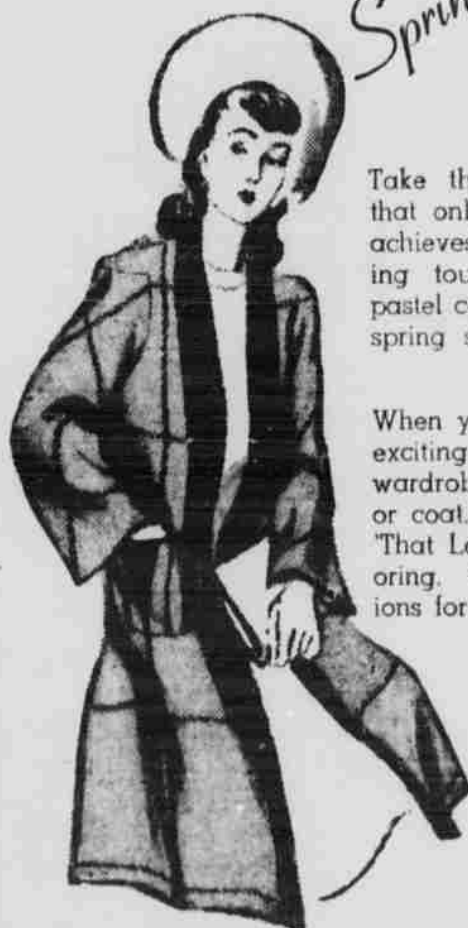
Phone 2-5258

129 No. 11

As featured in your February 'Mademoiselle' . . .

Leeds Look

Spring Tailored



Take the casual elegance that only faultless tailoring achieves, add the skylarking touch of dawn-tinted pastel color . . . voila, your spring suit or coat, by Leeds.

When you are planning the first exciting essentials of your spring wardrobe, start first with a suit or coat. Mademoiselle suggests 'That Leeds Look' in spring tailoring. Choose your Leeds fashions for spring at Magee's.

\$25.00

Fashion Center . . . 3rd Floor

MAGEE'S

Carefully  
PASTEURIZED  
FAIRMONT'S  
pasteurized  
MILK

Order from your Grocer  
or have it delivered



BUY TICKETS NOW

for

"HIGH JINKS"

Red Cross War Fund Benefit  
12 Act Vaudeville Show

Presented by UN Students

3:00 & 8:00 P. M., Sat., Feb. 14

30c

See A Tassel or  
Corn Cob

Your **DOLLAR**  
BUYS MORE

When you buy the

**DAILY NEBRASKAN**

\$

buys you all the news, features, sports, society, announcements, pictures, and columns for the rest of the year!

Know What's Going On—Read  
the Daily Nebraskan

Buy Your Subscription at Stand in Sosh or at Daily Office!