

Socially Speaking

Jo Duree



Notations in the book . . .

On the Military Ball, why say anything . . . you were there . . . or anyway a goodly crowd crowded and the military dept's little get-together is strictly one for the book . . . it takes rush week and the Military Ball for us poor mortals to discover that Nebraska gals are strictly not a bad looking bunch . . . the Ak countesses who showed up in their countessing frocks were gorgeous . . . the attractive Honorary Colonel didn't have the usual lass worry because there was a sure cinch no one else would show up in an identical outfit . . . and then there's a note

On the Sig Nu pigge dinner . . . an elegant affair for sure . . . Bill Stuhlt and KKG pledge Phid Hoffman who lingered a year at Lindenwood before lighting at Nebraska, really seem to be reviving a friendship which dates from grade school days . . . the pledge over at the Nu house whom a number of lasses have their eye on, Chad Chandler, was about with Catha Smith . . . and there was also a pigge . . .

The Delta Upsilon and the Kappa Alpha Thetas are really friendly these days . . . we understand that Harry Ankeny who goes steady with Theta pledge Marian Linch has been developing a sis-

terly feeling for Marian's pledge sister Ardis Lyman and takes her over to the DU house occasionally . . . perhaps with seeing DU pledge Bill Fahnstock in mind . . . Ardis and Bill have been seen together. Anyway, it's a possible explanation . . .

Speaking of notes . . . seems a major—militant soul that he is—took note of a license which was stalled atop a hill which the military department considers its very own for maneuvering purposes. . . the souls who accompanied the major are inclined to claim that one of the car's occupants was Marg Krause which we're inclined to doubt . . .

Oh yes, notation to a couple of lads who are interested . . . Chio Jeanne Meier has quit this steady going business . . .

And we must make a note to suggest to Viscount Francis that nobody's girl of the week should be brainless . . . and suggest also that Forrey Behm's lass, Alpha Phi Betty Groth, would fit the picture . . .

Note on Alpha Phi: Pep Queen Jean Christie is still plenty happy about the birthday song the ATO's concocted and dedicated to Jean and ATO . . .

And note . . . beat out a column, Duree . . .

'Invalid'—

(Continued from page 1.)

a young doctor with an eye toward having his medical expenses cut. Toinette and the daughter, played by Louise Lemen, bring the play to a climax with their successful attempt to foil the father's plans.

• Play addressed to audience.

The dramatic action of "Imaginary Invalid" is frankly addressed to the audience with no attempt to create the illusion of realism sought by more modern plays. It has long been recognized as a keen satire on the social and professional conventions of the middle 17th century and brought Moliere

fame as one of the world's greatest satirical dramatists.

The cast of characters is as follows:

- Monsieur Ardin Jon Pruden
- Toinette Ruth MacMillan
- Angelique Louise Lemen
- Beline Jane Kinder
- Monsieur de Bonnefol Jack Hendrix
- Cleante Glenn Nelson
- Monsieur Defois Neale Morrow
- Thomas Defois William Green
- Louise Ann Beard
- Beralde Clarence Flick
- Monsieur Fleurante Cecil Richmond
- Monsieur Purjon Romulo Soldevilla

ALL MAKES OF
TYPEWRITERS FOR
SALE OR RENT
NEBR. TYPEWRITER CO.
130 No. 12th 2-2157

Barb Union meets Tuesday

The problem of university finances and possible lowering of educational standards will be the center of discussion of the Barb Union at its regular meeting Tuesday. "The editorial of the DAILY NEBRASKAN will be discussed pro and con, and a stand taken

regarding its implications," predicted President Blaine Sloan.

Ray Murray and Sloan will report on the appeal to the university senate regarding the election of Nov. 12. Murray will present the results of the Student Council investigation of employment conditions.

Morrill has student art exhibit from Chicago

Now hanging in Gallery B, Morrill hall is a student exhibition

from the American academy of art, Chicago. The academy, primarily a school of commercial art, has sent some of its best pieces of student work, including lettering, layouts, advertising, illustrations, fashion drawings, and dress designs.

More than 60 coeds stormed the aeronautics department of the University of Minnesota to enroll for flying courses, but only five could be accepted.

IT'S CHRISTMAS TIME AT SIMON'S

Give Him Something He Wants
But Won't Buy for Himself!



Luxurious Robes

Rich colors in plain shades and striped patterns. Completely interlined with celanese rayon. . . true luxury.

\$9⁹⁵ . \$12⁹⁵ . \$14⁹⁵

Chenille Robes

A new innovation in men's robes. Soft as a "kitten's ear" . . . very good looking . . . plain colors and hair lined stripes. Maroon, green, navy and camel. These are spot resistant.

\$5⁹⁵

Gabardine Robes

Here's the gift sensation of the year. A warm without weight robe that will definitely please him. Four beautiful shades with pipe trim. . . maroon, navy, green and camel.

\$5⁹⁵ . \$7⁹⁵ . \$9⁹⁵

Wool Flannel Robes

All wool flannel robes that are a favorite robe with men. Meticulously tailored in a choice of plain colors and new striped patterns.

\$4⁹⁵ to \$9⁹⁵



Cocktail Jackets

Most likely he doesn't have a cocktail jacket, and most likely he has plenty of chances to wear one. Celanese rayon lined jackets. . . all wool flannel jackets. . . gabardine jackets of spun rayon.

\$5⁹⁵ to \$9⁹⁵



House Coats

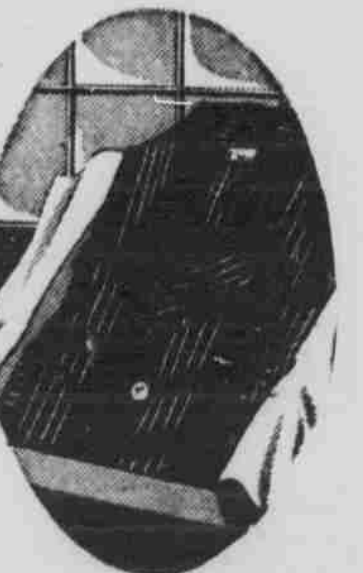
Wool house coats in gray, brown, navy and wine, with corded edge trim. Sizes 38 to 46.

\$5⁹⁵

Pajama and Robe Sets

Robe and pajamas to match in the same material. A grand combination that he'll like.

- Crown Test Rayon—Plain Colors. . . \$8.95 Set
- Fine Sateen—Plain Colors \$7.50 Set
- Broadcloth—Striped & Figured \$5 to \$6.50 Set



Men's Lounge Suits

Jacket and pants of all wool flannel and wool and rayon gabardine. Just the suit to loaf around in.

\$10⁹⁵ . \$12⁹⁵ . \$15

The University of Nebraska
School of Fine Arts

THE UNIVERSITY THEATRE

PRESENTS

THE IMAGINARY INVALID

Moliere

December 11, 12, 13 Wed., thru Fri.

Temple Theatre, 12th & R Sts.

7:30 Each Evening — Admission 25c-50c

They're Terrific Together!



CAROLE
LOMBARD
CHARLES
LAUGHTON
in an RKO Radio Picture

"They Knew What They Wanted"

ADDED!
INFORMATION PLEASE
PICTURE PEOPLE
LATEST NEWS EVENTS

NOW SHOWING!

VARSAITY

Ben Simon & Sons