

## Cornhusker Field Company ... Begins enlistment drive for spring combat problems

The Cornhusker Field Company, under the direction of Maj. John Ayotte, has begun its enlistment drive for this spring. Each spring the company puts on a series of combat problems in the field, and has lectures and demonstrations to aid military science students in getting a practical, as well as theoretical, knowledge of the subjects covered in the regular military classrooms.

There will be a meeting of the field company tomorrow at 9 a. m. in Nebraska hall. Interested military science students may report at this time. A program has been made out for indoor work until the weather permits outside field exercises.

### No close order drill.

The field company is a unit organized for field service and there is no close order drill in its schedule. The company is normally composed of approximately 100 men, who form a headquarters platoon and three rifle platoons. The company officers this year are Joseph Fraser, captain; Robert Nelson, executive officer, Ralph Reed, Charles Pillsbury, Robert Pillsbury, and John Folsom, platoon leaders.

Infantry sophomores find the

outdoor experience an aid to their regular classes in combat principles and scouting and patrolling. Juniors receive instruction and practice in field problems like those they will have in summer camp, and seniors have an opportunity to handle men in the field.

The field company rates high in the military department. Two colonels, and a number of other officers are included in its membership.

## Opinion—

(Continued from Page 1.)

A small group of 2 percent said, "Neither."

Men and women students show practically the same preferences, although there are more boys than co-eds who still like swing. When the ballots were tabulated by sexes these were the results:

	Men	Women
Swing	38%	30%
Sweet	64	69
Neither	3	1

Although the size of the majority varies from section to section over the country, swing got less than half of the votes everywhere:

	A	B	C
New England	43%	57%	0%
Middle Atlantic	35	64	1
East Central	22	75	3
West Central	30	68	2
Southern	35	62	3
Far West	35	64	3
U. S. Total	32	66	2

\*A—Swing; B—sweet; C—Neither.

## Rehearsal—

(Continued from Page 1.)

posed of John Mason, Robert Sandberg, and Lynn Myers. Warren Brainard was cast as the pedler, with Harold Swan as his second. Howard Lynch who played the part of President Roosevelt in last year's production will be played by Robert Lynch.

Committees appointed by the club to take care of the preparation of the show are: scenery, Clyde Martz and Dwight Burney; program, Bob Aden and Don Sherman; costumes, Ralph Reed and Carl Harnsberger; tickets, John Mason; properties, Leo Cooksley and Elton Wiley; theatre, Orval Hager and Jean Wolf; publicity,

Dick deBrown and George Frischer.

With the announcement of the two casts Director Hunter said, "No laxness or slovenliness on the part of the actors will be tolerated. Any participant who fails to measure up to the highest standards in either ability or cooperation will be dropped from the cast. Member of the alternate cast with the same part will step into the delinquent person's role."

A take-off on the Russo-Finnish war, the show tells of the adventures of the Fans (Finns) when they try to steal the vodka of the Rush (Russians) after the latter had successfully stolen their skis.

## Reporter—

(Continued from Page 4) sororities and live in the house they pledge. That many girls living together could surely cause a riot.

Ruth Grant, Ag, Freshman  
Just picture, if you can, actives answering the phone. Besides it would be too crowded.

Orpha Mae Johnson, Teachers, Freshman

Some girls won't be able to afford this and for that reason might go elsewhere to school. I can see no logical reason for this act.

Zoe Wilson, A&S, Freshman  
After all aren't people of college age old enough to know what the score is? They should be able to choose their own dwelling.



Why Not a New Spring Frock?

FEELING down-in-the-dumpish? Don't care whether school keeps or not? What you have is early symptoms of "Spring Fever." There's one sure cure . . . a smart new frock from our Spring collection. We have them in fascinating new prints, in plain colors. In dark shades and in heavenly pastels. With jackets and without. And priced at a pittance, just

12<sup>95</sup>

LOCALLY OWNED • LOCALLY CONTROLLED  
**GOLD & CO.**  
WE GIVE S & H GREEN STAMPS.

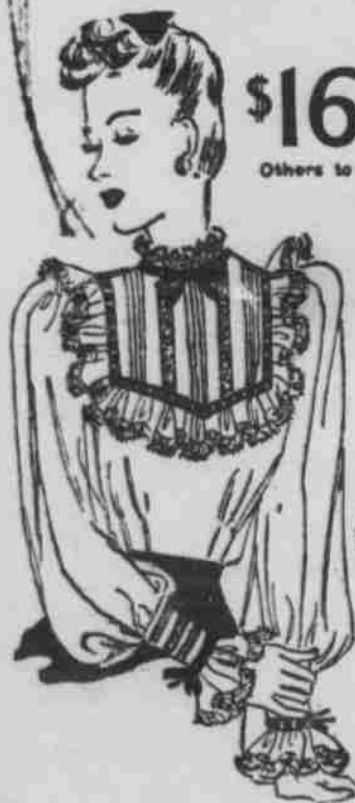
MAGEE'S Spring

# Dressmaker Suits

• Salute the dressmaker suit . . . it's the focal point of your spring wardrobe . . . right for now, right for later, right all the time. They're soft . . . they're feminine . . . and so many fabrics and styles at Magee's . . . at such pleasing prices.



\$16<sup>95</sup>  
Others to \$29.50



### Blouses

• With your suit, your blouse is very important.

\$1<sup>95</sup>  
to  
\$5<sup>95</sup>

Sizes  
9 to 17  
10 to 20

Third Floor

**MAGEE'S**  
QUALITY WOMEN'S WEAR  
LINCOLN

—Third Floor.