

# Love, Northeast halls increase women's dorm capacity to 370

## 1932 dream becomes a reality

Carrie Belle Raymond hall is largest of three units now completed

Years of dreaming and agitation on the part of women's organizations for proper housing facilities for students have borne fruit, for two weeks ago the first day for moving into and living in Julia L. Love Memorial, Carrie Bell Raymond, and Northeast halls finally came for the 370 girls who will make the dormitories their home this winter.

Other girls were moving into Carrie Belle Raymond, the first women's dormitory to be built. The situation was not always thus for in years back the girls—as the boys still do—lived in university supervised rooms. Loneliness and poor adjustment to new manners of life a by-product of the existing system led women's organizations to agitate for better living conditions.

Dreams begin to become real.

While talk cost nothing, funds were hard to obtain, but in 1932 the castles in the air began to assume reality when Carrie Belle Raymond, built to honor a long-time instructor in the fine arts department was erected and opened to the girls.

Today, the three red brick, stone trimmed buildings, characterized by an atmosphere of charm and dignity, stand as a living monument to the dreams of those who worked so that those who followed them might live under better conditions than those which were provided for the students of their day.

Inside, furnishings and colors throughout the buildings have been selected for harmonious combinations. The walls of the new units are combinations of gray-green, grayish tan and light coral.

Harmonious color combination.

Furniture in the main reception or lounge rooms is done in bleached walnut; the colors of the upholstery blending with the rust colored rugs. Lighting fixtures are of light statuary bronze.

Smaller lounges on each floor have rugs of grey-green or rust color with the upholstered furniture done in keeping with the rest of the building. Lighting fixtures, except those in the main reception rooms are eighteenth century Georgian colonial style.

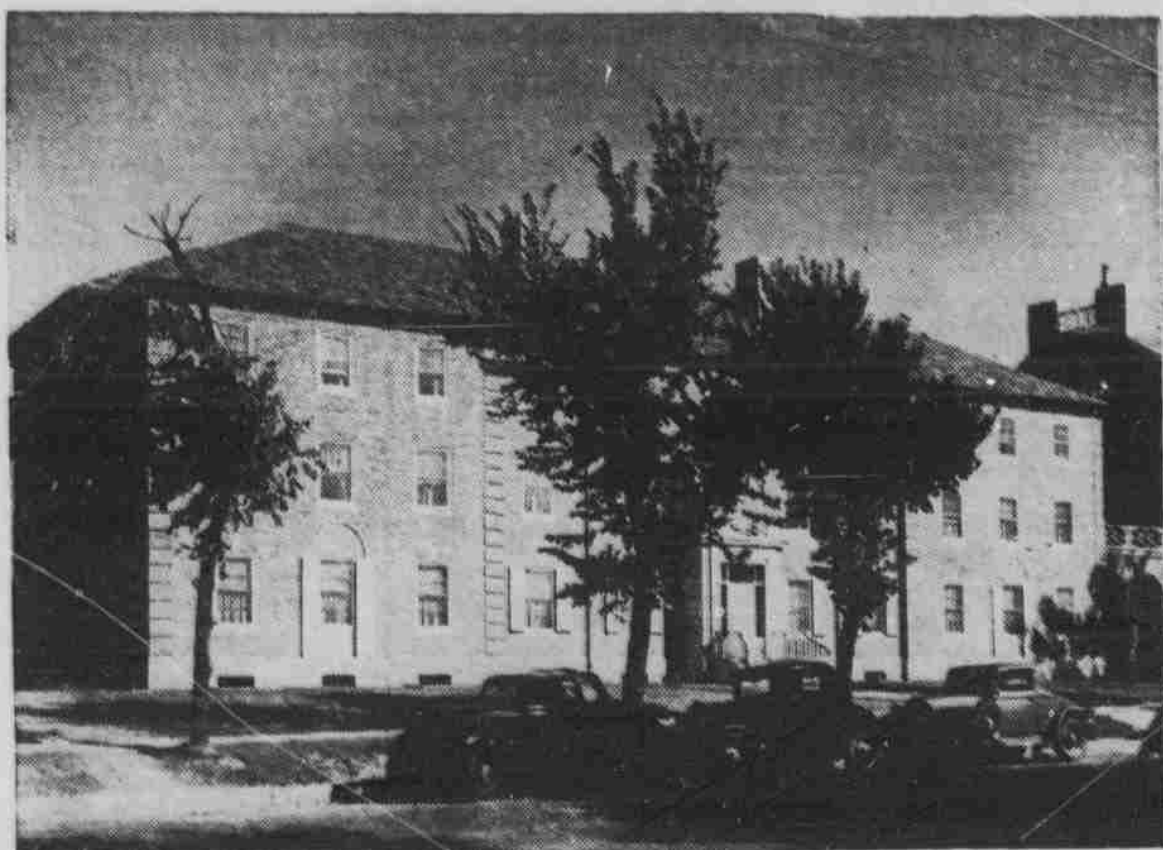
A new glassed in sun-porch converted from the open porch at the north end of Raymond Hall is furnished with light grey-green carpet rugs, wrought iron furniture, glass topped tables, and upholstered pieces. The bedroom furniture is done in the same style as that in Raymond Hall—early American birch.

The two new units, similar in floor plan and general character have been planned so that each has an individuality of its own. Entrance from Carrie Belle Raymond to both units is provided by closed heated passageways on the first and ground floors.

Love hall houses 96.

The Julia L. Love Memorial, housing 96 girls will be a perpetual memorial to Julia L. Love, the wife of Don L. Love. It was through the generosity of Mr. Love, former mayor and prominent citizen of Lincoln who made a gift of \$55,000 to supplement a PWA grant, that those interested in better housing for women were enabled to bring their dreams nearer realization.

Present plans call for dedication of the hall to be held at a formal ceremony at 3 p. m. Sunday, No-



Eighteenth century Georgian Colonial architecture used in both the Julia L. Love Memorial and Northeast dormitories.

vember 5. Northeast Hall the other new unit will accommodate 108 girls.

Has many advantages.

Both of the new dormitory units are efficiently planned to utilize them to the fullest advantage. The ground floor in the new units has a laundry room and a shampoo room both of which are fully equipped. In addition the ground floor in Northeast Hall has six student rooms, all above ground; a bathroom, an infirmary; and an attractive lounge. Julia L. Love Memorial Hall has large recreation and study rooms, both of which are available to students in both units.

The upper floors of both of the new units are similar in plan and arrangement. Parlors, kitchenette, director's suite, student rooms and a bathroom are found on the first floor. The second and third floors are given over to student rooms in both residences. In addition to student rooms these floors are provided with charming lounges, modern bathrooms, and well-equipped kitchenettes.

Hendy supervises program.

The residence hall program, seeking to eliminate those features which made the old system so bad, is under the supervision of the social director, Miss Katherine Hendy. The program seeks to promote mental and physical health, encourage scholarship, develop qualities of leadership among the residents, and provide an adequate social life.

Miss Hendy, formerly assistant dormitory counsellor at Stephens College, is a graduate of North Platte high school. She has attended Northwestern University, Stephens College, and the University of Nebraska. She holds two degrees from Nebraska.

Management of the all important phase of living—housekeeping and cooking is under the direction of Miss Hortense Allen. Miss Allen a member of the university faculty, has served in this capacity ever since the dormitory system was inaugurated.

Girls do daily housework.

A high standard is maintained in both the preparation of meals and the execution of housework. Maid service for weekly house cleaning is provided, but the residents are expected to clean their own rooms every day.

Every girl living in the three dormitory units is a member of the student organization. This organization is planned and carried out by the girls with the help and advice of the social director. Policies of the organization are formulated by the group after they are presented by house committees composed of officers elected by the group. Every girl is given an op-

portunity to serve on a committee, and is encouraged to take part in house activities. Every resident is eligible for election to some office on the house council.

All of the girls living in the halls are under the supervision of the AWS board which governs all university women. In addition all girls are expected to obey certain special hall regulations which have been set up.

Co-operation gives good program.

Co-operation, is the keynote in the working out of a well balanced program. The social program, for example, which is worked out by the girls with the advice and guidance of the social director contains formal dances, informal hour dances, music at the dinner hour, carols at Christmas and many other features.

Listed among the traditional parties, which have grown up since Carrie Belle Raymond was built in 1932, are: the Christmas party, the May morning breakfast, senior dinner, and birthday dinners. Informal pajama parties are also held.

Girls participate in the regular intramural tournaments. Four private tennis courts are provided for those who like that sport. The courts are behind the halls.

3 dorms house 370.

Now with the completion of the two new units, the dreams of those who agitated for better living quarters for women have come true—at least in part. The three dormitories hold 370 women.

The remainder of the unaffiliated women students still live in university sponsored co-operative houses and university approved boarding houses—as do the majority of the men. For these students the future holds a promise—or at least a hope that the progress which has already been made will be overshadowed by future developments.



Meals come from well-equipped kitchenette.



"Washing out" is a necessity in a girl's residence.



Miss Katherine Hendy, social director, greets two students who will live in the dormitories.



All the comforts of home can be found in a typical single room.



Units connected by winter warm arcade.

—All cuts courtesy Lincoln Sunday Journal and Star