

*** on ag campus ***

Burr greets ag freshmen at convo

New class shows slight increase over last year with more than 300

More than 300 college of agriculture freshmen, about 160 men and women, heard Dean W. W. Burr and Miss Margaret Fedde welcome them to ag campus Monday morning at the special freshman day program. This is a slight increase over last year's first year registration at ag.

The new students, who first attended the general university convocation at the coliseum, were told by Dean Burr that they would find ag campus a fitting preparatory field for their future lives, and that they were availing themselves of an opportunity to widen their outlook.

Miss Fedde, chairman of the home economics department, pointed out some of the objectives of home economics training and outlined new home economics fields.

Prof. C. C. Minter presided and Mrs. Altina Tullis led group singing.

In the afternoon the new students were taken on tours of the campus by faculty members. They inspected experimental projects and got acquainted with the campus arrangement. Short discussions on registration were given by Miss Mary Guthrie and Dr. C. C. Wiggins.

Ag coeds to have own athletic field

Increasing enrollment necessitates new plan

Coeds attending the college of agriculture this year will have a specially equipped athletic field for their own use, according to the physical education department.

A field approximately 150 by 300 feet has been laid out just south of the college activities building, and is being seeded and equipped for soccer, softball, and any other outdoor games included in the girls' physical education curriculum.

Constantly increasing enrollment has necessitated the enlargement of facilities. Girls' classes will now have their own outdoor field as well as a section of the gymnasium. Tennis will again be included, along with regular gymnastic work.

The new field was formerly used by the horticulture department for experimental garden plots. It has been graded and levelled, and will be ready for use soon after classes begin.

Dr. Arthur Peterson accepts ag faculty post

Dr. Arthur W. Peterson, Nebraska graduate in 1934, has accepted a position in the department of rural economics as instructor in farm organization and management, it was announced today. He will take the place of Arthur W. Mediar, who died in February.

Dr. Peterson, who was granted his Ph.D. at Cornell in 1938 in the department of agricultural economics and farm management, will have classes in farm management and farm accounts at Nebraska, and will also teach an advanced farm management course for graduate students, in addition to doing research work.

In his thesis for his Ph.D., Dr. Peterson studied economic and physical factors related to fire losses in rural sections of New York state.

Three join home ec faculty

Misses Otis, Stullken, Roethe take up duties in kitchen, laboratories

Three assistants have been added to the staff of the home economics department. They took up their duties early in September.

Two assistants in the institutional administration division have been appointed. Miss Catherine Roethe of Stout Institute, Menomonie, Wis., is serving as an assistant cafeteria director and will supervise the laboratory work in institutional administration foods classes. Miss Edna Stullken of Kansas State, Manhattan, Kas., will serve as an assistant cafeteria director. They will assist Miss Ruth Lushy, head of the division.

Miss Grace Otis of Washington State College at Pullman, Wash., has a graduate fellowship in nutrition research. She will assist Dr. Ruth Leverton.

Other changes.

Changes in the agricultural faculty:

Arden F. Sherf, Minnesota graduate, has accepted the position of graduate assistant in plant pathology. He will do work for an advanced degree and study ring rot and bacterial wilt of potatoes.

Frank Miller, member of the staff of the rural economics department, will study for a Ph.D. at Cornell this year. He held the position of field assistant in rural economics at Nebraska.

Fred Bortfeld, who received his Master's from Nebraska in 1939 and had been a member of the rural economics department staff, has been appointed assistant professor of agricultural economics at North Dakota Agricultural College at Fargo, N. D.

Graduate accepts ag teaching post

Jesse E. Livingston to work with Dr. Gross

Jesse E. Livingston, who received his B. Sc. degree from Nebraska in 1933 and his M. Sc. in 1935 in plant pathology, has accepted an appointment as assistant plant pathologist. It was announced today. He will work with Dr. R. W. Goss, plant pathologist, and Dr. J. H. Jensen, associate pathologist.

Decision to enlarge the staff in this department was described as an effort to cope with the steadily increasing volume of diseased plants received by the college for identification in the last two or three years, along with any requests by mail or telephone each day for information on control of various diseases. This action will permit the department to devote much more time to important research designed to discover the cause and means of preventing various crop diseases.

Livingston, a former resident of Nehawka, Nebraska, has been

Countryman staff to meet Thursday

Ag students prepare for October 7 issue

Cornhusker Countryman staff members will hold their first meeting of the present semester Thursday afternoon at 5 in ag 302.

Plans for the coming school year will be outlined, and assignments made for the first issue, which will be ready for distribution October 7.

All ag students interested in working on the Countryman this year are invited. Students not now staff members, but who wish to apply for positions, will be given an opportunity to take assignments on the first issue, and work toward staff appointments.

working on a doctor's degree at Missouri University, where he had a research fellowship and did work on breeding winter barley varieties resistant to smut. At Nebraska he will assist in research projects on bean and potato diseases.

THE NUT HOUSE

118 No. 13th

NUTS FROM ALL OVER THE WORLD

They are Freshly Roasted. Not Toasted. Special Attention Given to Party Orders

Hot Buttered **REDSKINS** 1/2 lb. 10c

"EAT MORE NUTS FOR ENERGY"



Sketched in "Yokes On Me," chipper little plaid with crisp collars and cuffs.

CAMPUS REQUISITES
BY Mary Muffet

10⁹⁵

If you must be smart at school (and we don't altogether mean scholarly), then pack Mary Muffets in your school trunk and have a semester you'll remember forever.

We have a whole new crop of these clever easy-going Mary Muffet Originals which happily fit figger and fortune.



GOLD & CO.

A Cordial Welcome

To the freshmen as well as upper classmen. We hope to have the pleasure of serving you.

FINE LAUNDRY and DRY CLEANING

IT'S PHONE 2-3377
Speiers' LAUNDRY-CLEANING

340 So. 11th Street

Want football managers

Sophomores and freshmen wishing to become football managers are notified to report to Senior Football Manager Richard McClymont at the north dressing room of the east stadium.

Men most wanted are those who don't have classes after 3 o'clock more than one day a week, and those who have scholastic standings of average or better. All those interested are asked to report today.

AUTHORIZED SCHICK SERVICE

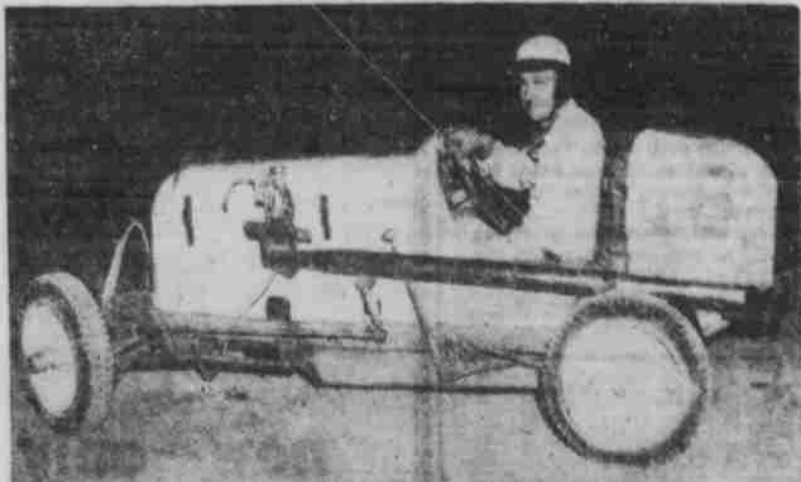
\$2.75 to \$3.75 Allowance for Straight Edge, Safety or Electric—Trade—New The New 1939 SCHICK "CAPTAIN" \$9.75

ALLIED ELECTRIC CO.

2-5581 204 So. 13th St.

MIDGET AUTO RACES

STATE FAIR GROUNDS RACE TRACK



Student Nite Fri., Sept. 22

Special Student Price Identification Card Must Be Presented **25c**

TIME TRIALS 8:00 P. M.



"Music of Yesterday and Today" played by

BLUE

BARRON

And His Orchestra In person

FRIDAY SEPT. 22

TURNPIKE

50c each. Admission at door \$1.00. Tickets on sale at Dartmouth Hotel Co., 1506 "N" and University Drug Co., 500 No. 14th St.