

GOLD'S Presents ...

# Campus 'Musts'

major in fashion—minor in prices!

SMART AS A PHI BETA KAPPA! . . . . .  
SPIRITED AS A COLLEGE CHEER, THESE  
1939 EDITIONS OF OUR FAMOUS  
"NUMBER ONE" CAMPUS FASHIONS  
ARE DESTINED TO TAKE FIRST PLACE  
IN YOUR CAMPUS WARDROBE! YOU'LL  
THRILL TO THEIR CABLE-NEW STYLING  
. . . AND GAY YOUNG LINES . . . AS WELL  
AS TO THEIR TINY PRICES!

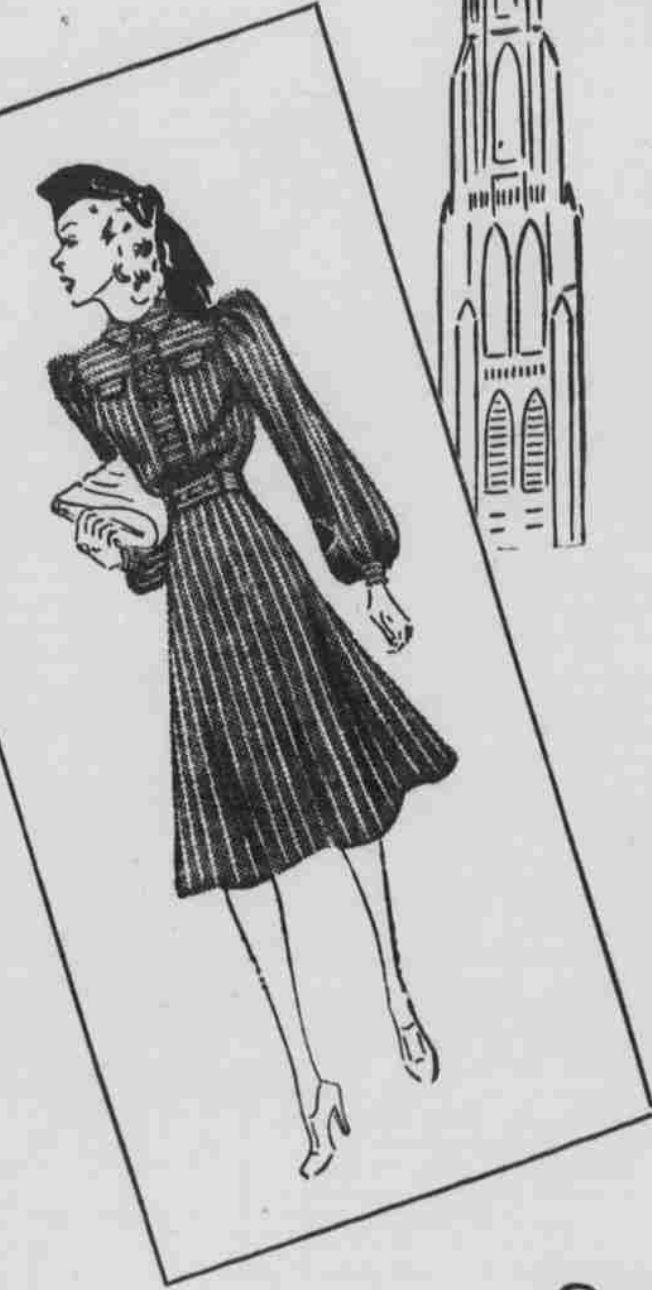


**WARDROBE SUIT** . . . all wool top coats, 2-pc. cardigan suit. Tailored by herbrooke in brown, green, teal, black, navy. Sizes 12 to 20. . . . .  
16.95 to 29.50

**CLASSROOM HONORS** . . . Cashmere wool jersey frock with tailored pockets. In blue, rose, artichoke green. Sizes 11 to 17. . . . .  
10.95

**TAILORED REEFER, CLASS OF '40** . . . of all wool multi-color tweed, tailored on double-breasted lines. Black, brown, wine, with multi-color combinations. Velvet or self collar. Sizes 12 to 20. . . . .  
19.95

**NINE O'CLOCK CLASS** . . . Tailored two-piece wool frock with flattering pleated skirt. New long sleeves. You'll like its day-long adaptability. Sizes 8 to 17. . . . .  
6.95



**SLOPPY JOE** Cardigan combines with all wool Shetland blend slip-overs for school. . . and they're taking the Campus by storm! Sizes 32 to 40 . . . . .  
1.95-3.95



**SWING ALONG** in wool skirts of wine, green, rose, plum, blue, brown and black. Gored or pleated. Sizes 24 to 32. . . . .  
1.95-3.95

**TWO-TIMER** . . . a reversible rain-coat for rain or shine weather. In tweeds or plaids. Sizes 12 to 20. . . . .  
7.95 to 12.95

**COLLEGE CUT** . . . new lumberjack top and swirl skirt. 2-pc. Corduroy Match-Makers in green, blue or wine. Sizes 12 to 20.

Lumberjack . . . 3.95 Skirt . . . 2.95



Kampus Korner—Third Floor.

LOCALLY OWNED • LOCALLY CONTROLLED  
**GOLD & CO.**  
WE GIVE S & H GREEN STAMPS