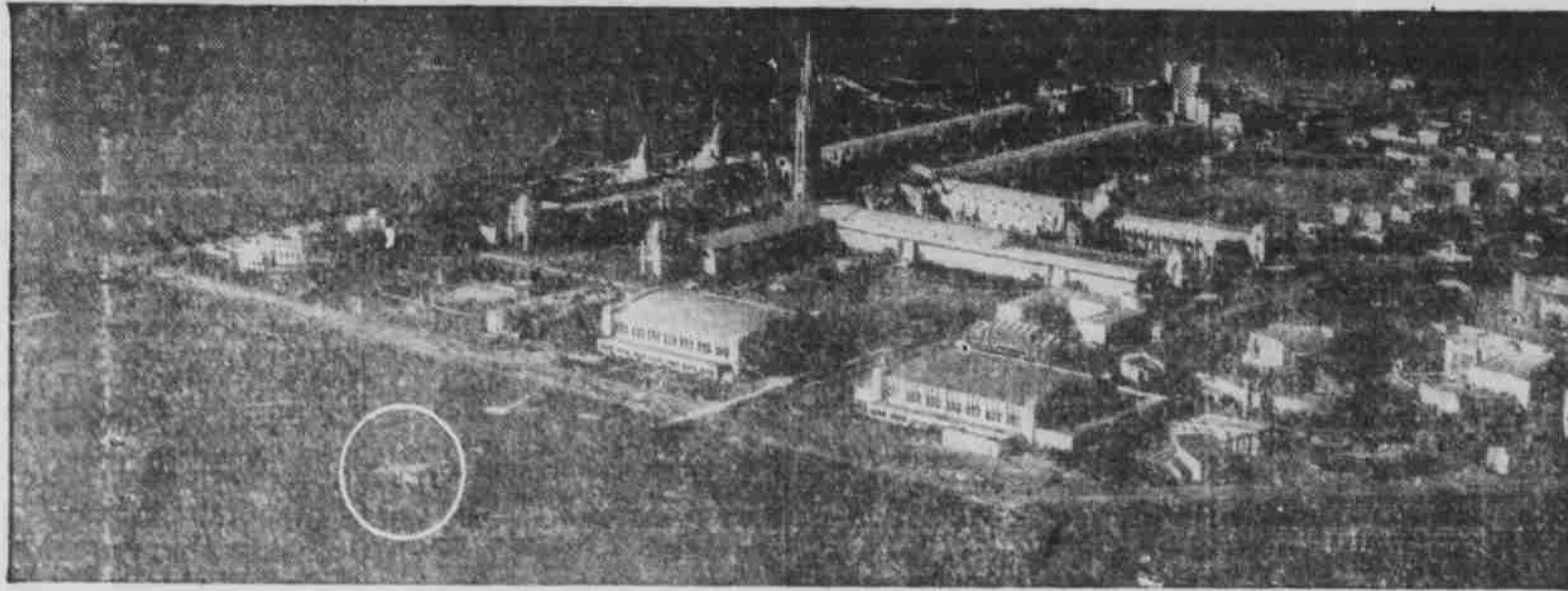


Pictures from the World's Fairs

74-Passenger Clipper Lands at Treasure Island



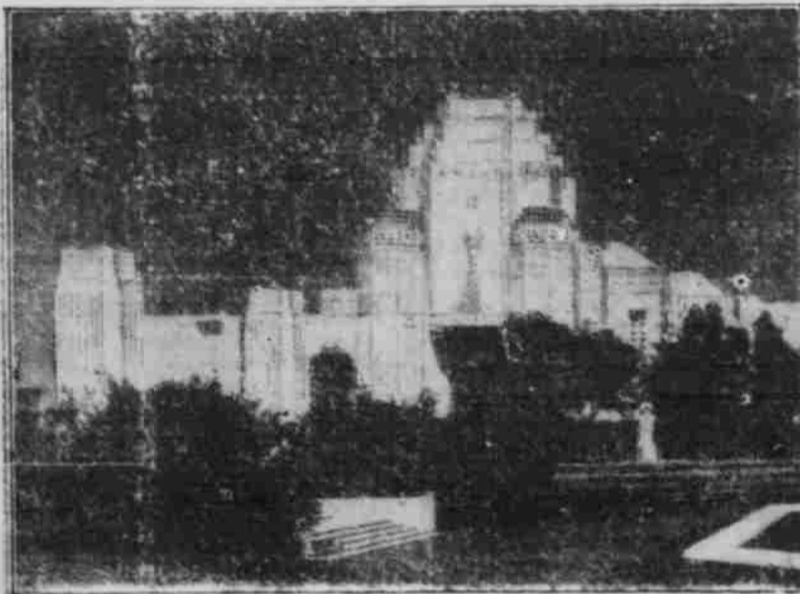
Pictured from the air is the Port of Trade Winds at the California World's Fair. Stretching off toward the right is Treasure Island and the buildings housing exhibits. The slender, graceful tower in the middle background is the Tower of the Sun. Landing in the "bay" is the new 74 passenger Boeing plane, world's largest (in circle) which will be a featured exhibit in the Palace of Air Transportation. Note the size of the huge craft compared with the Pan-American Clipper ship ahead of it.

Shaking a Hip



"Come on inside and see the show, boys," but it doesn't take much urging on the part of the barker to draw a crowd to see this exhibit. It's not new, but no fair is a real fair without it or something similar. This dancer is attracting customers to the "Greenwich Village Follies."

Tulips and Tower



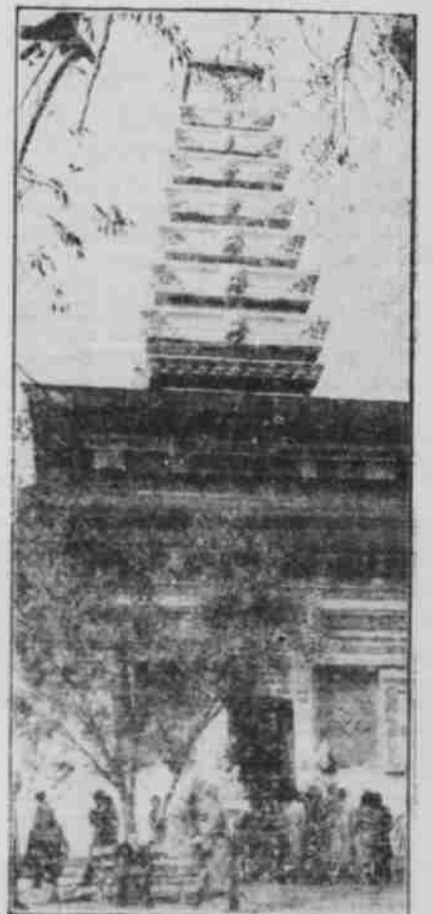
Ferdinand the Bull would go for this tulip field with the South Tower reaching out romantically in the background. The tulips, thousands and thousands of them, are part of the Treasure Garden which the California World's Fair publicity department terms "a riot of blooms"

No Fair Complete Minus This



This quartet of backs—nice aren't they—have been entered in an international contest to select the world's most perfect back. Fittingly enough, the competition is being sponsored by an affiliation of Chiropractors and will climax Chiropractors' Day at the Fair. Left to right, the fair femmes are Kaye Laurens, Patricia McMillan, Bettina Norberg and Georgina Wells.

Oriental style



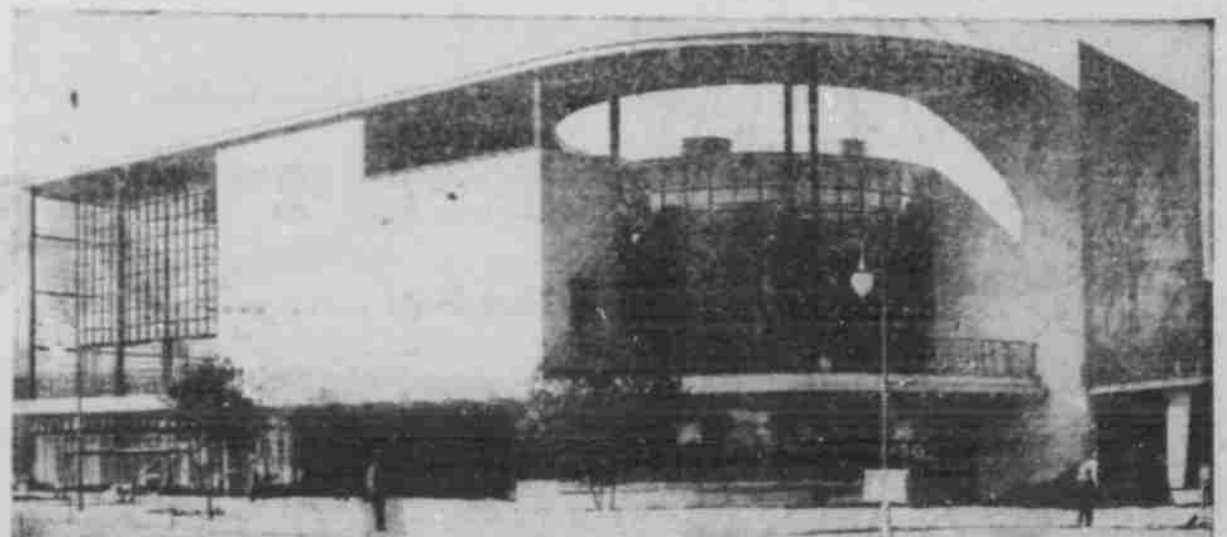
This style of architecture might represent a Chinese pagoda to mid-western eyes, but it's from the Netherlands East Indies. The ornate tower is part of a building of Oriental design which contains hundreds of displays from the mystery of the Far East.

East Meets West on Rickshaw



Zoe Dell Lantis, one of the many Exposition beauties, receives a trophy as the winner of the "chip chop" sweepstakes in a rickshaw race on Treasure Island.

South America at World's Fair



Showing a curving steel and glass facade in the most approved modernistic style, the Argentine Pavilion at the Golden Gate Exposition houses extensive exhibits from our South American neighbor. The steel and glass construction, say those who know, makes the interior extremely light and attractive.