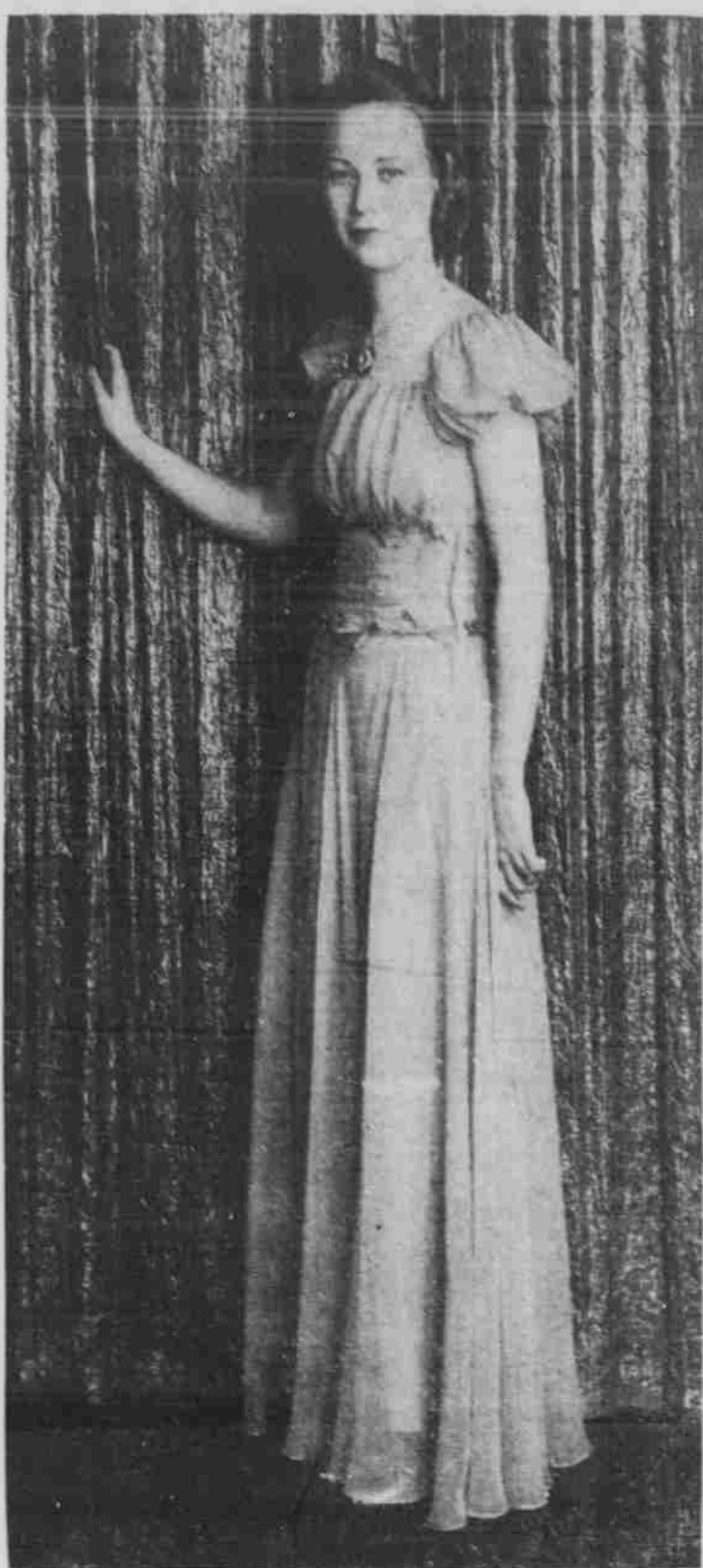


Turner Struts in Soup and Fish



Bob Turner, Kappa Sigma, all dressed up... a black double-breasted tuxedo with braid-trimmed lapels... from Gold's.

Pascoe Goes in Blue and Rose



Helen Pascoe, Chi Omega, Mortar Board, Honorary Colonel candidate is a symphony in blue and old rose... blue chiffon formal with a gathered bodice, square neck and puff sleeves... old rose bows at the waistline... silver slippers... and a silver locket with a brilliant blue stone... dressed for the Ball by Gold's.

Accessories Go Over In a Big Way--Brighter They Are, the Better

It's an accessory year, say Vogue, Harpers Bazaar and the Daily Nebraskan. Hats, gloves, scarves are giddier than ever before, and we think it's a good thing. Even the most conservative spirits are blossoming out in riots of color, the brighter the better.

**By Betty Meyer.**  
Red, brown, green and blue combine to make a wool and suede sweater for Jean Hughes, brunette Alpha Phi. Wooly grey forms the front panels of Theta Edie Knight's Kelly green sweater. Weezy Lefler of the same house looks very cozy in her wooly red cardigan.

Angora, that campus favorite, is worn by Jean Holtz Alpha Chi, in an aqua bolero. She wears it over a black velvet skirt.

For formal wear, Corky Ashton has white angora sweater gloves and kerchief. None of this factory stuff for this Alpha Phi Corky, she did all the knitting herself.

Betty Benson, Phi pledge, accents her brunette charm by pink angora socks and sweater and tiny pink bows in her curly hair.

**Bell-Hop Mode.**  
A bell-hop sweater of red brushed wool is worn by Mary Ellen Crites, AOPi pledge. The sweater has black and gold buttons.

To set off her red hair, Pat Prime wears a pale yellow angora jacket. There's more to the jacket than a lot of fuzz, however. It has a sentimental value, having been sent to this Alpha Phi by a friend in Atlantic City.

Match mates are the angora anklets and sweaters of Betty Gibson, Gamma Phi. Peggy West, of the same house, will keep warm



this winter in her white wooly mittens with matching initialed scarf.

To match her gold suede bolero, Elinor Harkinson, Alpha Chi, has a wide belt of the same material. More suede, in the tan waist and matching turban worn so jauntily by Maxine Meyers of Gamma Phi. For art's sake, Geeg Johnson, Alpha Phi has a denim smock with wood barrel buttons up the

front. Nice thing for a drawing lab and very practical.

A bright note in the drab winter landscape will be sounded by Pat Woods, K A T pledge, in her fuzzy red mittens with anklets to match. Red too are the wool bonnet and gloves of Doris Gruhl, Gamma Phi Beta.

**Buffalo Bill Is In.**

Shades of Buffalo Bill! Bobbie Marston Sigma Kappa head woman, sports cowboy gloves of pigskin, with gauntlet cuffs decorated by a horseshoe of silver studs.

Red and blue is the feather sticking so pertly from the crown of the teal blue sport hat worn by Betty Jean Turner, Alpha Chi Omega.

Lending her support to the cause of the extreme type of hat is Marge Heuser, Theta. She proudly wears a black felt profile beret trimmed with a bright green feather. Louise Oddo, flashing brunette Sigma Kappa, wears her black "doll hat" tipped far over her face. A red bird perches in the center of the rounded crown.

To supply the good ground work that every college girl needs, Maria Donnelly wears high platformed sport oxfords in several tones of brown. Lois Harpster, AOPi, tramps about the campus in black flat-heeled sport shoes with red and black lacings around the top edge. Matching her spindle heeled tan and brown kid shoes, Helen Abel of Alpha Phi, carries a platform bag in the same colors.

Gamma Phi Beta will hold its annual Founders day banquet at 6:30 Friday evening at the University club. Seventy-five will be present. Decorations will be in the sorority colors, brown and moose, and the sorority flower, the carnation. Toastmistress will be Helen Kovanda, and toasts will be given by Betty Fosbury, representing the pledges; Irene Hollenback, sophomore; Betty Gibson, junior; Carolyn Kennedy, senior; Mrs. Armin West, alumnae. Miss Marguerite McPhee will also give a short toast.

Fashion Rules Merger of Modern with Classic in Natty Sports Outfits

This year, per usual, sports clothes have undergone no drastic changes. In sports it's the classics that are best. But any element of sameness is shunned by fashion-wise coeds. To achieve this seemingly impossible coalition of fashion and classicism takes some doing, but Nebraska coeds, as ever, prove themselves equal to anything. (And we mean anything!) Take the Ray twins of Kappa Kappa Gamma whose tailored sport jackets are the very essence of correct British tweeds. They are fashioned of rough-surfaced rose colored woolen pained in light green, blue and yellow. Novelty is added by the six pockets and the new cardigan cut. With these jackets, Verna and Betty wear navy blue skirts and angora sweaters in a soft shade of blue. Knitted dresses are always popular with feminine campusites,

especially when they are as distinctive as the green El Shirro dirndl sweater dress which Marian Bradstreet wears. This Gamma Phi declares that the style comes straight from Hollywood. **The Plaids are In.** Betty Lehman, Sigma Kappa giggle-gal, goes abroad in a gay plaid pleated skirt topped by a warm green sweater jacket. Combining a candy pink angora sweater with a brown knit skirt is Elizabeth Smith of Alpha Omicron Pi. The Tri Delt community jumper really gets around. This gay yellow and brown checked job belongs to Marj Lindquist, but has been seen, complete with matching jacket on nearly all the sisters. Match-mates in soft green are the favorites of Mary Virginia Knowles. The set includes a tweed skirt, long-sleeved pull-over and

grograin bound cardigan, all very becoming to the blond Kappa. Alpine fashions intrigue Gail Ferguson, Kappa Delt pledge resident, who dons a jumper in brown beige, with bright yarn embroidery around the midriff. The straps are removable and then Gail has an extra skirt. A preview of winter is given by Helen Kovanda, dark haired Gamma Phi, who tells about her bright red ski suit trimmed with black caracul. Another early bird is Sara Smeerin, Sigma Delta Tau, who looks forward to wearing her brown wool snow suit, zipped up the front and having little red leaves on the collar. Coal black woolen makes the snow suit worn by Ruth Samburg, SDT pledge. It has a white collar, and there are two white insets on the jacket front. Ruth wears with it white snow boots and white angora hat and gloves.

Petticoats Must Show This Year, Says Fashion

White, black, flame, fuschia... crushed rose, eggshell, wine, lime... sapphires, patio blue, stratosphere... blue... all lucious new names for lovely new colors in winter formals shown at Miller's. In the style of the gay nineties we find a black taffeta with a shirred bodice, pink and blue bows on the skirt, a cotton petticoat and a lace hat. A doll's hat in black with cerise velvet flowers sets off a black pencil satin silhouette style with matching cerise flowers. Shirred chartreuse satin gathered at the waist carries out its fullness in succeeding bands of shirring down the skirt which flares. Royal blue in a formal with tiered ruffles is set off with red velvet bows. Ice pink net over metallic with rhinestone bodice and slender shoulder straps is the height of femininity. The crushed bosom effect and the old fashioned bustle have come in from the gay nineties. The starlight rhinestone trim sparkles under bright lights. Newest in the limelight is the monastic

formal with gathered elbow length sleeves and a gold mesh wide belt.

Men's Religious Group Meets at Noon Today

Men's religious discussion group will meet at a lunch today at 12:00 o'clock in former Museum, room 6. The discussion, in accordance with Armistice day will be, "What attitude should a believer in the God of Jesus take toward war?" C. D. Hayes, secretary of the University Y. M. C. A. will lead the meeting. The luncheon is open only by reservation because only 25 men can be accommodated.

Hunter College in New York City is the largest women's college in the world.

LINCOLN Now!

Janet Gaynor  
Robt. Montgomery  
in  
"3 Loves Has Nancy"  
— Plus —  
"Woman Against Woman"  
— Look! —  
NEBRASKA-PITT  
FEP JAMBOREE  
ADMITSITE NIGHT  
Come to the Last Show and  
Remain Over FREE For a  
Social Studio Preview!

STUART Always a Suit for 25c

Now Showing!  
"Men With Wings"  
In Technicolor  
Fred MacMurray  
Ray Milland

ORPHEUM TODAY!

Panic Sweeps the Nation  
"MARS ATTACKS THE WORLD"

"Look at that boy go for a touchdown!"

"Touchdown, myeye—he just heard where to get the new Arrow Fall patterns."

Before the news gets around, make a bee line for your Arrow dealer and pick out your quota of Sanforized, Mitoga cut beauties from the finest assortment of Arrow shirts that ever hit your campus.

Everything's brand new — quiet patterns, colorful stripes on white grounds, checks and double checks, many new collar styles—all tailored with Arrow's inimitable touch. Hurry... Hurry...! \$2 and higher.

**ARROW SHIRTS**

Yesterday's Crowds Rolled in the Aisles... Said It Was the Funniest Picture in Years... WINCHELL... Says It's Funnier Than Long Underwear... See It

**TODAY!**

WAVE THAT FLAG, BEAT THAT DRUM, BLOW THAT BUGLE, HERE THEY COME!

**Brother RAT**

PRISCILLA LANE  
WAYNE MORRIS  
JOHNIE SCAT DAVIS-JANE BRYAN

20c Until One  
• Matinee  
• 25c  
• Night  
• Lower Floor  
• 35c

NOW SHOWING  
**VARSITY**  
SEE Football Upset!  
NEBRASKA THEATRE  
CARNegie TECH 20, PITT 10.

For dramatic entrance into a FORMAL season



- \* YOU'RE looking for festive clothes for gala nights of the formal season. You'll find them here at Miller's. Youthful sophistication in gleaming satin, or a demure fashion that might have been borrowed from your grandmother with its quaint bustle or wide hoops. 16.95 to \$25, in Junior Shop, Second Floor.
- \* Dancing feet step light and gracefully when beautifully shod in satin. Black or white, with open toe and open shank. \$5. Shoes, Second Floor.
- \* Jewelry takes on added glimmerings, and sparkles importantly to vie with the stars themselves. Prices from \$1 to \$10. Jewelry—Street Floor.
- \* Hair goes UP for formal wear, giving your head a proud, regal look. Have your coiffure designed for you in our Beauty Salon, Second Floor.
- \* Our accessory shop, second floor, offers many helpful suggestions on what is right to wear with what. If you've any problems, take them here, and assure yourself a dramatic entrance to a formal season.

MILLER & PAINE