

SPRING FLOWERS MOTIF OF Y.W.C.A. MEETING SUNDAY

Coeds Entertain Mothers at May 8 Breakfast in New Union.

Spring flowers will be the theme of a breakfast in the ballroom of the Student Union building, when members of the Y. W. C. A. entertain their mothers Sunday morning, May 8, at 8:15.

The program and decorations will carry out the theme of spring flowers. A toast, "Flowers of Spring" will be given by Muriel White, Y. W. C. A. president and "Flowers of Summer" will be given by her mother, Mrs. H. A. White. Mary Fellows will sing "The Spirit Flower" by Campbell Tipton. Maxine Maddy is her accompanist. Jean Simmons and Charlotte Quick will play a flute duet. A string quartet also will play.

Report Activities.
A report of activities and projects planned and carried out by the Y. W. C. A. during last year will be given by Winifred Nelson, toastmistress and president of the organization last year. Group singing is also planned for the guests.

Members of the Y. W. C. A. cabinet are arranging the breakfast. Pauline Boyd and Ann Husted are in charge of the program and Margaret Krause is in charge of the menu, which will be prepared under the direction of Catheress Quisenberry in the new kitchens of the Student Union building.

"Elaborate arrangements have

Students Obtain Places With Choral Groups

Students interested in the following choral groups next fall may secure application blanks at the school of music.
University Singers
Varsity Glee Club
Freshman Glee Club
Vacancies will be filled before the close of this semester.

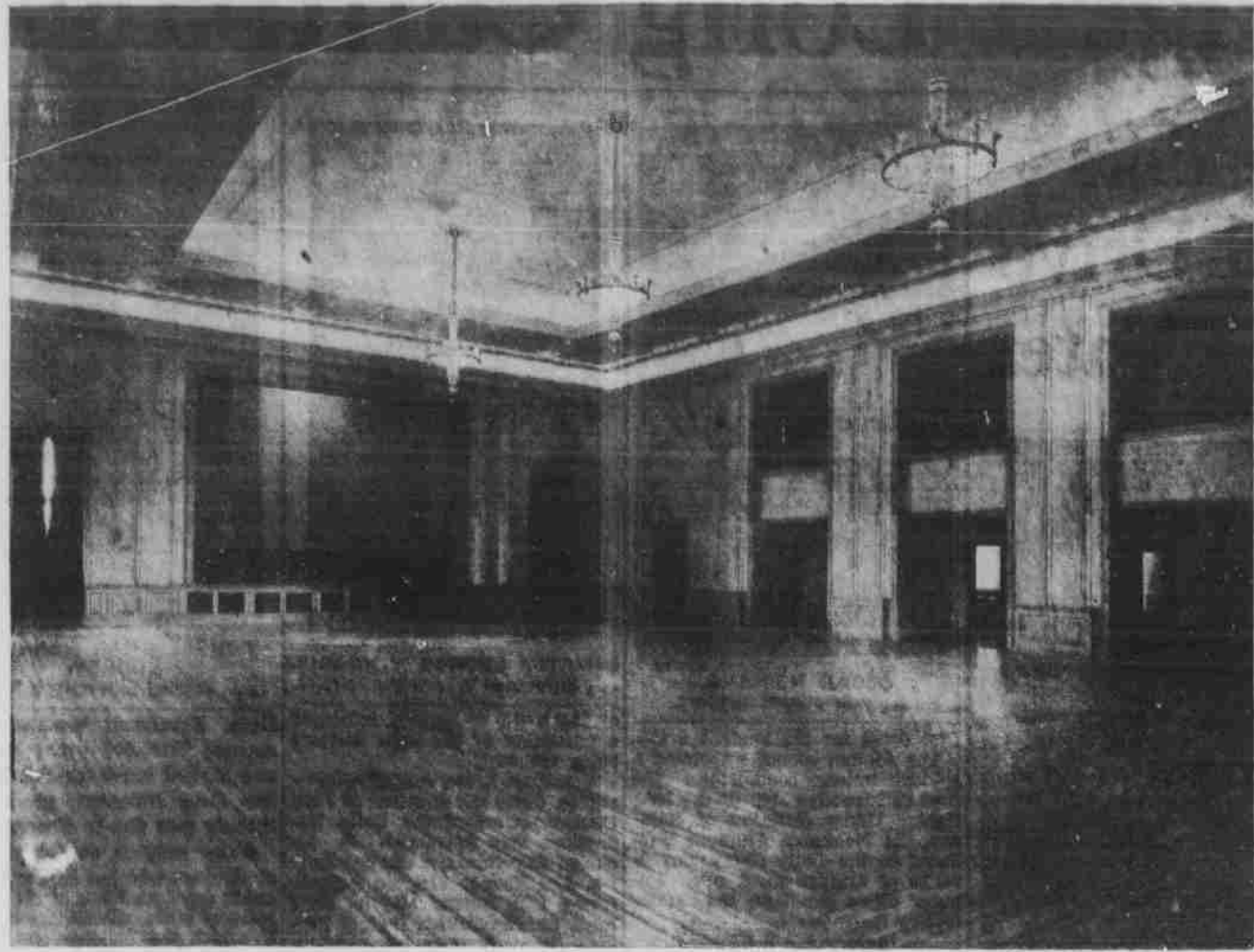
been made with Mr. Van Sant for the affair, one of the bright occasions on the first calendar of the Student Union Building," said Margaret Krause, a member of the committee in charge.

Social Hostess Eager to Serve Union's Guests

Dark haired and brown eyed Marion Steel, social director of the Student Union, is enthusiastic over her new job on the campus. Students will find her eagerly alert to co-operate with them for any social function held in the union.

She expressed herself as being particularly impressed with the friendliness of the students she has met. "I'm anxious for the union to open so that I can contact more of the students and make their friendships." Her frank smile testified to her sincerity. Altho Miss Steel is proud to have been the first hostess chosen for the Burlington Zephyr, she likes the campus and is sure that she is going to enjoy her work here. "I'll be glad to place my services at the disposal of any one who wishes help for parties or who wishes to book events."

Union Ballroom Spells Dancing



Principal feature of the second floor is the ballroom shown above, decorated in green draperies, and lighted indirectly. The orchestra stand is at the east end.

Architectural Beauty Breaks Campus Skyline

American Georgian style of architecture makes Nebraska's Student Union fairly loom up on the Cornhusker campus in direct contrast to the typical architectural types of other structures. The general exterior is made up of blending colors of Old Virginia type sand-surfaced, moulded face brick trimmed with Indiana Bedford limestone.

Steel casement windows throughout the ground floor are designed to admit the maximum amount of light and air to the ground floor area. All other windows of the first, second and third floors are double hung wood windows fully weatherstripped and screened in copper. Sloping portions of the roof of the center wing of the building are roofed with architectural slate having graduated thicknesses and composed of blending colors of purple, mottled green and purple, gray and black.

LA FOLETTE'S THIRD PARTY HAS FASCIST TINGE, SHUMATE

(Continued from Page 1).
simply be accidental," Prof. Shumate added. "The movement really hasn't gone far enough to enable anyone to declare it fascist. One must hold a reserved judgment, for it is impossible for the leaders of a party to determine exactly in which direction their party will move."

Governor LaFollette's tradition—that of being a member of the great LaFollette's of the past who have been prominent in American politics—would surely not suggest fascism, Shumate remarked. Yet traditions are easily broken when a man enters politics.

From Good Stock.
"As a candidate for president and as a leader of his new third party, Governor LaFollette has many desirable qualifications," Shumate remarked. "He is from a part of the country which is still too young to have developed strong sectionalism. He is of good American stock, with a family name well known in politics. He also is young, vigorous, handsome, and personable."

Governor LaFollette's greatest strength should arise in Wisconsin, his home state, and possibly in the middle west and the industrial east. Industrialists in the east are probably pleased with his nationalistic policy and his encouragement of or demand for capacity production.

"If a reasonable amount of prosperity or economic security occur, or even if conditions get no worse than they are at present, LaFollette's party is not likely to gain much headway," opined Prof. Shumate, "but if economic discontent would become as great as it was during the early years of our depression, or if war should break out, LaFollette would stand a good chance of making rapid headway with his party."

UNION BALLROOM GETS FIRST TEST 'HOUSEWARMING'

Ken Nelson and Orchestra Give Music Tonight for 'Breaking-In.'

Dancing feet will glide on Lincoln's largest dance floor for the first time tonight when Ken Nelson's orchestra plays for the Student Union's housewarming.

The magnificent ballroom, located on the second story of the building, has been planned to aid students in their quest for "smooth" dancing, for the floor has been laid so that party-goers will always dance with the grain of the wood. The walls of the room are done in a warm cream color accentuated by green drapes with a metallic thread which cover the huge ballroom windows.

For those who like to watch the race of man go dancing by, or for those who feel the need of a brief respite, little balconies on the third floor have been set in overlooking the ballroom and salmon-colored lounges have been placed around the dance floor.

UNIVERSITY NOTES.

"Measures of Business Activity in Nebraska" was the subject of Prof. William Spurr's address at the Wednesday night meeting of Economics.

"Modern Trends and Common Sense in Education" was the topic discussed by Dean Frank Hienzlik of the teachers college at the regional school men's conference at Chadron Friday and Saturday.

Dr. G. W. Rosenlof of the teachers college gave several addresses recently before school groups. He addressed a regional conference of high school students at Hamburg, Ia., Tuesday on "Signboards of Success." May 10-15 is the date of the convention of the general Federation of Women's clubs to be held in Kansas City and Dr. Rosenlof will address the group May 12 on the subject "Character Education—the Adult's Part."

Last week he appeared before the Northeast Nebraska Schoolmaster's club at Wayne where he talked before several groups including the Wayne student body and members of the faculty. The current issue of the Junior College Journal contains an article by Dr. Rosenlof on "Teacher Training in Junior Colleges." Harold Ried, a graduate student, is co-author. Dr. Rosenlof had another article, "Progress in the North Central Association," appearing in the Southern Association Quarterly.

"We are passing thru a period of slight economic instability," according to an editor, who writes with rare restraint.

The economic pendulum swings to and fro, and the great middle classes get conked on their coxos every time it passes.

Harold Petz to Direct State Camp for Boys On Ag Campus in June

Harold Petz, former University of Nebraska athlete and present director of intramural athletics at the university, has been announced as director of athletics for the Cornhusker boys state camp, to be held here in June.

The boys state camp is to be held at the agricultural campus this year. More than 125 boys from a great many communities are expected to attend.

Your Mirror Will Show the Difference

Permanents. \$3.50-\$10

Hair Styling

The Correll
Beauty Salon
228 N. 13 B2836

DANCE

in the Beautiful New Union Ballroom
To the music of
BECK - JUNGBLUTH - GIBSON
Friday, May 5
A. W. S. Marinee Dance
Friday, May 13
Student Evening Party

CONGRATULATIONS

U. N. BARBER SHOP

J. G. TEIGELER
211 North 12th St.

MUSIC STUDENTS GIVE SPRING SONG RECITAL

42 High School, University, Adult Students Take Part in Program.

Miss Alma Wagner presented forty-two students in her annual spring recital Tuesday night in the Temple Theater.

High school students, university students and adults took part in the recital. There was group singing in the form of quartet and duos. One large group of twenty-two girls sang two numbers, which were received very well by the audience.

- The program was as follows:
- Brahms, Serenade
 - Rachmaninoff, Flights of Spring.
 - Betty Reese, Ella Bird
 - Rose Dunder, Jeannette Gist
 - Mildred Clark Fred, Margaret Harvey
 - High, Elmer Mae Ogle
 - Sylvia Wolfe, Ruth Browne
 - Maxine Pope, Alice Bannum
 - Wanda Seaton, Constance Christ
 - Holly Shurtliff, Iopous
 - Sue Polstering, Margaret Baker
 - Maxine Lavery, Lola Ebyhart
 - Geraldine Krause, Charalox Davis
 - Janet Beggs, Martha Mizee
 - Arddi, Be Sara Rose, Maxine Pope
 - Rogers, Now That the Time for Making Songs Has Come, James Lawson
 - Gounod, Lovely Flowers, Will Ye, from "Faust," Haze Mas Ogle
 - Gounod, Je veaux vivre, from Romeo and Juliet, Sylvia Wolfe
 - Hiltsch, Passare Birds Farewell, Clifford and Clinton Sturdevant
 - Hageman, Do Not Go, My Love, Ruth

Seven Conditioning Units Insure Fresh Air in Union

Steam Jet Machine Cools Water in Circulation, Holds Humidity.

Fresh air and proper temperature will be one of the main features of the new Student Union building. With seven separate air-conditioning units scattered throughout the building, the air will present the most favorable conditions possible with modern equipment.

By careful division and distribution of the systems, food odors will be eliminated from all corridors and lounging spaces. Independent units make this practicable.

Steam Jet Cools Water.
The water which circulates

through the units will be cooled by a steam jet machine which uses waste steam from the steam turbines of the power house on the campus. During the summer months the rooms will be supplied with sufficient fresh air and recirculated air to create an atmosphere in the proper comfort zone. In the winter months this fresh air and recirculated air will be heated to the proper temperature and humidified in order to insure the most favorable conditions. In this manner a constant temperature and humidity will be maintained winter and summer.

A smoke exhaust will free all public rooms of tobacco smoke. This exhaust system skims the air off the ceilings in such a manner as to not interrupt or unbalance the air-conditioning system.

DR. CLAPP CHOSEN HEAD OF OLYMPIC MAT TEAM

Nebraska Physical Education Instructor Journeys to Japan in 1940.

Dr. R. G. Clapp, professor of physical education in the university, was elected chairman of the United States Olympic wrestling committee for the games which have been scheduled for Japan in 1940. Clapp's election came at the recent meeting of the committee in Chicago.

The committee has requested that all organizations sponsoring amateur meets contribute 5 percent of their gross receipts toward financing the United States entry in the 1940 games.

Dr. Clapp is also a member of the United States wrestling rules committee. He has served on this body for twelve years and has been chairman for the past eleven years.

Coeds Hold Final Ivy Chain Practice Today

All members of the Ivy and Daisy chains will meet in front of Grant memorial hall at 5 o'clock this afternoon for the final practice before the Ivy Day ceremonies tomorrow morning. The procession will be held at the throne location instead of at the coliseum as was previously announced.

Spring Banquet of Phys Ed Department Booked for Friday in New Union

The annual spring banquet of the women's department of physical education, the first banquet to be scheduled in the new Student Union building, will be given Friday night for students who are majoring or minoring in physical education. Miss Elizabeth Halsey, director of physical education at the University of Iowa, and the president of the central district of the American Association for Health and Physical Education will be the principal speaker.

Miss Pound Featured With Washington Post Article on Folksong

An article on English folksong by Professor Louise Pound of the department of English, with portrait of her, occupied nearly a page in the issue for April 25 of the Washington (D. C.) Post.

The national folk festival society opens its annual programs, occupying several days, in Washington on May 6. Miss Pound is a member of the executive committee of the organization.

There's no such thing as an unmixed blessing, it seems. Take the radio (please do)—it brings us valuable information and now and then some excellent entertainment, but it also turns the spell binders and medicine men loose in our living rooms.

This accounts for the wide discrepancy: You judge your worth by what you are capable of doing and intend to do beginning tomorrow or next week; the world evaluates you on the basis of what you did yesterday.

Miss Pound Featured With Washington Post Article on Folksong

- Miss Pound, Louise Pound, The Blue Danube, Antonietta Skoda, Campbell-Tipton, If I Were King, Carl Harnberger, La Folia, The Mocking Bird, Mildred Clara Friedrich, Constance Baker, Sullist, Russell, The Sacred Fire, Charlotte Klenzsch, Strauss, Spring Voices, Betty Reese, Finch, The Breakers, Miss Stark, Sule-Suena, My Heart at Thine Sweet Voice, from "Sanson and Delilah," Geraldine Krause, Henry Bralinsky, violinist, Chingetti, Mad Scene, from "Lucia di Lammermoor," Antonio Coniglio, Constance Baker, flutist, Lehman, Myself When Young, from "In a Persian Garden," Robert Bagby, Thomas, Je suis Triana, from "Mignon," Rose Dunder, "Jouiss de l'Age," Martha McGee, Martin, The Minstrel, Lloyd Bullison, James Lawson, Miss Stark, Richardson Douglas, Franklin Laffer, Accompanist, Margaret Baker, Ruth Browne, Warren Hammett, Mrs. Margaret Loigier, Naomi Vest, Miss Lambert, Mrs. R. E. Sturdevant.

Another way to identify a fool: When his hand is on a steering wheel, there's a chip on his shoulder.

Papa Dionne keeps buying new cars. Maybe he wants to be prepared, always, to go fetch the doctor in a hurry.

Dick Powell wants a new type of movie role—before congress passes that bigger navy bill, which will condemn him to his present forever.

The BEST MEATS

That Money Can Buy.

Choice Corn Fed Meats will form an important part of the menus to be served in the New ---

STUDENT UNION BUILDING

They Come From

STANDARD MARKET

1535 "O" Street B-6591

Van Sickle PAINTS

Were Used in Decorating
The Student Union
Building—

The Best PAINT

Money Can Buy

Van Sickle Glass & Paint Co.

We congratulate the University and the Student Body upon the successful completion of their new activities center.

Salesroom 143 So. 10th — Factory at 3rd & M St. LINCOLN, NEBR.