

Society

Editor, Virginia Anderson

Host of House Parties Head Social Calendar of Week End

A host of parties Saturday night and many unusual themes for decorations featured week-end activities. Alpha Chi Omega's trellised their house with lilaes. Colored lanterns lighted the punch table on the front lawn. Inside, great bouquets of lilaes were used with white streamers to represent

trellises. Purple and green grapes hung in clusters. Marian Hoppert was responsible for the novel theme. Chaperoning were Mr. and Mrs. Dwight McVicker and Mr. and Mrs. Glen Fierce.

Phi Psi's and Sig Alpha's entertained southern mansion style, the Phi Psi house representing a plantation. More than 125 guests gathered for the affair. Mrs. Sue Kenneth and Mrs. Gladys Gaither were sponsors.

Purple and white, the fraternity colors, and their illuminated crest were used for the Sigma Alpha Mu house party. Dr. and Mrs. Louis Marx and Mr. and Mrs. J. J. Marx were the chaperons.

Phi K. A.'s followed their alumni banquet at 6:30 at the Lincoln by a spring party in the hotel ballroom. Speakers at dinner were Bernard Smith, past president; Norman Stout, president for the coming year, and Merle Loder, a local alumnus. Garnet and gold, the fraternity colors and the lighted pin brightened the ballroom.

Kappa Kappa Gamma's celebrated founders day at a 4:30 banquet at the Cornhusker hotel given by the alumnae of Lincoln. The actives and the pledge class each gave a skit and scholarship awards were presented to Marie Kotouc and Harriet Pugsley. Elizabeth Waugh was named most outstanding pledge.

Three fraternities will honor their parents at Mother's Day dinner held today. The active chapter of Alpha Sigma Phi will entertain their parents at a dinner to be held at the chapter house. In charge of arrangements is Bill Hollister, social chairman. The mothers of Beta Theta Pi will be honored guests at a dinner at 1 o'clock at the chapter house today. George Eager is in charge of arrangements. The Acacia's will also entertain their mothers today. Dinner will be served at the chapter house. Approximately forty members parents will attend.

Marjorie Souders, '36, who has spent the past year in New York, and was prominent in campus activities as an honorary member Kosmet Klub and Ivy Day poet, is visiting at the Kappa Kappa Gamma house this week end. Miss Souders plans to return to New York in the fall.

Workers Place Faith in Collective Strength As Cure-Alls of Ills, Says D. Swayzee in May Alumnus Issue.

(Continued from Page 1.)

workers to participate in strikes," stated Dr. Swayzee. "This is in part because the picketing which accompanies ordinary strikes, exposes workers to violence and intimidation of non-sympathizers. Parading back and forth in front of a plant on the picket line is offensive to many workers. There are other workers who hesitate to leave a striking plant, fearing that strikebreakers will be brought in."

"Now comes the rapid spread of the sit-down method. It protects strikers from the dangers of violence, and by keeping all the strikers inside the plant it gives leaders less trouble in maintaining group solidarity, with the result that few desert from the ranks."

Dr. Swayzee contended in his article that, although the sit-down strike is now clearly illegal, many students of the labor problems feel that by a long process of evolution it will gain legal approval.

THIS WEEK, Sunday.
Alpha Sigma Phi Parents' Day dinner chapter house 1:00.
Beta Theta Pi Mother's Day dinner at chapter house 1:00.
Acacia Mother's Day dinner at chapter house 1:00.

SEEN ON THE CAMPUS.

Phi Psi's and Sig Alpha waiting till the last minute to cook up decorations for their joint house party... Virginia Fleetwood afraid that a game of torture with Ken McGinnis might get too rough... Freddie Webster claiming that the Beta's had a blanket invitation to the Alpha Phi pajama party... Joe Stephens is quite proud of his life-like imitations of Mussolini... Mildred Lawrence and Lewis Cass having a little picnic of their own right out on the Ivy Day grounds... high school tracksters wandering about the campus with that very important air... there is some discussion at the Sig Alpha house as to who is the true Casanova. So far the race seems to be narrowed down to Buzz Fonda and Bob Thornton... that one-hour convocation course becoming very very popular at registration time... Bob Fenton putting about in his roadster with the top down, the speed limit for him 30 miles an hour... Tommy Davison has earned quite a reputation for himself with his strip tease act.

Members of the six colleges serving on the committee were: Karl W. Arnold, W. L. DeBeauvoir, Joseph E. Burr, Arthur H. James, D. A. Worcester, E. S. Fullbrook (secretary), Cecil O. Swayzee, C. S. Hamilton, H. W. Janssen, Harold B. O. Brooks, Amanda H. Heppner, Lane W. Lancaster, H. P. Davis, H. C. Piley, H. E. Bradford, W. H. Morton, O. H. Werner, Chas. L. White, J. P. Colbert and T. J. Thompson (chairman).

TEMPLE TO DIRECT STUDENT CHOIR IN ST. PAUL CONCERT

(Continued from Page 1.)
Head, "and "All Breathing Life" by Bach.
Christiansen's "Deck Thyself, My Soul, with Gladness" will introduce the second group of numbers, "Angels We Have Heard on High," by Dierdman, and "Last in the Night" by Christiansen, will follow. In the last composition, Miss Lucile Reilly, soprano, will sing the solo part.
Following "O Gladsome Light" by Gretchnoff, the choir will sing "Grieve not the Holy Spirit" by Stiner, with a solo quartette composed of Miss Reilly, Miss Wenona Miller, contralto; Arthur Barneby, tenor; and Alfred Reider, baritone. To close their program, the choral group will sing "Send Forth Thy Spirit," by Schuetkey.

Faculty Board Recommends New Advisory Board to Direct Freshman.

(Continued from Page 1.)

includes the following statement: "The committee, moreover, recommends that none of the recommendations herein made be put into effect if such action would involve recurring expenditures which would divert any considerable amount of funds from the teaching of freshmen."

For Graduation give practical gifts which will keep your college friendships long remembered

Some Suggestions are

- Fountain Pens
- Pencils
- Desk Sets
- Leather Goods

and thousands of others
A Complete Wedding Service
Including Cards and Stationery

These Good Looking Little Informals \$1
With the Colored Border and Double Edge. Buy with your name or address and envelopes to match.

George Bros.
PRINTERS OF THE SUPPLIES FOR NEBRASKANS
The Wedding Stationers
Telephone D1813 1213 N Street

hosiery makes or breaks an otherwise smart ensemble!

Van Raalte

Gives Perfect 1937 Finesse

Last Word In First of Summer Shades!

"Flextop" Silk Chiffons

In a definitely romantic summer, 'midst the sheerest of hosiery, the most glamorous of shades... 1.25

"Flextop" is a four-thread hose with self-adjusting flexible garter welts that makes them more comfortable and longer wearing. Choose it for your summer costumes. Sizes 9 to 10 1/2.

Sunny - A sunken beige to wear with new light colors. Stroller - A dark taupe.

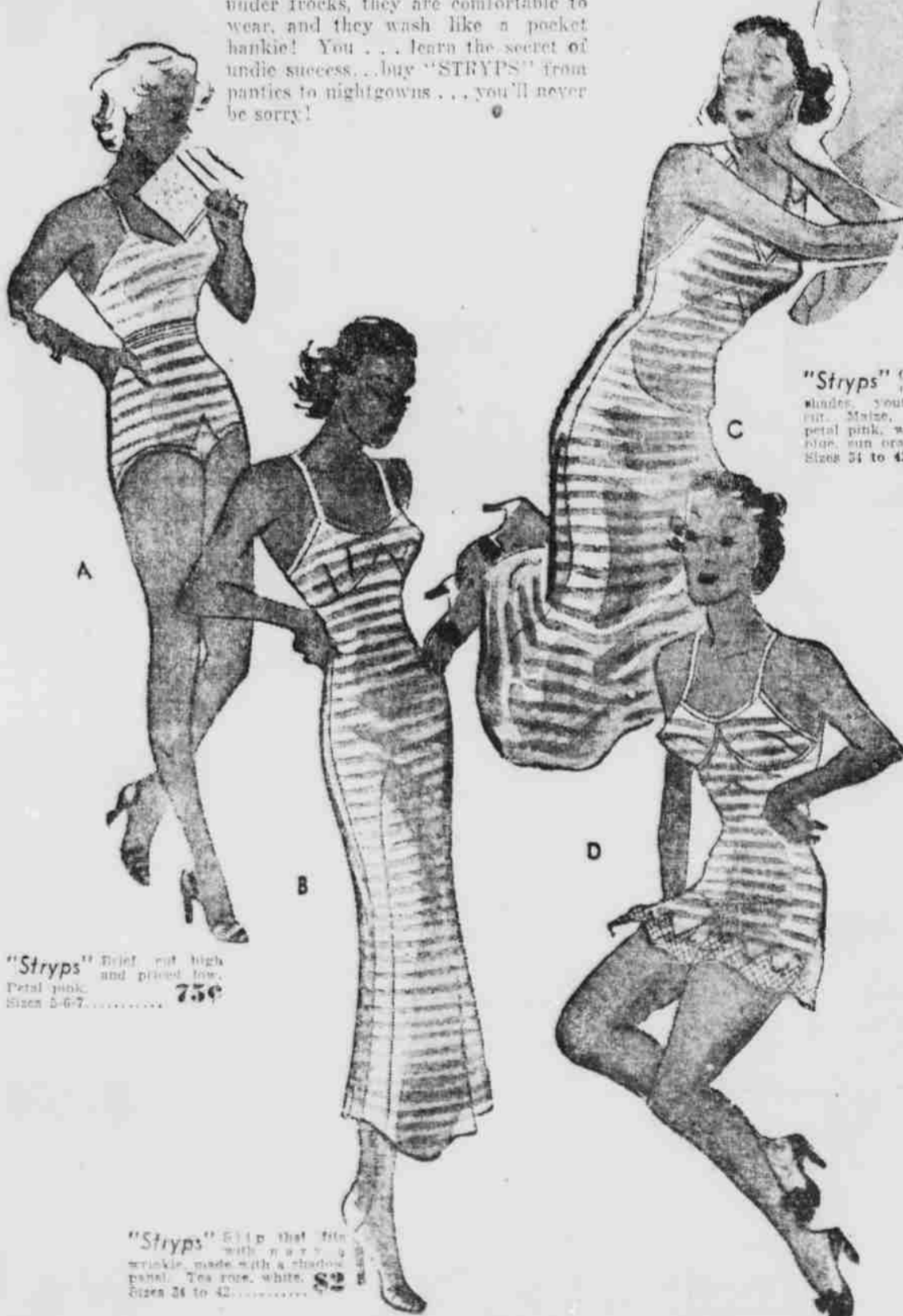
Brisk - A golden, coppery tan "right on the avenue!" Rose Dijon - Soft, medium grige.

-RUDGE'S Street Floor.

Yours for a Comfortable, Washable Undie Wardrobe!

"Stryps" - Tailored

They're going round in smart circles! For wise is the lady who chooses "Stryps"! They fit smooth as skin under frocks, they are comfortable to wear, and they wash like a pocket handkerchief! You... learn the secret of undie success... buy "STRYPS" from panties to nightgowns... you'll never be sorry!



"Stryps" Brief, cut high and pinned low. Petal pink. Sizes 2-6-7. 75c

"Stryps" Gown in luxurious, youthful slim fit. Stripes, blue, azure, petal pink, white. French blue, sun orange. Size 34 to 42. 82

"Stryps" Single-piece one-piece that you'll wear under everything from a sports frock to a formal. Petal pink, white. Size to 40. 82

"Stryps" Slip that fits with a new wrinkle, made with a shadow panel. Tea rose, white. Size 34 to 42. 82

"because you love nice things"

-RUDGE'S Second Floor.

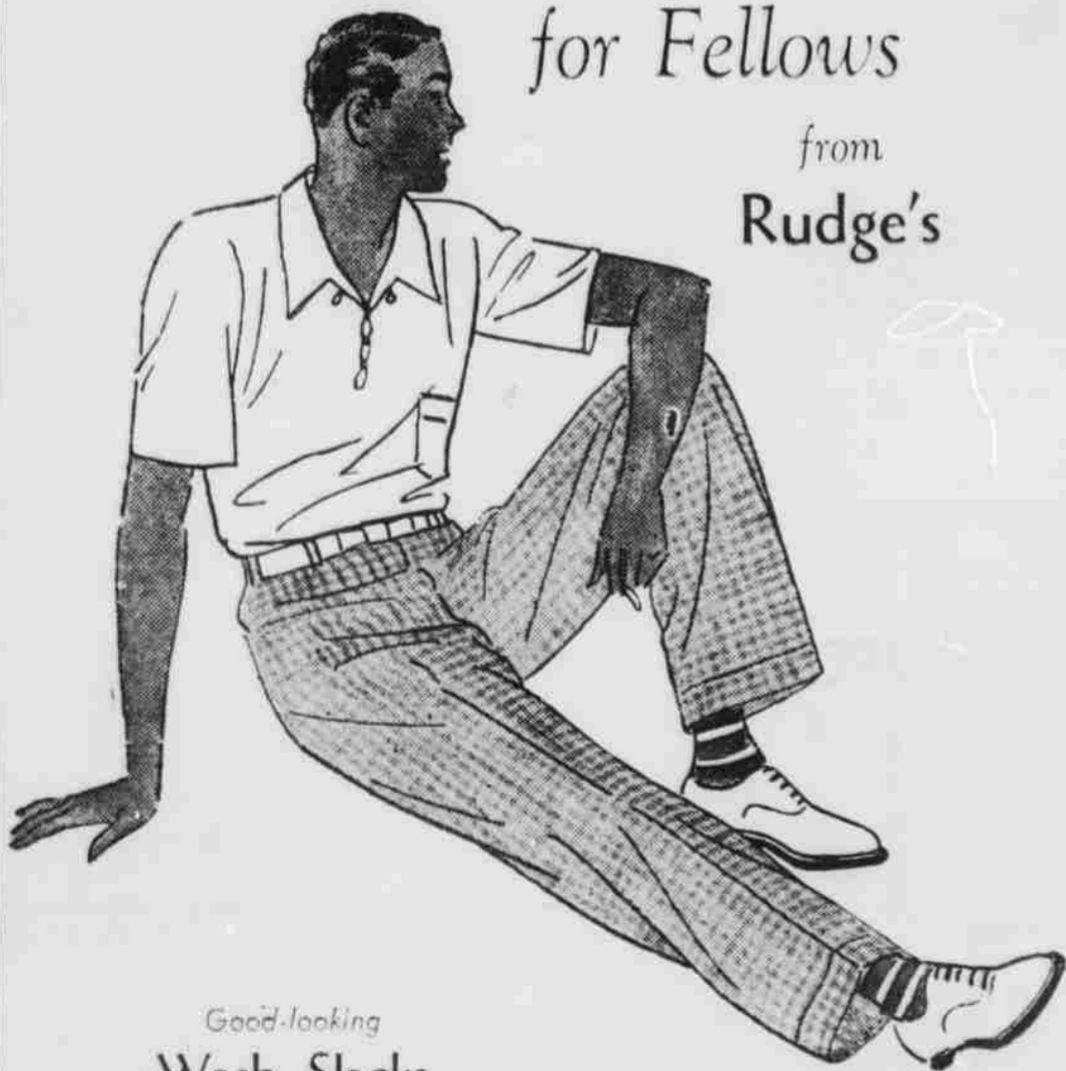
Rudge & Guenzel Co.

For More Than Fifty-One Years The Quality Store Of Nebraska!

Fresh-Air Togs

for Fellows

from Rudge's



Good-looking Wash Slacks

Hairline stripes, window pane checks, Glen plaids, and mixtures that look like woolen weaves. Greys, tans. 30 to 42 waist sizes.

1.95

Comfortable Polo Shirts

Plain colors or novelty patterns. Goucho, cord tie, or crew necklines. Blue, white, tan, maize.

1.00

Check-Striped Slacks

Practical because they're washable. Waist sizes 30 to 42.

2.95

-RUDGE'S Street Floor.

Rudge & Guenzel Co.

For More Than Fifty-One Years The Quality Store Of Nebraska!