

### CAMPUSOCIETY



**RUMORS ARE ALWAYS FLOATING** around the Nebraska campus, but one that seems to be most persistent is that which whispers that at least six or seven candidates will file for Prom Girl, with several more aspirants yet to decide. The honor of walking down the coliseum floor on the arms of the junior and senior class presidents was sought last year by only two, and the year before, by three, so technically speaking, this year's filings show an increase of 350 percent. Another die-hard rumor is that the Prom committee plans to burst forth with something original in the way of presentation. All in all, it sounds as though the Prom should be a great success, and with three weeks till the big affair, it's still not too late to get a date.

**PHI MU** announces the pledging of Ruth Pyle of Pawnee City, and Margaret Bleasoe of Lincoln.

**THE PHI PSIS** have pledged Bob Perry of Lincoln, and the Avacia's, George Young, also of Lincoln.

**HONORING** Lulalee Marshall, who will leave today for Chicago, A. O. Pi pledges entertained at luncheon and a theater party Saturday noon at the home of Eloise Benjamin. Decorations, carried out in a patriotic motif, consisted of American flags. About eighteen attended the affair.

**BETSY NORELIERS**, Kappa from Kansas State, has been staying at the Kappa house this weekend, and Imogene Souders from Nebraska City was down for the Beta formal.

**DELEGATE** from Lincoln to the Gamma Phi province convention in Nashville, Tenn., was Glorine Wigg. Miss Wigg left the latter part of last week, and plans to return this coming Wednesday.

**AND TONIGHT** Mary Quigley, Valentine Pi Phi, will return from the Young Democratic convention, held this year at Norfolk.

**VISITING** the Tri Delt house this weekend is Mrs. A. J. Smith of St. Joseph, Mo.

**MANY STUDENTS** went out of town for this last Friday and Saturday. Maxine Packwood, Kappa Delt, left for Ames, Ia., where she visited friends. Ann Anderson, Phi Mu, is spending the weekend in Omaha with her sister, and Lorraine Kelley, Kappa Delta, is leaving for an extended visit in the south. Dorothy Hood, Alpha Phi has been in Omaha, and Elaine

Shonka and Dorothy Kenner spent the weekend in Seward.

**SEEN IN** town over the weekend was Willa Norris, Gamma Phi who graduated last year, and who is teaching in Milford now. Another Gamma Phi here was Rose Drath who has been teaching in Holdrege.

**THE ALPHA** Tau Omega mothers club will give a buffet supper tonight at the chapter house for the members and pledges of the active chapter and their dates. Mr. and Mrs. W. Bruce Shurtleff will chaperon the affair.

**THIRTY-FIVE** actives and pledges of Sigma Eta Chi were entertained at a buffet supper and party, at Ellen Smith hall, Friday evening. Committee chairmen in charge of the affair were Flora Katherine Ewart, entertainment, Eleanor Pabst, decorations and Janet Yungblut, menu. Get-acquainted games were played after the supper and a George Washington birthday theme was carried out in the decorations.

**A VALENTINE** dinner was given Thursday by Mrs. Bentley, Sigma Chi house mother, for the members of the fraternity.

**AT THE ALPHA** Chi Omega house tonight the mothers club will entertain at a buffet supper in honor of the fathers and the active chapter. The decorations will be carried out in a George Washington birthday theme. Following the supper a program will be put on by the pledge class. About fifty or seventy-five are expected to attend.

**ANOTHER** Sunday night supper will be held at the home of Mrs. L. M. Clark for ten members of the

### WHAT'S DOING.

**Sunday.**  
Alpha Chi Omega Sunday night supper at the chapter house, mothers club for the fathers and the active chapter.  
Alpha Tau Omega Sunday night supper at the chapter house, for members and their dates.  
Big Sister board Sunday night supper at the home of Miss L. M. Clark.

Big Sister board. Assisting Mrs. Clark is Miss Shirley Hatt.

It's a Townsend Photograph that satisfies.—Adv.

### FORMER STUDENTS RETURN TO CAMPUS

Among former university students visiting the campus last week were Kenneth A. Simmons, San Antonio, Tex., who was graduated in 1932; and Gerald Greybeil of Neligh, both visiting in the department of geology. At the college of engineering offices were reported: Homer A. Scott, Omaha, who was graduated in civil engineering in 1927; Elmer T. Gustafson, Minneapolis, mechanical engineering in 1925; John C. Steele, Bushnell, mechanical engineering in 1933, and Clair M. Wilson, Morrill, graduate in architecture in 1934.

### Fraternity Stationers

Engraving Dies for All Fraternities and Sororities on Hand.

Immediate Services for all Engraving and Printed Personal Stationery.

### INVITATIONS

### ANNOUNCEMENTS

### SPECIAL

3 Ring Note Books

45c to 70c

Stiff or Flexible Covers, attractive and substantial at Low Prices.

New Popular Spiral Note Books

15c to 35c each

Popular Priced Loose Leaf Memo Books

35c to 75c

Complete with Fillers.

**George Bros.**

Printers—Stationers

1213 N St.

# Men! . . . presenting your spring style guide!



This advertisement is an answer to the question which college men ask us every day: "What's new?" And, if after reading this you are still in a haze about the very latest in men's clothing, then come in and visit with us. We really do take pride in being so smart . . . in knowing how to dress you correctly rectly . . . yet inexpensively!



Shirred Back . . .

You'll be paying plenty of "back interest" to the suit styles this spring! The new shirred back model is a sure winner, with its form-fitting belted back, slit coat, and patch pockets. It's good in both single and double breasted styles.

21<sup>50</sup> and 25<sup>00</sup>



Double Breasted . . .

The conservative double breasted suit is still in the front ranks of fashion. It is particularly good for the occasion which requires a bit more formality in attire, though you do see the sport tendency apparent in the colors and fabrics.

14<sup>75</sup> to 35<sup>50</sup>



Single Breasted . . .

Many eastern colleges are showing a decided preference this spring for the single breasted models. At Nebraska (here we go predicting) it will run a close race for popularity with the double breasted. Again, the fabrics and colors are sportier than usually.

14<sup>75</sup> to 35<sup>50</sup>

A bit impudent (we'll admit!)  
A little sassy (so they say!)  
A lark to wear (we'll agree!)

And extra-ordinarily college-looking (don't you think?)!

## GLADYS PARKER



"Lucky Studs"

Printed silk jacket frock . . .  
plique collar  
and vest with  
sassy tie . . .  
large white  
buckle on belt

16<sup>50</sup>

"Good Time Charlie"

Jacket dress with stream-line  
back . . . lace  
collar, flower  
on shoulder,  
10 buttons on  
front of waist

16<sup>50</sup>

"Leap Frog"

Combination of print and sheer  
material  
frock with  
sleeveless  
jacket . . . un-  
usually attractive!

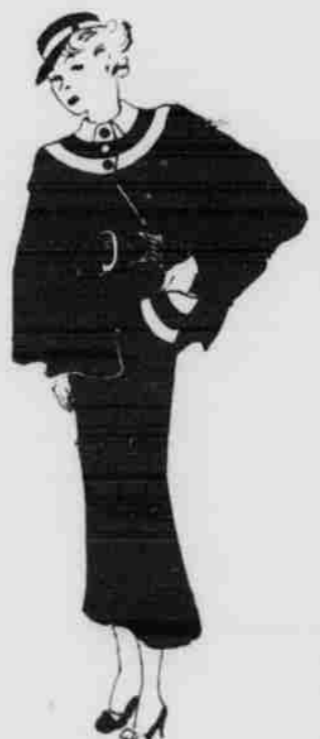
16<sup>50</sup>



"Peek-A-Boo"

Sheer material fagoted . . .  
tricky red  
leather belt,  
clever buttons  
made of leather.

16<sup>50</sup>



"Captain Jim"

Cape dress style with white  
pique material  
on collar  
and vest . . .  
sassy tie . . .  
short sleeves.

19<sup>50</sup>

"Button Button"

A jacket frock with a bright  
print top . . .  
and three  
large buttons  
set smartly in  
back!

19<sup>50</sup>

"Quick Change"

Jacket frock trimmed in gay  
taffeta . . .  
clever button  
treatment . . .  
may be worn  
with or without  
jacket!

16<sup>50</sup>



Sports Back . . .

This style evolved from the popular free-swing suit of last summer and early spring. It has the same sporty appearance that the shirred back presents, though the pleats are much deeper. It likewise is half-belted, with patch pockets, and slit coat.

21<sup>50</sup> and 25<sup>00</sup>



Topcoat Fashions . . .

Polo styles! Shirred backs! Wrap-arounds! All three are equally good. You'll find the polo and shirred back coats in either half or full belted, while the wrap-around requires a full belt. Small checks in greys and tans are especially good. In addition to the plain greys and tans.

19<sup>50</sup> and 22<sup>50</sup>



The Plain Topcoat . . .

Again we find our old friend, the plain topcoat! Its popularity and correctness has made it a favorite for several seasons. And from the outlook now, it'll hold its own again this spring. Too, its continued appearance in the fashion picture makes it a very safe buy!

17<sup>50</sup> to 25<sup>00</sup>

Men's Store—11th Street Annex

**GOLD & CO.**

**GOLD & CO.**

KAMPUS KORNER—Third Floor.