

VESTALS WILL GIVE PAGEANT THURSDAY

Arts and Science Group to Present Fete by Dr. H. B. Alexander.

The annual pageant of the Vestals of the Lamp, honorary Arts and Science organization, will be presented Thursday evening, April 16, in the auditorium of Morrill hall.

The pageant was written by Dr. H. B. Alexander of Los Angeles, Calif., formerly a professor at the university and founder of the organization. It represents each of the arts of the college.

Elaine Haverfield, president, will represent the Spirit of Academic. She will introduce the Three Degrees portrayed by Helen McNulty, bachelor's; Miss Hildegarde Stauss, master's, and Miss Margarete Hochdoerfer, doctorate.

Miss Haverfield will then present the arts of the college. Eleanor Deming will represent history; Margaret Deming, Letters; Victoria Glatfelter, art; Lucille Ledwith, statecraft; Elaine Gibbons, mathematics; Mary Weaver, science, and Lyndall Brumbach,

PURSES MAY BE DRESSED UP IN ORIGINAL WAYS



Many ingenious designs are used in making purses for the season. The bag at the top is formed of two suede berets with their characteristic little tabs, sewn back to back and fastened to a gilt frame.

Two colors or shades of calf skin are employed in the second model shown. A slide fastener is used. The evening purse which is becoming an indispensable accessory may be made of shirred lace over a silk form. An ornamental ball serves as the guide of a slide fastener.

At the bottom, calf skin is made into a watch-thin oblong purse fully equipped with mirror, change purse, and vanity.

Release March 9 to 14

Men's Dress Chart-Spring and Summer 1931

OCCASION	Business and Informal Day Wear	Day Weddings and Formal Afternoon Wear	Semi-formal Evening Occasions	Evening Weddings and Strictly Formal Occasions
SUIT	Sack Suit Single or Double Breasted	Black Oxford Cutaway Striped Trousers	Tuxedo	Full Dress
VEST	To Match	To Match Coat or Light Gray or Buff	Dark Silk or White Pique	White, Single or Double Breasted
TOPCOAT	Single or Double Breasted, Topcoat, Raglan or Ulsterette	Velvet-Collared Chesterfield or Dark Topcoat	Velvet-Collared Chesterfield Topcoat	Velvet-Collared Chesterfield or Dark Topcoat
SHIRT	Plain or Fancy	White Plain or Printed Bosom	White Stiff Bosom Two Studs	Plain Stiff Bosom One Stud
COLLAR	White or Collar to Match Starched or Soft	Wing or Turn Down	Wing	Wing
TIE	Four-in-Hand in Contrasting Shades	Black and White or Pearl Gray Four-in-Hand Ascot or Bow	Black Bow	White Bow
HAT	Soft Hat, Derby or Straw	Top Hat	Opera or Top Hat Gray or Black Soft Felt, Derby or Straw	Top Hat or Opera Hat
GLOVES	Tan or Gray	Pearl Gray or White	White or Gray	White
SHOES	Oxfords or High Shoes in Black or Tan	Black with Cloth Tops or Oxfords with Pearl Gray Spats	Black Patent Leather Low Shoe or Pumps	Black Patent Leather Low Shoes or Pumps
JEWELRY	Cuff Links of Informal Design	Formal Links	Stud Links and Waistcoat Buttons to Match Smoked Pearl	Stud Links and Waistcoat Buttons to Match, Mother of Pearl

Sororities Choose New Chairmen For Summer Rushing, Social Activities

With the approach of spring the Greek societies have been busy electing new officers and appointing chairmen. Summer rushing will be upon us before we realize it and new girls adept in the art of pleading and promising will fill the shoes of the outgoing chairmen.

All sororities have not yet appointed new ones, and their present chairmen are still acting in whatever capacity a chairman is supposed to act.

Mary Alice Kelley, Omaha, has been the rush chairman this year for Kappa Kappa Gamma, while Betty Wahlgren, Hastings has acted as social chairman. Delta Zeta has had Blanche Bartos, Wilber, as social chairman, and Neva Beth Turner, Lincoln, rush chairman. Phi Omega Pi has had Bernice Mumby, Lincoln as social chairman, and Norma Ailes, Red Cloud, rush. Harriet Nesladek, Omaha, has held the office of so-

cial chairman at the Alpha Omicron Pi house while Doris Heumann, Seward has worked with her in rushing. The Pi Beta Phi's social activities have been led by Mildred Richardson, Lincoln, and Helen Cozad, Omaha, acted as rush chairman. The Sigma Delta Tau's have had Lucial Goldenberg, Omaha as social, and Roseline Pizzo, Omaha, rush.

The following girls have been appointed to fill these offices for the summer and coming year: Alpha Chi Omega, Jane Axtell, Omaha, rush chairman, Lucy Larson, Lyman, social; Alpha Delta Pi, Mary Reynolds, Omaha, social, Maxine Sleeper, Kansas City, Mo., rush; Tri Delta, Rosalie Lamme, Walsenburg, Colo., social, Mildred Root, Bassett, rush. Ruth Ridnour, Lincoln has been appointed by the Delta Gammas as social chairman, and Dorothy Zoellner, Scottsbluff, as rush. Chi Omega will have Blanche Sheldon, Mount Ayr, Ia., leading them in social activities and Jessie Mae Kurk, Lincoln, in rushing.

Gamma Phi Beta has appointed Helen Byers, Hastings, social chairman, Lucille Kelly, Grand Island, rush; Kappa Alpha Theta, Helen Hart, social chairman, and Jane Youngson, Minden, rush chairman. Alpha Delta Theta will

have Parthenia Schneider, Pilger social, and Gladys Lemke, rush chairman; Phi Mu social chairman will be Betty Buis, Pender, and Dorothy Douglas, Lewiston, rush; Alpha Xi Delta, Ada Reynolds, Omaha, social chairman, Wilma Lailman, Arapahoe, rush chairman; Theta Phi Alpha, Helen Buehrer, Geneva, social chairman and Lois Lee, Lincoln, rush chairman. Maxine Wiess, Shelby, Ia., and Mary Frances McReynolds hold the chairmanships for Zeta Tau Alpha. The Alpha Phi's have no acting social chairman. Mae Posey, Lincoln will act as the rush chairman.

"But you guaranteed that this watch would last me a life time." "I know—but you didn't look very healthy the day you bought it."—Texas Ranger.

BUCK'S COFFEE SHOP
(FORMERLY DAVIS)
SPECIAL STUDENT LUNCH
30¢
Hot Rolls and Drink Included

philosophy. The soft music of a harp will accompany the pageant.

Rachel Branson, Frances Holyoke, Alfrede Auten and Berniece Hoffman will take the part of Vestals.

Members of the faculty and friends are invited to attend the pageant. Miss Margarete Hochdoerfer is sponsor of the group.



The crime wave, too, strikes a breakwater



An alarm! Headquarters radios it to cruising cars.

Police Radio is "joining the force" in many a city—acting as a breakwater in checking the surge of criminal activity... The apparatus the police are using comes out of the telephone workshop. It is logical that

Western Electric should make the equipment, drawing on a fifty-year experience as manufacturer of telephones for the Bell System... Serving this vast organization is a huge responsibility. Carrying it out means



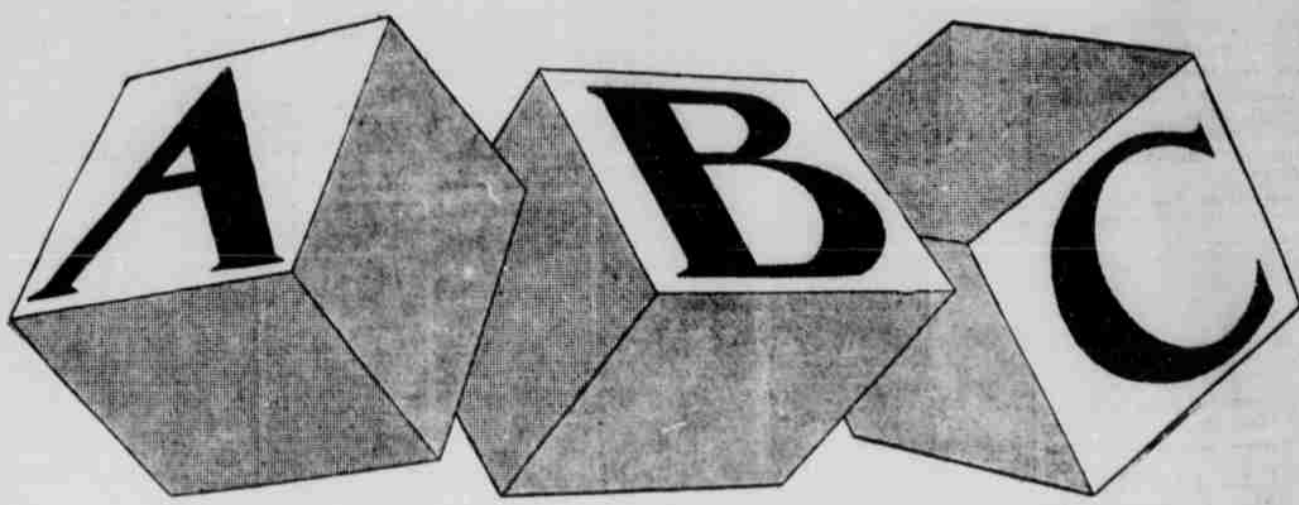
This engineer's "precinct" is a laboratory.

keeping an open mind on new methods of manufacture, new sources of supply, new channels of distribution. It means welcoming and taking full advantage of every worth-while aid that modern science offers.

Western Electric
Manufacturers... Purchasers... Distributors

SINCE 1887 FOR THE BELL SYSTEM

Rudge & Guenzel Co. Presents The



of "About Campus"
Spring Fashions

A for Algeria... home of contrast colors... brilliant reds, blues, yellows.

B for basic spring colors... blue, beige, black, brown, gray.

C for contrast... open sesame to smartness... also for chalk-white accents found in lingerie touches, bags, gloves, jewelry.

D Dressmaker details... jabots, Bruyere scarfs, Vionnet cowls, sashes, intricate cuffs seen on rough woolcoats, or suits.

E Evening fashions... laces, Chanel's Andalusia... for instance... chiffons... mousseline de soie... organdies... eyelet batistes.

F Fisherman's net... Schiaparelli's new contribution to sports wear.

G Gal-yak... seen on distinctive Spring coats and suits.

H Hats... Watteau bandeau, sailor brims, shallow crowns. Patou's squarecrown, rough shiny straws.

I Inches by which your dress escapes the floor... 13, 14 and 8... for sports, town and afternoon respectively.

J Jackets with dresses for daytime... for evening, for street, for contrast, for everything.

K Knitted things... suits, sweaters, even hats for sports.

L Lapin... in both street and evening jackets.

M Menswear fabrics... that vie with tweeds and rough wools in spring suits.

N New costume jewelry... coral, aquamarine, turquoise.

O Opaline yellow... green or pink.

P Patou's new evening and accent colors.

Q Patent leather... bags, belts, flowers... in white, bright red... and for pigskin bags, gloves, shoes... for pajamas, worn now for dining, dancing.

R Quaint fashions from the 90's... frills, ruffles, taffeta petticoat dresses.

S ingote... the smart two-in-one dress and coat costume.

T Sleeves... fractional... worn with longer, looser gloves... for scarfs... ascots and flat fur leading.

U Tricolor... basic color with white and an algerian accent... red, white and blue.

V For undies... with fitted dressmaker details.

W Vionnet... our favorite coutourier... in coats and dresses.

X For white... for evening... for accent.

Y Any color used with white.

Z For youth.

Z For Rudge & Guenzel's zeal in providing these smart fashions for Spring.

On display in our apparel and accessory departments... our Fashion Esplanade, Floor Two... and in Our Windows!

DIAMOND BROTHERS
1131 O Street
YOU DON'T GIVE A WRAP...



the same wear you would a coat... they are so lovely with your new formal and priced so you can have one... only

\$14.95

gorgeously made of sheer substantial chiffon velvet—fully lined with crepe or satin.
DIAMOND BROS.