

BISHOP WALDORF TO BE HONORED TUESDAY

Methodist Students Plan for Dinner at Trinity Methodist Church.

Honoring Bishop Ernest L. Waldorf of the Methodist Episcopal church, the Methodist students on the campus will sponsor a dinner at Trinity church Tuesday evening at 6:30 o'clock. Chief Justice Charles A. Goss will preside at the dinner.

About three hundred Methodist professors, laymen and students are expected to attend the affair, which the Rev. and Mrs. W. C. Fawell will sponsor.

Henrietta Becker is chairman of the committee in charge of the affair, and is assisted by subcommittees. Norman Peters is chairman of the ticket sales. Tickets may be secured from any member of the Methodist student council.

Home Ec Club Elects Hazel Benson Head

Election of officers Thursday in

Nebraska University Women of Pre-War Days Enjoyed He-Men's Sports In Trick Costumes, Old Files Show

Evolution In Gym Apparel Makes Modern Girl Thankful.

By FIZZY ED.

In pre-war days there was girl's track at the University of Nebraska as evidenced by pictures in the Daily Nebraskan of that time. Athletic women liked he-women pursuits such as track. This might not be so bad, but the costumes! If evolution has done nothing else it has put girls into neat, attractive, and practical gym costumes.

The athletic young ladies in the picture are dressed in typical 1915 gym attire. Black shirts, high necked and loose fitting. Voluminous bloomers, cumberbundly bagged about the knees. And stockings, probably heavy cotton. The idea of silk hose in gym! But still more unheard of, the idea of a hoseless maiden, even indoors! The regulation sneakers were smartly black to match the rest of the ensemble. And as for the undergarments—well, we won't go into that. The whole of the outfit, which looks decidedly grotesque in



itself, is enhanced by the stunning pompadour overhanging the forehead of the feminine sport enthusiasts pictured.

We who perspire under faculty direction in the armory are wont to groan in sympathy for girls in such outfits. The modern gym suit consists of short romper

trunks and bodice all in one piece. Hose may be dispensed with when we are working hard, and we are at least as cool and comfortable as we could be and still be dressed. Those were the good old days, they say. But we'll take our modern gym suits and pursuits any

BARTHOLOMEW IS WED

Former Cadet Colonel is Married to Miss Jean Kennedy.

Word was received here Wednesday of the marriage of Phil Bartholomew, former cadet colonel of the Nebraska R. O. T. C. regiment to Miss Jean Kennedy, of Carmel-by-the-Sea, California. The marriage took place in St. Bartholomew's church, New York city. Reverend Twombly performed the ceremony.

Mrs. Bartholomew is an alumni of the University of California, where she was affiliated with Delta Delta Delta sorority. She is the daughter of Mrs. Clara French Kennedy. Mr. Bartholomew is the son of Dr. and Mrs. Bartholomew of this city.

CLARENCE NORRIS IS MENTIONED BY POULTRY PAPER

Clarence Norris, student in the college of agriculture, received honorable mention in the Poultry Tribune's 1931 club scholarship awards, according to information received at the state 4-H club office on the Ag campus this morning.

The National poultry magazine gave three scholarships for the year. The first place winner, a

club girl from Iowa, received a scholarship valued at \$150. The University of Nebraska boy just missed being awarded a scholarship, the report reads. Norris has been active in 4-H club work in Nebraska for the past few years and was a delegate to the national club camp at Washington, D. C., two years ago.

Printed or plain, there must be a contrast in the colors of your street and campus wear. In prints, light colors on dark background are the general rule, while small geometric designs, polka dots, and checks take precedence over large flower patterns.

The dress at the left employs a crepe of black background and contrasting figure. The contrasting color is used in the upper and sleeve part of the dress. The bodice has a buttoned surplice closing, and the skirt is gored to give gradual fullness.

A scarf collar enhances the graceful cut of the two color model shown at the right.

Your Drug Store CUTS THE PRICES

2 Packages Cigarettes . . . 25c
 Gillette Blades 45c
 Auto Strop Blades 45c
 Proback Blades 45c
 30c Bromo-Quinine 25c

The Owl Pharmacy
 148 No. 14 & P Sts. Phone B1068
 WE DELIVER

ANTELOPE PARK

WILL BE OPEN EVERY NIGHT EXCEPT SUNDAY

FOR THE REST OF THE SEASON

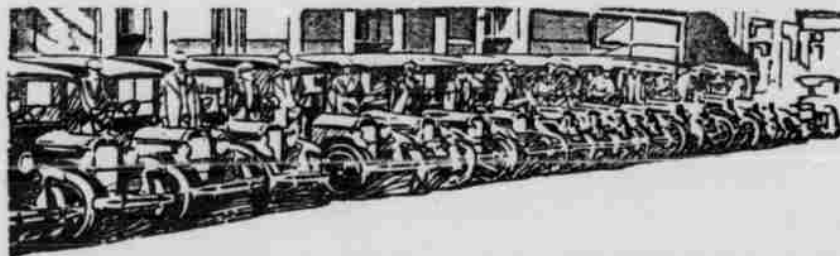
IT'S COOL AND REFRESHING ALL THE STUDENTS GATHER AT THE PARK

Leo Beck's Orchestra

MUSIC STARTS 8:30 5c A DANCE

A Spectacular Parade of Used Car Values & Accessories

Used Cars are being sold at the most exceptional values in recent sales history. Each and every one of these firms stands behind its products.



This is the time of year when college students find it most practical to buy. These dealers are offering the collegian real products at a minimum of cost—they appreciate your patronage.



THERE IS ONLY ONE WAY TO SELL USED CARS and that is to price them right. Our used cars are PRICED RIGHT. Otherwise we could not have sold ONE HUNDRED TEN USED CARS in the month of MARCH. We cannot give them away but we are willing to give you a BREAK if you will TAKE THEM OFF OUR HANDS. WE HAVE A LARGE STOCK TO CHOOSE FROM.

- 1930 FORD Tudor \$390.00
- 1930 FORD Coupe \$385.00
- 1929 FORD Sport Coupe \$300.00
- 1929 FORD Standard Coupe \$285.00
- 1928 FORD Sport Roadster \$280.00
- 1928 FORD Sport Coupe \$235.00
- 1929 PLYMOUTH Coupe \$365.00
- 1926 CHEVROLET Coach \$100.00
- 1926 WHIPPET Coach \$145.00

These Cars at \$25 and Up!

- 1924 BUICK Touring
- 1924 FORD Touring
- 1924 FORD Coupe
- 1925 FORD Touring
- 1925 FORD Coupe
- 1926 FORD Coupe
- 1926 CHEVROLET Coupe

ROGER'S Motor Company

Open Lot 1524 "O" Main Office 1800 "O" B6821 OPEN EVENINGS

USED CARS

Our volume of new car sales has brought in as fine a selection of USED CARS as ever displayed. It will pay you to inspect our Stock before buying.



- A choice of 4 Model A Roadsters, Refinished, reconditioned, priced from \$225.00 to \$435.00
- 1928 A Phaeton, Refinished \$195.00
 - 1928 A Std. Coupe, Reconditioned, Ready to go . . . \$250.00
 - 1928 A Sport Coupe, Special Price 195.00
 - 1929 A Sport Coupe, Refinished 295.00
 - 1929 A Business Coupe, in good condition 265.00
 - 1929 A Standard Coupe, Reconditioned, New Tires 315.00
 - 1929 A Deluxe Coupe, Late model, 2 side mountings, trunk rack 325.00
 - 1929 A Tudor, Extra Clean, KariKeen Trunk 325.00
 - 1929 A Fordor, 3 window Sedan, Side mountings and trunk. Shows extra good care 375.00
 - 1929 A Fordor 2 window Sedan, Extra Clean 345.00
 - 1930 A Tudor, Reconditioned, Ready to go 425.00
 - 1930 A Deluxe Coupe (Choice of 2), Extra Clean 445.00
 - 1930 A Sport Coupe, Side mountings, Spot light like new 435.00
 - 1930 A Standard Coupe, little mileage 425.00
 - 1930 A Deluxe Phaeton, has had 6 weeks service, sold new for \$705.00, now priced 550.00

OTHER MAKES

- 1930 Oakland 8 Coupe, New tires, looks and performs like new, sold less than a year ago for \$1025.00. Now \$585.00
- 1929 Essex Challenger, Like new 425.00
- 1929 Pontiac Coupe 355.00
- 1929 Chevrolet 6 Sedan 365.00
- 1929 Whippet Coach, Completely Reconditioned to give new car service 275.00
- 1927 Dodge Fastest 4 Sedan, Extra Clean 245.00
- 1927 Dodge Coupe 185.00
- 1927 Peerless Sedan, New tires, A-1 condition 375.00
- 1926 Buick Standard Sedan 175.00

TRUCKS

- 1929 Chevrolet Truck 300.00
- 1929 A Panel Trucks (Choice of 2) 295.00
- 1928 Chevrolet Panel 165.00
- 1925 Model T Truck, Ruxtel Axel, Dump body 75.00

O'SHEA MOTOR COMPANY

14th & M Sts. Open Evenings B6854

BARGAINS

SPRING BARGAINS USED CARS

During the year of 1930 the DuTeau Chevrolet Company sold 1,737 used automobiles. This is a great record in Lincoln and it exceeds the number of used cars sold by any other dealer. This was possible because the public has confidence in the DuTeau Chevrolet Company and it knows that it can select the desirable automobile from a large variety of fine reconditioned used cars at a very popular price.

Today, again the DuTeau Chevrolet Company offers probably the best values in the City of Lincoln. Also the best variety. You should compare the cars at that place with other dealers before making your purchase. Today you have one hundred cars to select from and with prices ranging from \$25.00 to \$500.

CHEVROLETS

SEE the fine selection of used Chevrolets representing all models from 1925 to 1930 inclusive. If you are in the market for a used Chevrolet, buy it from a Chevrolet Dealer. He is interested in seeing that the Chevrolet, whether it is used or new, gives the purchaser a big return on his money. It is his business to please the public with Chevrolet automobiles, so always buy a used Chevrolet from a Chevrolet Dealer.

FORDS

Over thirty percent of the used cars handled by the DuTeau Chevrolet Company are Fords ranging in all prices and models. If you are in the market for a Ford, come in and get prices before purchasing. See the unusual bargains.

- | | |
|-------------------------------|-------------------------------|
| '26 Ford Coupe . . . \$ 55.00 | '23 Ford Truck . . . \$ 25.00 |
| '28 Ford Truck . . . \$304.74 | '22 Ford Sedan . . . \$ 25.00 |
| '29 Ford Coupe . . . \$326.40 | '29 Ford Sedan . . . \$330.00 |
| '30 Ford Coupe . . . \$425.00 | '30 Ford Rdst. . . . \$350.00 |
| '29 Ford Sedan . . . \$450.00 | '29 Ford Truck . . . \$250.00 |
| '23 Ford Sedan . . . \$ 25.00 | '26 Ford Coupe . . . \$ 40.00 |
| '30 Ford Coupe . . . \$364.50 | '30 Ford Coupe . . . \$400.00 |
| '30 Ford Coupe . . . \$418.50 | '22 Ford Sedan . . . \$ 25.00 |
| '29 Ford Sedan . . . \$375.00 | '29 Ford Tudor . . . \$270.00 |
| '23 Ford Rdst. . . . \$ 25.00 | '30 Ford Coupe . . . \$410.00 |
| '19 Ford Sedan . . . \$ 25.00 | '29 Ford Coupe . . . \$290.00 |
| '29 Ford Coupe . . . \$325.00 | '27 Ford Coupe . . . \$ 80.00 |
| '29 Ford Coupe . . . \$326.78 | '29 Ford Sedan . . . \$350.00 |
| '26 Ford Rdst. . . . \$ 50.00 | '29 Ford Rdst. . . . \$275.00 |
| '23 Ford Tour. . . . \$ 25.00 | '23 Ford Rdst. . . . \$ 25.00 |
| '24 Ford Coupe . . . \$ 40.00 | '24 Ford Sedan . . . \$ 30.00 |
| '23 Ford Tour. . . . \$ 25.00 | '23 Ford Coupe . . . \$ 25.00 |

BIG VARIETY

You will find used cars of all makes and models including—

- | | |
|---------------|----------------|
| DODGES | CHRYSLERS |
| PONTIACS | STUDEBAKERS |
| BUICKS | NASHES |
| WHIPPETS | ESSEX |
| MODEL A FORDS | WILLYS-KNIGHTS |
| MODEL T FORDS | |

and a fine stock of good used trucks. These trucks are late models in Chevrolets and Fords.

PRICED LOW

These cars are priced low and will be sold within the next few days at big savings to the buyer. These cars can all be handled on reasonable down payments and convenient terms. See these USED CARS before purchasing elsewhere and make your own comparisons.

DuTeau Chevrolet Co.

1817 O Street. 16th & P Streets.